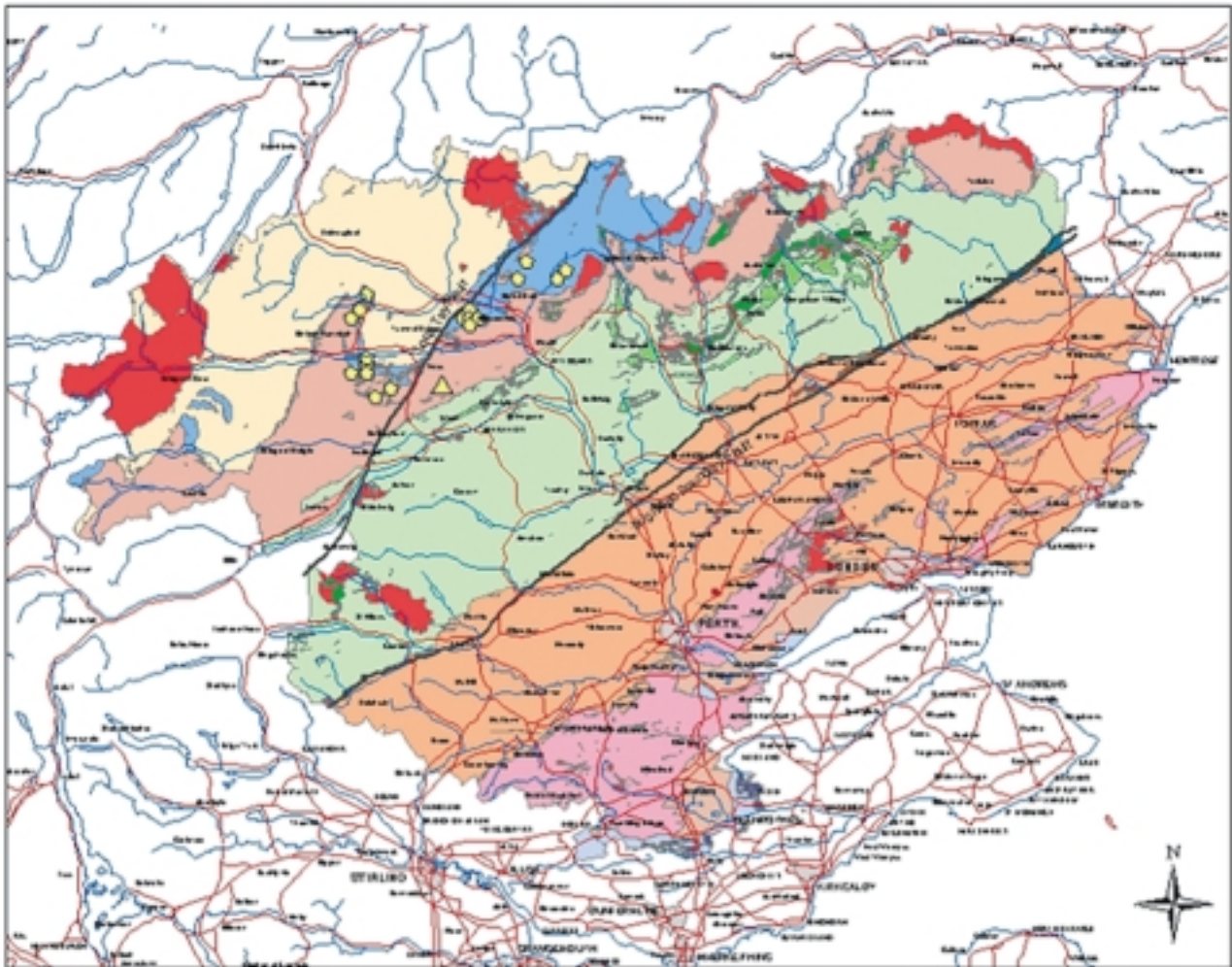


Solid Geology of Tayside



LEGEND

Highland Border Complex	IGNEOUS ROCKS	Location of Limestone Pavements
SEDIMENTARY ROCKS	Carboniferous Dikes and Sills	Location of Barbs Mine
Carboniferous	Ochil and Montrose Volcanics	Towns & Cities
Upper Devonian	Caledonian Igneous Supersuite	Faults
Lower Devonian		
Dunnottar-Craaton Group		
METAMORPHIC ROCKS		
Amphibolite		
Green Beds		
Southern Highland Group		
Argyll Group		
Appin Group		
Grampian Group		

0 5 10 20 Kilometers

Geological Data © NERC. All rights reserved.
 This map is based upon Ordnance Survey maps and other data provided by the Ordnance Survey on behalf of the Controller of Her Majesty's Stationery Office © Crown copyright 2002. Any text or other information appearing on this map is the property of the Controller of Her Majesty's Stationery Office. © Crown copyright 2002. Any text or other information appearing on this map is the property of the Controller of Her Majesty's Stationery Office.