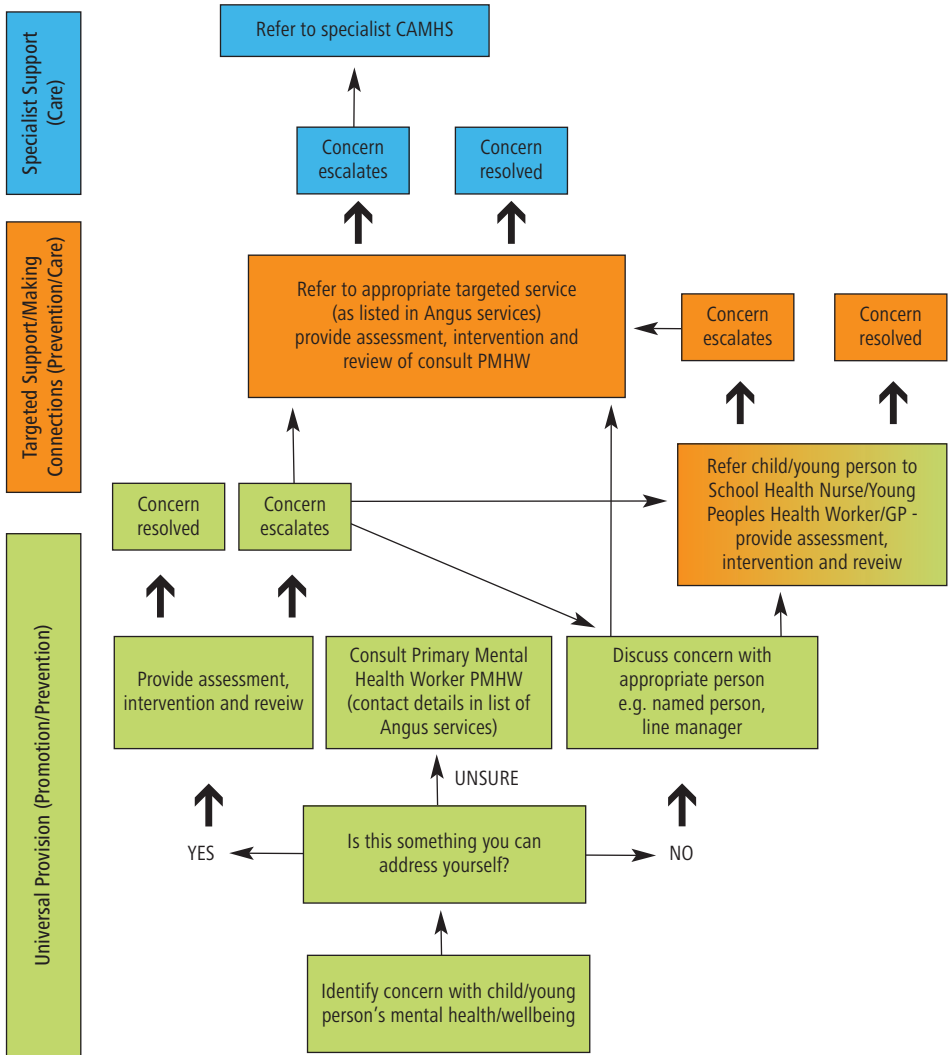


Strategic Framework for the Mental Health and Wellbeing of Children and Young People in Angus

Multi Agency Pathway (For all professionals who have contact with Children/Young People 0 – 18 Years in Angus)

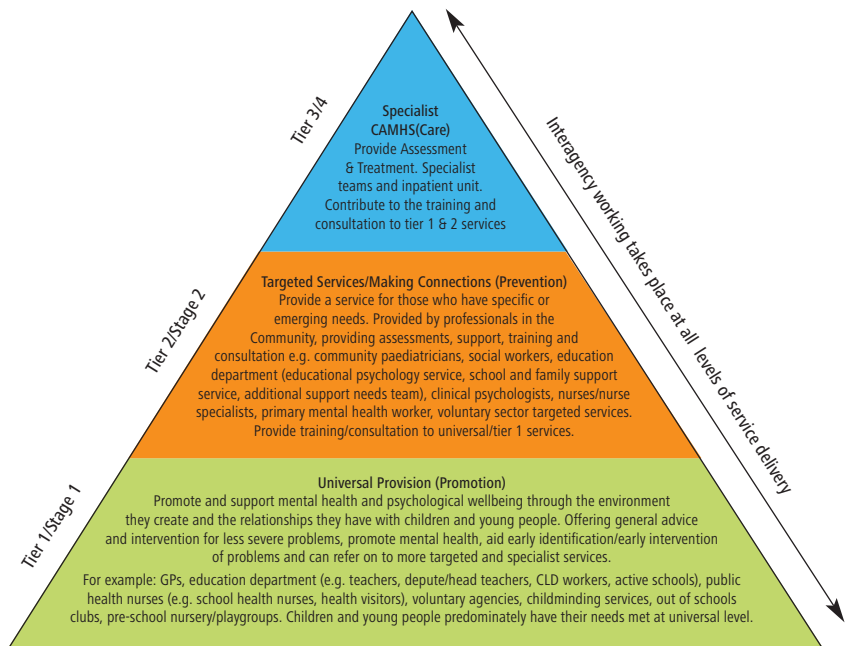


Mental Health Promotion Ongoing in Universal and Targeted Services
 GIRFEC Children's & Young People's Wellbeing Indicators: Safe, Healthy, Achieving, Nurtured, Active, Respected, Responsible, Included (S.H.A.N.A.R.R.I.)

Child and Adolescent Mental Health Service (CAMHS) Tiered Model of Provision

By adopting a broad definition of CAMHS the term refers to all professionals working directly with children, young people and their families. This broad concept of CAMHS includes those who may not have received specialist training in mental health, but whose role has an impact on children and young people's personal growth and development, therefore meeting children's needs for psychological wellbeing and mental health. This includes the staff at schools, nurseries and colleges, social work agencies, youth workers and people involved in primary health care such as school health nurses, health visitors, and GPs (universal and targeted services). Specialist CAMHS refers to professionals that come under contact details for Dudhope in Dundee.

It is important to understand that the four tier strategic framework for CAMHS is not linear; children may receive support at more than one level at the same.



REFER TO SUPPORTING DOCUMENT FOR ADDITIONAL INFORMATION AND CONTACT DETAILS FOR CHILDREN AND YOUNG PEOPLE'S SERVICES IN ANGUS