

**THE HABITATS DIRECTIVE AND REGULATIONS
ARTICLE 6**

**ASSESSMENT
of the
FINALISED ANGUS LOCAL PLAN REVIEW
(AS MODIFIED)**

**ANGUS COUNCIL
JULY 2008**

Contents

	Page
Preface	5
1 Introduction	7
2 Angus Local Plan Review	9
3 Methodology for Assessment of Plans Impact on Natura 2000 Sites	15
4 How the Local Plan Review might affect Natura 2000 sites	29
• Principal Safeguarding Policy	31
• Secondary Safeguarding Policies	32
5 Assessment of Local Plan Review	35
• Assessment of Possible Impact of Local Plan Policies, Proposals and Settlements on Natura 2000 Sites	36
6 Conclusion	53
<u>List of Illustrations</u>	
Diagram 1	Appropriate Assessment - Flowchart Summary of main steps in assessing plans 6
Table 1.1	Natura 2000 and Ramsar Sites in Angus 8
Table 2.1	Aims of the Angus Local Plan Review 10
Table 3.1	Development Plan Policies and Proposals 17
Table 3.2	Development Plan Settlements 25
<u>Appendices</u>	
Appendix 1	Checklist : Assessing Development Plans for Appropriate Assessment 55
Appendix 2	Assessment Of Natura 2000 And Ramsar Sites Against Key Local Plan Environmental Policies 67
	Appendix 2a - Summary table 67
	Appendix 2b – Firth of Tay & Eden (including Barry Links and Monifieth Bay) 59
	Appendix 2c - Loch of Kinnordy 61
	Appendix 2d - Loch of Lintrathen 63
	Appendix 2e - Montrose Basin (including Duns Dish; River South Esk (linear)) 64
	Appendix 2f - River Tay & Tributaries 66

PREFACE

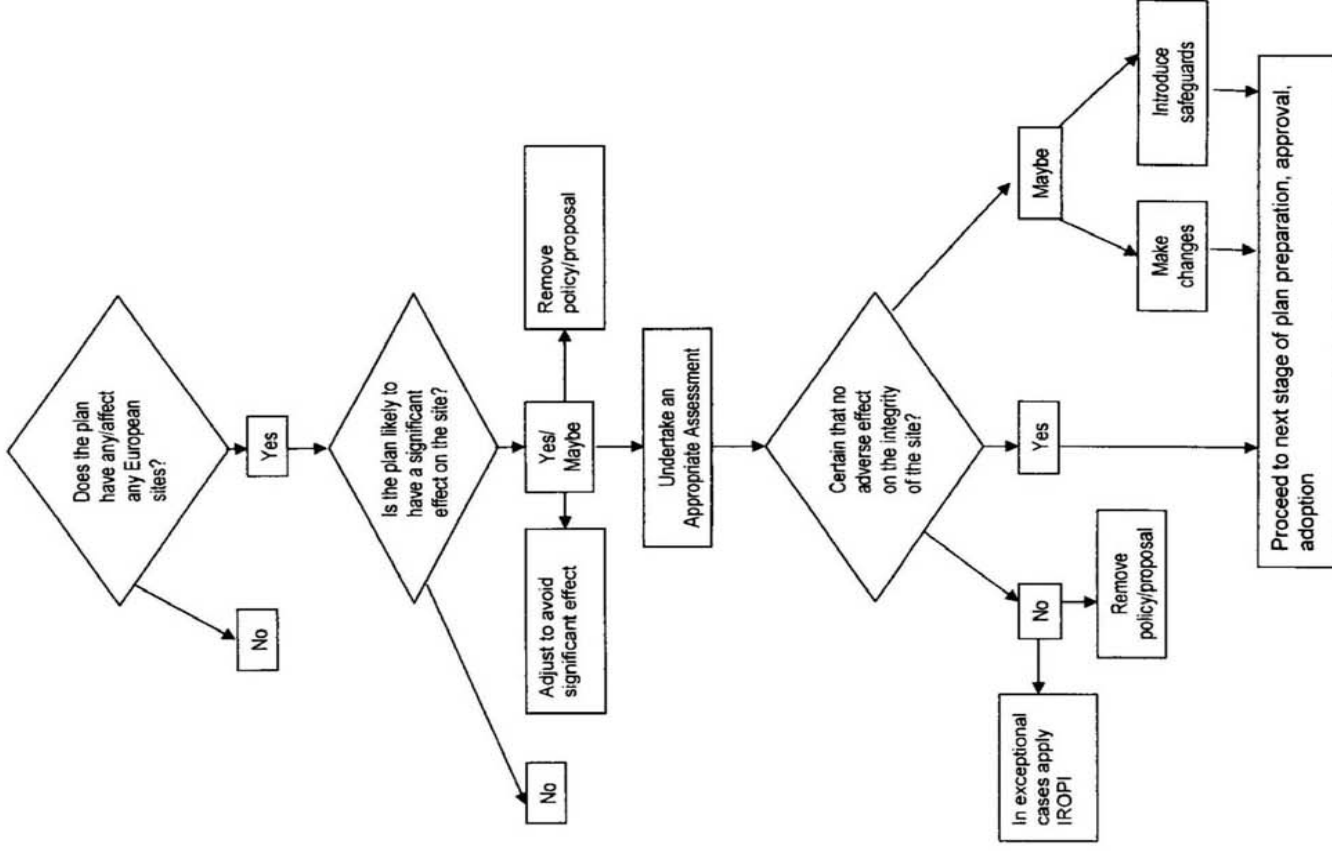
A recent European Court ruling has confirmed that Article 6(3) and 6(4) of the Habitats Directive applies to development plans. As a consequence of this ruling, Angus Council, with advice and assistance from Scottish Natural Heritage, has prepared this report to assess the effects the Angus Local Plan Review may have on European sites, which include Special Areas of Conservation (SAC's), Special Protection Areas (SPA's) and Ramsar sites.

This report concludes that subject to existing safeguards, the policies, proposals and land allocations contained in Angus Local Plan Review will not adversely affect the integrity of any Natura 2000 and Ramsar site within Angus.

Diagram 1

Appropriate Assessment - Flowchart

Summary of main steps in assessing plans



1. INTRODUCTION

In October 2005, the European Court of Justice ruled* that development plans (Structure Plans and Local Plans) in the United Kingdom should be subject to assessment, in the same way as projects require assessment, under the provisions of Article 6(3) and 6(4) of the Habitats Directive 1992.** As a consequence of this a structure plan cannot be approved by Scottish Ministers or, in the case of local plans, be adopted by a planning authority (in this case the Angus Local Plan Review by Angus Council) unless:-

- a) there has been a determination by the planning authority based on objective information that the provisions of the plan are **not** likely to have a significant effect on any European site; or
- b) an **appropriate assessment** has been carried out in respect of the provisions of the plan in line with the requirements of Article 6(3) and 6(4) of the Habitats Directive.

Diagram 1 shows the procedural steps required to assess plans.

The Scottish Executive published interim guidance on 'Assessing Development Plans in Terms of the Need for Appropriate Assessment' (May 2006), and this has been used in considering the relevance to the Finalised Angus Local Plan Review. In particular, Steps 1 to 6 of the Checklist (Appendix 1), identified in the Interim Guidance have been followed in determining whether policies and proposals in the Finalised Angus Local Plan Review are likely to have a significant effect on any European site.

Preparation of the Local Plan Review commenced in 2002 and when the Scottish Executive published its interim guidance in May 2006 the Local Plan PLI into unresolved objections had already been concluded. During the course of preparing the Local Plan Review, Angus Council undertook 3 rounds of consultation – one prior to commencement of the review, one at the Consultation Draft Stage (February 2003) and one at the Finalised Local Plan Stage (February 2005). A wide range of bodies and agencies (including Scottish Natural Heritage) were consulted at each stage and at no stage were any objections raised that any policy, proposal or land allocation had a significant impact on any Natura 2000 site in Angus.

Local Plan Area

The Angus Local Plan Review (ALPR) covers the administrative area of Angus Council with the exception of that part of upland Angus which is now within the Cairngorm National Park boundary. This area will be covered by a new Cairngorms National Park Local Plan which is currently being prepared by the National Park Authority.

* Commission of the European Communities v United Kingdom of Great Britain and Northern Ireland, Case C – 6/04 in the second chamber of the European Court of Justice, judgment 20 October 2005.

** Directive 92/43/EEC on the conservation of natural habitats and wild flora and fauna

A range of sites in Angus, covered by the Angus Local Plan Review have been recognised for their wildlife interest. Those of international importance for wild birds include Ramsar sites and Special Protection Areas (SPA's). Those of international importance for rare, vulnerable or endangered habitats and species of plants or animals are designated as Special Areas of Conservation (SAC's). Together these form a European Community wide network of protected areas, known as Natura 2000.

Within the Angus Local Plan Review area there are 4 SAC's and 4 SPA's. Of these eight Natura 2000 sites, one is both a SAC and SPA, and 4 are also designated as Ramsar sites. Details of the sites are set out in Table 1.1 overleaf.

In addition, there is a qualifying site at Caenlochan within the Angus Glens which now lies within the Cairngorm National Park boundary and is therefore excluded from the Angus Local Plan Review process. It is not considered that this site is significantly affected by policies or proposals contained in the Local Plan Review.

Table 1.1 : Natura 2000 and Ramsar Sites in Angus

Sites within the Angus Local Plan Review boundary	Qualifying interest
<p>Special Areas of Conservation (SAC's) Barry Links</p> <p>Firth of Tay & Eden Estuary (including part of Barry Links SSSI)</p> <p>River South Esk (linear)</p> <p>Part of The River Tay & its Tributaries (linear)</p>	<p>Coastal dune heathland, dune grassland, humid dune slacks, shifting dunes and shifting dunes with marram.</p> <p>Estuaries, intertidal mudflats and sandflats, subtidal sandbanks and common seal</p> <p>Atlantic salmon and freshwater pearl mussel.</p> <p>Clear-water lakes or lochs with aquatic vegetation and poor to moderate nutrient levels, Atlantic salmon, brook lamprey, otter, river lamprey and sea lamprey.</p>
<p>Special Protection Areas (SPA's) Firth of Tay & Eden Estuary* (including part of Barry Links SSSI) Loch of Kinnordy* Loch of Lintrathen* Montrose Basin* (including Duns Dish SSSI*)</p>	<p>Wintering and breeding birds Wintering birds Wintering birds Wintering and breeding birds</p>
<p>Sites within Angus but not included in Angus Local Plan Review boundary Caenlochan SPA & SAC (within the emerging Cairngorm National Park Local Plan area)</p>	<p>Diverse array of habitats Montane vascular plants Breeding dotterel Breeding golden eagles Wide range of alpine heaths and plants; scree; grasslands, fens and bogs</p>

* site which is also Ramsar

Source: Scottish Natural Heritage

2. ANGUS LOCAL PLAN REVIEW

Policy Context

The policy context for the Angus Local Plan Review is provided by a range of planning and related documents including National Planning Guidance (National Planning Policy Guidelines (NPPG's), Scottish Planning Policy (SPP's) and Planning Advice Notes (PAN's)), the approved Dundee & Angus Structure Plan (approved by Scottish Ministers October 2002), and the Angus Community Plan supported by the Local Agenda 21 Strategy for Angus.

The Angus Local Plan Review provides the detailed policy framework to guide future development, land use and investment in Angus for the period to 2011 and also looks towards 2016. It conforms to the Dundee and Angus Structure Plan which sets out the broad land use planning strategy for the area, guiding development and change for the initial ten year period 2001 – 2011 within a longer term strategy for the area extending up to 2016. The Dundee and Angus Structure Plan was subject to full consultation with all statutory consultees, including Scottish Natural Heritage (SNH), the Scottish Environment Protection Agency (SEPA) and Scottish Water (previously North of Scotland Water Authority) before being approved by Scottish Ministers.

Together with the Approved Dundee and Angus Structure Plan, the Angus Local Plan Review, when adopted, will comprise the Development Plan. This provides the framework for the development and use of land, protection of the environment and guidance for making decisions on planning applications.

Aims

The Angus Local Plan Review sets out the land use planning response and policy framework which will contribute to ensuring that the physical, social and economic needs of all communities in Angus are provided for in a sustainable manner. The key aims of the Local Plan Review are set out in Table 2.1. Ten of the aims are directly comparable with the Dundee and Angus Structure Plan and the remaining (3) reflect local circumstances in Angus. Those aims directly related to the environment are shown shaded. The Aims are based on broad themes of sustainable development which underpin the strategy and policies of this Plan addressing a range of issues arising in Angus for:

- Living and Sustainable Communities;
- Working and a Sustainable Economy;
- Accessing Services and Sustainable Transport;
- Environmental Integrity and Sustainable Resources.

These Aims are fully compatible with the Guiding Principles of the Dundee and Angus Structure Plan thereby ensuring a complementary approach which encompasses both Strategic and Local Community Interests.

Table 2.1 : Aims of the Angus Local Plan Review

- Integrate land use and transport to improve accessibility for everyone between home, work, leisure and services with a view to reducing unnecessary travel.
- Create the conditions for a vibrant and diverse economy providing increased and varied job opportunities.
- Promote urban renewal and community regeneration and address rural and urban disadvantage to reduce poverty and inequality.
- Give priority to the reuse of previously developed sites where appropriate.
- Promote environmentally sustainable use of existing and planned infrastructure and service capacity to support and facilitate development.
- Provide for local housing need, and ensure access to affordable housing.
- Encourage the continued development and maintenance of viable and vital communities with an appropriate range of essential facilities.
- Promote community safety and reduce community severance caused by road traffic.
- Promote access to the countryside for residents and visitors.
- Promote the use of renewable energy and resources, the efficient use of energy and the reuse, recovery and recycling of waste.
- Reduce pollution from developments and traffic.
- Protect and promote the quality and diversity of the built and natural environment, including the heritage, biodiversity and landscape of Angus.
- Plan for climate change by maintaining existing undeveloped coasts, and protecting flood plains from development.

Development Strategy

The development strategy of the Local Plan Review seeks to meet the stated aims of the Plan and sets the context within which the policies and proposals of the Plan provide for the sustainable development of Angus and the protection of the wider environment.

The Development Strategy of the Local Plan Review is to:

- Draw on the inherent strengths and synergy of the close network of Angus towns and villages, and consolidate the role of the seven towns as locally accessible centres serving a diverse rural hinterland;
- Guide and encourage the majority of development, including local housing and employment opportunities, to locations within the larger settlements that have the capacity to accommodate new development well integrated with transport infrastructure.
- Provide opportunities for diversification of the rural economy;
- Maintain and protect the diversity and quality of the rural area and encourage local development which supports the population and services of local communities;
- Support the protection and enhancement of the countryside; and
- Maintain the quality of valued landscapes; the natural, built and historic environment; and biodiversity.

One of the principal objectives of the Development Strategy is to direct the majority of new development to the main settlements. Each of the seven towns in Angus – Arbroath, Brechin, Carnoustie, Forfar, Kirriemuir, Monifieth and Montrose - provides a central focus for a wide range of services and facilities, and serves a diverse rural hinterland with a network of smaller settlements. The towns are the natural focus for the majority of new development, where there is opportunity to accommodate new homes and business opportunities well related to and connected with existing land uses and transport networks.

The policy framework that will manage and guide sustainable development in Angus is set out under Building Sustainable Communities; Environment and Resources, and settlement statements for the Angus towns and villages.

Policy Framework

Building Sustainable Communities

Key elements of sustainable and vibrant places include a variety of quality, affordable homes in attractive locations, access to the right type of job, interesting and exciting leisure pursuits, and a wide range of shops and services. In such communities there is a careful balance between the need for new development and the protection of the local environment, development is energy efficient and does not generate unnecessary waste and pollution, people don't have to travel far between home, work, shops and leisure and where they have to there are a variety of ways to get around.

In helping to build sustainable communities in Angus the Local Plan Review gives priority to:

- Guiding the majority of development such as housing, employment, retail and leisure to locations within the Angus towns and villages which can best accommodate development making use of existing and planned transport and other infrastructure;
- Locating residential, employment, leisure and shopping uses in proximity to one another in order to improve accessibility for all and minimise the need to travel;
- Locating new developments, particularly those generating high levels of traffic, to sites where there is a choice of means of transport;
- Providing a mix and range of housing developments to meet the needs and aspirations of all sectors of the community;
- Providing a range of employment sites in key locations to meet demand and stimulate investment in Angus, and making provision for rural diversification projects;
- Supporting the maintenance and improvement of the transport network to provide safe and efficient ways to travel, including promoting alternatives to the use of the private car;
- Supporting the provision of a range of facilities such as shops, schools, hospitals and other public facilities to serve local areas;
- Ensuring development makes a contribution towards protection of the environment, resource management, reducing pollution, and developing energy efficiency.

Environment and Resources

The environmental assets and resources of Angus have long been recognised as important in both local and national terms. The area is essentially rural in nature with an interdependent network of seven towns and numerous villages. The diverse landscape ranges from sandy beaches and cliffs along the 55km coastline, the attractive and productive Strathmore valley with its market towns, to the remote splendour of the upland areas of the Glens. Angus has a rich and varied biodiversity that is reflected in the broad range of sites designated for their natural heritage value and when combined with the areas distinctive built heritage and important historic environment provide a high quality environment, attractive to both residents and visitors.

Within this context, protecting and enhancing the environmental assets and built and historic heritage of Angus is central to the Council's approach to the sustainable development and the use of the areas finite and non-renewable resources which can help to enhance the health and quality of life for both present and future generations of people living and working in Angus.

The capacity of the natural and built environment of Angus to accept development and absorb change varies from area to area depending on local characteristics. The Local Plan complements the aims set out in the Dundee and Angus Structure Plan for the sustainable management of the areas environmental resources by giving priority to:

- protecting and enhancing wildlife habitats identified as being of international, national or local importance;
- protecting and enhancing the biodiversity of Angus;
- conserving and enhancing important landscapes and landscape features and ensuring that new development is sympathetic to landscape character;

- protecting and enhancing the quality of the built and historic environment and ensuring that development proposals respect local characteristics;
- promoting the sustainable use of water resources and ensuring that new development does not exacerbate any flood risk;
- promoting the integrated management of the coastal area and minimising unnecessary coastal development;
- guiding proposals for renewable energy;
- safeguarding good quality agricultural land from inappropriate and irreversible development;
- providing a framework for the selection of sites for mineral extraction, landfill and land raise developments to minimise environmental damage to landscape, heritage and environmental assets.

The Local Plan Review also establishes a set of general development policies which apply to all development. These relate to:

- S1: Development Boundaries;
- S2: Accessible Development;
- S3: Design Quality;
- S4: Environmental Protection;
- S5: Safeguard Areas; and
- S6: Development Principles.

Town Based Land Allocations and Policies

In addition the Angus Local Plan Review contains a range of land use allocations for development which may have an impact on the conservation interests of a designated European site. Where appropriate these are referred to in the assessment of impacts on individual Natura 2000 or Ramsar sites.

Arbroath

No proximity to any Natura 2000 or Ramsar site.

No Local Plan allocation or proposal directly or indirectly affecting any Natura 2000 or Ramsar site.

Brechin

River South Esk SAC

No Local Plan allocation directly or indirectly affecting Natura 2000 site.

Angus Council intend to construct a flood prevention scheme along the River Street frontage to the River South Esk (See B13: Brechin Flood Prevention Scheme below).

B13: Brechin Flood Prevention Scheme

The project is being developed in full consultation with relevant agencies and has been subject to a separate Environmental Assessment.

Carnoustie & Barry

Firth of Tay & Eden Estuary (SAC/SPA/Ramsar) (including part of Barry Links SSSI)

No Local Plan allocation or proposal directly or indirectly affecting Natura 2000 site.

Forfar

River Tay and Tributaries (SAC)

No Local Plan allocation or proposal directly or indirectly affecting Natura 2000 site.

Kirriemuir

River Tay and Tributaries (SAC)

No Local Plan allocation or proposal directly or indirectly affecting any Natura 2000 or Ramsar site.

Monifieth

Firth of Tay & Eden Estuary (SAC/SPA/Ramsar) (including part of Barry Links SSSI)

No Local Plan allocation or proposal directly or indirectly affecting Natura 2000 and Ramsar site.

Montrose Including Ferryden and Hillside

Montrose Basin (SPA/Ramsar) (including Duns Dish SSSI)

No Local Plan allocation or proposal directly or indirectly affecting Natura 2000 and Ramsar site.

3. METHODOLOGY FOR ASSESSMENT OF PLANS IMPACT ON NATURA 2000 SITES

Although the intention of the regulations is that the process of Appropriate Assessment of development plans is carried out as early as possible during the preparation of a Local Plan to allow alternative policies, proposals and site allocations to be considered, Angus Council are required to carry out this new procedure retrospectively for the Angus Local Plan Review. Preparation of the Local Plan Review commenced in 2002 and when the Scottish Executive published its interim guidance in May 2006 the Local Plan Public Local Inquiry into unresolved objections had already been concluded. The Local Plan Review has therefore reached an advanced stage in the process. During the course of preparing the Local Plan Review, Angus Council undertook 3 rounds of consultation – one prior to commencement of the review, one at the Consultation Draft Stage (February 2003) and one at the Finalised Local Plan Stage (February 2005). A wide range of bodies and agencies (including Scottish Natural Heritage) were consulted at each stage and at no stage were any objections raised that any policy, proposal or land allocation had a significant impact on any Natura 2000 site in Angus.

Angus Council has followed the guidance and methodology set out in the Scottish Executive Interim Guidance on “Assessing Development Plans under Articles 6(3) and 6(4) of the Habitats Directive in terms of the Need for Appropriate Assessment”.

The methodology is as follows:

- Establish the level of protection afforded to Natura 2000 and Ramsar Sites by the Local Plan policies;
- Screening to identify Local Plan policies that could impact on Natura 2000 sites as well as identification of settlements and rural communities that are in close proximity to Natura sites;
- The information is depicted in the form of a matrix detailing the assessment of each policy and settlement covered by the Local Plan; and

A likely significant effect is defined/considered as any effect that may be reasonably predicted as a consequence of implementation of any plan, proposal or policy contained in the Local Plan.

All the Local Plan policies have been considered in order to determine whether or not their implementation/application would result in a significant effect on any Natura 2000 and Ramsar site. Those policies not considered to have an impact have been identified and the reasons for this given. Any policy or proposal, or land allocation in a settlement which is identified as having a likely significant effect on any Natura 2000 or Ramsar site will be subject to appropriate assessment and given further consideration to determine whether any affected designated site will be protected by application of the identified principal and secondary safeguarding policies or any impacts can be adequately mitigated.

The screening process has been based on the intent of the policy, location of designations, application of policy as well as potential magnitude and extent of effects. The potential impact has been assessed based on Planning and Transport Officers professional judgment and consultation with SNH.

The potential impact of the Local Plan on individual Natura 2000 sites has been illustrated in the form matrices showing site specific designations and policies against each site. Each matrix considers the qualifying interests of the site, its sensitivities, assessment of potential development affecting the site, safeguarding policies, mitigation and draws conclusions on any likely significant effects on a Natura 2000 or Ramsar site. Where necessary, Appropriate Assessment has been undertaken.

Table 3.1: Development Plan Policies and Proposals

Policy No.	Policy Title	Likely Significant Effect on any Natura 2000 Site - AA required	Reason Why No Likely Significant Effect (LSE)
S1	Development Boundaries	No	Safeguarding Policy. Specifies the approach to development proposals within, outwith and contiguous with development boundaries established by the Local Plan. The development boundaries have been defined to protect the landscape setting of towns and villages and to prevent uncontrolled growth. Does not propose development.
S2	Accessible Development	No	Details the accessibility criteria to be applied to any development proposal. Does not propose development.
S3	Design Quality	No	Relates to detailed design matters. Subsidiary policy that does not propose development.
S4	Environmental Protection	No	Safeguarding Policy. Relates to general protection of the environment and amenity of a neighbourhood from unacceptable affects of development proposals.
S5	Safeguard Areas	No	Safeguarding Policy. Relates to protection of notifiable installations from new development. Does not propose new development.
S6	Development Principles	No	Specifies a range of guidelines which should be considered in assessing relevant development proposals. Does not propose any specific development.
SC1	Housing Land Supply	No	Specifies requirement to allocate housing land in accordance with approved Structure Plan. Does not allocate specific sites.
SC2	Small Sites	No	Policy outlining approach for assessing proposals for small housing sites (less than 5 dwellings) within settlement development boundaries.
SC3	Windfall Sites	No	Criteria based policy for assessing proposals for 5 or more houses on windfall sites within settlement development boundaries. Does not allocate specific sites.
SC4	Countryside Housing – Retention of Existing Houses	No	Policy seeking to secure the retention and renovation of existing houses in the countryside. Does not identify specific properties.
SC5	Countryside Housing – Conversion of Non-Residential Buildings	No	Criteria based policy for assessing proposals for residential homes. Does not allocate or identify specific sites.
SC6	Countryside Housing – New Houses	No	Criteria based policy for assessing proposals for new housing in countryside locations. Does not allocate or identify specific sites.
SC7	Essential Worker Housing	No	Criteria based policy for assessing proposals for essential worker housing in countryside locations. Does not allocate or identify specific sites.
SC8	New Country Houses	No	Criteria based policy for assessing proposals for new large country houses. Does not allocate or identify specific sites

Policy No.	Policy Title	Likely Significant Effect on any Natura 2000 Site - AA required	Reason Why No Likely Significant Effect (LSE)
SC9	Affordable Housing	No	Criteria based policy supporting appropriate provision of affordable housing. Does not allocate specific sites
SC10	Special Needs Housing	No	Criteria based policy supporting appropriate provision of special needs housing. Does not allocate specific sites.
SC11	Residential Homes	No	Criteria based policy for assessing proposals for residential homes. Does not allocate specific sites.
SC12	Residential Caravans	No	Criteria based policy for assessing proposals for residential caravan sites. Does not allocate specific sites.
SC13	Sites for Gypsies/Travellers	No	Criteria based policy for assessing proposals for sites for gypsies/travellers. Does not allocate specific sites.
SC14	Villa Property	No	Criteria based policy for assessing proposals for new housing in the grounds of stone built villa properties. Only applies within development boundaries. Not considered likely to have a significant impact on any Natura 2000 or Ramsar site.
SC15	House Extensions	No	Criteria based policy for assessing proposals for extending existing houses. Not considered likely to have a significant impact on any Natura 2000 or Ramsar site
SC16	Employment Land Supply	No	Specifies requirement to allocate employment land in accordance with approved Structure Plan. Does not allocate development sites. Not considered likely to have a significant impact on any Natura 2000 or Ramsar site
SC17	Industrial and Business Use	No	Criteria based policy for assessing proposals for essential worker housing within settlement development boundaries. Does not allocate or identify specific sites. Not considered likely to have a significant impact on any Natura 2000 or Ramsar site
SC18	Working from Home	No	Policy supporting potential for people to work from home where compatible with the amenity of neighbours or surrounding area. Not considered likely to have a significant impact on any Natura 2000 or Ramsar site.
SC19	Rural Employment	No	Policy supporting opportunities for rural employment where they make a positive contribution to the rural economy and are of a scale and nature appropriate for the location. Does not allocate or identify specific sites. Not considered likely to have a significant impact on any Natura 2000 or Ramsar site.
SC20	Tourism Development	No	Criteria based policy for assessing proposals for tourism development. Does not allocate or identify specific sites.

Policy No.	Policy Title	Likely Significant Effect on any Natura 2000 Site - AA required	Reason Why No Likely Significant Effect (LSE)
SC21	Caravan Sites and Holiday Chalets	No	Criteria based policy for assessing proposals for caravan and holiday chalet developments. Does not allocate or identify specific sites.
SC22	Defence Establishments	No	General policy reserving defence establishments for military use. Future proposals for redevelopment or reuse of land and/or buildings declared surplus will be considered in the context of Structure and Local Plan policies including primary and secondary safeguard policies.
SC23	Support for Town Centres	No	Defined town centres are confined to central area of the seven main towns (Arbroath, Brechin, Carnoustie, Forfar, Kirriemuir, Monifieth and Montrose). Not considered likely to have any impact on any Natura 2000 or Ramsar site.
SC24	Core Retail Areas	No	Core Retail Areas are confined to central area of five of the main towns (Arbroath, Brechin, Forfar, Kirriemuir and Montrose). Not considered likely to have any impact on any Natura 2000 or Ramsar site.
SC25	Upper Floor Use	No	Policy applies to properties within defined town centres of the seven main towns (Arbroath, Brechin, Carnoustie, Forfar, Kirriemuir, Monifieth and Montrose). Not considered likely to have any impact on any Natura 2000 or Ramsar site.
SC26	Large Scale Retail Development Proposals	No	Criteria based policy for assessing development proposals within settlements. Not considered likely to have a significant impact on any Natura 2000 or Ramsar site.
SC27	Local Shops	No	Criteria based policy for assessing proposals for local shops. Does not allocate or identify specific locations. Not considered likely to have a significant impact on any Natura 2000 or Ramsar site.
SC28	Public Houses and Hot Food Takeaways, Restaurants and Cafes	No	Criteria based policy for assessing development proposals in mixed use areas or town centres. Not considered likely to have a significant impact on any Natura 2000 or Ramsar site.
SC29	Amusement Arcades	No	Criteria based policy for assessing development proposals within town centres. Not considered likely to have any impact on any Natura 2000 or Ramsar site.
SC30	Car Showrooms	No	Criteria based policy for assessing proposals for car showrooms. Only applies within development boundaries. Not considered likely to have a significant impact on any Natura 2000 or Ramsar site.
SC31	Sports and Recreation Facilities	No	Criteria based policy for assessing proposals for new or enhanced sport and recreational facilities. Generally directs that such facilities should be located within development boundaries. Does not allocate or identify specific locations.
SC32	Open Space Protection	No	Safeguarding policy aimed at protecting existing open space provision from development.

Policy No.	Policy Title	Likely Significant Effect on any Natura 2000 Site - AA required	Reason Why No Likely Significant Effect (LSE)
SC33	Open Space Provision	No	Criteria based policy requiring provision of open space as part of development proposals. Not considered likely to have a significant impact on any Natura 2000 or Ramsar site.
SC34	Noisy Sports	No	Criteria based policy for assessing proposals for noisy sports. Seeks to minimise the potential impact of development on landscape and environment. Does not allocate or identify specific sites.
SC35	New Golf Course Development	No	Criteria based policy for assessing proposals for golf course development. Does not allocate or identify specific sites or locations. Any proposal considered likely to have a significant impact on any Natura 2000 or Ramsar site will require to undertake Appropriate Assessment.
SC36	Access Rights	No	Safeguarding policy aimed at protecting existing access rights.
SC37	Healthcare Facilities	No	Safeguarding policy aimed at reserving land and buildings for healthcare use.
SC38	Community Use of School Facilities	No	Criteria based policy supporting use of school facilities for extra curricular sporting, recreation or community uses. Not considered likely to have a significant impact on any Natura 2000 or Ramsar site.
SC39	Safeguard of Land for Cemetery Use	No	Policy supporting reservation of land for cemetery purposes in various rural settlements. No proximity to any Natura 2000 or Ramsar site.
SC40	Walking and Cycling	No	General policy encouraging initiatives to enhance accessibility for walking and cycling. Where appropriate individual projects will require to undertake Appropriate Assessment.
SC41	Bus Transport	No	Policy supporting provision and improvement of public transport facilities and services.
SC42	Rail Station Improvements	No	No direct or indirect impact on any Nature 2000 or Ramsar site.
SC43	Upgrade of A92/A930	No	No direct or indirect impact on any Nature 2000 or Ramsar site.
SC44	Road Network Improvements	No	Policy allows consideration of potential upgrading of A92 between Arbroath and the Aberdeenshire boundary and the A935 between Montrose and Brechin. Any potential impacts on any Natura 2000 or Ramsar site will be considered during the assessment of any potential project.

Policy No.	Policy Title	Likely Significant Effect on any Natura 2000 Site - AA required	Reason Why No Likely Significant Effect (LSE)
SC45	Roadside Facilities on the A90(T)	No	Specific policy for roadside facilities on the A90(T). No proximity to any Natura 2000 or Ramsar site.
SC46	Roadside Facilities on the A92	No	Specific policy for roadside facilities on the A92. No proximity to any Natura 2000 or Ramsar site.
SC47	Rail and Sea Freight Facilities	No	Specific policy providing general support for freight facilities convenient and accessible to the rail network and Montrose Port. Does not propose any development sites.
SC48	Telecommunications	No	Criteria based policy for assessing proposals for telecommunications development. Does not allocate or identify specific sites.
ER1	Natura 2000 and Ramsar Sites	No	Principal Safeguarding Policy (page 31) to ensure appropriate protection of the conservation interests of internationally important sites.
ER2	National Nature Reserves and Sites of Special Scientific Interest	No	Safeguarding Policy aimed at ensuring appropriate protection for nationally important natural heritage designations.
ER3	Regional and Local designations	No	Safeguarding Policy aimed at securing appropriate protection for regional and locally important natural heritage designations.
ER4	Wider Natural Heritage and Biodiversity	No	Safeguarding Policy aimed at ensuring appropriate consideration of natural heritage and biodiversity interests in assessing development proposals.
ER5	Conservation of Landscape Character	No	Establishes Policy approach to protecting landscape character of Angus
ER6	Trees, Woodlands and Hedgerows	No	Safeguarding Policy to protect trees, woodlands and hedgerows which have a landscape, amenity and/or nature conservation value from development.
ER7	Trees on Development Sites	No	Safeguarding Policy. Sets out criteria for assessing development proposals affecting sites with existing trees and hedges.
ER8	Commercial Forestry Development	No	General policy supporting proposals for afforestation which accord with the Tayside Indicative Forestry Strategy and Tayside Landscape Character Assessment.
ER9	Advertising in the Countryside	No	Establishes policy approach for considering proposals for advertising in the countryside. Not considered likely to have a significant impact on any Natura 2000 or Ramsar site.
ER10	Light Pollution	No	Safeguarding Policy. Seeks to minimise light pollution from new development.
ER11	Noise Pollution	No	Safeguarding Policy. Seeks to minimise noise pollution from new development.
ER12	Development Affecting Conservation Areas	No	Safeguarding Policy. Sets out criteria for assessing proposal affecting Conservation Areas.

Policy No.	Policy Title	Likely Significant Effect on any Natura 2000 Site - AA required	Reason Why No Likely Significant Effect (LSE)
ER13	Demolition of Buildings in Conservation Areas	No	Safeguarding Policy. Sets out criteria for assessing proposal affecting Conservation Areas.
ER14	Trees in Conservation Areas	No	Safeguarding Policy. Sets out criteria for assessing proposal affecting Conservation Areas.
ER15	Change of Use, Alterations and extension to Listed Buildings	No	Safeguarding Policy. Sets out the criteria for assessing development proposals affecting Listed Buildings.
ER16	Development Affecting the Setting of a Listed Building	No	Safeguarding Policy. Sets out the criteria for assessing development proposals affecting Listed Buildings.
ER17	Demolition of Listed Buildings	No	Safeguarding Policy. Sets out the criteria for assessing proposals for the demolition of Listed Buildings.
ER18	Archaeological Sites of National Importance	No	Safeguarding Policy. Sets out criteria for assessing development proposals affecting nationally important archaeological sites.
ER19	Archaeological Sites of Local Importance	No	Safeguarding Policy. Sets out criteria for assessing development proposals affecting locally important archaeological sites.
ER20	Historic Gardens and Designed Landscapes	No	Safeguarding Policy. Sets out criteria for assessing development proposals affecting historic gardens and designed landscapes.
ER21	Design Guidance	No	Establishes design guidance for a range of development proposals. Policy does not propose/promote development.
ER22	Public Drainage Systems	No	Policy directing that all development within development boundaries served by public sewers must be connected to public drainage system. The outflow for public drainage networks is controlled through separate regulatory system enforced by SEPA.
ER23	Private Drainage Systems	No	Criteria based policy for assessing development proposals requiring the provision of private drainage systems
ER24	Surface Water Disposal	No	Policy promoting the SUDS approach to dealing with surface water drainage from all new development. Promotes an approach to minimise the risk of flooding and the pollution of water courses, lochs and groundwater. Close liaison with SEPA over proposals.
ER25	Water Resource Protection	No	Safeguarding Policy aimed at protecting the potable quality of public and private water supplies.

Policy No.	Policy Title	Likely Significant Effect on any Natura 2000 Site - AA required	Reason Why No Likely Significant Effect (LSE)
ER26	Private Water Supplies	No	Safeguarding Policy. Sets out criteria for assessing development proposals requiring a private water supply.
ER27	Flood Risk – Consultation	No	Safeguarding policy. Specifies Angus Council will routinely consult SEPA over development proposals adjacent to or potentially affected by watercourses and lochs of known potential flood risk.
ER28	Flood Risk Assessment	No	Policy detailing the standards of flood protection applied to various form of development. Does not propose/promote development.
ER29	Coastal Development	No	Secondary Safeguarding Policy (page 32). Seeks to protect undeveloped coastline from inappropriate development. Generally directs new development to developed coast and sets out criteria for assessing development proposals for undeveloped coast.
ER30	Agricultural Land	No	Safeguarding Policy. Seeks to protect prime quality agricultural land from inappropriate and irreversible development.
ER31	Intensive Livestock Buildings	No	Criteria based policy for assessing proposals for intensive livestock buildings.
ER32	Minerals	No	Secondary Safeguarding Policy (page 32). Criteria based policy for assessing proposals for mineral development. Incorporates measures to ensure protection environmental resources.
ER33	Energy Efficiency	No	Policy promoting the use of energy efficiency measures in development proposals.
ER34	Renewable Energy Developments	No	Secondary Safeguarding Policy (page 33). Criteria based policy for assessing proposals for renewable energy development. Incorporates measures to ensure protection environmental resources. Linked to Policy ER39 below.
ER35	Wind Energy Development	No	Secondary Safeguarding Policy (page 33). Criteria based policy for assessing proposals for wind energy development. Incorporates measures to ensure protection environmental resources. Linked to Policy ER39 below.
ER36	Municipal Solid Waste Management	No	Secondary Safeguarding Policy (page 33). Criteria based policy for assessing proposals for mineral development. Incorporates measures to ensure protection environmental resources. Linked to Policy ER39 below.

Policy No.	Policy Title	Likely Significant Effect on any Natura 2000 Site - AA required	Reason Why No Likely Significant Effect (LSE)
ER37	Non-Municipal Solid Waste Management	No	Secondary Safeguarding Policy (pages 33/34). Criteria based policy for assessing proposals for mineral development. Incorporates measures to ensure protection environmental resources. Linked to Policy ER39 below.
ER38	Recycling Facilities	No	Policy promoting the provision of recycling facilities as part of new development. Supports the Tayside Area Waste Plan and Angus Waste Implementation Plan
ER39	Sequential Approach for Mineral Extraction, Landfill and Land Raise Proposals	No	Secondary Safeguarding Policy (page 32/33, 34). Establishes a sequential approach to directing proposals for mineral extraction, landfill and land raise development taking full account of a hierarchy of international, national and local designations. Seeks to direct development to the least sensitive areas.
ER40	Contaminated Land	No	Relates to the investigation of possible contaminated land and the requirement to undertake appropriate remedial measure prior to development. Does not propose development
Imp1	Developer Contributions	No	Relates to potential developer contributions from individual development projects. Subsidiary policy that does not propose development
Imp2	Enforcement of Planning Control	No	Relates to the enforcement of planning control as appropriate. Does not propose development.

Table 3.2: Development Plan Settlements

Settlement	Likely Significant Effect on any Natura 2000 Site - AA required	Reason Why No Likely Significant Effect (LSE)
Towns		
Arbroath	No	No Local Plan allocation or proposal directly or indirectly affecting any Natura 2000 or Ramsar Site
Brechin	Yes	See River South Esk SAC (linear) – pages 40 - 42.
Carnoustie	No	No Local Plan allocation or proposal directly or indirectly affecting any Natura 2000 or Ramsar Site
Forfar	No	No Local Plan allocation or proposal directly or indirectly affecting any Natura 2000 or Ramsar Site
Kirriemuir	No	No Local Plan allocation or proposal directly or indirectly affecting any Natura 2000 or Ramsar Site
Monifieth	No	No Local Plan allocation or proposal directly or indirectly affecting any Natura 2000 or Ramsar Site
Montrose	No	No Local Plan allocation or proposal directly or indirectly affecting any Natura 2000 or Ramsar Site
		No Local Plan allocation or proposal directly or indirectly affecting any Natura 2000 or Ramsar Site
Villages		
Aberlemno	No	No Local Plan allocation or proposal directly or indirectly affecting any Natura 2000 or Ramsar Site
Airlie	No	No Local Plan allocation or proposal directly or indirectly affecting any Natura 2000 or Ramsar Site
Arbirlot	No	No Local Plan allocation or proposal directly or indirectly affecting any Natura 2000 or Ramsar Site
Auchmithie	No	No Local Plan allocation or proposal directly or indirectly affecting any Natura 2000 or Ramsar Site
Auchterhouse	No	No Local Plan allocation or proposal directly or indirectly affecting any Natura 2000 or Ramsar Site
Balgray	No	No Local Plan allocation or proposal directly or indirectly affecting any Natura 2000 or Ramsar Site
Balhall	No	No Local Plan allocation or proposal directly or indirectly affecting any Natura 2000 or Ramsar Site
Balkeerie and Eassie	No	No Local Plan allocation or proposal directly or indirectly affecting any Natura 2000 or Ramsar Site
Ballumbie House	No	No Local Plan allocation or proposal directly or indirectly affecting any Natura 2000 or Ramsar Site
Barnhead	No	No Local Plan allocation or proposal directly or indirectly affecting any Natura 2000 or Ramsar Site
Birkhill/Muirhead	No	No Local Plan allocation or proposal directly or indirectly affecting any Natura 2000 or Ramsar Site
Bogindollo	No	No Local Plan allocation or proposal directly or indirectly affecting any Natura 2000 or Ramsar Site
Bowriefauld	No	No Local Plan allocation or proposal directly or indirectly affecting any Natura 2000 or Ramsar Site
Braehead of Lunan	No	No Local Plan allocation or proposal directly or indirectly affecting any Natura 2000 or Ramsar Site
Bridge of Dun	No	No Local Plan allocation or proposal directly or indirectly affecting any Natura 2000 or Ramsar Site
Bridgend of Lethnot	No	No Local Plan allocation or proposal directly or indirectly affecting any Natura 2000 or Ramsar Site
Bridgend of Lintrathen	No	No Local Plan allocation or proposal directly or indirectly affecting any Natura 2000 or Ramsar Site

Settlement	Likely Significant Effect on any Natura 2000 Site - AA required	Reason Why No Likely Significant Effect (LSE)
Bridgefoot & Strathmartine	No	No Local Plan allocation or proposal directly or indirectly affecting any Natura 2000 or Ramsar Site
Bucklerheads	No	No Local Plan allocation or proposal directly or indirectly affecting any Natura 2000 or Ramsar Site
Burnside of Duntrune	No	No Local Plan allocation or proposal directly or indirectly affecting any Natura 2000 or Ramsar Site
Charleston	No	No Local Plan allocation or proposal directly or indirectly affecting any Natura 2000 or Ramsar Site
Colliston	No	No Local Plan allocation or proposal directly or indirectly affecting any Natura 2000 or Ramsar Site
Cortachy	No	No Local Plan allocation or proposal directly or indirectly affecting any Natura 2000 or Ramsar Site
Craichie	No	No Local Plan allocation or proposal directly or indirectly affecting any Natura 2000 or Ramsar Site
Craigo	No	No Local Plan allocation or proposal directly or indirectly affecting any Natura 2000 or Ramsar Site
Craigton of Airlie	No	No Local Plan allocation or proposal directly or indirectly affecting any Natura 2000 or Ramsar Site
Craigton of Monikie	No	No Local Plan allocation or proposal directly or indirectly affecting any Natura 2000 or Ramsar Site
Douglastown	No	No Local Plan allocation or proposal directly or indirectly affecting any Natura 2000 or Ramsar Site
Dunnichen	No	No Local Plan allocation or proposal directly or indirectly affecting any Natura 2000 or Ramsar Site
Dykehead	No	No Local Plan allocation or proposal directly or indirectly affecting any Natura 2000 or Ramsar Site
Eassie Muir	No	No Local Plan allocation or proposal directly or indirectly affecting any Natura 2000 or Ramsar Site
Easthaven	No	No Local Plan allocation or proposal directly or indirectly affecting any Natura 2000 or Ramsar Site
Edzell	No	No Local Plan allocation or proposal directly or indirectly affecting any Natura 2000 or Ramsar Site
Farnell	No	No Local Plan allocation or proposal directly or indirectly affecting any Natura 2000 or Ramsar Site
Fern	No	No Local Plan allocation or proposal directly or indirectly affecting any Natura 2000 or Ramsar Site
Finavon	No	No Local Plan allocation or proposal directly or indirectly affecting any Natura 2000 or Ramsar Site
Folda	No	No Local Plan allocation or proposal directly or indirectly affecting any Natura 2000 or Ramsar Site
Fowlis Easter	No	No Local Plan allocation or proposal directly or indirectly affecting any Natura 2000 or Ramsar Site
Friockheim	No	No Local Plan allocation or proposal directly or indirectly affecting any Natura 2000 or Ramsar Site
Gateside	No	No Local Plan allocation or proposal directly or indirectly affecting any Natura 2000 or Ramsar Site
Glamis	No	No Local Plan allocation or proposal directly or indirectly affecting any Natura 2000 or Ramsar Site
Greystone	No	No Local Plan allocation or proposal directly or indirectly affecting any Natura 2000 or Ramsar Site
Guthrie and Cotton of Guthrie	No	No Local Plan allocation or proposal directly or indirectly affecting any Natura 2000 or Ramsar Site
Inchbare	No	No Local Plan allocation or proposal directly or indirectly affecting any Natura 2000 or Ramsar Site
Inveraldie/Tealing	No	No Local Plan allocation or proposal directly or indirectly affecting any Natura 2000 or Ramsar Site
Inverarity	No	No Local Plan allocation or proposal directly or indirectly affecting any Natura 2000 or Ramsar Site
Inverkeillor	No	No Local Plan allocation or proposal directly or indirectly affecting any Natura 2000 or Ramsar Site

Settlement	Likely Significant Effect on any Natura 2000 Site - AA required	Reason Why No Likely Significant Effect (LSE)
Kellas	No	No Local Plan allocation or proposal directly or indirectly affecting any Natura 2000 or Ramsar Site
Kingsmuir	No	No Local Plan allocation or proposal directly or indirectly affecting any Natura 2000 or Ramsar Site
Kinnell	No	No Local Plan allocation or proposal directly or indirectly affecting any Natura 2000 or Ramsar Site
Kirkinch	No	No Local Plan allocation or proposal directly or indirectly affecting any Natura 2000 or Ramsar Site
Kirkton of Auchterhouse	No	No Local Plan allocation or proposal directly or indirectly affecting any Natura 2000 or Ramsar Site
Kirkton of Craig	No	No Local Plan allocation or proposal directly or indirectly affecting any Natura 2000 or Ramsar Site
Kirkton of Glenisla	No	No Local Plan allocation or proposal directly or indirectly affecting any Natura 2000 or Ramsar Site
Kirkton of Kingoldrum	No	No Local Plan allocation or proposal directly or indirectly affecting any Natura 2000 or Ramsar Site
Kirkton of Kinnettles	No	No Local Plan allocation or proposal directly or indirectly affecting any Natura 2000 or Ramsar Site
Kirkton of Menmuir	No	No Local Plan allocation or proposal directly or indirectly affecting any Natura 2000 or Ramsar Site
Kirkton of Tealing	No	No Local Plan allocation or proposal directly or indirectly affecting any Natura 2000 or Ramsar Site
Letham	No	No Local Plan allocation or proposal directly or indirectly affecting any Natura 2000 or Ramsar Site
Letham Grange	No	No Local Plan allocation or proposal directly or indirectly affecting any Natura 2000 or Ramsar Site
Leysmill	No	No Local Plan allocation or proposal directly or indirectly affecting any Natura 2000 or Ramsar Site
Liff	No	No Local Plan allocation or proposal directly or indirectly affecting any Natura 2000 or Ramsar Site
Lunanhead	No	No Local Plan allocation or proposal directly or indirectly affecting any Natura 2000 or Ramsar Site
Lundie	No	No Local Plan allocation or proposal directly or indirectly affecting any Natura 2000 or Ramsar Site
Maryton	No	No Local Plan allocation or proposal directly or indirectly affecting any Natura 2000 or Ramsar Site
Marywell	No	No Local Plan allocation or proposal directly or indirectly affecting any Natura 2000 or Ramsar Site
Memus	No	No Local Plan allocation or proposal directly or indirectly affecting any Natura 2000 or Ramsar Site
Milton of Ogilvie	No	No Local Plan allocation or proposal directly or indirectly affecting any Natura 2000 or Ramsar Site
Monikie	No	No Local Plan allocation or proposal directly or indirectly affecting any Natura 2000 or Ramsar Site
Muirdrum	No	No Local Plan allocation or proposal directly or indirectly affecting any Natura 2000 or Ramsar Site
Murroes	No	No Local Plan allocation or proposal directly or indirectly affecting any Natura 2000 or Ramsar Site
Newbigging (by Carnoustie)	No	No Local Plan allocation or proposal directly or indirectly affecting any Natura 2000 or Ramsar Site
Newbigging (by Tealing)	No	No Local Plan allocation or proposal directly or indirectly affecting any Natura 2000 or Ramsar Site
Newtyle	No	No Local Plan allocation or proposal directly or indirectly affecting any Natura 2000 or Ramsar Site

Settlement	Likely Significant Effect on any Natura 2000 Site - AA required	Reason Why No Likely Significant Effect (LSE)
North Craigo	No	No Local Plan allocation or proposal directly or indirectly affecting any Natura 2000 or Ramsar Site
North Dronley	No	No Local Plan allocation or proposal directly or indirectly affecting any Natura 2000 or Ramsar Site
Oathlaw	No	No Local Plan allocation or proposal directly or indirectly affecting any Natura 2000 or Ramsar Site
Padanaram	No	No Local Plan allocation or proposal directly or indirectly affecting any Natura 2000 or Ramsar Site
Panbride	No	No Local Plan allocation or proposal directly or indirectly affecting any Natura 2000 or Ramsar Site
Piperdam	No	No Local Plan allocation or proposal directly or indirectly affecting any Natura 2000 or Ramsar Site
Prosen Village	No	No Local Plan allocation or proposal directly or indirectly affecting any Natura 2000 or Ramsar Site
Redford	No	No Local Plan allocation or proposal directly or indirectly affecting any Natura 2000 or Ramsar Site
Ruthven	No	No Local Plan allocation or proposal directly or indirectly affecting any Natura 2000 or Ramsar Site
South Kingennie	No	No Local Plan allocation or proposal directly or indirectly affecting any Natura 2000 or Ramsar Site
Strathmartine Hospital	No	No Local Plan allocation or proposal directly or indirectly affecting any Natura 2000 or Ramsar Site
Tannadice	No	No Local Plan allocation or proposal directly or indirectly affecting any Natura 2000 or Ramsar Site
Tarfside	No	No Local Plan allocation or proposal directly or indirectly affecting any Natura 2000 or Ramsar Site
Tigerton	No	No Local Plan allocation or proposal directly or indirectly affecting any Natura 2000 or Ramsar Site
Trinity	No	No Local Plan allocation or proposal directly or indirectly affecting any Natura 2000 or Ramsar Site
Wellbank	No	No Local Plan allocation or proposal directly or indirectly affecting any Natura 2000 or Ramsar Site
Westhall Terrace	No	No Local Plan allocation or proposal directly or indirectly affecting any Natura 2000 or Ramsar Site
Westmuir	No	No Local Plan allocation or proposal directly or indirectly affecting any Natura 2000 or Ramsar Site
Whigstreet	No	No Local Plan allocation or proposal directly or indirectly affecting any Natura 2000 or Ramsar Site
Woodville	No	No Local Plan allocation or proposal directly or indirectly affecting any Natura 2000 or Ramsar Site

4. HOW THE LOCAL PLAN REVIEW MIGHT AFFECT NATURA SITES

The Local Plan Review establishes policies which not only support new development on allocated land/sites within settlements, but also allows in certain circumstances development either on unallocated land/sites within settlements or in countryside locations outwith settlement boundaries. The policies detailed below are criteria based policies for assessing development proposals and do not allocate or identify specific sites, locations or properties. Although the policies in themselves are not considered likely to have a significant effect on any Natura 2000 or Ramsar site they have been included in the assessments of individual sites as they may be used in determining the response to development proposals affecting designated sites.

Sustainable Communities

Housing:

Policy SC2: Small Sites; Policy SC3: Windfall Sites support housing on suitable sites (within settlements). Housing development under these policies can form a significant component of the total new housing development within Angus and through the resultant additional population provides a major component of water supply, drainage and disturbance impacts.

Policy SC9: Affordable Housing seeks the provision for affordable housing on appropriate sites in settlements and establishes criteria to assess proposals for development outwith but adjacent to development boundaries.

Policy SC4: Countryside Housing - Retention of Existing Houses; Policy SC5: Countryside Housing – Conversion of Non-residential Buildings; Policy SC6: Countryside housing – New Houses; Policy SC7: Essential Worker Housing; Policy SC8: New Country Houses; support limited housing development in the countryside through

- Reuse and redevelopment of existing sites and buildings;
- Conversion of non residential buildings for housing;
- Individual new houses and additions to cohesive groups; and
- Provision for essential workers

While the numbers of houses involved is small in comparison to that provided through town and village housing land allocations, the impact on the environment can be more significant than for the comparable scale of development within settlements.

Working

Similarly Policy SC17: Industrial and Business Use establishes criteria for assessing development proposals within settlements but not on allocated sites. Such proposals may result in impact on the environment. Policy SC19: Rural Employment provides opportunity for business in

rural Angus where they make a positive contribution to the rural economy and are of a scale and nature appropriate to the location. Employment development will provide a significant component of water supply, drainage and disturbance impacts.

Other developments

Other potential development, of lesser impact overall, but with the potential for significant individual impacts includes development under the following policies

Policy SC20: Tourism Development;
Policy SC21: Caravan Sites and Holiday Chalets;
Policy SC22: Defence Establishments;
Policy SC27: Local Shops;
Policy SC31: Sports and Recreation Facilities;
Policy SC34: Noisy Sports;
Policy SC35: New Golf Course Development;
Policy SC48: Telecommunications.

Development proposals relating to the above can have significant impacts, particularly where the proposals is seeking to take advantage from a specific location, environment or resource and may be in either a settlement or countryside location.

Environment and Resources

Under the heading of Environment and Resources the Local Plan Review establishes a range of policy on certain types of development, all of which can have significant impacts from the specific form of development, the infrastructure needed to serve it and the additional population generated.

Policy ER8: Commercial Forestry Development;
Policy ER22: Public Drainage systems;
Policy ER23: Private Drainage systems;
Policy ER24: Surface Water Disposal;

Implementation

Policy Imp1: Developer Contributions – deals with the mitigation of impacts that would not have been necessary but for the development.

The Local Plan Review also recognises the important role to be played by:-

- Angus Councils Shoreline Management Plan (approved and published November 2004) in protecting the Angus coastline;
- Local Biodiversity Action Plans for Tayside and the Cairngorms in relation to habitats and species;
- the Tay Estuary Forum in relation to the habitats, species and water resources of the River Tay Estuary;
- emerging River Basin Management Plans in retaining the quality and status of water resources in Angus;

Principal Safeguarding Policy

Where development is proposed that may affect the sensitivities of any designated Natura 2000 or Ramsar site, the proposal will be assessed against the principal safeguarding policy contained in the Finalised Angus Local Plan Review.

Sensitivities	Safeguarding Policy
All sensitivities	<p>The principal safeguarding policy below applies to all development proposals that are within or likely to have a significant effect on designated, candidate or proposed European sites. This policy indicates that:</p> <p>Policy ER1: Natura 2000 and Ramsar Sites Development likely to have a significant effect on a designated, candidate or proposed Natura 2000 site (Special Protection Areas and Special Areas of Conservation), or Ramsar site and not connected with or necessary to the conservation management of the site must undergo an appropriate assessment as required by Regulation 48 of the Conservation (Natural Habitats etc) Regulations 1994. Development will only be permitted exceptionally and where the assessment indicates that</p> <ul style="list-style-type: none"> a) it will not adversely affect the integrity of the site; or b) there are no alternative solutions; and c) there are imperative reasons of overriding public interest, including those of a social or economic nature. <p>Where proposals affect a priority habitat and/or priority species as defined by the Habitats Directive (92/43/EEC), the only overriding public interest must relate to human health, public safety or beneficial consequences of primary importance to the environment. Other allowable exceptions are subject to the views of the European Commission.</p>

Secondary Safeguarding Policies

In addition to the principal safeguarding policy identified above, the following policies from the Finalised ALP Review provide a secondary tier of safeguarding. Although these policies may promote or support appropriate development they also incorporate measures to ensure that protection of environmental resources is addressed. The following table details the individual development policies, the types of development they permit and the safeguards in place to ensure no adverse effect on the integrity of Natura 2000 sites arising from implementation/application of the policies.

Angus Local Plan Review Policy	Comment	Implementation Safeguards
Policy ER29 : Coastal Development	<p>In relation to protection of the landscape character, biodiversity and natural heritage of the Angus coastline, the policy states that:</p> <p>“Development proposals for the undeveloped coast will generally only be considered acceptable where it can be demonstrated that:</p> <ul style="list-style-type: none"> • the social and economic benefits of the proposal outweigh the potential detrimental impact on the Angus coastal environment. <p>In addition, all development proposals affecting either the developed or undeveloped coast will be assessed against the Angus Shoreline Management Plan and other relevant policies of this Local Plan.”</p> <p>The justification for the policy states that “Priority for the undeveloped coastline will be to safeguard and protect the landscape character, biodiversity, natural and cultural heritage from inappropriate development.”</p> <p>Although Natura 2000 sites are not specifically referenced in the policy or supporting text, the policy is clearly intended to protect the coastal environment, including sites recognised as being internationally important, from inappropriate development.</p>	<p>Development which is likely to significantly affect the qualifying interests of a Natura 2000 site will require an appropriate assessment to establish whether the development would adversely affect the site.</p> <p>Proposals where the development will adversely affect the integrity of any Natura 2000 site will not normally be approved.</p>
Policy ER32 : Minerals	Policy ER32 states that proposals for mineral development will only be approved if “b) the development conforms to a sequential consideration of international, national and locally important planning designations established by Policy ER38”	SPA’s, SAC’s and Ramsar sites are included in Level 1: International Designations under Mineral Extraction. Such designated sites are afforded the highest level of protection by this policy approach.
Policy ER39 : Sequential Approach	Policy ER39 states that:	Mineral extraction proposals will only be permitted

<p>for Mineral Extraction, Landfill and Land Raise Proposals</p>	<p>“Proposals for mineral extraction must demonstrate and satisfy a sequential consideration of international, national and locally important designations detailed in Table 3.1. <u>Level 1: International Designations:</u> Development that would have an adverse impact on the conservation interests of international designations will only be permitted where:</p> <ul style="list-style-type: none"> • there are reasons of overriding public interest; and • there is no alternative solution (including the full exploration of alternative sites in levels 2,3 and 4)” 	<p>in these areas where there are reasons of overriding public interest and there are no alternative solutions in lower levels.</p>
<p>Policy ER34 : Renewable Energy Developments</p> <p>Policy ER35 : Wind Energy Development</p>	<p>Policy ER34 states “Proposals for all forms of renewable energy developments will be assessed against the following requirements: (c) the development will have no unacceptable detrimental effect on any sites designated for natural heritage, scientific, historic or archaeological reasons”</p> <p>Policy ER35 states “....Proposals for wind energy developments will require to demonstrate:</p> <ol style="list-style-type: none"> (a) evidence of a local search to ensure the proposed site minimises potential environmental impact and that there is no suitable less sensitive location; (b) compatibility with the requirements of Policy ER34; (c) that no wind turbines will interfere with birds, especially those that have statutory protection and are susceptible to disturbance, displacement or collision” 	<p>Renewable energy development which is likely to significantly affect the qualifying interests of a Natura 2000 site will require an appropriate assessment to establish whether the development would adversely affect the site.</p> <p>Proposals where the development will adversely affect the integrity of any Natura 2000 site will not normally be approved.</p>
<p>Policy ER36: Municipal Solid Waste Management</p> <p>Policy ER37: Non-Municipal Waste Management</p>	<p>Policy ER36 states “Proposals for new or extended landfill sites and/or the development of facilities for the management and disposal of municipal solid wastes will be permitted where it can be demonstrated that:</p> <ul style="list-style-type: none"> • The development conforms to a sequential consideration of international, national and locally important planning designations established by Policy ER39” <p>Policy ER37 states “Proposals for new or extended landfill sites and/or the</p>	<p>SPA's, SAC's and Ramsar sites are included in Level 1: International Designations under Landfill and Land Raise. Such designated sites are afforded the highest level of protection by this policy approach.</p> <p>Landfill and land raise proposals will only be permitted in these areas where there are reasons of overriding public interest and there are no alternative solutions in lower levels.</p>

<p>Policy ER39 : Sequential Approach for Mineral Extraction, Landfill and Land Raise Proposals</p>	<p>development of facilities for the management and disposal of non-municipal wastes will be permitted where it can be demonstrated that:</p> <ul style="list-style-type: none"> • The development conforms to a sequential consideration of international, national and locally important planning designations established by Policy ER39” <p>Policy ER39 states that: “Proposals for landfill and land raise development must demonstrate and satisfy a sequential consideration of international, national and locally important designations detailed in Table 3.1. <u>Level 1: International Designations:</u> Development that would have an adverse impact on the conservation interests of international designations will only be permitted where:</p> <ul style="list-style-type: none"> • there are reasons of overriding public interest; and there is no alternative solution (including the full exploration of alternative sites in levels 2,3 and 4)” 	
--	--	--

Mitigation

There are various mitigation measures that can be used to reduce the potential impacts of proposals on the qualifying interests of any Natura 2000 or Ramsar site. This can extend to the use of planning conditions to control the timing of works to minimise the level of disturbance to qualifying species and habitats. Where considered appropriate, developers may be required to prepare a construction method statement in support of their proposal.

5. APPROPRIATE ASSESSMENT OF LOCAL PLAN REVIEW

Article 6 of the Directive requires Angus Council to assess whether the Local Plan Review will ‘*adversely affect the integrity of the site concerned*’ and ‘*to avoid the deterioration of natural habitats and the habitats of species as well as disturbance of the species for which the areas have been designated*’.

Natura 2000 and Ramsar sites in the Angus Local Plan Review area include particularly important habitats for wintering and breeding birds and selected fresh water species. Also recognised are important sand dunes, grasses and heathland habitats. This assessment has therefore focused on the potential for development to result in direct and indirect impact on the qualifying interests of any individual site. The following factors were taken into account in the assessment – new built development, habitat protection, water quality, flooding, coastal development, renewable energy, minerals, landfill and land raise.

Table 5.1 (page 54) sets out the summary position of the assessment of the impact of the Finalised Local Plan Review on individual European designated sites. The detailed working behind the assessment for each site is set out in Section 5 and in Appendix 2 (a – f). In summary the following conclusions are reached:

- All designated, candidate and proposed Natura 2000 and Ramsar sites are protected by the specific Local Plan Policy ER1 : Natura 2000 and Ramsar Sites, which is consistent with National and European legislation;
- No land is allocated for development within any Natura 2000 and Ramsar site in Angus and consequently no site is directly affected by Local Plan land allocations;
- Policy B13 : Brechin Flood Prevention Scheme has been identified as having a likely significant effect on the natural habitats and the habitats of species, as well as disturbance of species for which the River South Esk SAC has been designated. This policy has been identified as requiring further assessment on its potential effect on the River South Esk SAC. Details of this second stage of assessment are set out on pages 40 - 42;
- A range of Local Plan policies are in place giving priority to conservation of habitats, species and designated sites and provide the basis for assessing possible impact of development proposals. The Primary and Secondary safeguarding policies are detailed on pages 31-34.

Assessment of Possible Impact of Local Plan Policies, Proposals and Settlements on Natura 2000 Sites

Special Areas of Conservation

Barry Links SAC Conservation Objectives

To avoid deterioration of the qualifying habitats thus ensuring that the integrity of the site is maintained and the site makes an appropriate contribution to achieving favourable conservation status for each of the qualifying features.

To ensure for the qualifying habitats that the following are maintained in the long term:

- Extent of the habitat on site
- Distribution of the habitat within site
- Structure and function of the habitat
- Processes supporting the habitat
- Distribution of typical species of the habitat
- Viability of typical species as components of the habitat
- No significant disturbance of typical species of the habitat

Settlement/Policy	Qualifying Interests	Sensitivities	Site Assessment	Safeguarding	Mitigation	Qualifying Interest Conclusion
No Local Plan allocation or proposal directly or indirectly affecting the Barry Links SAC. SC4 - SC9, SC17 - SC19, SC27, SC31, SC34 – 35, ER8, ER22 - 24, ER31, ER33 - 36.	Coastal dune heathland. Dune grassland. Humid dune slacks. Shifting dunes. Shifting dunes with marram.	Wind turbines on flight paths; Loss of nesting sites & disturbance during construction of coastal defences; Water quality changes Disturbance during construction Direct disturbance Habitat destruction or disturbance from mineral extraction or	Parts of the area continue to be used by MoD as military training ground. No development is envisaged other than where related to defence function. Policy SC16 : Defence Establishments reserves Buddon Camp for military use with opportunity for other uses to be assessed in the context of Dundee and Angus Structure	Safeguarding against the effects highlighted above is provided by Policy ER1: Natura 2000 and Ramsar Sites. All development proposals, whether on allocated sites or not, considered likely to have significant effects on the conservation interests of Barry Links will require appropriate assessment to	Development proposals likely to have a significant effect on the qualifying interests of the Barry Links SAC site will require appropriate assessment to establish whether the proposal would significantly affect the qualifying interests. Developments where it cannot be shown that they will not	The Plan will not adversely affect the qualifying interests with appropriate mitigation and safeguarding.

		<p>coastal protection/engineering works. Increased sedimentation</p>	<p>Plan and Local Plan policies.</p> <p>There are no allocations of development land contained in the Finalised Local Plan which will affect the qualifying interests of Barry Links SAC.</p>	<p>establish whether the development will adversely affect the site.</p> <p>Proposals where the development will adversely affect the integrity of the Barry Links will not normally be approved.</p>	<p>adversely affect the qualifying interests will be refused.</p>	
--	--	--	---	---	---	--

**Firth of Tay and Eden Estuary SAC (including part of Barry Links SSSI)
Conservation Objectives**

To avoid deterioration of the habitats of the qualifying species or significant disturbance to the qualifying species, thus ensuring that the integrity of the site is maintained and the site makes an appropriate contribution to achieving favourable conservation status for each of the qualifying features.

To ensure for the qualifying species that the following are maintained in the long term:

- Population of the species as a viable component of the site
- Distribution of the species within site
- Distribution and extent of habitats supporting the species
- Structure, function and supporting processes of habitats supporting the species
- No significant disturbance of the species

To avoid deterioration of the qualifying habitats thus ensuring that the integrity of the site is maintained and the site makes an appropriate contribution to achieving favourable conservation status for each of the qualifying features.

To ensure for the qualifying habitats that the following are maintained in the long term:

- Extent of the habitat on site
- Distribution of the habitat within site
- Structure and function of the habitat
- Processes supporting the habitat
- Distribution of typical species of the habitat
- Viability of typical species as components of the habitat
- No significant disturbance of typical species of the habitat

Settlement/Policy	Qualifying Interests	Sensitivities	Site Assessment	Safeguarding	Mitigation	Qualifying Interest Conclusion
No Local Plan land allocation or proposal directly or indirectly affecting the Firth of Tay & Eden Estuary SAC. SC2 – SC9, SC13, SC17, SC19 – SC22, SC27, SC31, SC34 – 35, SC48,	Estuaries Intertidal mudflats and sandflats not covered by seawater at low tide. Subtidal sandbanks which are slightly covered by sea water all the time Harbour seal	Wind turbines on flight paths; Loss of nesting sites & disturbance during construction of coastal defences; Water quality changes Disturbance during	The Plan may affect the Firth of Tay & Eden Estuary by development of both housing land allocations in Monifieth and other settlements where surface water drainage feeds into the Tay Estuary and	Safeguarding against the effects highlighted above is provided by Policy ER1: Natura 2000 and Ramsar Sites. All development proposals, whether on allocated sites or not, considered likely	Development proposals likely to have a significant effect on the qualifying interests of the Firth of Tay & Eden Estuary SAC will require appropriate assessment to establish whether the	The Plan will not adversely affect the qualifying interests with appropriate mitigation and safeguarding.

ER8, ER22 - 24		<p>construction</p> <p>Direct disturbance</p> <p>Habitat destruction or disturbance from mineral extraction or coastal protection/engineering works</p> <p>Increased sedimentation</p>	<p>its feeder watercourses.</p> <p>Similarly, the Firth of Tay & Eden Estuary and the water courses feeding it may be affected by surface water and septic tank discharge from development in the countryside permissible under the Plans policies.</p> <p>All surface water, septic tank and foul water drainage discharging to a watercourse, water body or ground water is subject to specific controls by SEPA.</p> <p>There is also concern that proposals for mineral extraction and landfill within the catchment area for the Tay Estuary could affect the sites water quality and through sedimentation.</p>	<p>to have significant effects on the conservation interests of the Firth of Tay & Eden Estuary will require appropriate assessment to establish whether the development will adversely affect the site.</p> <p>Proposals where the development will adversely affect the integrity of the Firth of Tay & Eden Estuary will not normally be approved.</p>	<p>proposal would significantly affect the qualifying interests.</p> <p>Developments where it cannot be shown that they will not adversely affect the qualifying interests will be refused.</p>	
----------------	--	--	---	---	---	--

River South Esk SAC (linear)

Conservation Objectives

To avoid deterioration of the habitats of the qualifying species or significant disturbance to the qualifying species, thus ensuring that the integrity of the site is maintained and the site makes an appropriate contribution to achieving FCS for each of the qualifying features.

To ensure for the qualifying species that the following are maintained in the long term:

- Viability of typical species as components of the habitats
- No significant disturbance of typical species of the habitats
- Distribution and extent of habitats supporting the species
- Population of the species as a viable component of the site
- Distribution of the species within site
- Structure, function and supporting processes of habitats supporting the species

Policy Requiring Further Assessment:

Policy	Further Assessment required? Y/N	Reason and possible safeguarding
B13 : Brechin Flood Prevention Scheme	Y	Adverse effects due to the construction and implementation of the proposed flood prevention scheme, in particular, effects from increased sedimentation, changes to river morphology from altered flow rates, changes to suitable spawning and juvenile habitat and any prevention of upstream migration.

Settlement/Policy	Qualifying Interests	Sensitivities	Site Assessment	Safeguarding	Mitigation	Qualifying Interest Conclusion
<p>Bridge of Dun, Cortachy, Dykehead, Farnell, Finavon, Prosen Village, Tannadice.</p> <p>No Local Plan allocation or proposal directly or indirectly affecting the River South Esk SAC.</p> <p>SC2 – SC9, SC13, SC17, SC19 – SC22, SC27, SC31, SC34 – 35, SC48, ER8,</p>	<p>Fresh water pearl mussel*</p> <p>Atlantic salmon*</p> <p>* denotes priority species</p>	<p>Disturbance during construction</p> <p>Direct disturbance</p> <p>Water quality changes;</p> <p>Increased sedimentation</p> <p>Habitat disturbance or destruction through river engineering works or mineral extraction</p>	<p>The Plan may affect the River South Esk by development of both housing and employment land allocations in Brechin and other settlements where surface water drainage feeds into the River South Esk and its feeder watercourses.</p> <p>Similarly, the River South Esk and the</p>	<p>Safeguarding against the effects highlighted above is provided by Policy ER1: Natura 2000 and Ramsar Sites.</p> <p>All development proposals, whether on allocated sites or not, considered likely to have significant effects on the conservation interests of the River South Esk will</p>	<p>Development proposals likely to have a significant effect on the qualifying interests of the River South Esk SAC will require appropriate assessment to establish whether the proposal would significantly affect the qualifying interests.</p> <p>Developments</p>	<p>The Plan will not adversely affect the qualifying interests with appropriate mitigation and safeguarding.</p>

ER22 - 24			<p>water courses feeding it may be affected by surface water and septic tank discharge from development in the countryside permissible under the Plans policies.</p> <p>All surface water, septic tank and foul water drainage discharging to a watercourse, water body or ground water is subject to specific controls by SEPA.</p> <p>There is also concern that proposals for mineral extraction and landfill within the catchment area for the River South Esk could affect the sites water quality and through sedimentation.</p>	<p>require appropriate assessment to establish whether the development will adversely affect the site.</p> <p>Proposals where the development will adversely affect the integrity of the River South Esk will not normally be approved.</p>	<p>where it cannot be shown that they will not adversely affect the qualifying interests will be refused.</p>	
<p><u>Brechin</u> Policy B13 : Brechin Flood Prevention Scheme</p>			<p>Policy B13 : Brechin Flood Prevention Scheme deals with intention to construct a flood prevention scheme along River Street, Brechin. This project will be subject to a separate Environmental Impact Assessment. SNH, one of main</p>		<p>Work in support of the EIA has proposed the preferred option to provide defences along the north bank of the River South Esk in Brechin town itself, and not to alter the downstream gravel bank. For the preferred option, it is</p>	

			<p>consultees, have been involved at all stages and have indicated no objection in principle to the preferred option.</p>		<p>feasible for flood bank work to be designed in such a way to avoid pollution during the construction phase.</p> <p>Detailed proposals will need to demonstrate how they will maintain satisfactory water quality and quantity and natural river processes sufficient to meet the conservation objectives from commencement of work through to operation of the proposed flood prevention scheme. Detailed method statements will be required prior to consent.</p>	
--	--	--	---	--	---	--

River Tay and its Tributaries SAC (linear)

Conservation Objectives

To ensure for the qualifying habitats that the following are maintained in the long term:

- Extent of the habitat on site
- Distribution of the habitat within site
- Structure and function of the habitat
- Processes supporting the habitat
- Distribution of typical species of the habitat
- Viability of typical species as components of the habitat
- No significant disturbance of typical species of the habitat

To avoid deterioration of the habitats of the qualifying species (**listed in table below**) or significant disturbance to the qualifying species, thus ensuring that the integrity of the site is maintained and the site makes an appropriate contribution to achieving FCS for each of the qualifying features.

To ensure for the qualifying species that the following are maintained in the long term:

- Population of the species as a viable component of the site
- Distribution of the species within site
- Distribution and extent of habitats supporting the species
- Structure, function and supporting processes of habitats supporting the species
- No significant disturbance of the species

Settlement/Policy	Qualifying Interests	Sensitivities	Site Assessment	Safeguarding	Mitigation	Qualifying Interest Conclusion
Douglstown, Folda, Kirkton of Glenisla, Kirkton of Kinnettles, Ruthven. No Local Plan land allocation or proposal directly or indirectly affecting the River Tay and its Tributaries SAC. SC2 – SC9, SC13,	Oligotrophic to mesotrophic standing waters with vegetation of the Littorelletea uniflorae and/or of the Isoëto-Nanojuncetea Atlantic salmon* Otter* Sea lamprey* River lamprey* Brook Lamprey *	Water quality changes; Increased sedimentation Habitat disturbance or destruction through river engineering works or mineral extraction	Although no development land is allocated in settlements adjacent to the River Tay and its Tributaries SAC, it may be affected by development in settlements permissible under the Plan policies where surface water drainage feeds into	Safeguarding against the potential effects highlighted is provided by Policy ER1: Natura 2000 and Ramsar Sites. All development proposals, whether on allocated sites or not, considered likely to have significant affects on the	Development proposals likely to have a significant effect on the qualifying interests of the River Tay and its Tributaries SAC site will require appropriate assessment to establish whether the proposal would significantly affect	The Plan will not adversely affect the qualifying interests with appropriate mitigation and safeguarding.

<p>SC17, SC19 – SC22, SC27, SC31, SC34 – 35, SC48, ER8, ER22 - 24</p>	<p>(* denotes priority species)</p>		<p>the River Tay and its feeder watercourses.</p> <p>Similarly, the River Tay and the water courses feeding it may be affected by surface water and septic tank discharge from development in the countryside permissible under the Plans policies.</p> <p>There is also concern that proposals for mineral extraction and landfill within the catchment area for the River Tay could affect the sites water quality and through sedimentation.</p>	<p>conservation interests of the River Tay and its Tributaries SAC will require appropriate assessment to establish whether the development will adversely affect the site.</p> <p>Proposals where the development will adversely affect the integrity of the River Tay and its feeder watercourses will not normally be approved.</p>	<p>the qualifying interests.</p> <p>Developments where it cannot be shown that they will not adversely affect the qualifying interests will be refused.</p>	
---	-------------------------------------	--	---	--	---	--

Special Protection Areas

Firth of Tay and Eden Estuary SPA/Ramsar (including part of Barry Links SSSI)

Conservation Objectives

To avoid deterioration of the habitats of the qualifying species or significant disturbance to the qualifying species, thus ensuring that the integrity of the site is maintained and the site makes an appropriate contribution to achieving favourable conservation status for each of the qualifying features.

To ensure for the qualifying species that the following are maintained in the long term:

- Population of the species as a viable component of the site
- Distribution of the species within site
- Distribution and extent of habitats supporting the species
- Structure, function and supporting processes of habitats supporting the species
- No significant disturbance of the species

Settlement/Policy	Qualifying Interests	Sensitivities	Site Assessment	Safeguarding	Mitigation	Qualifying Interest Conclusion
<p>Monifieth</p> <p>No Local Plan land allocation or proposal directly or indirectly affecting Firth of Tay and Eden SPA and Ramsar site.</p> <p>SC2 – SC9, SC13, SC17, SC19 – SC22, SC27, SC31, SC34 – 35, SC48, ER8, ER22 - 24</p>	<p>Bar-tailed godwit Black-tailed godwit Common scoter Cormorant Dunlin Eider Goldeneye Gooseander Grey plover Greylag goose Little tern Long-tailed duck Marsh harrier Oystercatcher Pink-footed goose Red-breasted merganser Redshank Sanderling Shelduck Velvet scoter Waterfowl assemblage</p>	<p>Wind turbines on flight paths;</p> <p>Loss of nesting sites & disturbance during construction of coastal defences;</p> <p>Water quality changes</p> <p>Disturbance during construction</p> <p>Direct disturbance</p> <p>Habitat destruction or disturbance from mineral extraction or coastal protection/engineering works</p> <p>Increased</p>	<p>The Plan may affect the Firth of Tay and Eden Estuary SPA by development of both housing land allocations in Monifieth and other settlements where surface water drainage feeds into the Tay Estuary and its feeder watercourses.</p> <p>Similarly, the Tay Estuary and the water courses feeding it may be affected by surface water and septic tank discharge from development in the countryside</p>	<p>Safeguarding against the effects highlighted above is provided by Policy ER1: Natura 2000 and Ramsar Sites.</p> <p>All development proposals, whether on allocated sites or not, considered likely to have significant effects on the conservation interests of the Firth of Tay and Eden Estuary SPA and Ramsar site will require appropriate assessment to establish whether the proposal would significantly affect the qualifying interests.</p> <p>Developments where it cannot be shown that they will not adversely affect the qualifying interests will be refused.</p>	<p>The Plan will not adversely affect the qualifying interests with appropriate mitigation and safeguarding.</p>	

		sedimentation	<p>permissible under the Plans policies.</p> <p>All surface water, septic tank and foul water drainage discharging to a watercourse, water body or ground water is subject to specific controls by SEPA.</p> <p>There is also concern that proposals for mineral extraction and landfill within the catchment area for the Firth of Tay and Eden Estuary SPA could affect the sites water quality and through sedimentation.</p>	<p>site.</p> <p>Proposals where the development will adversely affect the integrity of the Firth of Tay and Eden Estuary SPA will not normally be approved.</p>		
--	--	---------------	--	---	--	--

Loch of Kinnordy SPA/Ramsar Conservation Objectives

To avoid deterioration of the habitats of the qualifying species (listed below) or significant disturbance to the qualifying species, thus ensuring that the integrity of the site is maintained; and

To ensure for the qualifying species that the following are maintained in the long term:

- Population of the species as a viable component of the site
- Distribution of the species within the site
- Distribution and extent of habitats supporting the species
- Structure, function and supporting processes of habitats supporting the species
- No Significant disturbance of the species

Settlement/Policy	Qualifying Interests	Sensitivities	Site Assessment	Safeguarding	Mitigation	Qualifying Interest Conclusion
<p>No Local Plan allocation or proposal directly or indirectly affecting Loch of Kinnordy SPA and Ramsar Site.</p> <p>SC2 – SC9, SC13, SC17, SC19 – SC22, SC27, SC31, SC34 – 35, SC48, ER8, ER22 - 24</p>	<p>Greylag goose Pink-footed goose</p>	<p>Disturbance during construction</p> <p>Direct disturbance</p> <p>Water quality changes;</p> <p>Increased sedimentation</p> <p>Habitat disturbance or destruction through river engineering works or mineral extraction</p>	<p>The Plan may affect the Loch of Kinnordy SPA by development where surface water drainage feeds into the Loch and its feeder watercourses.</p> <p>Similarly, the Loch of Kinnordy and the water courses feeding it may be affected by surface water and septic tank discharge from development in the countryside permissible under the Plans policies.</p> <p>All surface water, septic tank and foul water drainage discharging to a watercourse, water body or ground water is subject to specific controls by SEPA.</p>	<p>Safeguarding against the effects highlighted above is provided by Policy ER1: Natura 2000 and Ramsar Sites.</p> <p>All development proposals, whether on allocated sites or not, considered likely to have significant effects on the conservation interests of the Loch of Kinnordy SPA will require appropriate assessment to establish whether the development will adversely affect the site.</p> <p>Proposals where the development will adversely affect the integrity of the Loch of Kinnordy will not</p>	<p>Development proposals likely to have a significant effect on the qualifying interests of the Loch of Kinnordy SPA will require appropriate assessment to establish whether the proposal would significantly affect the qualifying interests.</p> <p>Developments where it cannot be shown that they will not adversely affect the qualifying interests will be refused.</p>	<p>The Plan will not adversely affect the qualifying interests with appropriate mitigation and safeguarding.</p>

			<p>There is also concern that proposals for mineral extraction and landfill within the catchment area for the Loch of Kinnordy could affect the sites water quality and through sedimentation.</p> <p>There are no allocations of development land contained in the Finalised Local Plan which will affect the qualifying conservation interests of the Loch of Kinnordy SPA.</p>	normally be approved.		
--	--	--	---	-----------------------	--	--

**Loch of Lintrathen SPA/Ramsar
Conservation Objectives**

To avoid deterioration of the habitats of the qualifying species (listed below) or significant disturbance to the qualifying species, thus ensuring that the integrity of the site is maintained; and

To ensure for the qualifying species that the following are maintained in the long term:

- Population of the species as a viable component of the site
- Distribution of the species within the site
- Distribution and extent of habitats supporting the species
- Structure, function and supporting processes of habitats supporting the species
- No Significant disturbance of the species

Settlement/Policy	Qualifying Interests	Sensitivities	Site Assessment	Safeguarding	Mitigation	Qualifying Interest Conclusion
<p>Bridgend of Lintrathen</p> <p>No Local Plan allocation or proposal directly or indirectly affecting the Loch of Lintrathen SPA and Ramsar site.</p> <p>SC2 – SC9, SC13, SC17, SC19 – SC22, SC27, SC31, SC34 – 35, SC48, ER8, ER22 - 24</p>	<p>Greylag goose</p>	<p>Disturbance during construction</p> <p>Direct disturbance</p> <p>Water quality changes;</p> <p>Increased sedimentation</p> <p>Habitat disturbance or destruction through river engineering works or mineral extraction</p>	<p>The Plan may affect the Loch of Lintrathen SPA by development where surface water drainage feeds into the Loch and its feeder watercourses.</p> <p>Similarly, the Loch of Lintrathen SPA and the water courses feeding it may be affected by surface water and septic tank discharge from development in the countryside permissible under the Plans policies.</p> <p>All surface water, septic tank and foul water drainage discharging to a watercourse, water body or ground water is subject to specific</p>	<p>Safeguarding against the effects highlighted above is provided by Policy ER1: Natura 2000 and Ramsar Sites.</p> <p>All development proposals, whether on allocated sites or not, considered likely to have significant effects on the conservation interests of the Loch of Lintrathen SPA and Ramsar site will require appropriate assessment to establish whether the development will adversely affect the site.</p> <p>Proposals where the development will adversely affect the integrity of the Loch</p>	<p>Development proposals likely to have a significant effect on the qualifying interests of the Loch of Lintrathen SPA and Ramsar site will require appropriate assessment to establish whether the proposal would significantly affect the qualifying interests.</p> <p>Developments where it cannot be shown that they will not adversely affect the qualifying interests will be refused.</p>	<p>The Plan will not adversely affect the qualifying interests with appropriate mitigation and safeguarding.</p>

			<p>controls by SEPA.</p> <p>There is also concern that proposals for mineral extraction and landfill within the catchment area for the Loch of Lintrathen SPA could affect the sites water quality and through sedimentation.</p> <p>There are no allocations of development land contained in the Finalised Local Plan which will affect the qualifying conservation interests of the Loch of Lintrathen SPA.</p>	<p>of Lintrathen SPA will not normally be approved.</p>		
--	--	--	--	---	--	--

Montrose Basin SPA/Ramsar (including Duns Dish SSSI)

Conservation Objectives

To avoid deterioration of the habitats of qualifying species (listed below), or significant disturbance to the qualifying species, thus ensuring that the integrity of the site is maintained; and

To ensure for the qualifying species that the following are maintained in the long term:

- Population of the species as a viable component of the site
- Distribution of the species within site
- Distribution and extent of habitats supporting the species
- Structure, function and supporting processes of habitats supporting the species
- No significant disturbance of the species

Settlement/Policy	Qualifying Interests	Sensitivities	Site Assessment	Safeguarding	Mitigation	Qualifying Interest Conclusion
<p>Montrose, Barnhead, Bridge of Dun</p> <p>No Local Plan allocation or proposal directly or indirectly affecting the Montrose Basin SPA and Ramsar site.</p> <p>SC2 – SC9, SC13, SC17, SC19 – SC22, SC27, SC31, SC34 – 35, SC48, ER8, ER22 - 24</p>	<p>Special Protection Area</p> <p>Greylag goose Knot Redshank Shelduck Wigeon Eider Oystercatcher Dunlin Waterfowl assemblage</p> <p>Ramsar Site:</p> <p>1b - Good representative example of a (near) natural wetland, common to more one region. 1d - Example of a specific type of wetland which is rare or unusual in the biogeographic region. 3a - Regularly</p>	<p>Disturbance during construction</p> <p>Wind turbines on flight paths;</p> <p>Water quality changes;</p> <p>Loss of nesting sites & disturbance</p>	<p>The Plan may affect the Montrose Basin SPA by development of both housing and employment land allocations in Montrose through surface water drainage to the Basin or its feeder watercourses and through development of allocated land elsewhere where surface water drainage feeds into the Montrose Basin SPA and its feeder watercourses.</p> <p>Similarly Montrose Basin and the water courses feeding it may be affected by surface water and septic tank discharge from development in</p>	<p>Safeguarding against the effects highlighted above is provided by Policy ER1: Natura 2000 and Ramsar Sites.</p> <p>All development proposals, whether on allocated sites or not, considered likely to have significant effects on the conservation interests of Montrose Basin SPA will require appropriate assessment to establish whether the development will adversely affect the site.</p> <p>Proposals where the development will adversely affect the integrity of the</p>	<p>Development proposals likely to have a significant effect on the qualifying interests of the Montrose Basin SPA will require appropriate assessment to establish whether the proposal would significantly affect the qualifying interests.</p> <p>Developments where it cannot be shown that they will not adversely affect the qualifying interests will be refused.</p>	<p>The Plan will not adversely affect the qualifying interests with appropriate mitigation and safeguarding.</p>

	<p>supports at least 20,000 waterfowl. 3c - Regularly supports at least 1% of all the individuals in a waterfowl population.</p>		<p>the countryside permissible under the Plans policies.</p> <p>All surface water, septic tank and foul water drainage discharging to a watercourse, water body or ground water is subject to specific controls by SEPA.</p> <p>There is also concern that proposals for mineral extraction and landfill within the catchment area for Montrose Basin could affect the sites water quality and through sedimentation.</p>	<p>Montrose Basin SPA will not normally be approved.</p>		
--	--	--	---	--	--	--

6. CONCLUSION

Angus Council attaches considerable importance to consideration of the environmental impacts of development proposals and the promotion of sustainable development through its land use planning process.

During the preparation and development of the Angus Local Plan Review, Angus Council has consulted widely with statutory bodies, interest groups and agencies, and the general public. In addition the Council commissioned a Sustainability Appraisal of the Consultative Draft Local Plan. There were no objections to the policies and proposals of the Local Plan Review by Scottish Natural Heritage, other consultees or members of the general public in relation to the Plans impact on Natura 2000 and Ramsar sites.

In assessing the potential impact of the Local Plan on European Designated Sites, Angus Council has followed steps 1 – 6 of the Checklist detailed in Appendix 1. Having assessed the potential impact of the Local Plan Review on Natura 2000 and Ramsar sites in the context of the principal and secondary safeguarding policies and specific development policies, Angus Council is satisfied that, with the exception of Policy B13 : Brechin Flood Prevention Scheme, the adoption and implementation of the Angus Local Plan Review will not adversely affect the integrity of any of the European designated sites within Angus.

Policy B13 : Brechin Flood prevention Scheme has been identified as having a likely significant effect on the natural habitats and the habitats of species, as well as disturbance of species for which the River South Esk SAC has been designated. This policy has been identified as requiring further assessment on its potential effect on the River South Esk SAC. The second stage of assessment detailed in steps 8 – 12 of the Checklist concluded that detailed proposals for the flood prevention scheme will need to demonstrate how they will maintain satisfactory water quality and quantity and natural river processes sufficient to meet the conservation objectives from commencement of work through to operation of the proposed flood prevention scheme. Detailed method statements will be required prior to consent. The overall conclusion for the River South Esk SAC was that with appropriate safeguarding and mitigation the Plan will not adversely affect the qualifying interests.

The assessment was conducted at a level appropriate to this Local Plan. In line with Angus Local Plan Review Policy ER1 : Natura 2000 and Ramsar Sites a more detailed assessment will be required for any location specific development proposal that the Council consider may have a significant impact on any designated Natura 2000 or Ramsar site. Development proposals affecting such sites will only be supported where, following further assessment, they conform to the policy provisions of the Angus Local Plan Review.

Checklist: Assessing Development Plans for Appropriate Assessment

Screening Phase (combined with SEA)

- Step 1** Identify the geographical scope of the plan.
- Step 2** Identify all European sites that may be affected. This may require consideration of sites outside the boundaries of the plan area and should include both maritime and terrestrial sites. If there is any doubt as to whether any European site may be affected, a precautionary approach should be adopted and the site should be included in the assessment. SNH can advise.
- Step 3** Consider the qualifying interests and conservation objectives of each European site which may be affected, in the context of the plan's aims and objectives. Remember that the area affected may extend beyond the boundaries of the plan area. SNH can advise.
- Step 4** Consider the intentions of the aims, objectives, proposals and policies within the plan, and the anticipated changes to the interests of any of the sites that its implementation may cause or contribute to. Estimate the likely magnitude, duration, location and extent of the effects of these changes as far as they may reasonably be predicted at this stage. Remember that the area affected may extend beyond the boundaries of the plan area.
- Step 5** Determine which, if any, elements of the plan would be likely to have a significant effect on any interest/feature of any European site, alone or in combination with other projects and plans, directly or indirectly. The European site or sites that could be affected, should be explicitly cited in the tests. This appraisal can be applied as a signposted or ring-fenced part of the normal SEA process or in a separate procedure.
- Step 6** If the planning authority determines that the plan will not be likely to have a significant effect on any European site it may proceed to adoption or, in the case of structure plans, to submission for Scottish Ministers' approval without requirement for appropriate assessment. A record should be kept of the appraisal and the reasoning behind this conclusion, ensuring that the terminology of the Habitats Directive is used.
- Step 7** For each likely significant effect, consider (in consultation with SNH and any other relevant body as appropriate) whether any option or alternative approach in the plan, including those that may have previously been rejected, could avoid such an effect on the international site, and still achieve the plan's aims and objectives. If such modifications remove the likelihood of a significant effect on any European site, the plan may proceed to adoption or submission for Scottish Ministers' approval. A record should be kept of the modifications made, their appraisal and the reasoning behind such a conclusion.

Appropriate Assessment Phase (specific to AA)

- Step 8** Where a significant effect on a European site remains likely, an appropriate assessment is required. Agree the methods and scope of the appropriate assessment with SNH and other relevant stakeholders (e.g. SEPA; FCS).
- Step 9** For each likely significant effect, alone or in combination, undertake an appropriate assessment of the implications for the site in light of its conservation objectives, using the best information, science and technical know-how available (regulation 48(1)). The Planning authority should acquire any further information, reasonably obtainable at this stage, to inform the assessment (regulation 48(2)). The assessment should be as full as practicable, being proportional to the level in the hierarchy and detail of the plan.
- Step 10** Having formally consulted SNH (regulation 48(3)) and other stakeholders that may have information or expertise to assist the appropriate assessment (regulation 48(4)), the Planning Authority should identify any impacts on European sites, actions which might avoid or mitigate these, or restrictions which would allow them to be undertaken. The Planning Authority should ascertain that the plan would not adversely affect the integrity of any international site (regulation 48(5)). In doing so it should have regard to the manner in which it is proposed it will be carried out, and consider any restrictions or modifications to which the plan may be subjected, in order to achieve this (regulation 48(6)).
- Step 11** If it *can* be ascertained that the plan will not adversely affect the integrity of any European site either with or without any restrictions or modifications which address any of the potential effects identified, it may proceed to adoption. In approving a higher level plan which will be subject to further elaboration at a more detailed level, it is important that conditions or restrictions on approval of the higher level plan ensure that further assessment will be required to ascertain that the integrity of any European site will not be adversely affected. It should be made explicit in the plan that any subsequent plan or project will only be compliant with the earlier plan in such circumstances.
- Step 12** If it *cannot* be ascertained that a plan will *not* adversely affect the integrity of a European site, the planning authority can only proceed with it if it is agreed that it meets the necessary tests for imperative reasons of overriding public interest, there being no alternatives and subject to appropriate compensatory measures (regulation 49). This has to be agreed by Scottish Ministers. It may also require consultation with the European Commission.

**ANGUS LOCAL PLAN REVIEW:
ASSESSMENT OF NATURA 2000 AND Ramsar SITES AGAINST KEY LOCAL PLAN ENVIRONMENTAL POLICIES**

APPENDIX 2a – SUMMARY

Site Name & Status	Status and Qualifying Interest	Specific protection policy	Habitat protection	Water quality/pollution	Flooding	Coastal development	Renewable energy	Minerals, landfill & land raise	Other built development in the countryside **
Barry Links SAC	Coastal dune heathland, dune grassland, humid dune slacks, shifting dunes and shifting dunes with marram	Policy ER1 Natura 2000 & Ramsar sites	Policy ER4 Wider Heritage and Biodiversity	Policy ER22, 23, 24, & 25 Foul & surface water controls		Policy ER29 Coastal Development	Policy ER34 Renewable Energy Developments and ER35 Wind Energy Development	ER39 Sequential Approach for Mineral Extraction, Landfill and Land Raise Proposals	** See separate list below
Firth of Tay & Eden Estuary SAC	Estuaries, intertidal mudflats and sandflats, subtidal sandbanks and common seal.	Policy ER1 Natura 2000 & Ramsar sites	Policy ER4 Wider Heritage and Biodiversity	Policy ER22, 23, 24, & 25 Foul & surface water controls		Policy ER29 Coastal Development	Policy ER34 Renewable Energy Developments and ER35 Wind Energy Development	ER39 Sequential Approach for Mineral Extraction, Landfill and Land Raise Proposals	** See separate list below
River South Esk (linear) SAC	Atlantic salmon and freshwater pearl mussel	Policy ER1 Natura 2000 & Ramsar sites	Policy ER4 Wider Heritage and Biodiversity	Policy ER22, 23, 24, & 25 Foul & surface water controls	Policy ER27 & 28 Flood Risk			ER39 Sequential Approach for Mineral Extraction, Landfill and Land Raise Proposals	** See separate list below
River Tay & Tributaries (linear) SAC	Clear-water lakes or lochs. Atlantic salmon, brook lamprey, otter, river lamprey and sea lamprey	Policy ER1 Natura 2000 & Ramsar sites	Policy ER4 Wider Heritage and Biodiversity	Policy ER22, 23, 24, & 25 Foul & surface water controls	Policy ER27 & 28 Flood Risk			ER39 Sequential Approach for Mineral Extraction, Landfill and Land Raise Proposals	** See separate list below

Firth of Tay & Eden Estuary SPA / Ramsar (including part of Barry Links SSSI)	Wintering and breeding birds	Policy ER1 Natura 2000 & Ramsar sites	Policy ER4 Wider Heritage and Biodiversity	Policy ER22, 23, 24, & 25 Foul & surface water controls	Policy ER27 & 28 Flood Risk	Policy ER29 Coastal Development	Policy ER34 Renewable Energy Development and ER35 Wind Energy Development	ER39 Sequential Approach for Mineral Extraction, Landfill and Land Raise Proposals	** See separate list below
Loch of Kinnordy SPA / Ramsar	Wintering birds	Policy ER1 Natura 2000 & Ramsar sites	Policy ER4 Wider Heritage and Biodiversity	Policy ER22, 23, 24, & 25 Foul & surface water controls	Policy ER27 & 28 Flood Risk		Policy ER34 Renewable Energy Development and ER35 Wind Energy Development	ER39 Sequential Approach for Mineral Extraction, Landfill and Land Raise Proposals	** See separate list below
Loch of Lintrathen SPA / Ramsar	Wintering birds	Policy ER1 Natura 2000 & Ramsar sites	Policy ER4 Wider Heritage and Biodiversity	Policy ER22, 23, 24, & 25 Foul & surface water controls	Policy ER27 & 28 Flood Risk		Policy ER34 Renewable Energy Development and ER35 Wind Energy Development	ER39 Sequential Approach for Mineral Extraction, Landfill and Land Raise Proposals	** See separate list below
Montrose Basin SPA / Ramsar (including Duns Dish SSSI)	Wintering and breeding birds	Policy ER1 Natura 2000 & Ramsar sites	Policy ER4 Wider Heritage and Biodiversity	Policy ER22, 23, 24, & 25 Foul & surface water controls	Policy ER27 & 28 Flood Risk	Policy ER29 Coastal Development	Policy ER34 Renewable Energy Development and ER35 Wind Energy Development	ER39 Sequential Approach for Mineral Extraction, Landfill and Land Raise Proposals	** See separate list below

** List of policies relating to Other Built Development in the Countryside

General Policies

Policy S1: Development Boundaries

Policy S3: Design Quality

Policy S6: Development Principles

Building Sustainable Communities

Policy SC4: Countryside Housing - Retention of Existing Houses;

Policy SC5: Countryside Housing – Conversion of Non-residential Buildings

Policy SC6: Countryside housing – New Houses

Policy SC7: Essential Worker Housing

Policy SC8: New Country Houses

Policy SC19: Rural Employment

Policy SC20: Tourism Development

Policy SC21: Caravan Sites and Holiday Chalets

Policy SC31: Sports and Recreation Facilities

Policy SC34: Noisy Sports

Policy SC35: New Golf Course Development

Appendix 2b

**Firth of Tay & Eden Estuary (SAC/SPA/Ramsar) including:
Barry Links (SSSI): qualifying interest sand dunes, grasses and heathland
Monifieth Bay (SSSI): qualifying interest wintering & breeding birds**

Supported by Local Plan Aims	YES
Supported by Local Plan general objectives	YES
Supported by Environment & Resources objectives	YES
Supported by Environment & Resources policy	YES
Direct effect by development proposals on natural habitats, habitats of species or disturbance of species	NO
Indirect effect by proposals on natural habitats, habitats of species or disturbance of species	NO

Factor	Local Plan Policy	Purpose
Specific policy protection	Policy ER1 Natura 2000 & Ramsar Sites	Protection of environmental resource
Habitat protection	Policy ER4 Wider Heritage and Biodiversity	Protection of environmental resource
Water quality/pollution	Policy ER22, 23, 24 & 25 Foul and surface water controls	Assess impact of development on environmental resource
Flooding	Policy ER27 and 28 Flood Risk	Assess impact of development on environmental resource
Coastal development	Policy ER29 Coastal Development	Protection of environmental resource
Renewable energy	Policy ER34 Renewable Energy Developments and ER35 Wind Energy Development	Assess impact of development on environmental resource
Minerals, landfill & land raise	Policy ER39 Sequential Approach for Mineral Extraction, Landfill and Land Raise Proposals	Assess impact of development on environmental resource
Other built development in the countryside	Policy S6 Development Principles; Policies SC4, SC5, SC6, SC7 & SC8 – Countryside Housing; SC19 Rural Employment; SC20 Tourism Development; SC21 Caravan Sites and Holiday Chalets; SC31 Sports and Recreation Facilities; SC34 Noisy Sports; SC35 New Golf Course Development	Assess impact of development on environmental resource

Assessment of impact from town based development

Arbroath

No proximity to any Natura 2000 or Ramsar site. No Local Plan allocation or proposal directly or indirectly affecting any Natura 2000 or Ramsar site.

Carnoustie & Barry

Firth of Tay & Eden Estuary (SAC/SPA/Ramsar)

No Local Plan allocation or proposal directly or indirectly affecting any Natura 2000 or Ramsar site.

Foul drainage treated at Hatton WWTP and surface water dealt with by SUDS.

Monifieth

Firth of Tay & Eden Estuary (SAC/SPA/Ramsar)

No Local Plan allocation or proposal directly or indirectly affecting any Natura 2000 or Ramsar site.

Foul drainage treated at Hatton WWTP and surface water dealt with by SUDS.

Appendix 2c

Loch of Kinnordy (SPA/Ramsar): qualifying interest - wintering & breeding birds
--

Supported by Local Plan Aims	YES
Supported by Local Plan general objectives	YES
Supported by Environment & Resources objectives	YES
Supported by Environment & Resources policy	YES
Direct effect by development proposals on natural habitats, habitats of species or disturbance of species	NO
Indirect effect by proposals on natural habitats, habitats of species or disturbance of species	NO

Factor	Local Plan Policy	Purpose
Specific policy protection	Policy ER1 Natura 2000 & Ramsar Sites	Protection of environmental resource
Habitat protection	Policy ER4 Wider Heritage and Biodiversity	Protection of environmental resource
Water quality/pollution	Policy ER22, 23, 24 & 25 Foul and surface water controls	Assess impact of development on environmental resource
Flooding	Policy ER27 and 28 Flood Risk	Assess impact of development on environmental resource
Coastal development	N/A	N/A
Renewable energy	Policy ER34 Renewable Energy Developments and ER35 Wind Energy Development	Assess impact of development on environmental resource
Minerals, landfill & land raise	Policy ER39 Sequential Approach for Mineral Extraction, Landfill and Land Raise Proposals	Assess impact of development on environmental resource
Other built development in the countryside	Policy S6 Development Principles; Policies SC4, SC5, SC6, SC7 & SC8 – Countryside Housing; SC19 Rural Employment; SC20 Tourism Development; SC21 Caravan Sites and Holiday Chalets; SC31 Sports and Recreation Facilities; SC34 Noisy Sports; SC35 New Golf Course Development	Assess impact of development on environmental resource

Assessment of impact from town based development

Kirriemuir

Loch of Kinnordy (SPA/Ramsar); River Tay & Tributaries (SAC)

No Local Plan allocation or proposal directly or indirectly affecting any Natura 2000 or Ramsar site.

All foul drainage treated at WWTP and surface water dealt with by SUDS

Appendix 2d

Loch of Lintrathen (SPA/Ramsar): qualifying interest - wintering birds
Also part related to River Tay & Tributaries (SAC)(linear): qualifying interest fresh water species – otter, salmon, and lamprey

Supported by Local Plan Aims	YES
Supported by Local Plan general objectives	YES
Supported by Environment & Resources objectives	YES
Supported by Environment & Resources policy	YES
Direct effect by development proposals on natural habitats, habitats of species or disturbance of species	NO
Indirect effect by proposals on natural habitats, habitats of species or disturbance of species	NO

Factor	Local Plan Policy	Purpose
Specific policy protection	Policy ER1 Natura 2000 & Ramsar sites	Protection of environmental resource
Habitat protection	Policy ER4 Wider Heritage and Biodiversity	Protection of environmental resource
Water quality/pollution	Policy ER22, 23, 24 & 25 Foul and surface water controls	Assess impact on environmental resource
Flooding	Policy ER27 and 28 Flood Risk	Assess impact of development on environmental resource
Coastal development	N/A	N/A
Renewable energy	Policy ER34 Renewable Energy Developments and ER35 Wind Energy Development	Assess impact of development on environmental resource
Minerals, landfill & land raise	Policy ER39 Sequential Approach for Mineral Extraction, Landfill and Land Raise Proposals	Assess impact on environmental resource
Other built development in the countryside	Policy S6 Development Principles; Policies SC4, SC5, SC6, SC7 & SC8 – Countryside Housing; SC19 Rural Employment; SC20 Tourism Development; SC21 Caravan Sites and Holiday Chalets; SC31 Sports and Recreation Facilities; SC34 Noisy Sports; SC35 New Golf Course Development	Assess impact of development on environmental resource

Appendix 2e

Montrose Basin (SPA/Ramsar): qualifying interest - wintering & breeding birds
Including Duns Dish (SSSI/Ramsar): qualifying interest - wintering & breeding birds
River South Esk (linear) (SAC): qualifying interest – fresh water mussels and salmon

Supported by Local Plan Aims	YES
Supported by Local Plan general objectives	YES
Supported by Environment & Resources objectives	YES
Supported by Environment & Resources policy	YES
Direct effect by development proposals on natural habitats, habitats of species or disturbance of species	NO
Indirect effect by proposals on natural habitats, habitats of species or disturbance of species	NO

Factor	Local Plan Policy	Purpose
Specific policy protection	Policy ER1 Natura 2000 & Ramsar sites	Protection of environmental resource
Habitat protection	Policy ER4 Wider Heritage and Biodiversity	Protection of environmental resource
Water quality/pollution	Policy ER22, 23, 24 & 25 Foul and surface water controls	Assess impact on environmental resource
Flooding	Policy ER27 and 28 Flood Risk	Assess impact of development on environmental resource
Coastal development	Policy ER29 Coastal Development	Protection of environmental resource
Renewable energy	Policy ER34 Renewable Energy Developments and ER35 Wind Energy Development	Assess impact of development on environmental resource
Minerals, landfill & land raise	Policy ER39 Sequential Approach for Mineral Extraction, Landfill and Land Raise Proposals	Assess impact on environmental resource
Other built development in the countryside	Policy S6 Development Principles; Policies SC4, SC5, SC6, SC7 & SC8 – Countryside Housing; SC19 Rural Employment; SC20 Tourism Development; SC21 Caravan Sites and Holiday Chalets; SC31 Sports and Recreation Facilities; SC34 Noisy Sports; SC35 New Golf Course Development	Assess impact of development on environmental resource

Assessment of impact from town based development

Brechin

River South Esk SAC

No Local Plan allocation directly or indirectly affecting Natura 2000 site.

Angus Council intend to construct a flood prevention scheme along the River Street frontage to the River South Esk (See B13: Brechin Flood Prevention Scheme below).

B13: Brechin Flood Prevention Scheme

The project is being developed in full consultation with relevant agencies and has been subject to a separate Environmental Assessment.

This policy has been identified as requiring further assessment on its potential effect on the River South Esk SAC. Details of this second stage of assessment are set out on pages 40 - 42;

Development proposals will require all foul drainage treated at WWTP and surface water dealt with by SUDS

Montrose

Montrose Basin (SPA/Ramsar)

No Local Plan allocation or proposal directly or indirectly affecting Natura 2000 or Ramsar site.

Development proposals will require all foul drainage treated at WWTP and surface water dealt with by SUDS

Appendix 2f

River Tay & Tributaries (linear) (SAC): qualifying interest – fresh water species otter, salmon, lamprey

Supported by Local Plan Aims	YES
Supported by Local Plan general objectives	YES
Supported by Environment & Resources objectives	YES
Supported by Environment & Resources policy	YES

Direct effect by development proposals on natural habitats, habitats of species or disturbance of species	NO
Indirect effect by proposals on natural habitats, habitats of species or disturbance of species	NO

Factor	Local Plan Policy	Purpose
Specific policy protection	Policy ER1 Natura 2000 & Ramsar sites	Protection of environmental resource
Habitat protection	Policy ER4 Wider Heritage and Biodiversity	Protection of environmental resource
Water quality/pollution	Policy ER22, 23, 24 & 25 Foul and surface water controls	Assess impact on environmental resource
Flooding	Policy ER27 and 28 Flood Risk	Assess impact of development on environmental resource
Coastal development	Policy ER29 Coastal Development	Protection of environmental resource
Renewable energy	Policy ER34 Renewable Energy Developments and ER35 Wind Energy Development	Assess impact on environmental resource
Minerals, landfill & land raise	Policy ER39 Sequential Approach for Mineral Extraction, Landfill and Land Raise Proposals	Assess impact on environmental resource
Other built development in the countryside	Policy S6 Development Principles; Policies SC4, SC5, SC6, SC7 & SC8 – Countryside Housing; SC19 Rural Employment; SC20 Tourism Development; SC21 Caravan Sites and Holiday Chalets; SC31 Sports and Recreation Facilities; SC34 Noisy Sports; SC35 New Golf Course Development	Assess impact of development on environmental resource

Assessment of impact from town based development

Forfar

River Tay and Tributaries (SAC)

No Local Plan allocation or proposal directly or indirectly affecting Natura 2000 site.

Development proposals will require all foul drainage treated at WWTP and surface water dealt with by SUDS.

Kirriemuir

River Tay & Tributaries (SAC)

No Local Plan allocation or proposal directly or indirectly affecting any Natura 2000 or Ramsar site.

Development proposals will require all foul drainage treated at WWTP and surface water dealt with by SUDS.