

Performance Key

Arrows: ↑ Better ↓ Worse → No change ■ Cannot be compared

Corporate Management

↑ Of the 2008/09 indicators compared with 2007/08, 6 were better, 1 was unchanged and 5 were worse; when compared with Scotland 9 were above average and 3 were below average..

↑ The average number of working days per employee lost through sickness absence: Teachers

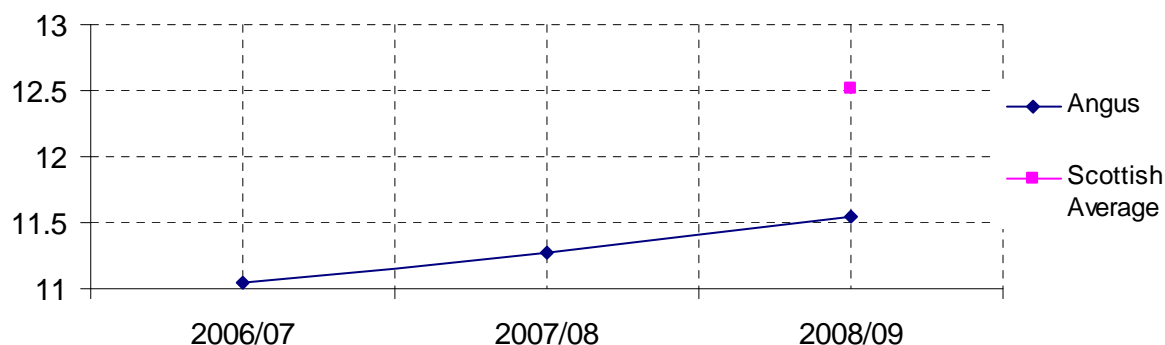
- Performance for this measure improved by 13.75% in 2008/09.
- Angus Council performance was better than the Scottish average.
- We are among the 2nd quartile of Scottish councils for this measure. Rank 11.



	2006/07	2007/08	2008/09
Angus	6.97	7.49	6.46
Scottish Average			7.36

↓ The average number of working days per employee lost through sickness absence: All other local government employees

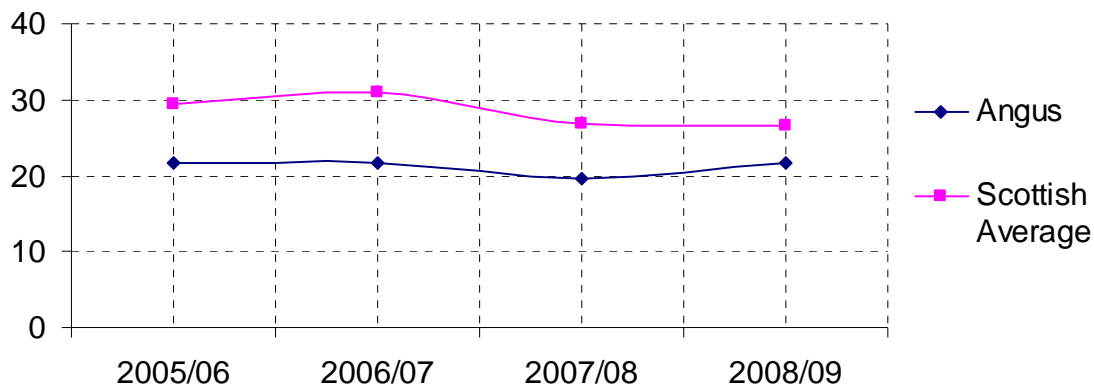
- Performance for this measure declined by 2.48% in 2008/09.
- Angus Council performance was better than the Scottish average.
- We are among the 2nd quartile of Scottish councils for this measure. Rank 9.



	2006/07	2007/08	2008/09
Angus	11.04	11.27	11.55
Scottish Average			12.51

↓ Number of litigation claims incurred by the council in the current reporting year per 10,000 population

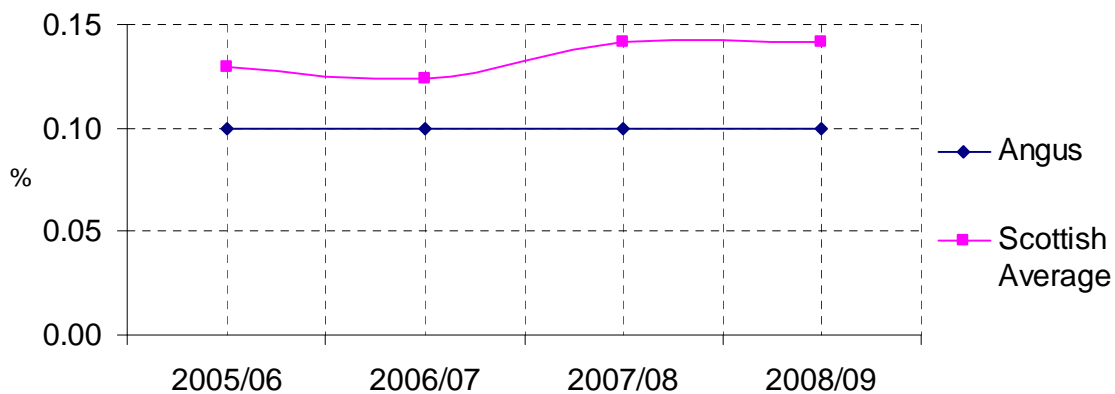
- Performance for this measure declined by 11.79% in 2008/09.
- Angus Council performance was better than the Scottish average.
- We are among the 2nd quartile of Scottish councils for this measure. Rank 12.



	2005/06	2006/07	2007/08	2008/09
Angus	21.6	21.7	19.5	21.8
Scottish Average	29.3	30.9	26.8	26.7

→ The value of civil liability claims incurred by the council in the year as a percentage of revenue budget

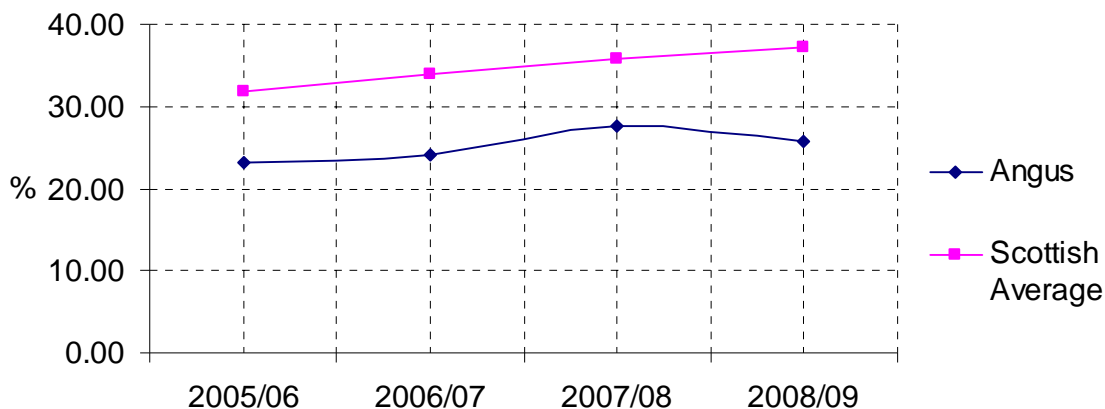
- Performance for this measure did not change in 2008/09.
- Angus Council performance was better than the Scottish average.
- We are among the 1st quartile of Scottish councils for this measure. Rank 6.



	2005/06	2006/07	2007/08	2008/09
Angus	0.1	0.1	0.1	0.1
Scottish Average	0.13	0.12	0.14	0.14

↓ The percentage of the highest paid 2% of earners among council employees that are women

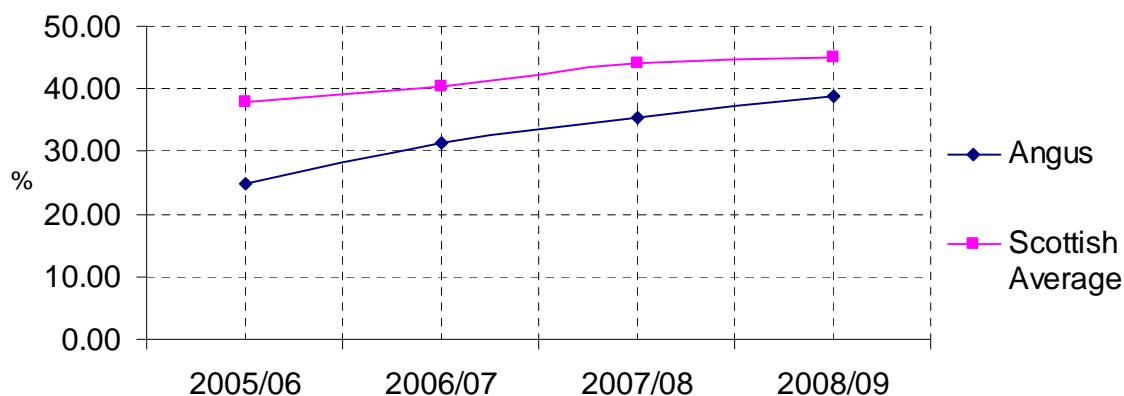
- Performance for this measure declined by 6.91% in 2008/09.
- Angus Council performance was not as good as the Scottish average.
- We are among the 4th quartile of Scottish councils for this measure. Rank 30.



	2005/06	2006/07	2007/08	2008/09
Angus	23.20	24.20	27.50	25.6
Scottish Average	31.70	33.90	35.90	37.09

↑ The percentage of the highest paid 5% of earners among council employees that are women

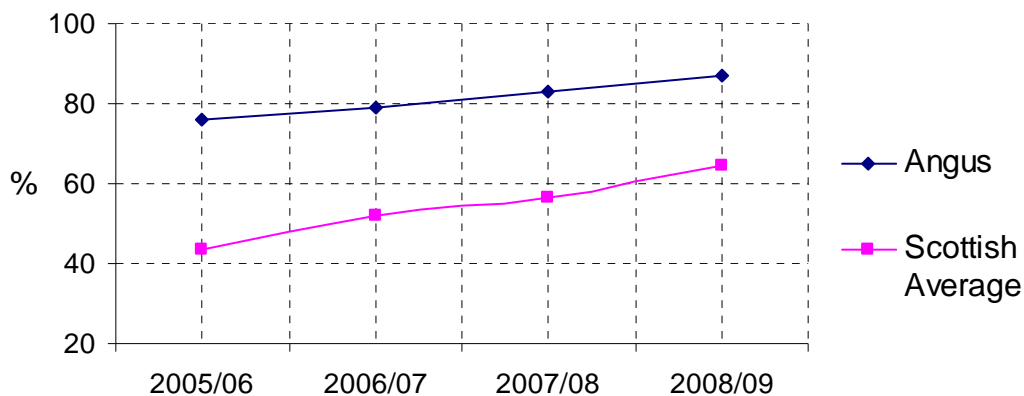
- Performance for this measure improved by 10.08% in 2008/09.
- Angus Council performance was not as good as the Scottish average.
- We are among the 3rd quartile of Scottish councils for this measure. Rank 21.



	2005/06	2006/07	2007/08	2008/09
Angus	25.00	31.30	35.30	38.86
Scottish Average	38.00	40.40	44.00	45.15

↑ Percentage of public service buildings that are suitable for and accessible to disabled people

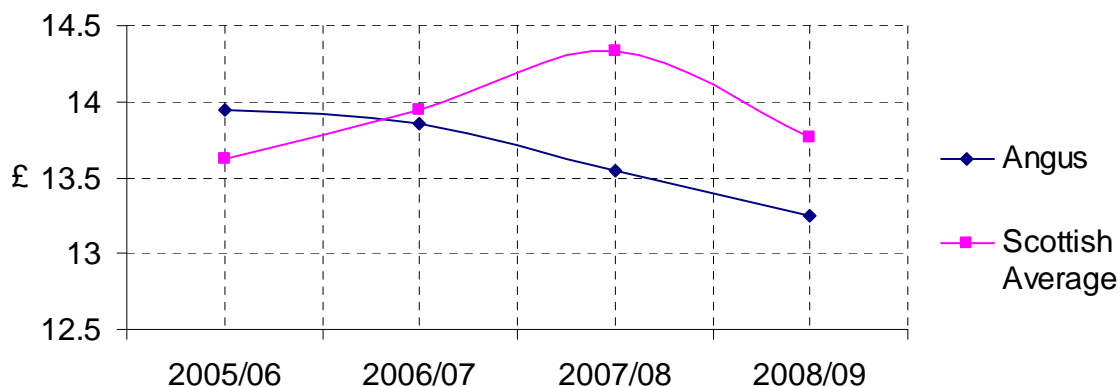
- Performance for this measure improved by 5.19% in 2008/09.
- Angus Council performance was better than the Scottish average.
- We are among the 1st quartile of Scottish councils for this measure. Rank 2.



	2005/06	2006/07	2007/08	2008/09
Angus	76.2	79	82.8	87.1
Scottish Average	43.4	51.9	56.6	64.58

↑ Cost of collecting council tax per dwelling

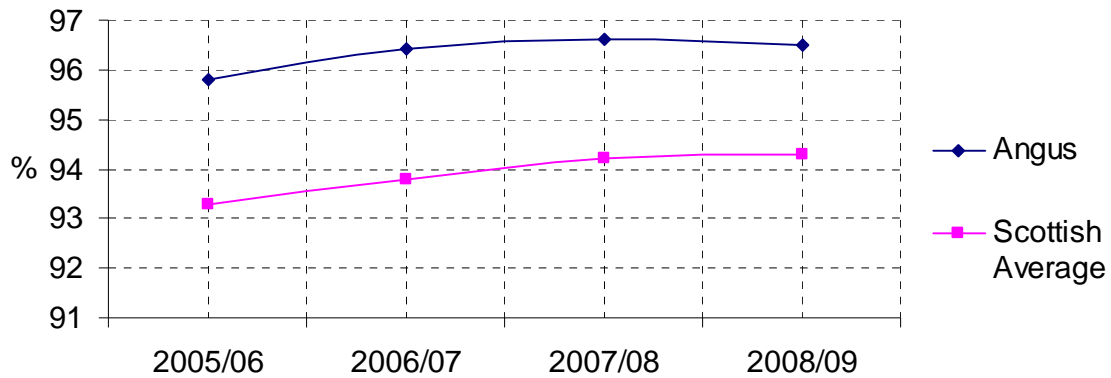
- Performance for this measure improved by 2.14% in 2008/09.
- Angus Council performance was better than the Scottish average.
- We are among the 2nd quartile of Scottish councils for this measure. Rank 13.



	2005/06	2006/07	2007/08	2008/09
Angus	13.95	13.85	13.54	13.25
Scottish Average	13.62	13.95	14.33	13.76

↓ **Percentage of income due from council tax for the year that was received by the end of the year**

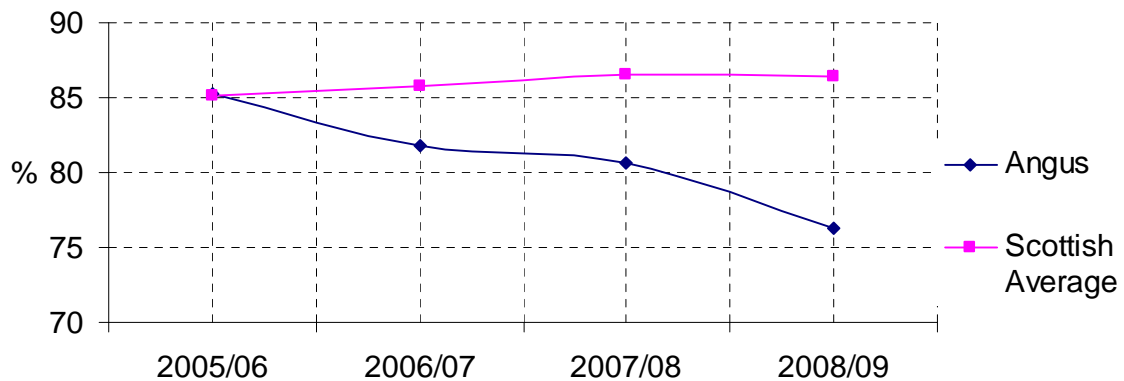
- Performance for this measure declined by 0.10% in 2008/09.
- Angus Council performance was better than the Scottish average.
- We are among the 1st quartile of Scottish councils for this measure. Rank 5.



	2005/06	2006/07	2007/08	2008/09
Angus	95.8	96.4	96.6	96.5
Scottish Average	93.30	93.80	94.20	94.3

↓ **Percentage of invoices sampled paid within 30 days**

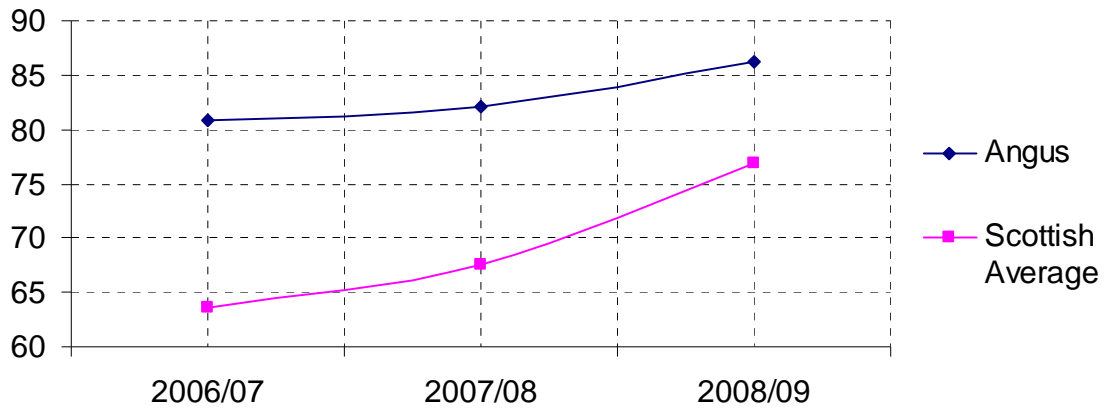
- Performance for this measure declined by 5.33% in 2008/09.
- Angus Council performance was not as good as the Scottish average.
- We are among the 4th quartile of Scottish councils for this measure. Rank 30.



	2005/06	2006/07	2007/08	2008/09
Angus	85.2	81.8	80.6	76.3
Scottish Average	85.1	85.8	86.5	86.4

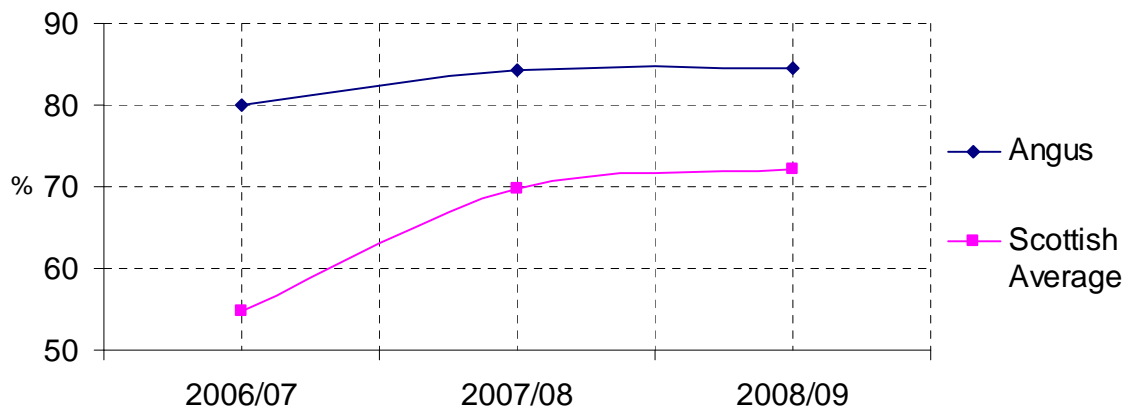
↑ Proportion of gross internal floor area of operational buildings that is in satisfactory condition

- Performance for this measure improved 4.99% in 2008/09.
- Angus Council performance was better than the Scottish average.
- We are among the 1st quartile of Scottish councils for this measure. Rank 8.



↑ Percentage of operational buildings that are suitable for their current use

- Performance for this measure improved by 0.48% in 2008/09.
- Angus Council performance was better than the Scottish average.
- We are among the 1st quartile of Scottish councils for this measure. Rank 8.



	2006/07	2007/08	2008/09
Angus	80.00	84.20	84.6
Scottish Average	54.70	69.70	72.1