

## Angus Council Report Card

### Performance Key

Arrows:    **↑** Better    **↓** Worse    **→** No change    **■** Cannot be compared

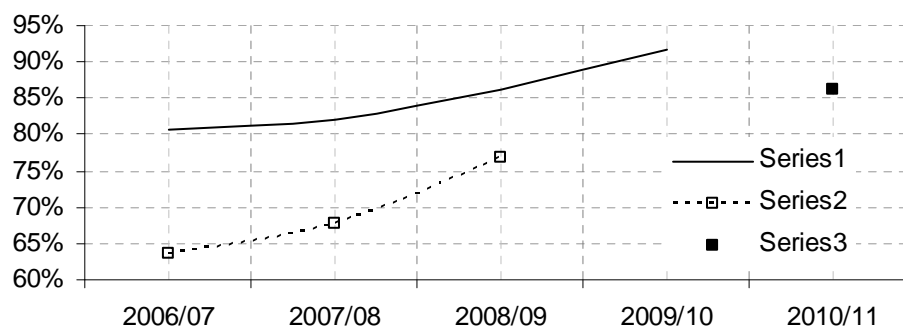
### ↑ Assets

Further information is available in the:

[2010/11 Corporate Services Service Plan](#) and  
[Corporate Services Department Annual Report 2009/2010.](#)

### ↑ **Proportion of gross internal floor area of operational buildings that is in satisfactory condition**

	2006/07	2007/08	2008/09	2009/10	2010/11
Angus	80.8%	82.1%	86.2%	91.6%	
Scotland	63.6%	67.6%	76.9%		
Target					86.2%



### ↑ **Percentage of operational buildings that are suitable suitable for their current use**

	2006/07	2007/08	2008/09	2009/10	2010/11
Angus	80%	84.2%	84.6%	85%	
Scotland	54.7%	69.7%	72.1%		
Target					84.6%

