

## Angus Council Report Card

### Performance Key

Arrows:    **↑** Better    **↓** Worse    **→** No change    **■** Cannot be compared

### **↑** Criminal Justice Social Work

Further information is available in the:

[2010/11 Social Work and Health Service Plan](#)

[Social Work and Health Department Annual Report 2009/2010](#)

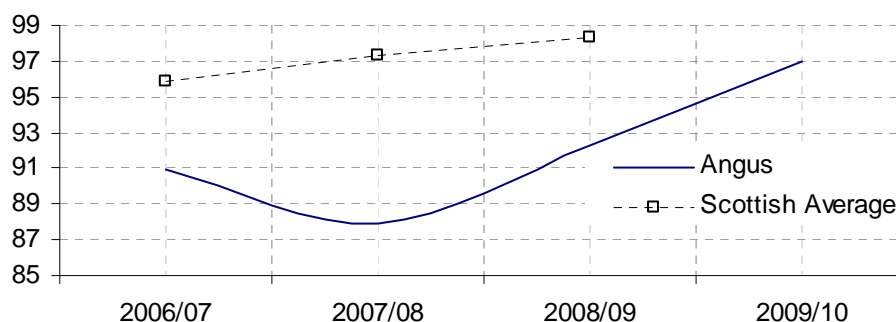
[Chief Social Work Officer's Report](#)

[Angus Child Protection Committee Report 2009/2010](#) and

[committee reports containing information on Crime and Anti-Social Behaviour in 2010](#)

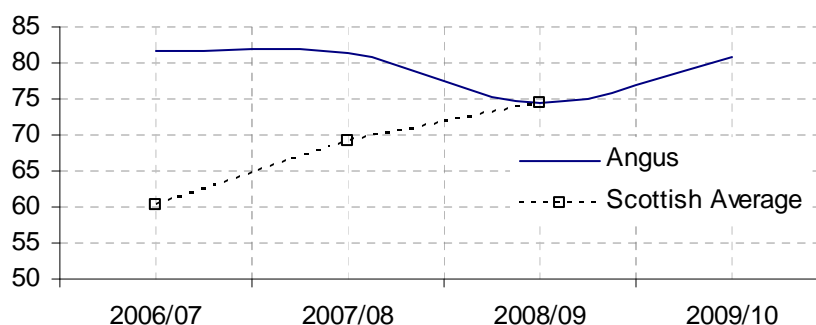
### **↑** **Social enquiry reports submitted to courts by due date**

	2006/07	2007/08	2008/09	2009/10
Angus	90.9	87.9	92.3	97.0
Scotland	95.9	97.3	98.3	



### **↑** **New probationers seen by supervising officer in week**

	2006/07	2007/08	2008/09	2009/10
Angus	81.6	81.5	74.5	80.88
Scotland	60.4	69.3	74.5	



↑ Average hours per week to complete community service orders

	2006/07	2007/08	2008/09	2009/10
Angus	3.2	3.4	3.6	3.8
Scotland	3.5	3.3	3.2	

