

Angus Council Report Card

Performance Key

Arrows: **↑** Better **↓** Worse **→** No change **■** Cannot be compared

↑ Community Care Services

Further information is available in the:

[Social Work and Health Department Annual Report 2009/2010](#)

[Chief Social Work Officer's Report](#) and

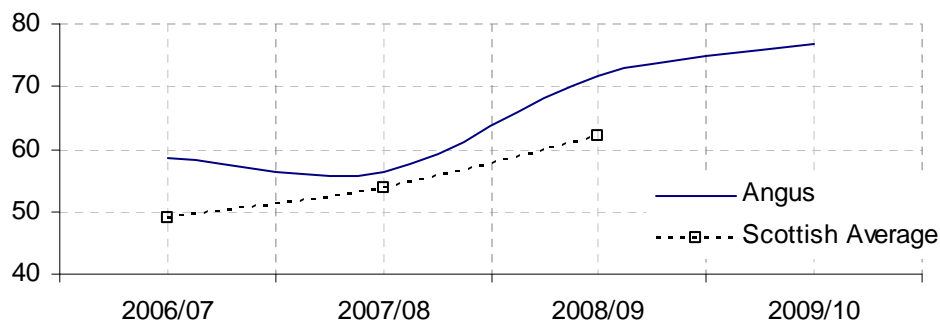
[committee reports containing information on Community Care in 2010](#)

■ Achievement of targets for assessment and service delivery

Due to ongoing national issues indicator is not reported.

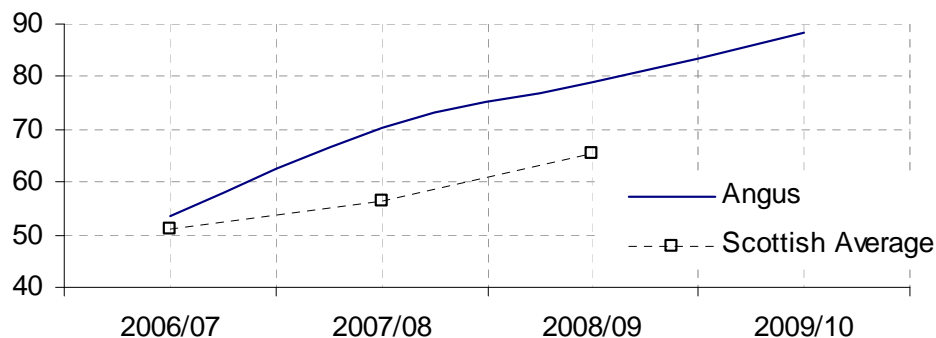
↑ Residential Accommodation: Staff Qualification Older People

	2006/07	2007/08	2008/09	2009/10
Angus	58.6	56.3	71.8	76.76
Scotland	49	53.9	62	



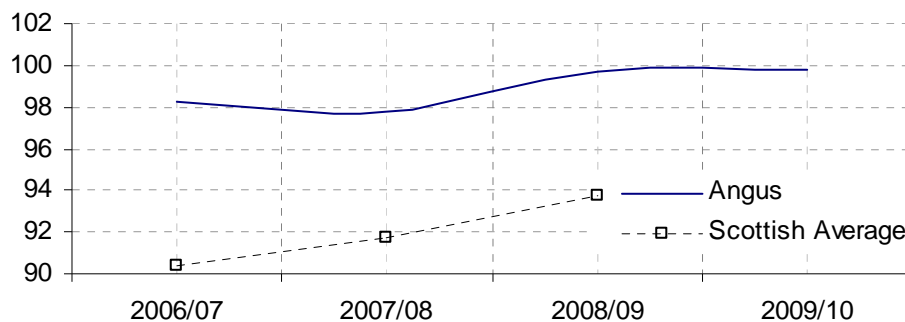
↑ Residential Accommodation: Staff Qualification Other Adults

	2006/07	2007/08	2008/09	2009/10
Angus	53.7	70.3	78.9	88.2
Scotland	51.1	56.4	65.4	



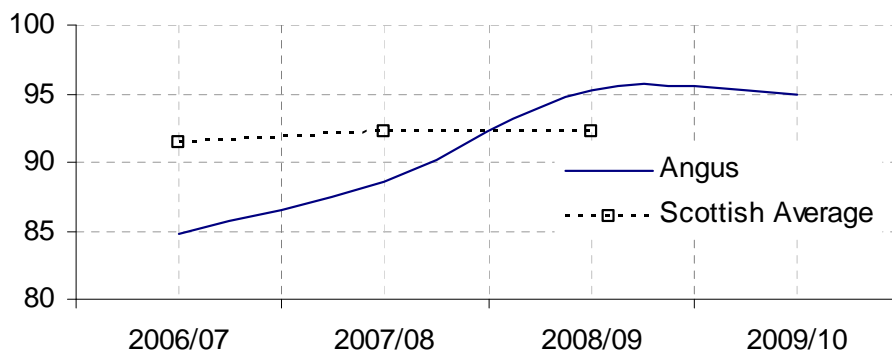
↑ Residential Accommodation: Single Rooms Older People

	2006/07	2007/08	2008/09	2009/10
Actual	98.21	97.75	99.7	99.75
Scotland	90.4	91.7	93.7	



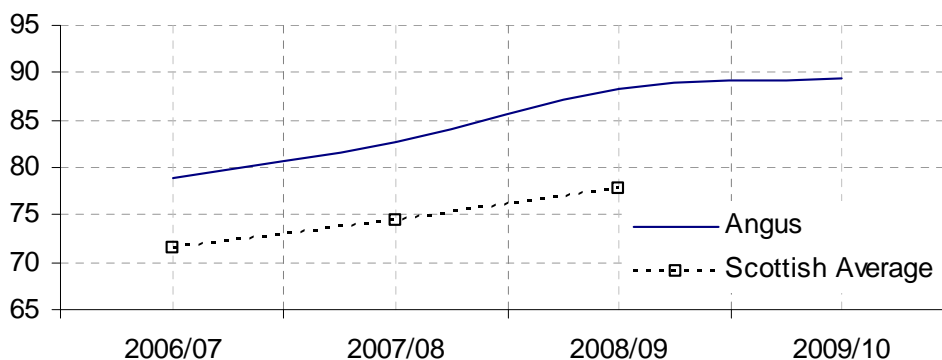
↑ Residential Accommodation: Single Rooms Other Adults

	2006/07	2007/08	2008/09	2009/10
Actual	84.8	88.6	95.2	94.9
Scotland	91.5	92.3	92.3	



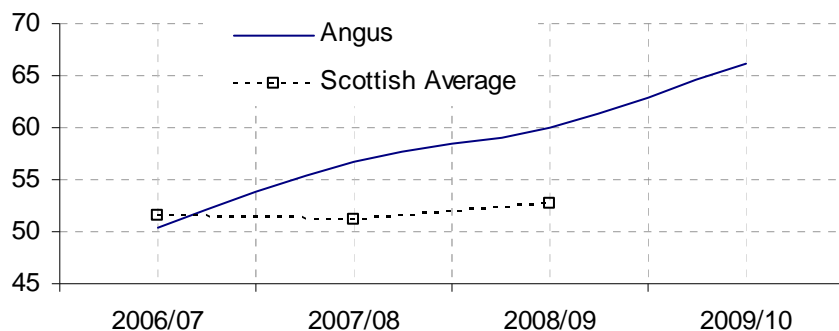
↑ Residential Accommodation: En-Suite Older People

	2006/07	2007/08	2008/09	2009/10
Actual	78.9	82.70	88.3	89.4
Scotland	71.5	74.3	77.73	



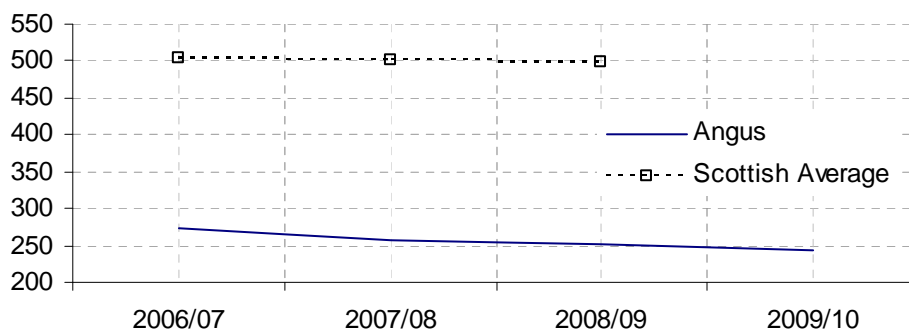
↑ Residential Accommodation: En-Suite Other Adults

	2006/07	2007/08	2008/09	2009/10
Actual	78.9	82.70	88.3	89.4
Scotland	71.5	74.3	77.73	



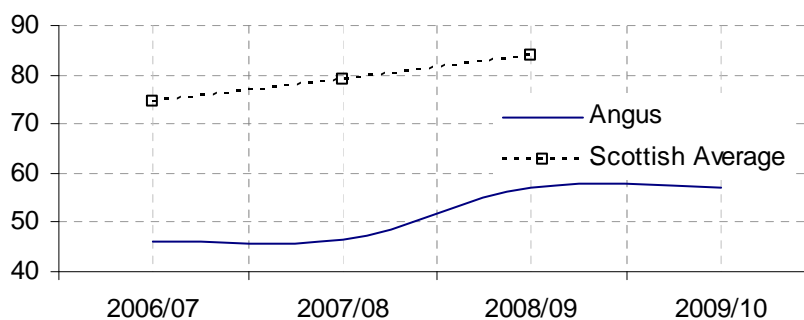
↓ homecare hours per 1,000 population aged 65+

	2006/07	2007/08	2008/09	2009/10
Actual	273.5	257.9	252.4	243.7
Scotland	504.3	500.7	497.5	



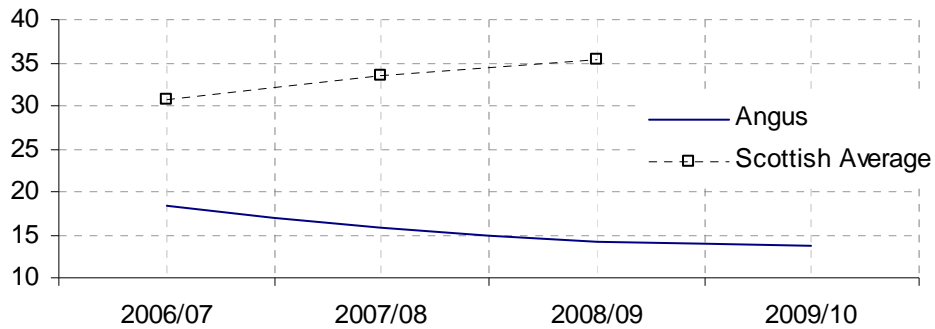
↑ % receiving Personal Care

	2006/07	2007/08	2008/09	2009/10
Actual	46.1	46.5	57	57.2
Scotland	74.6	79.2	84	



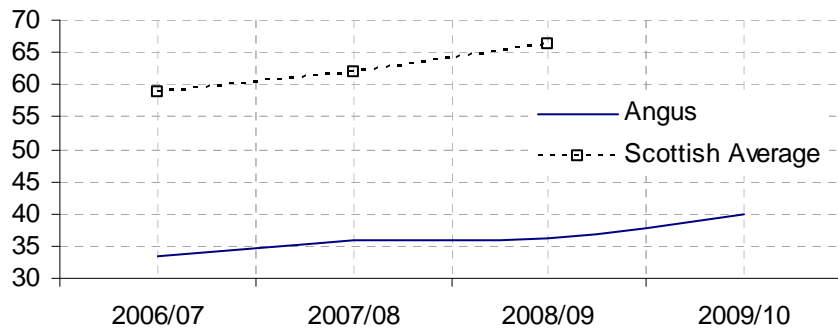
↓ % receiving a service during evening/overnight

	2006/07	2007/08	2008/09	2009/10
Actual	18.4	15.7	14.2	13.8
Scotland	30.7	33.5	35.4	



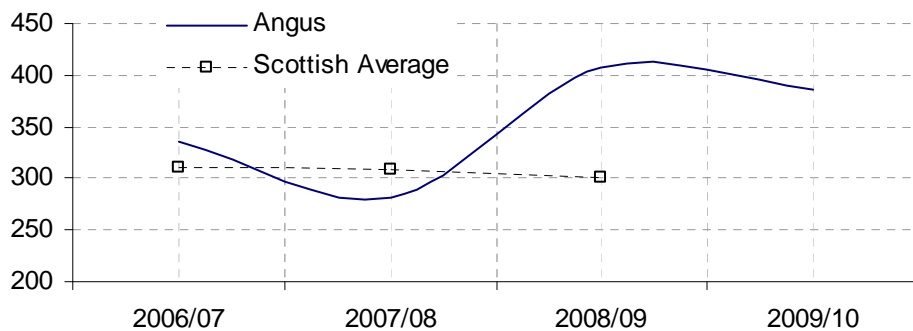
↑ % receiving a service at weekends

	2006/07	2007/08	2008/09	2009/10
Actual	33.5	35.8	36.3	40
Scotland	58.7	61.9	66.3	



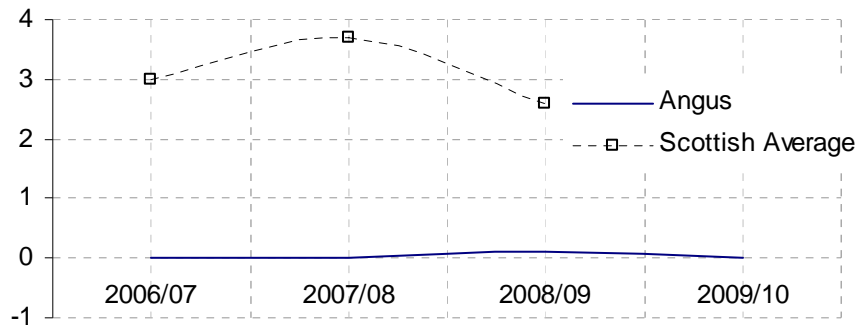
↓ No. of respite nights provided per 1,000 popn. aged 65+

	2006/07	2007/08	2008/09	2009/10
Actual	336.4	281.2	406.8	385.6
Scotland	310.1	308.5	300.1	



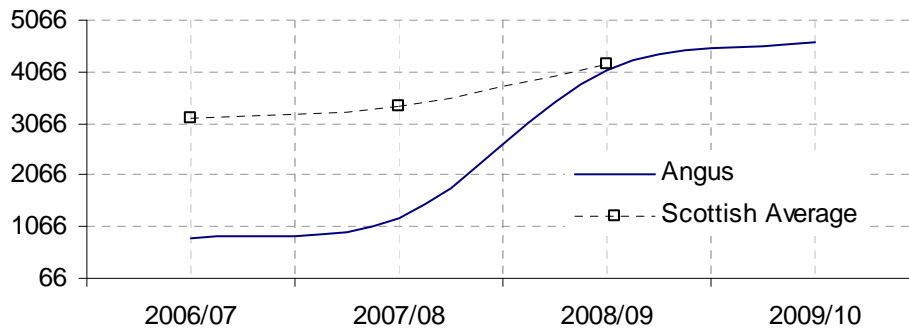
↓ % of respite nights not in a care home aged 65+

	2006/07	2007/08	2008/09	2009/10
Actual	0	0	0.1	0
Scotland	3	3.7	2.6	



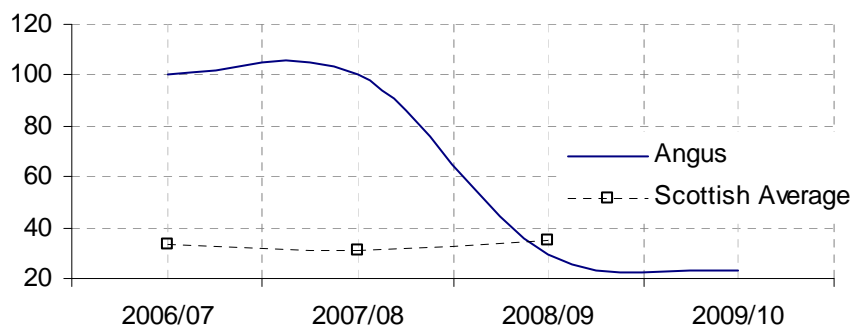
↑ No. of daytime respite hrs per 1,000 popn. aged 65+

	2006/07	2007/08	2008/09	2009/10
Actual	848.9	1237.2	4098	4650.2
Scotland	3167.8	3400.2	4208.3	



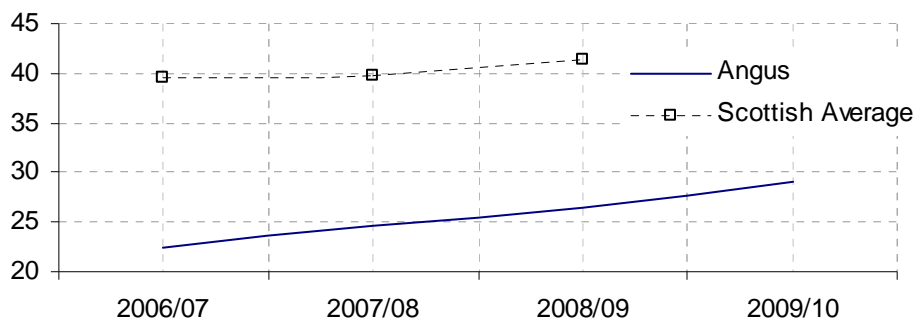
↓ % of daytime respite not in a day centre aged 65+

	2006/07	2007/08	2008/09	2009/10
Actual	100	100	29.3	23.4
Scotland	33.1	31.3	34.6	



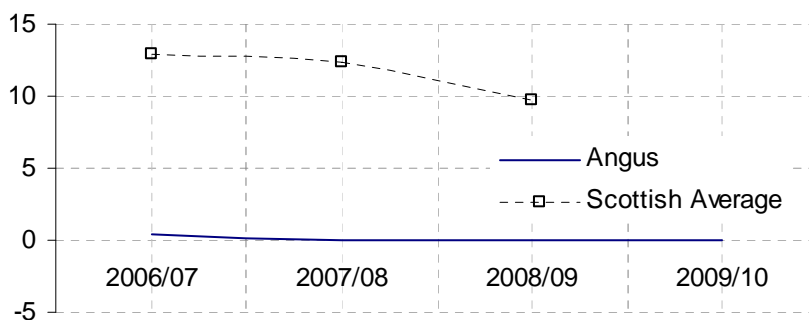
↑ No. of respite nights per 1,000 popn. aged 18-64

	2006/07	2007/08	2008/09	2009/10
Actual	22.5	24.6	26.5	29.1
Scotland	39.5	39.7	41.3	



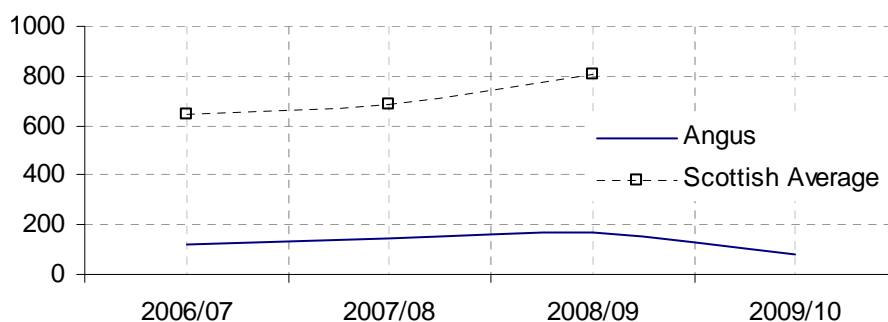
→ % of respite nights not in a care home aged 18-64

	2006/07	2007/08	2008/09	2009/10
Actual	0.4	0	0	0
Scotland	12.9	12.3	9.7	



↓ No. of daytime respite hours per 1,000 popn aged 18-64

	2006/07	2007/08	2008/09	2009/10
Actual	119.7	141.4	169.0	78.7
Scotland	645.6	682.7	809.8	



➔ % of daytime respite not in a day centre aged 18-64

	2006/07	2007/08	2008/09	2009/10
Actual	100	100	100	100
Scotland	28.3	32.3	39.9	

