

## Angus Council Report Card

### Performance Key

Arrows:    **↑** Better    **↓** Worse    **→** No change    **■** Cannot be compared

### ↓ Cultural and Community Services

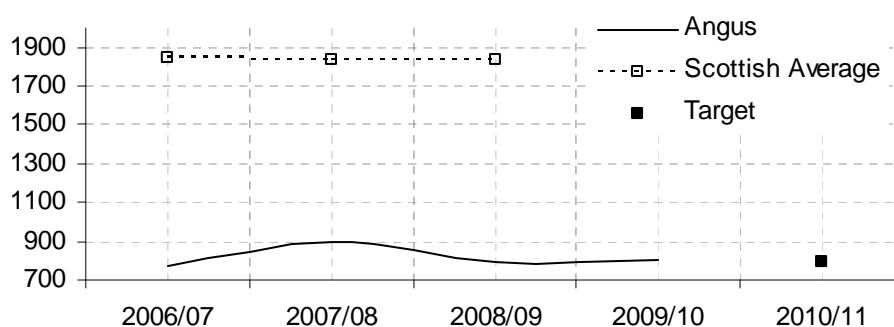
Further information is available in the:

[2010/11 Neighbourhood Services Service Plan](#) and

[Neighbourhood Services Department Annual Report 2009/2010](#)

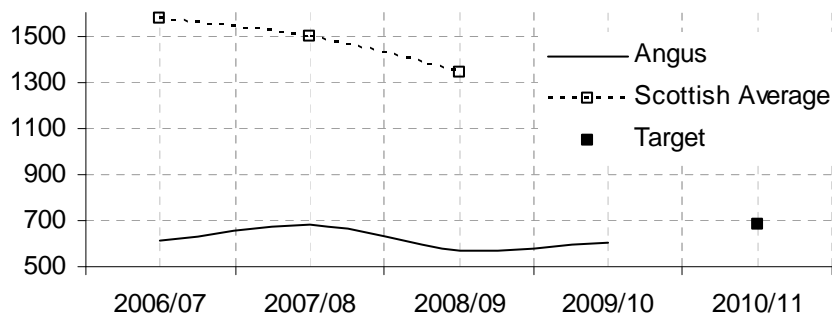
### ↑ Visits to/usages of council funded/part funded museums per 1,000 popn

	2006/07	2007/08	2008/09	2009/10	2010/11
Angus	769	897	795	806	
Scotland	1844	1834	1836		
Target					795



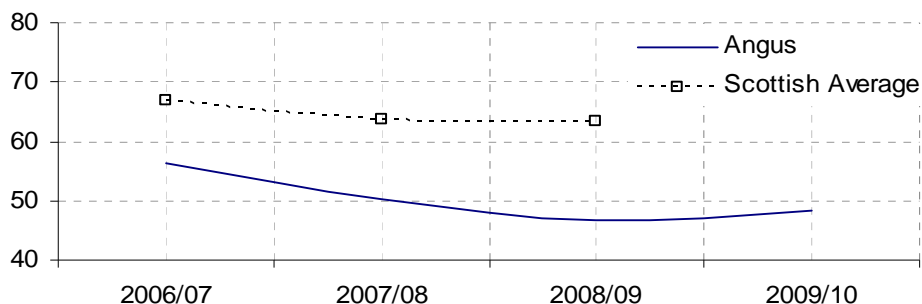
### ↑ Number of visits that were in person per 1,000 population

	2006/07	2007/08	2008/09	2009/10	2010/11
Angus	613	678	565	600	
Scotland	1574	1497	1340		
Target					678



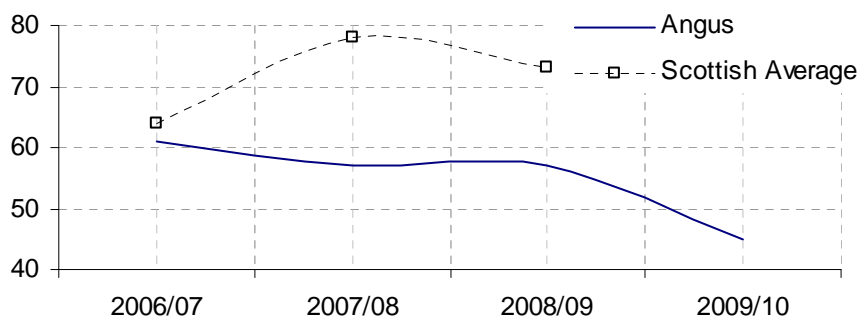
**↑ Percentage of national target met for replenishing lending stock for adults**

	2006/07	2007/08	2008/09	2009/10
Angus	56.3	50.3	46.79	48.2
Scotland	66.9	63.6	63.25	



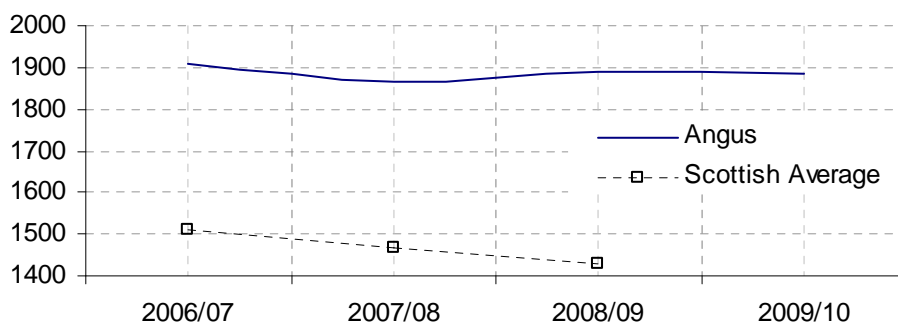
**↓ Percentage of national target met for replenishing lending stock for children and teenagers**

	2006/07	2007/08	2008/09	2009/10
Angus	61	57	57	45.0
Scotland	64	78	73	



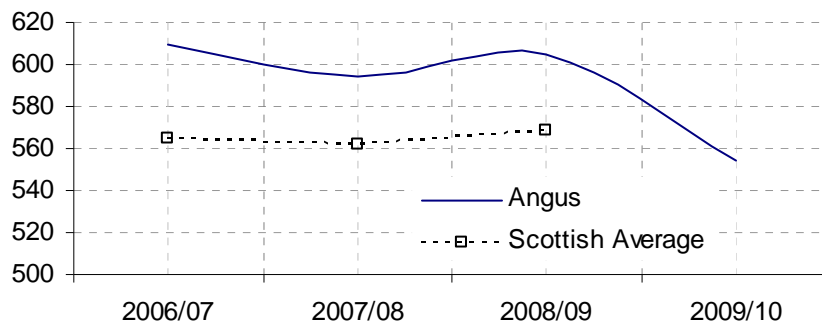
**↓ Total number of closing stock items per 1,000 population for adult lending book and audio-visual stock**

	2006/07	2007/08	2008/09	2009/10
Angus	1909	1868	1891	1885.3
Scotland	1512	1469	1431	



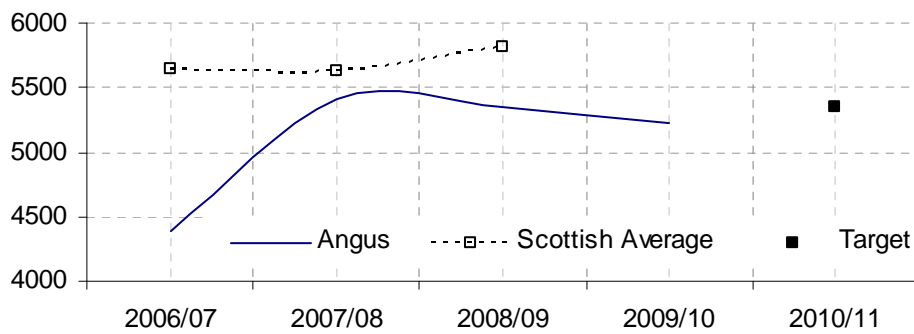
↓ **Total number of closing stock items per 1,000 population for children's and teenagers' stock**

	2006/07	2007/08	2008/09	2009/10
Angus	610	594	605	554.7
Scotland	565	562	569	



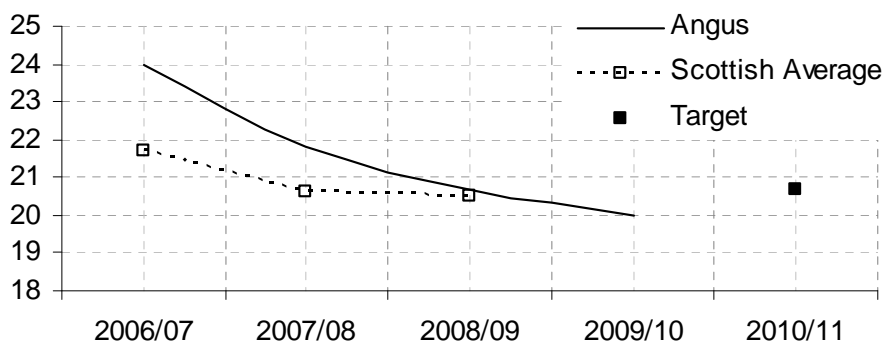
↓ **The number of visits to council libraries per 1,000 population**

	2006/07	2007/08	2008/09	2009/10	2010/11
Angus	4395	5416	5344	5221.6	
Scotland	5641	5623	5819		
Target					5344



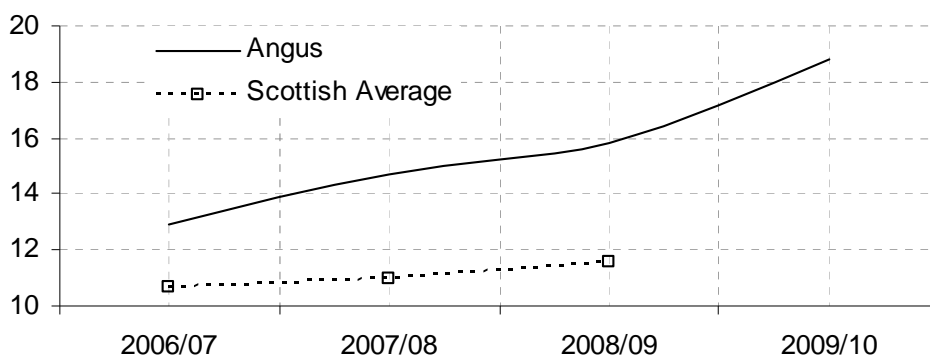
↓ **Library borrowers as a percentage of the resident population**

	2006/07	2007/08	2008/09	2009/10	2010/11
Angus	24	21.8	20.7	20.0	
Scotland	21.7	20.6	20.5		
Target					20.7



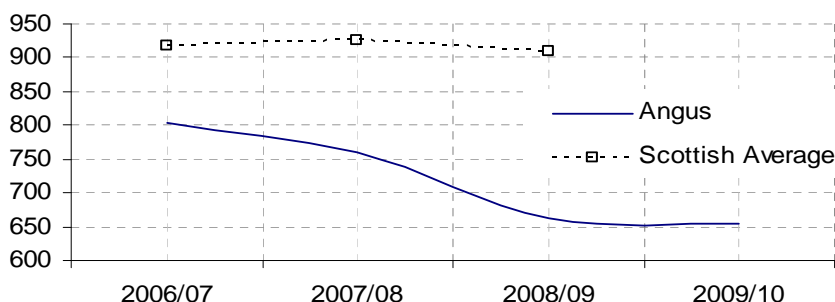
**↑ Number of Learning Centre and Learning Access Point users as a percentage of the population**

	2006/07	2007/08	2008/09	2009/10
Angus	12.9	14.7	15.8	18.8
Scotland	10.7	11	11.6	



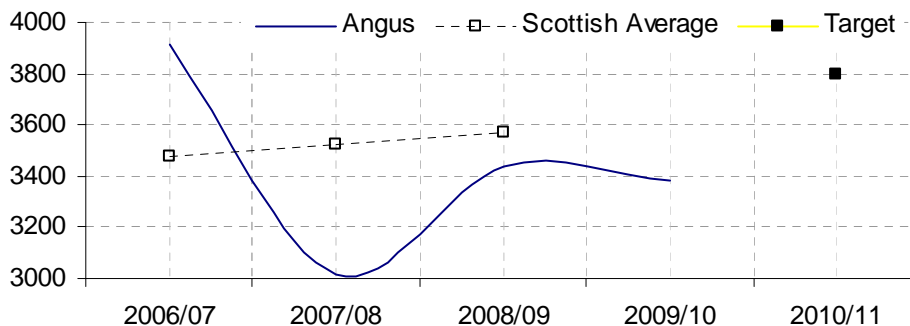
**↓ No. of occasions that Learning Centre and Learning Access Point terminals are accessed per 1,000 popn**

	2006/07	2007/08	2008/09	2009/10
Angus	802.8	760.6	663.4	654.3
Scotland	916.7	926.3	910.4	



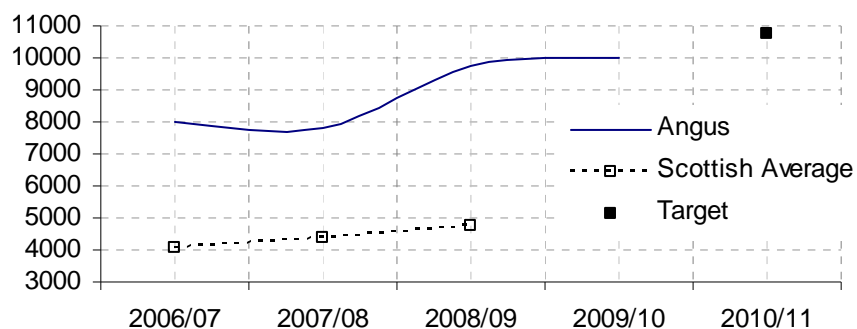
**↓ Swimming pool attendances per 1,000 population**

	2006/07	2007/08	2008/09	2009/10	2010/11
Angus	3911	3016	3441	3385.2	
Scotland	3476	3520	3569		
Target	NA	NA	NA	NA	3794



**↑ Indoor sports/leisure attendances per 1,000 population**

	2006/07	2007/08	2008/09	2009/10	2010/11
Angus	7991	7830	9753	9978.7	
Scotland	4085	4372	4761		
Target	NA	NA	NA	NA	10753



**→ Hectares of maintained public open space per 1,000 head of population**

	2008/09	2009/10	2010/11
Angus	5.42	5.42	
Target			5.42