

Angus Council Report Card

Performance Key

Arrows: **↑** Better **↓** Worse **→** No change **■** Cannot be compared

↑ The Education of Children

Further information is available in the:

[six month performance report on the Angus Single Outcome Agreement \(99/10\)](#)

[2010/11 Education Service Plan](#)

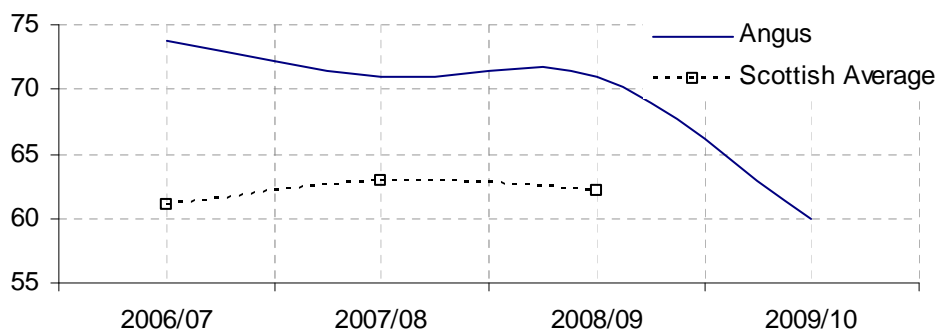
[Standards and Quality Report 2009](#) and

[Education Department Annual Report 2009/2010](#).

Note. The academic year runs from August to July, the financial year runs from April to March, as such, the 2008/09 academic year relates to the 2009/10 financial year.

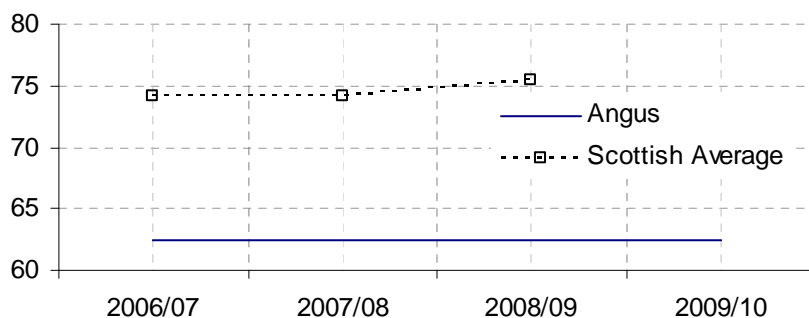
↓ % primary schools ratio pupils:places 61%-100%

Financial Year	2006/07	2007/08	2008/09	2009/10
Angus	73.7	70.9	70.9	60.00
Scotland	61.1	62.9	62.1	



→ % secondary schools ratio pupils:places 61%-100%

Financial Year	2006/07	2007/08	2008/09	2009/10
Angus	62.5	62.5	62.5	62.5
Scotland	74.2	74.1	75.4	



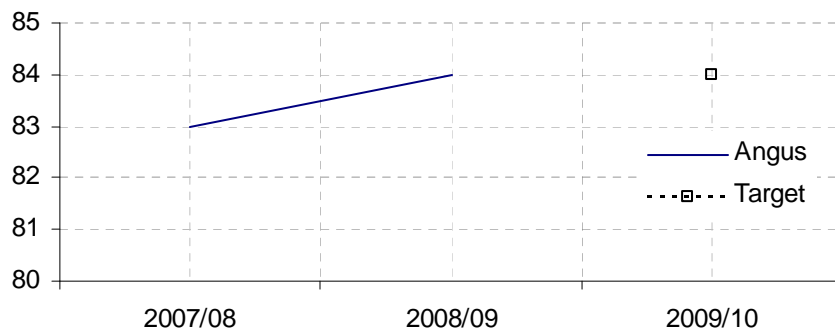
↓ The overall % of school leavers moving to a positive destination

Academic Year	2006/07	2007/08	2008/09	2009/10
Actual	89.8	89.9	87.4	
Target				90



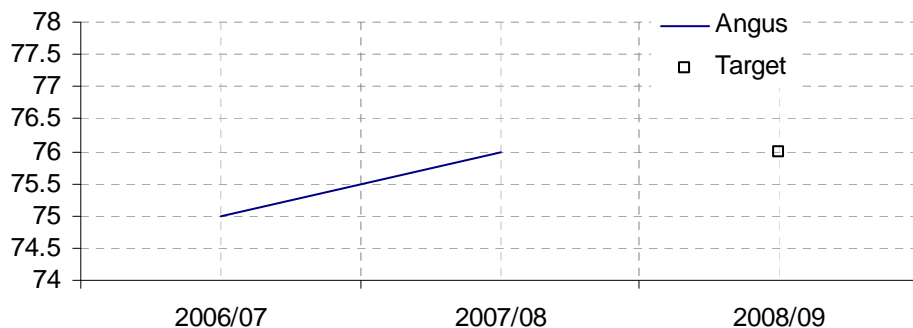
↑ % (3 year averages) of primary pupils attaining appropriate 5-14 levels in Reading

Academic Year	2007/08	2008/09	2009/10
Actual	83	84	
Target			84



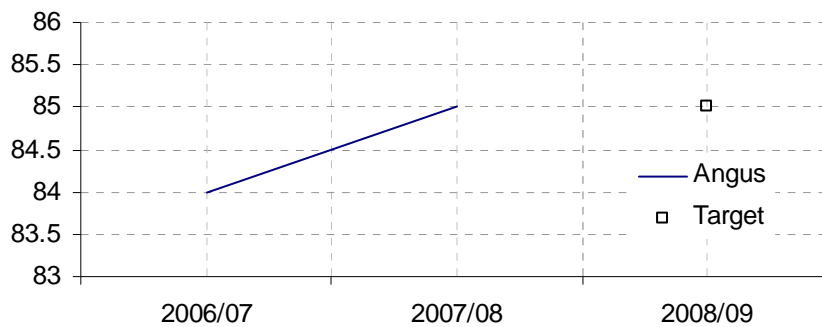
↑ % (3 year averages) of primary pupils attaining appropriate 5-14 levels in Writing

Academic Year	2007/08	2008/09	2009/10
Actual	75	76	
Target			76



↑ % (3 year averages) of primary pupils attaining appropriate 5-14 levels in Maths

Academic Year	2007/08	2008/09	2009/10
Actual	84	85	
Target			85



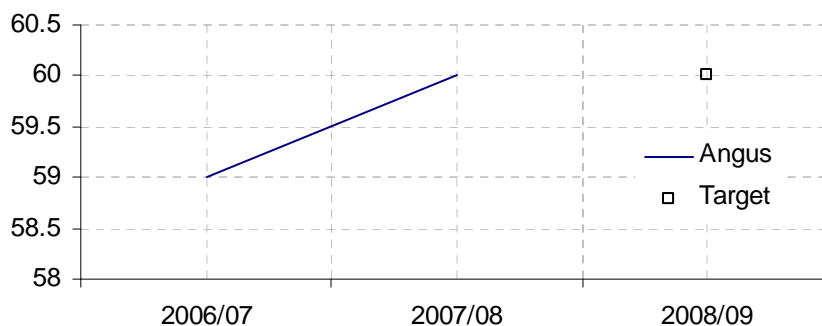
↑ % (3 year averages) of secondary pupils achieving 5-14 level E in Reading by the end of S2

Academic Year	2007/08	2008/09	2009/10
Actual	67	68	
Target			68



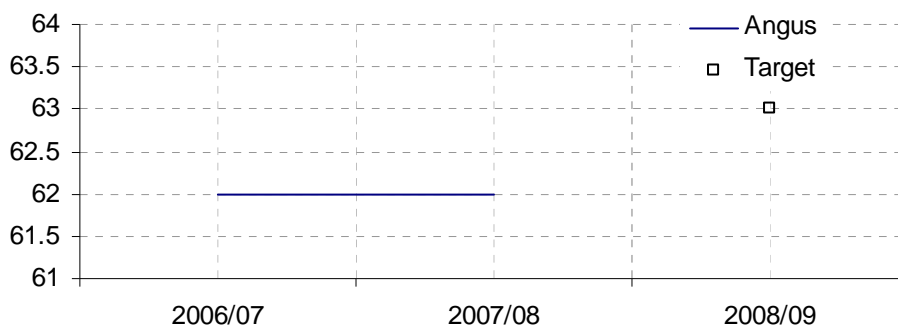
↑ % (3 year averages) of secondary pupils achieving 5-14 level E in Writing by the end of S2

Academic Year	2007/08	2008/09	2009/10
Actual	59	60	
Target			60



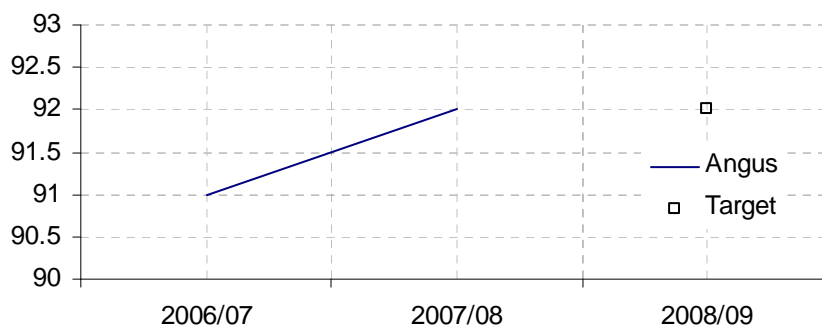
→ % (3 year averages) of secondary pupils achieving 5-14 level E in Maths by the end of S2

Academic Year	2007/08	2008/09	2009/10
Actual	62	62	
Target			63



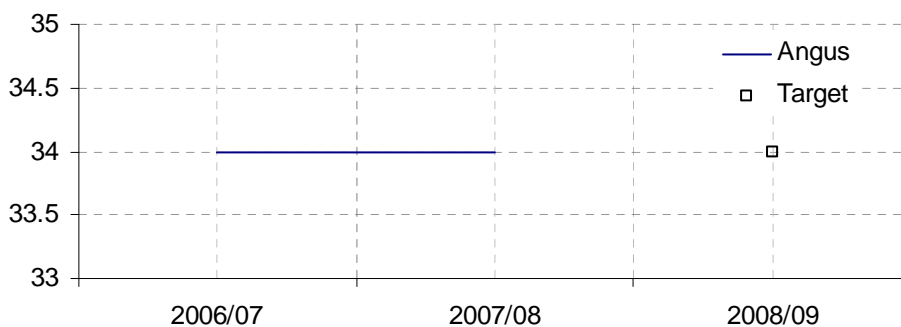
↑ % (3 year averages) of S4 pupils attaining English/Maths at level 3

Academic Year	2007/08	2008/09	2009/10
Actual	91	92	
Target			92



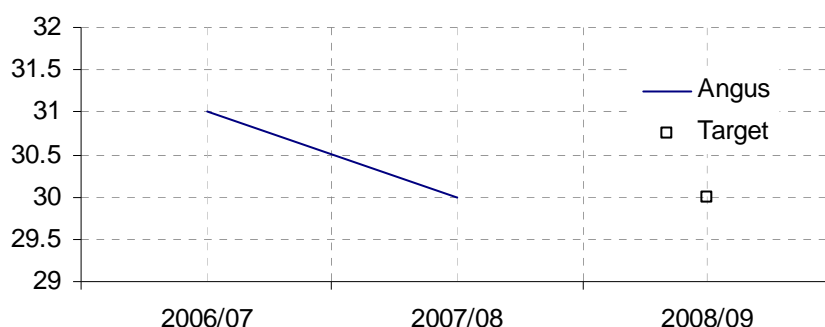
→ % (3 year averages) of S4 pupils attaining 3+ at level 5

Academic Year	2007/08	2008/09	2009/10
Actual	34	34	
Target			34



↓ % (3 year averages) of S6 pupils attaining 3+ at level 6

Academic Year	2007/08	2008/09	2009/10
Actual	31	30	
Target			30



■ % of primary pupils taking part in a music / artistic / cultural activity organised by the school

Academic Year	2008/09	2009/10
Actual	69	
Target		69

■ % of secondary pupils taking part in a music / artistic / cultural activity organised by the school

Academic Year	2008/09	2009/10
Actual	25	
Target		26

■ No. of primary schools meeting 2 hour physical education targets per week

Academic Year	2008/09	2009/10
Actual	65%	
Target		75%

■ No. of secondary schools meeting 2 hour physical education targets per week. Average minutes of physical education per week.

Academic Year	2008/09	2009/10
Actual	103 minutes	
Target		103 minutes

■ Proportion of pre-school and schools receiving positive inspection reports (% of Quality Standards scoring Level 4 and above)

Academic Year	2008/09	2009/10
Actual	100	
Target		100

■ Increase the average tariff score of the lowest attaining 20%

Academic Year	2008/09	2009/10
Actual	53	
Target		53