

## Angus Council Report Card

### Performance Key

Arrows:    **↑** Better    **↓** Worse    **→** No change    **■** Cannot be compared

### **↑** Equalities and Diversity

Further information is available in:

[2010/11 Corporate Services Service Plan](#)

[2010/11 Chief Executive's Service Plan](#)

[Corporate Services Department Annual Report 2009/2010](#) and  
[committee reports containing information on Equalities in 2010](#)

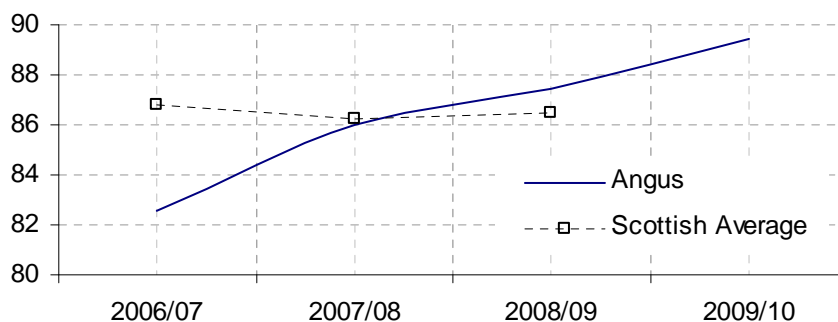
### **↓** % female secondary school heads and deputy heads

|          | 2006/07 | 2007/08 | 2008/09 | 2009/10 |
|----------|---------|---------|---------|---------|
| Angus    | 27.8    | 33.3    | 32.4    | 28.1    |
| Scotland | 38.8    | 40.4    | 43.2    |         |



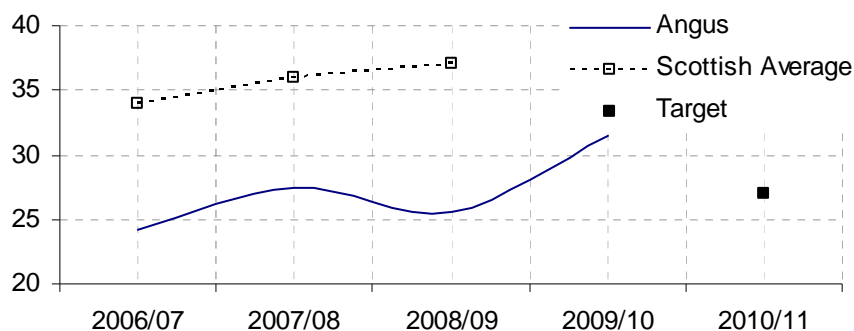
### **↑** % female primary school heads and deputy heads

|          | 2006/07 | 2007/08 | 2008/09 | 2009/10 |
|----------|---------|---------|---------|---------|
| Angus    | 82.6    | 86      | 87.4    | 89.4    |
| Scotland | 86.8    | 86.2    | 86.5    |         |



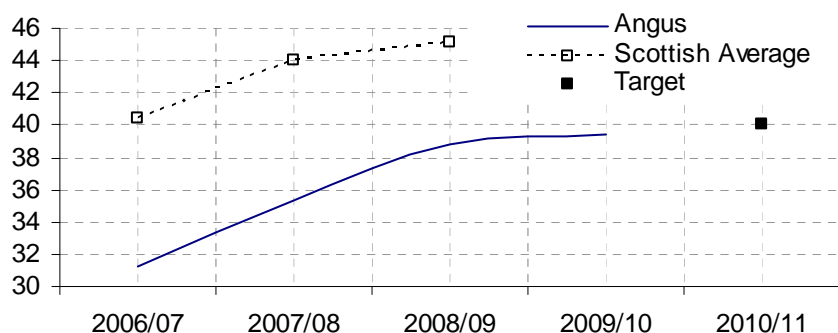
**↑ Percentage of women employees in top 2%**

|          | 2006/07 | 2007/08 | 2008/09 | 2009/10 | 2010/11 |
|----------|---------|---------|---------|---------|---------|
| Angus    | 24.2    | 27.5    | 25.6    | 31.5    |         |
| Scotland | 33.9    | 35.9    | 37.09   |         |         |
| Target   |         |         |         |         | 27      |



**↑ Percentage of women employees in top 5%**

|          | 2006/07 | 2007/08 | 2008/09 | 2009/10 | 2010/11 |
|----------|---------|---------|---------|---------|---------|
| Angus    | 31.3    | 35.3    | 38.86   | 39.4    |         |
| Scotland | 40.4    | 44      | 45.15   |         |         |
| Target   |         |         |         |         | 40      |



**↑ Percentage of buildings from which the council delivers services that are suitable for, and accessible to, disabled people**

|          | 2006/07 | 2007/08 | 2008/09 | 2009/10 | 2010/11 |
|----------|---------|---------|---------|---------|---------|
| Angus    | 79%     | 82.8%   | 87.1%   | 89%     |         |
| Scotland | 51.9%   | 56.6%   | 64.6%   |         |         |
| Target   |         |         |         |         | 91%     |

