

Angus Council Report Card

Performance Key

Arrows: **↑** Better **↓** Worse **→** No change **■** Cannot be compared

↑ Housing and Homelessness

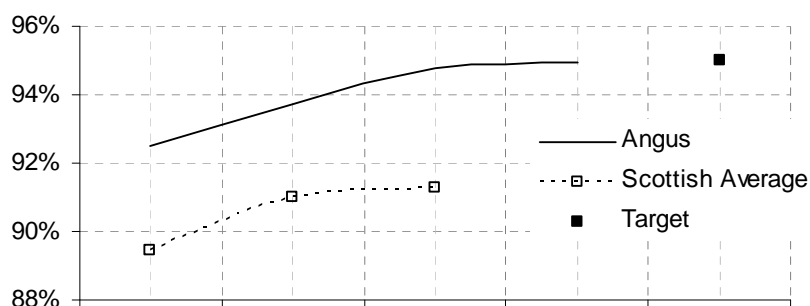
Further information is available in the:

[2010/11 Neighbourhood Services Service Plan](#)

[Neighbourhood Services Department Annual Report 2009/2010](#) and
[committee reports containing information on Housing in 2010](#)

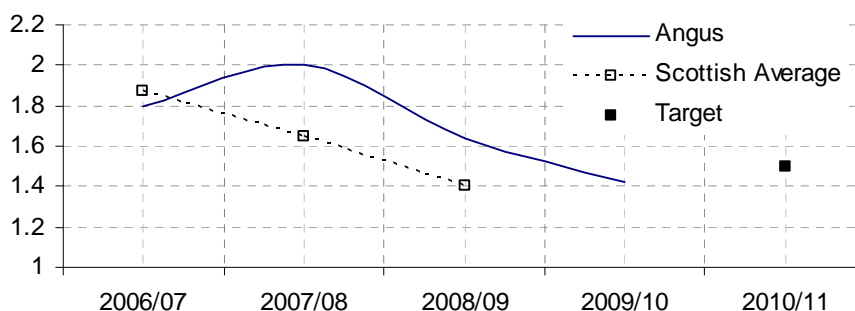
↑ Housing response repairs completed within target time

	2006/07	2007/08	2008/09	2009/10	2010/11
Angus	92.50%	93.70%	94.80%	94.94%	
Scotland	89%	91%	91%		
Target					95%



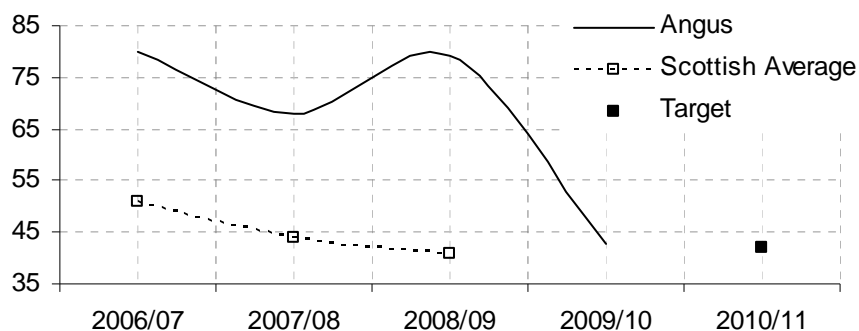
↑ % of rent due in the year that was lost due to voids

	2006/07	2007/08	2008/09	2009/10	2010/11
Angus	1.8	2	1.64	1.43	
Scotland	1.87	1.65	1.4		
Target					1.5



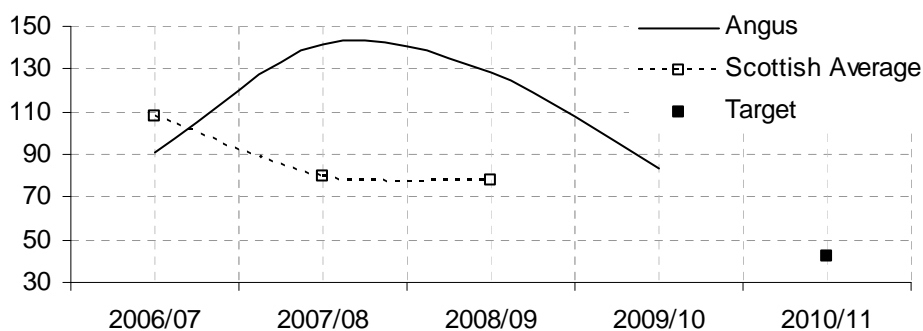
↑ Average re-let times for not low demand stock (days)

	2006/07	2007/08	2008/09	2009/10	2010/11
Angus	80	68	79	42.8	
Scotland	51	44	41		
Target					42



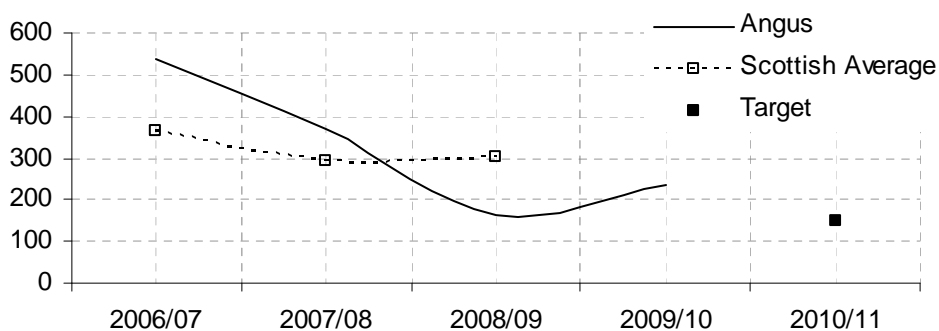
↑ Average re-let times for low demand stock (days)

	2006/07	2007/08	2008/09	2009/10	2010/11
Angus	91	142	128	83.4	
Scotland	108	80	78		
Target					42



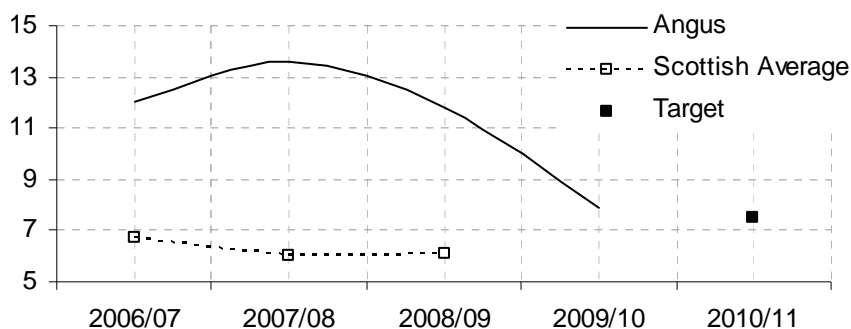
↓ Average days low demand stock un-let at year-end

	2006/07	2007/08	2008/09	2009/10	2010/11
Angus	537	371	163	236.2	
Scotland	364	294	303		
Target					150



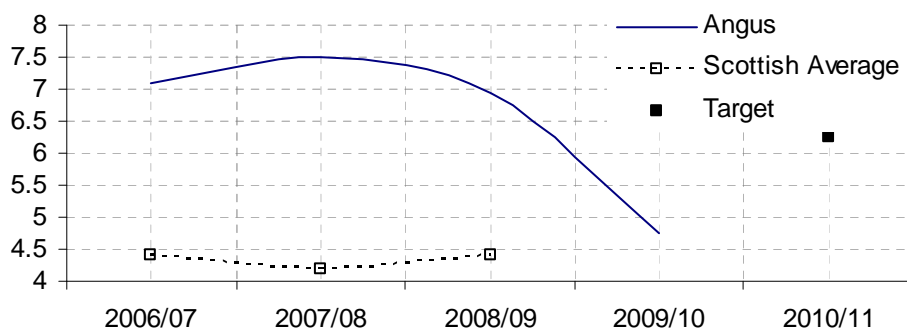
↑ **Current tenant arrears as a % of the net amount of rent due in the year**

	2006/07	2007/08	2008/09	2009/10	2010/11
Angus	12	13.6	11.82	7.9	
Scotland	6.7	6	6.1		
Target					7.5



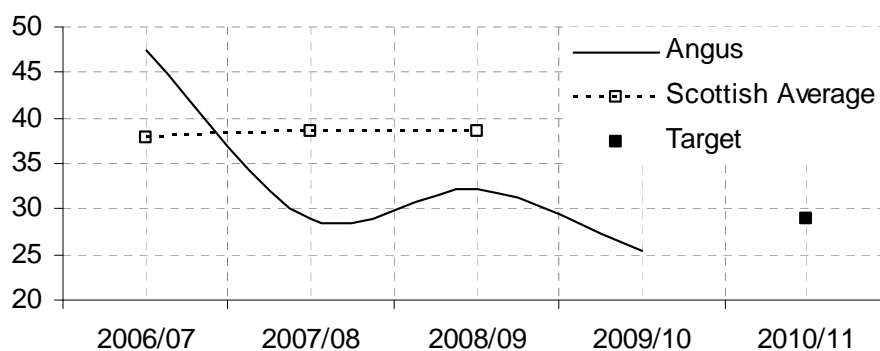
↑ **% of current tenants owing more than 13 weeks rent at year end excluding those owing less than £250**

	2006/07	2007/08	2008/09	2009/10	2010/11
Angus	7.1	7.5	6.95	4.7	
Scotland	4.4	4.2	4.4		
Target					6.25



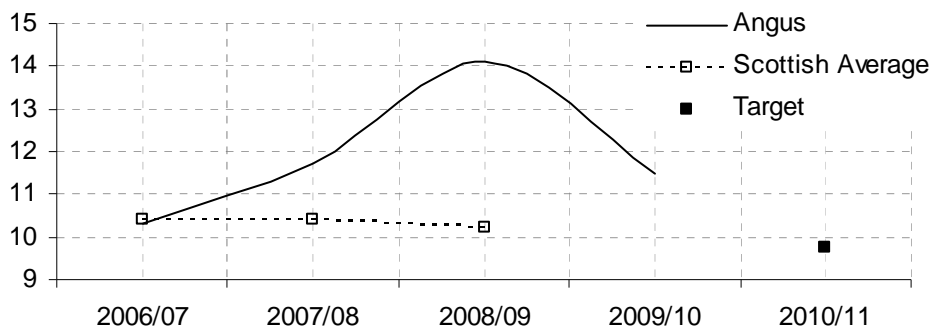
↑ **Proportion of those tenants giving up their tenancy during the year that were in rent arrears**

	2006/07	2007/08	2008/09	2009/10	2010/11
Angus	47.4	29	32.1	25.4	
Scotland	37.9	38.5	38.5		
Target					29



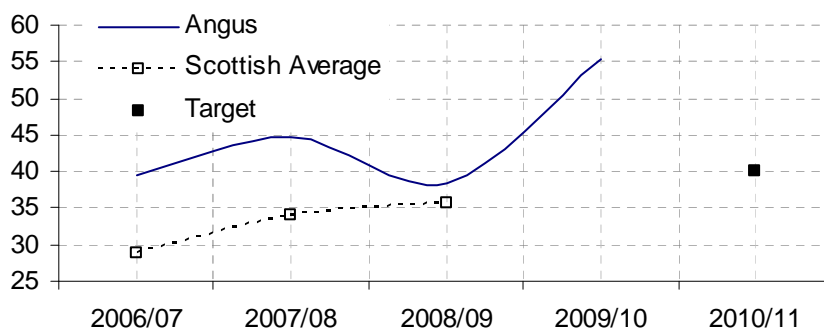
↑ Average debt owed by tenants leaving in arrears as a proportion of the average weekly rent

	2006/07	2007/08	2008/09	2009/10	2010/11
Angus	10.3	11.7	14.1	11.5	
Scotland	10.4	10.4	10.2		
Target					9.75



↑ % of former tenant arrears written off or collected during the year

	2006/07	2007/08	2008/09	2009/10	2010/11
Angus	39.5	44.8	38.3	55.4	
Scotland	28.7	34.1	35.7		
Target					40



→ % of properties meeting Tolerable Standard

	2008/09	2009/10	2010/11
Angus	100%	100%	
Target			100%

→ % of properties free from serious disrepair

	2008/09	2009/10	2010/11
Angus	100%	100%	
Target			100%

↑ % of properties which are energy efficient

	2008/09	2009/10	2010/11
Angus	91.2%	95%	
Target			94%

↑ % of properties with modern facilities and services

	2008/09	2009/10	2010/11
Angus	98.7%	100%	
Target			99.5%

↑ % of properties which are Healthy, Safe and Secure

	2008/09	2009/10	2010/11
Angus	87.8%	88%	
Target			91%

↑ Total dwellings meeting SHQS

	2008/09	2009/10	2010/11
Angus	82.7%	84%	
Target			87.5%

↑ % of decision notifications issued within 28 days of date of initial presentation for permanent accommodation

	2008/09	2009/10	2010/11
Angus	36.9	40.9	
Scotland	74.9		
Target			64

↑ % who are housed into permanent accommodation

	2008/09	2009/10	2010/11
Angus	67.2	70.0	
Scotland	45.4		
Target			69

↑ % of permanent accommodation cases re-assessed

	2008/09	2009/10	2010/11
Angus	3.5	2.1	
Scotland	6.6		
Target			3

↑ % of decision notifications issued within 28 days of date of initial presentation for temporary accommodation

	2008/09	2009/10	2010/11
Angus	27.6	29.5	
Scotland	74		
Target			50

↓ % of temporary accommodation cases re-assessed

	2008/09	2009/10	2010/11
Angus	1.4	2.1	
Scotland	5.5		
Target			1.3

↓ % of those provided with permanent accommodation in council stock who maintained their tenancy for at least 12 months

	2008/09	2009/10	2010/11
Angus	92.9	88.6	
Scotland	86		
Target			94