

Performance Key

Arrows: ↑ Better ↓ Worse → No change ■ Cannot be compared

↑ Adult Social Work

Of the 2007/08 indicators compared with 2006/07, 10 were better, 8 were worse and 3 were unchanged; when compared with Scotland 7 were above average and 14 were below average.

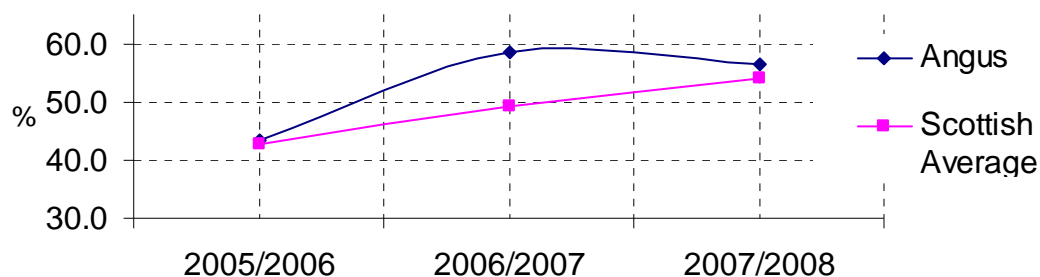
Community care assessments: The average time taken to provide community care services from first identification of need to first service provision.

“Reporting for this indicator was subject to the collation of a wider range of data for reporting to the Scottish Government to meet other requirements. However, after the Direction was given by the Accounts Commission these Scottish Government requirements and data collation arrangements were withdrawn. Consequently, many councils are unable to report the information in 2007/08.”

(Audit Scotland Compendium 2007/08)

↓ **Staff qualifications: The percentage of care staff with appropriate qualifications for the level of post held, working in council residential homes for older people (age 65+)**

Staff Qualifications: Older People

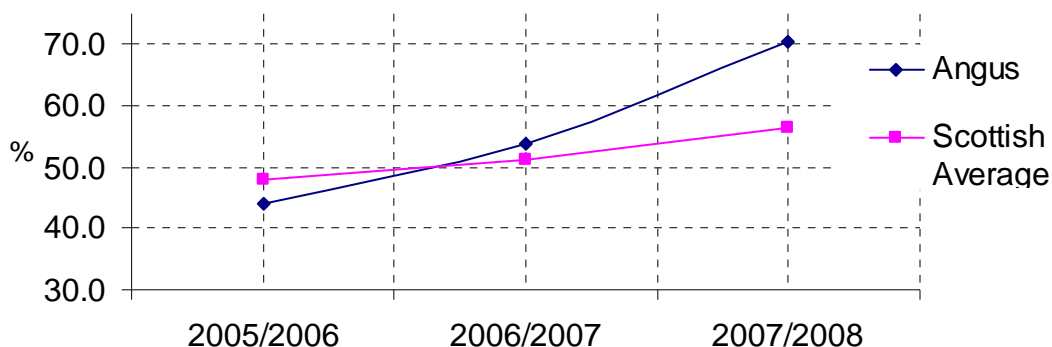


- Performance for this indicator declined in 2007/08.
- Angus Council performance was better than the Scottish average.
- We are among the bottom half of Scottish councils who reported data for this indicator.

	2005/06	2006/07	2007/08
Angus	43.5	58.6	56.3
Scottish Average	42.5	49.0	53.9
Scottish Median	47.9	51.8	56.8

↑ Staff qualifications: The percentage of care staff with appropriate qualifications for the level of post held, working in council residential homes for other adults

Staff Qualifications: Other People

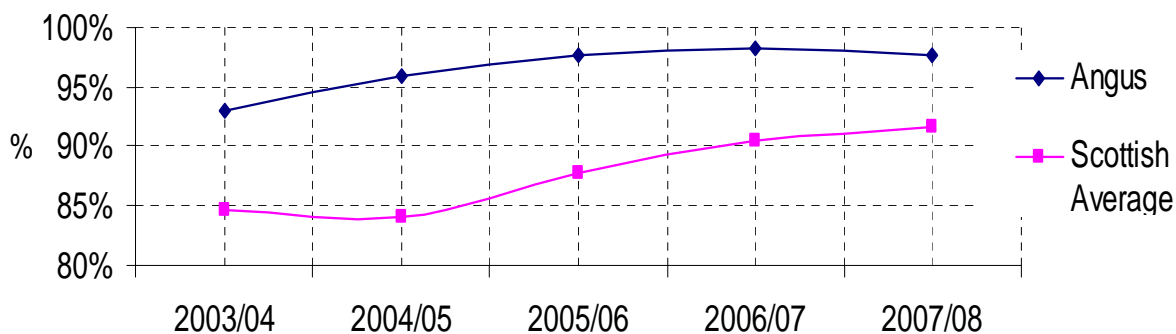


- Performance for this indicator improved in 2007/08.
- Angus Council performance was better than the Scottish average.
- We are among the top half of Scottish councils who reported data for this indicator.

	2005/06	2006/07	2007/08
Angus	43.9	53.7	70.3
Scottish Average	48.0	51.1	56.4
Scottish Median	50.0	54.9	56.3

↓ Privacy: The number of single rooms as a percentage of registered care places used by the council for older people (age 65+)

percentage of single rooms used by the council for older people

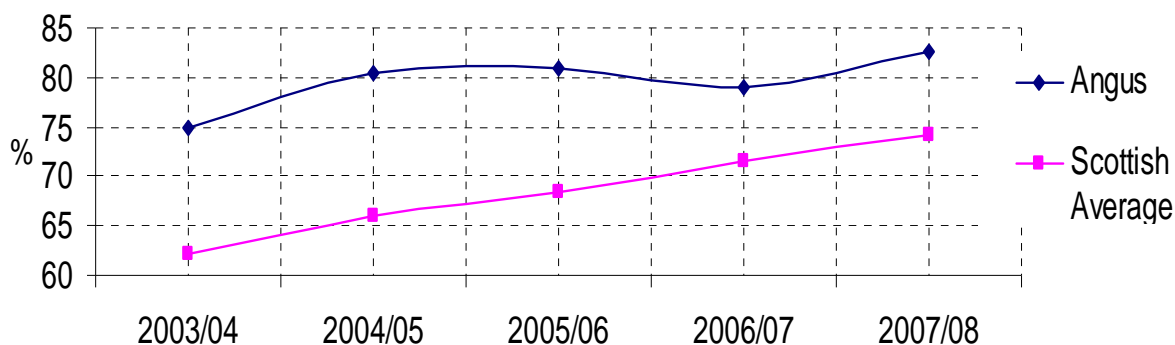


- Performance for this indicator declined in 2007/08.
- Angus Council performance was better than the Scottish average.
- We are among the top half of Scottish councils who reported data for this indicator.

	2003/04	2004/05	2005/06	2006/07	2007/08
Angus	93.06	95.86	97.61	98.21	97.75
Scottish Average	84.60	84.10	87.70	90.40	91.70
Scottish Median	88.1	88.7	90.7	91.8	92.9

↑ Privacy: The number of rooms with en-suite facilities, expressed as a percentage of registered care places used by the council for older people (age 65+)

% of places used by the council for older people that have en-suite facilities

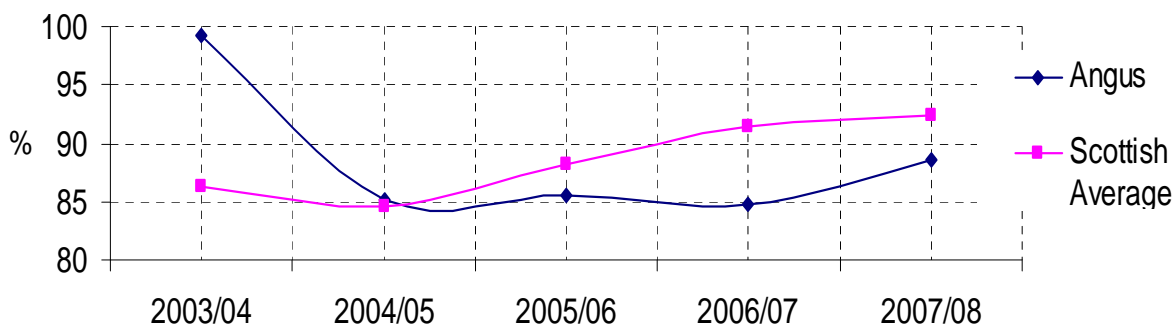


- Performance for this indicator improved in 2007/08.
- Angus Council performance was better than the Scottish average.
- We are among the top half of Scottish councils who reported data for this indicator.

	2003/04	2004/05	2005/06	2006/07	2007/08
Angus	75.0	80.5	80.8	78.9	82.7
Scottish Average	62.1	66.1	68.4	71.5	74.3
Scottish Median	60.2	64.4	69.2	72.1	73.2

↑ Privacy: The number of single rooms expressed as a percentage of registered care places used by the council for other adults

percentage of single rooms used by the council for other adults

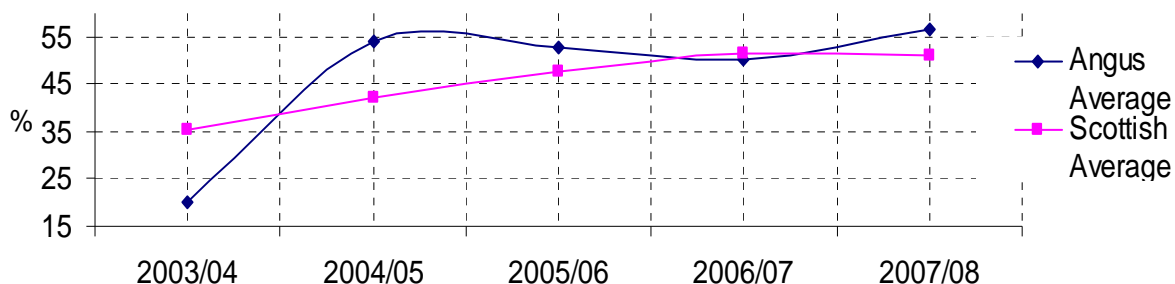


- Performance for this indicator improved in 2007/08.
- Angus Council performance was not as good as the Scottish average.
- We are among the bottom half of Scottish councils who reported data for this indicator.

	2003/04	2004/05	2005/06	2006/07	2007/08
Angus	99.2	85.2	85.6	84.8	88.6
Scottish Average	86.2	84.6	88.2	91.5	92.3
Scottish Median	91.8	92.9	93.5	96.2	95.6

↑ Privacy: The number of rooms with en-suite facilities, expressed as a percentage of registered care places used by the council for other adults

% of places used by the council for other adults that have en-suite facilities

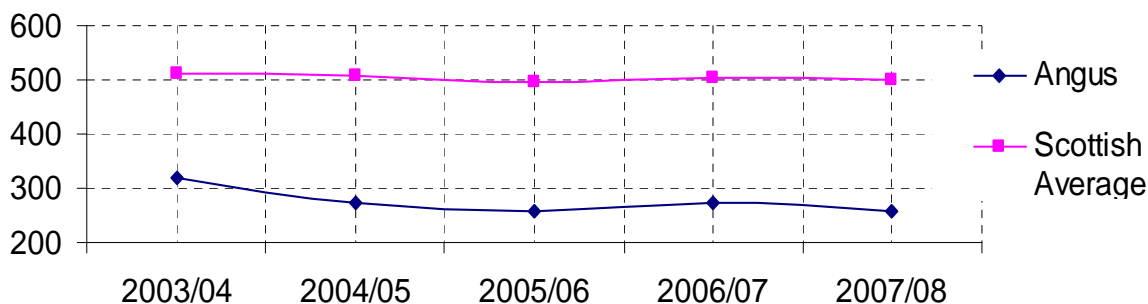


- Performance for this indicator improved in 2007/08.
- Angus Council performance was better than the Scottish average.
- We are among the top half of Scottish councils who reported data for this indicator.

	2003/04	2004/05	2005/06	2006/07	2007/08
Angus	20.3	54.1	52.8	50.4	56.8
Scottish Average	35.2	42.2	47.5	51.6	51.2
Scottish Median	31.3	35.7	45.8	49.2	52.6

↓ Home care - total hours as a rate per 1,000 population aged 65+

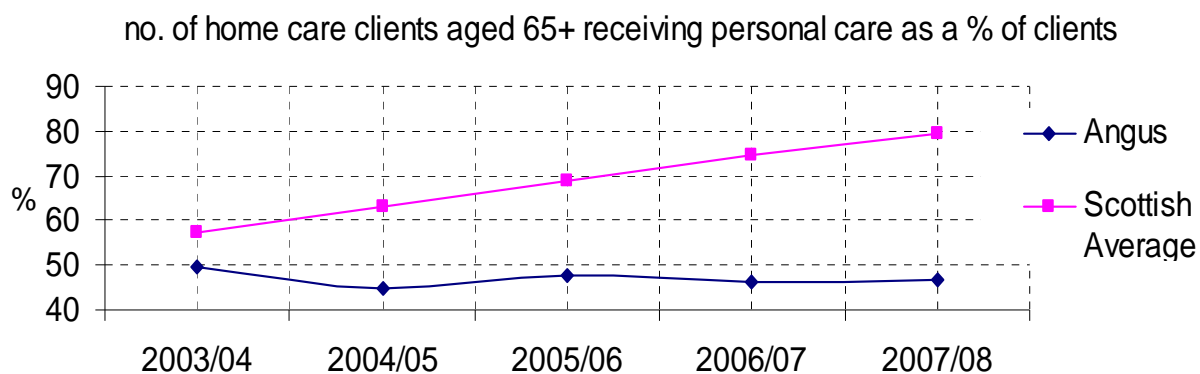
Home care - total hours as a rate per 1,000 population aged 65+



- Performance for this indicator declined in 2007/08.
- Angus Council performance was not as good as the Scottish average.
- We are among the bottom half of Scottish councils who reported data for this indicator.

	2003/04	2004/05	2005/06	2006/07	2007/08
Angus	320.2	274.7	259.3	273.5	257.9
Scottish Average	512.2	509.6	495.5	504.3	500.7
Scottish Median	525.1	502.5	492.0	491.9	467.6

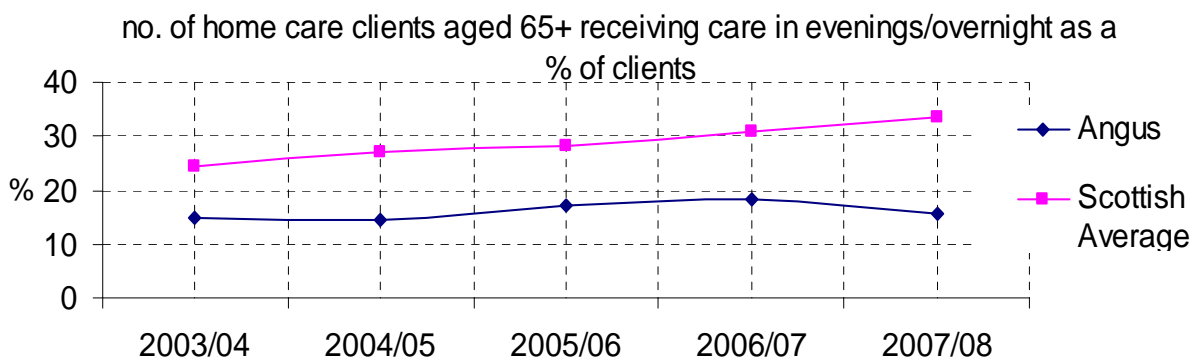
↑ Number of home care clients aged 65+ receiving personal care as a percentage of clients



- Performance for this indicator improved in 2007/08.
- Angus Council performance was not as good as the Scottish average.
- We are among the bottom half of Scottish councils who reported data for this indicator.

	2003/04	2004/05	2005/06	2006/07	2007/08
Angus	49.5	44.6	47.6	46.1	46.5
Scottish Average	57.2	63.0	68.7	74.6	79.2
Scottish Median	60.7	64.4	70.4	75.7	81.6

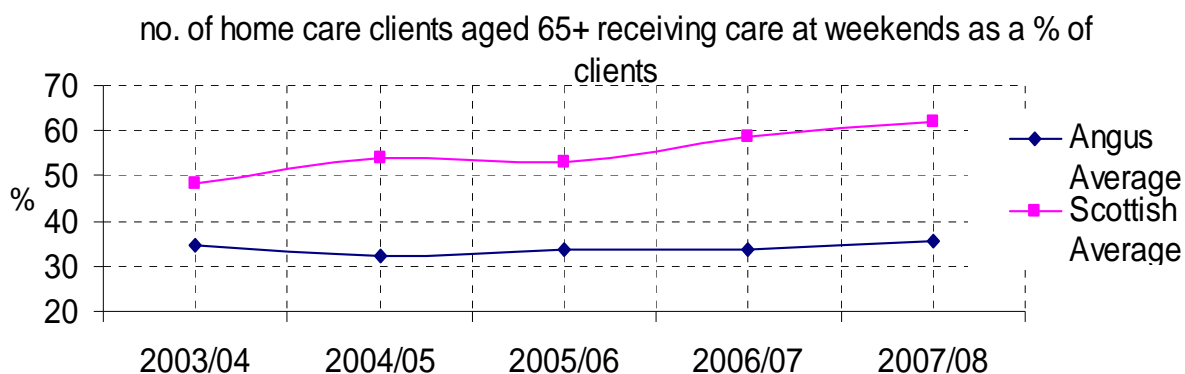
↓ Number of home care clients aged 65+ receiving care in evenings/overnight as a percentage of clients



- Performance for this indicator declined in 2007/08.
- Angus Council performance was not as good as the Scottish average.
- We are among the bottom half of Scottish councils who reported data for this indicator.

	2003/04	2004/05	2005/06	2006/07	2007/08
Angus	14.9	14.3	17.3	18.4	15.7
Scottish Average	24.3	27.2	28.1	30.7	33.5
Scottish Median	23.4	25.7	26.3	28.3	30.9

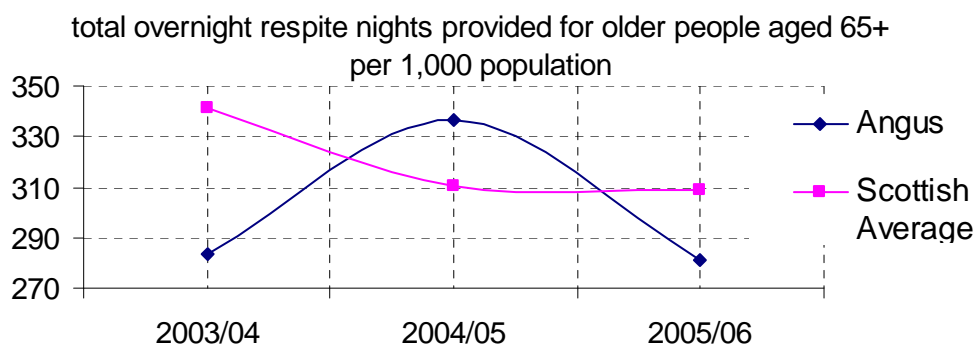
↑ Number of home care clients aged 65+ receiving care at weekends as a percentage of clients



- Performance for this indicator improved in 2007/08.
- Angus Council performance was not as good as the Scottish average.
- We are among the bottom half of Scottish councils who reported data for this indicator.

	2003/04	2004/05	2005/06	2006/07	2007/08
Angus	34.4	32.2	33.6	33.5	35.8
Scottish Average	48.3	53.9	52.9	58.7	61.9
Scottish Median	48.2	52.5	55.3	55.8	63.4

↓ Total overnight respite nights provided for older people aged 65+ per 1,000 population

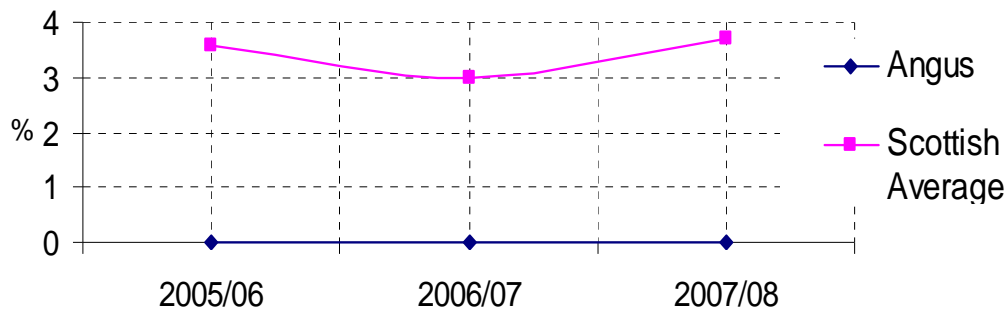


- Performance for this indicator declined in 2007/08.
- Angus Council performance was not as good as the Scottish average.
- We are among the bottom half of Scottish councils who reported data for this indicator.

	2005/06	2006/07	2007/08
Angus	283.5	336.4	281.2
Scottish Average	341.6	310.1	308.5
Scottish Median	366.4	327.1	298.0

➔ **Percentage of respite nights not in a care home aged 65+**

percentage of respite nights not in a care home aged 65+



- Performance for this indicator did not change in 2007/08.
- Angus Council performance was not as good as the Scottish average.
- We are among the bottom half of Scottish councils who reported data for this indicator.

	2005/06	2006/07	2007/08
Angus	0.0	0.0	0.0
Scottish Average	3.6	3.0	3.7
Scottish Median	0.5	1.0	1.3

⬆ **Total daytime respite hours provided for people aged 65+ per 1,000 population**

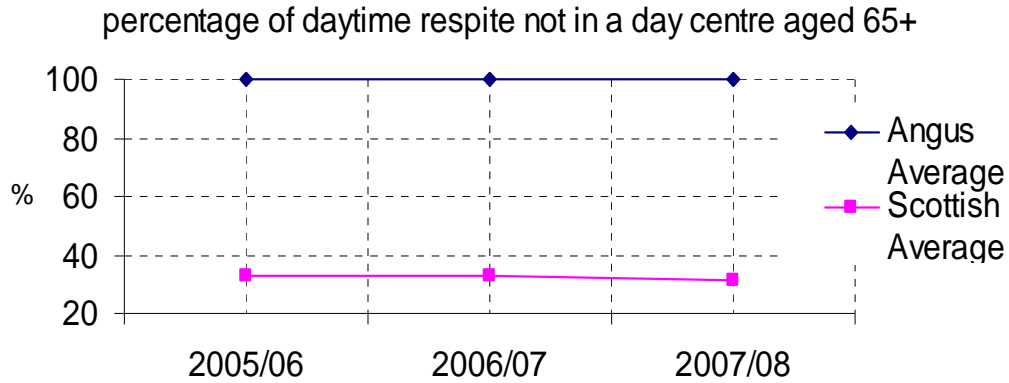
total daytime respite hours provided for people aged 65+ per 1,000 population



- Performance for this indicator improved in 2007/08.
- Angus Council performance was not as good as the Scottish average.
- We are among the bottom half of Scottish councils who reported data for this indicator.

	2005/06	2006/07	2007/08
Angus	578.5	848.9	1237.2
Scottish Average	2708.4	3167.8	3400.2
Scottish Median	1346.6	2056.0	2417.6

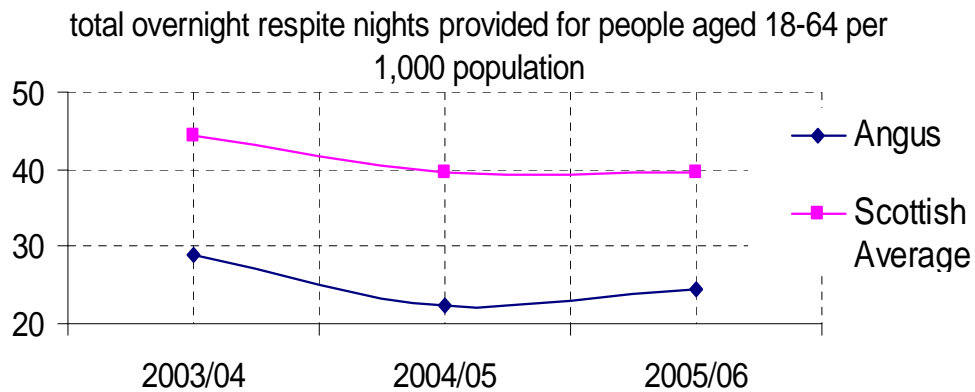
➔ **Percentage of daytime respite not in a day centre aged 65+**



- Performance for this indicator did not change in 2007/08.
- Angus Council performance was better than the Scottish average.
- We are among the top half of Scottish councils who reported data for this indicator.

	2005/06	2006/07	2007/08
Angus	100.0	100.0	100.0
Scottish Average	33.0	33.1	31.3
Scottish Median	36.3	45.2	48.6

⬆ **Total overnight respite nights provided per 1,000 population**

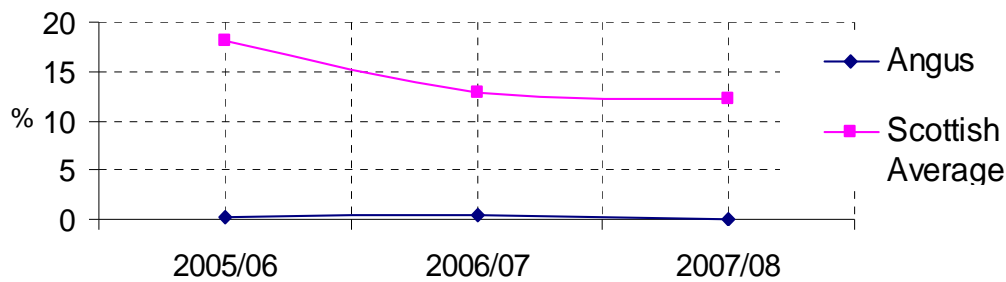


- Performance for this indicator improved in 2007/08.
- Angus Council performance was not as good as the Scottish average.
- We are among the bottom half of Scottish councils who reported data for this indicator.

	2005/06	2006/07	2007/08
Angus	29	22.5	24.6
Scottish Average	44.5	39.5	39.7
Scottish Median	42.9	39.2	41.5

↓ **Percentage of respite nights not in a care home aged 18-64**

percentage of respite nights not in a care home aged 18-64

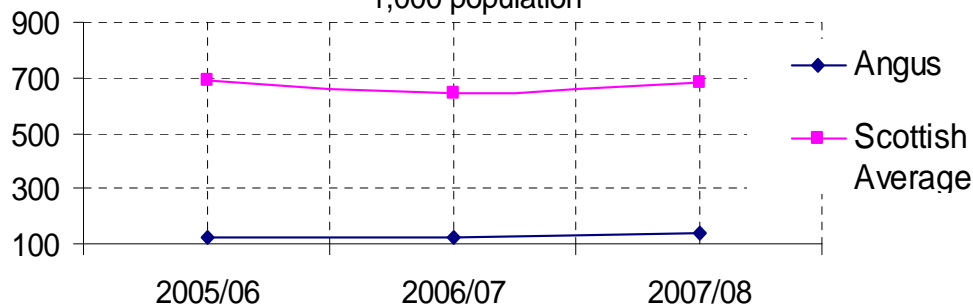


- Performance for this indicator declined in 2007/08.
- Angus Council performance was not as good as the Scottish average.
- We are among the bottom half of Scottish councils who reported data for this indicator.

	2005/06	2006/07	2007/08
Angus	0.2	0.4	0.0
Scottish Average	18.1	12.9	12.3
Scottish Median	9.3	4.4	4.3

↑ **Total daytime respite hours provided for people aged 18-64 per 1,000 population**

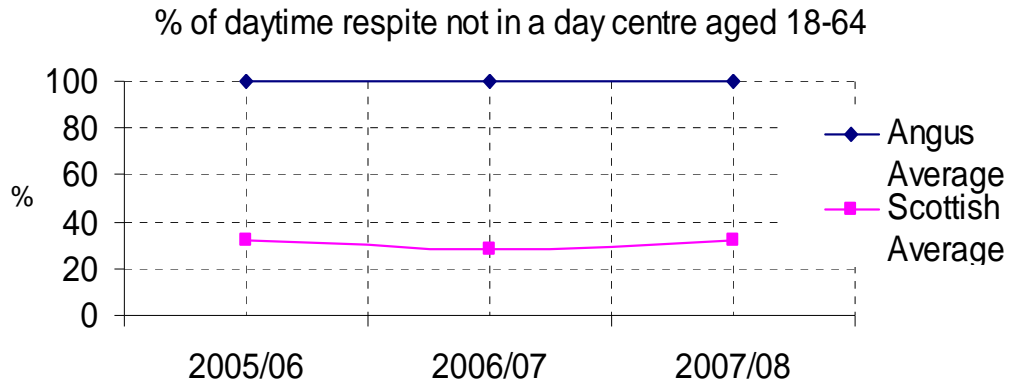
total daytime respite hours provided for people aged 18-64 per 1,000 population



- Performance for this indicator improved in 2007/08.
- Angus Council performance was not as good as the Scottish average.
- We are among the bottom half of Scottish councils who reported data for this indicator.

	2005/06	2006/07	2007/08
Angus	123.1	119.7	141.4
Scottish Average	692.3	645.6	682.7
Scottish Median	202.5	239.6	314.8

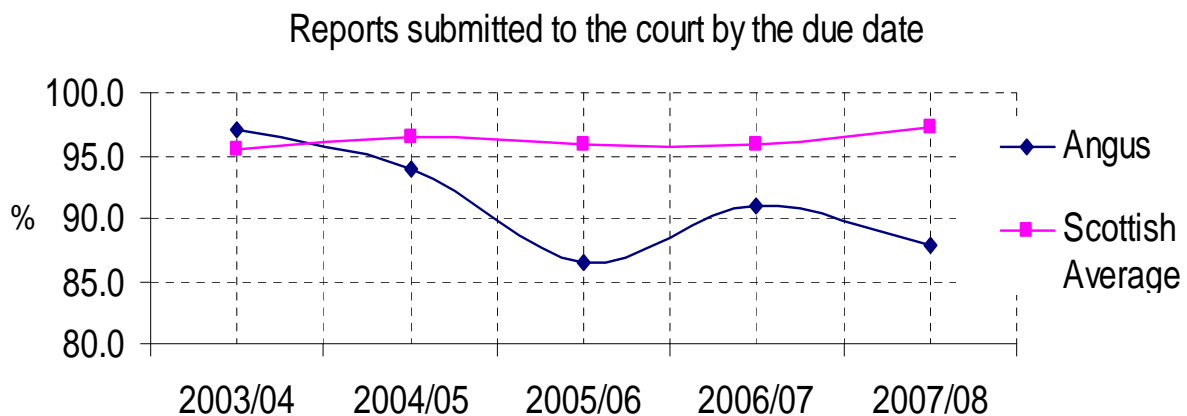
➔ **Percentage of daytime respite not in a day centre aged 18-64**



- Performance for this indicator did not change in 2007/08.
- Angus Council performance was better than the Scottish average.
- We are among the top half of Scottish councils who reported data for this indicator.

	2005/06	2006/07	2007/08
Angus	100.0	100.0	100.0
Scottish Average	32.0	28.3	32.3
Scottish Median	44.2	60.4	63.9

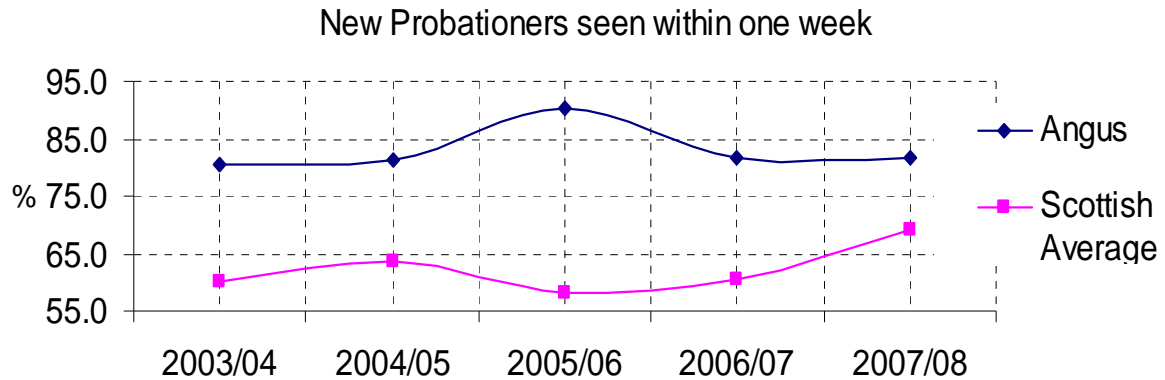
↓ **Proportion of social enquiry reports submitted by the social work department to the courts by the due date**



- Performance for this indicator declined in 2007/08.
- Angus Council performance was not as good as the Scottish average.
- We are among the bottom half of Scottish councils who reported data for this indicator.

	2003/04	2004/05	2005/06	2006/07	2007/08
Angus	97.1	94.0	86.4	90.9	87.9
Scottish Average	95.5	96.5	95.9	95.9	97.3
Scottish Median	98.9	98.6	98.7	98.7	98.7

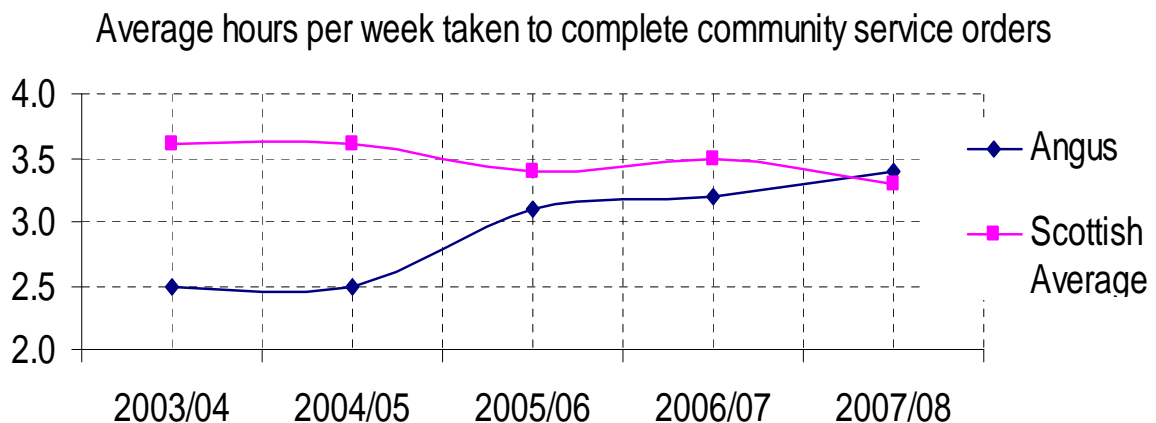
↓ Proportion of new probationers seen by a supervising officer within one week



- Performance for this indicator declined in 2007/08.
- Angus Council performance was better than the Scottish average.
- We are among the top half of Scottish councils who reported data for this indicator.

	2003/04	2004/05	2005/06	2006/07	2007/08
Angus	80.4	81.2	90.3	81.6	81.5
Scottish Average	60.0	63.5	58.3	60.4	69.3
Scottish Median	80.7	77.1	78.8	78.0	79.2

↑ Average hours per week taken to complete community service orders



- Performance for this indicator improved in 2007/08.
- Angus Council performance was better than the Scottish average.
- We are among the bottom half of Scottish councils who reported data for this indicator.

	2003/04	2004/05	2005/06	2006/07	2007/08
Angus	2.5	2.5	3.1	3.2	3.4
Scottish Average	3.6	3.6	3.4	3.5	3.3
Scottish Median	3.8	3.7	3.5	3.5	3.5