

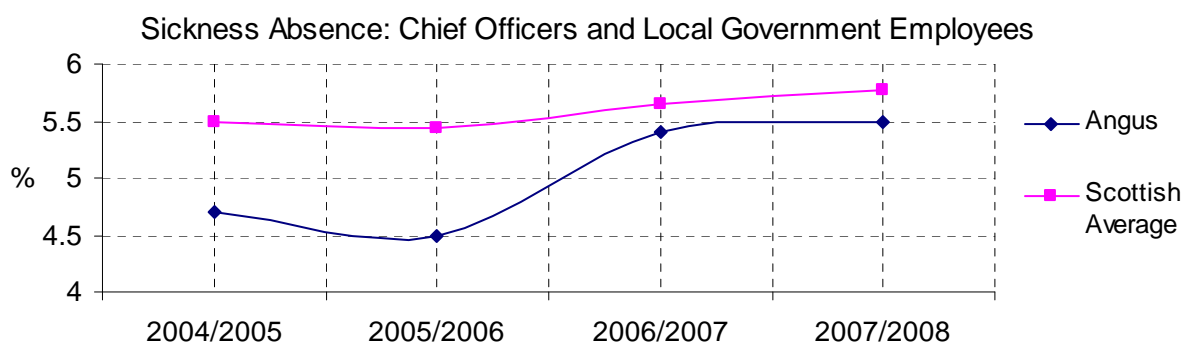
## Performance Key

Arrows:    ↑ Better    ↓ Worse    → No change    ■ Cannot be compared

### ↑ Corporate Management

Of the 2007/08 indicators compared with 2006/07, 10 were better, 1 was unchanged and 2 were worse; when compared with Scotland 9 were above average and 4 were below average.

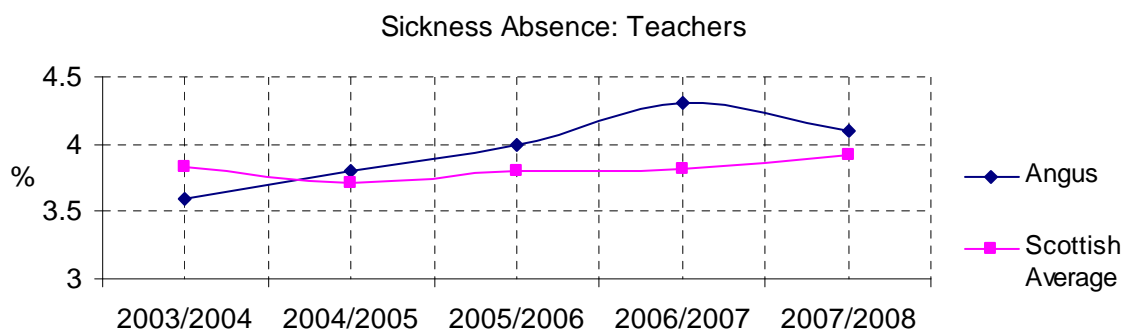
### ↓ Number of days lost through sickness absence expressed as a percentage of total working days available for Chief Officers and local government employees



- Performance for this indicator declined in 2007/08.
- Angus Council performance was better than the Scottish average.
- We are among the top half of Scottish councils who reported data for this indicator.

	2004/2005	2005/2006	2006/2007	2007/2008
Angus	4.7	4.5	5.4	5.5
Scottish Average	5.5	5.4	5.6	5.8
Scottish Median	5.5	5.5	5.7	5.7

### ↑ Number of days lost through sickness absence expressed as a percentage of total working days available for Teachers

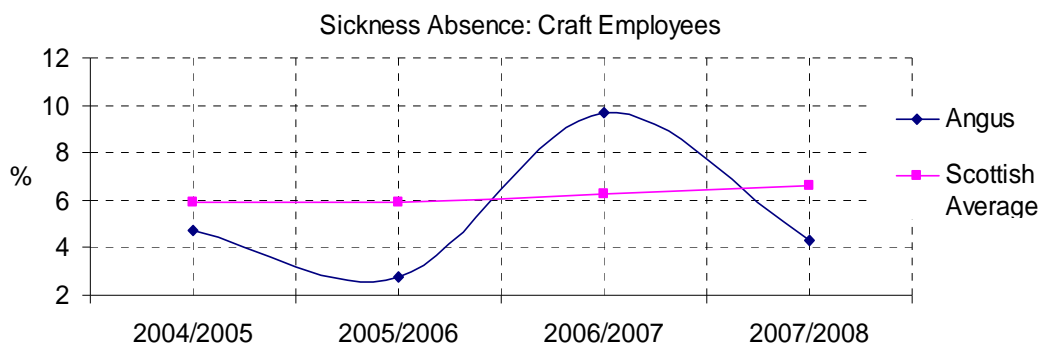


- Performance for this indicator improved in 2007/08.
- Angus Council performance was not as good as the Scottish average.
- We are among the bottom half of Scottish councils who reported data for this indicator.

	2003/04	2004/05	2005/06	2006/07	2007/08
Angus	3.6	3.8	4	4.3	4.1
Scottish Average	3.8	3.7	3.8	3.8	3.9
Scottish Median	3.9	3.7	3.8	3.9	3.8

Note. The revised figure of 4.1% was identified following a review of the data.

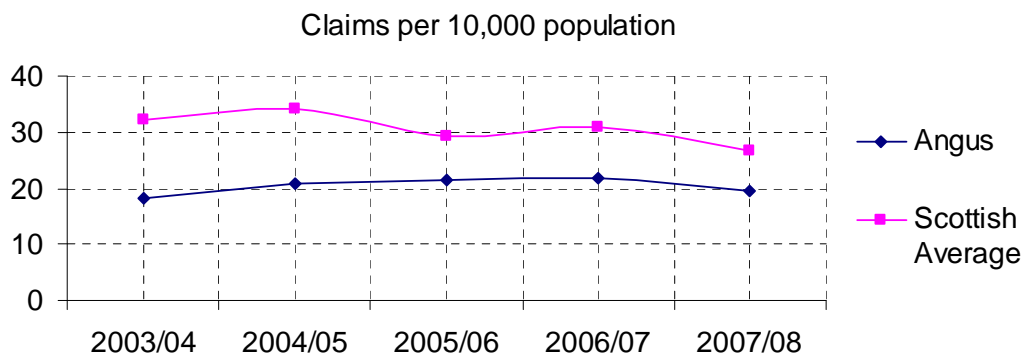
**↑ Number of days lost through sickness absence expressed as a percentage of total working days available for craft employees.**



- Performance for this indicator improved in 2007/08.
- Angus Council performance was better than the Scottish average.
- We are among the top half of Scottish councils who reported data for this indicator.

	2004/2005	2005/2006	2006/2007	2007/2008
Angus	4.7	2.8	9.7	4.3
Scottish Average	5.9	5.9	6.3	6.6
Scottish Median	5.8	5.8	6.3	5.1

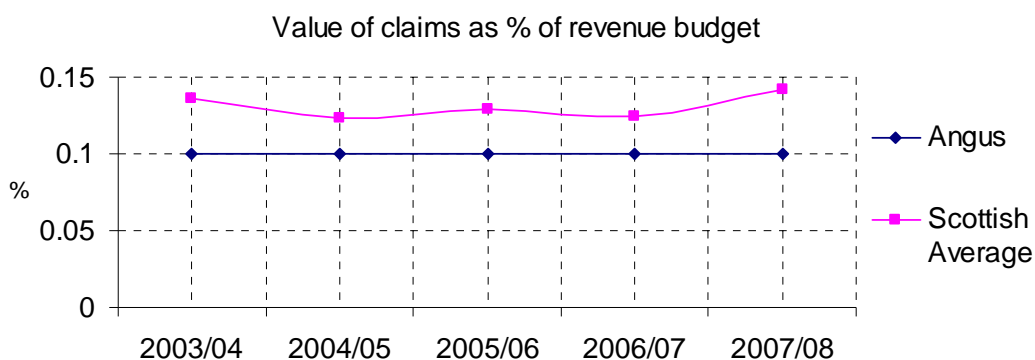
**↑ The number of civil liability claims incurred by the council in the year per 10,000 population**



- Performance for this indicator improved in 2007/08.
- Angus Council performance was better than the Scottish average.
- We are among the top half of Scottish councils who reported data for this indicator.

	2003/04	2004/05	2005/06	2006/07	2007/08
Angus	18.1	20.8	21.6	21.7	19.5
Scottish Average	32.1	34.0	29.3	30.9	26.8
Scottish Median	27.4	27.1	27.4	31.1	28.1

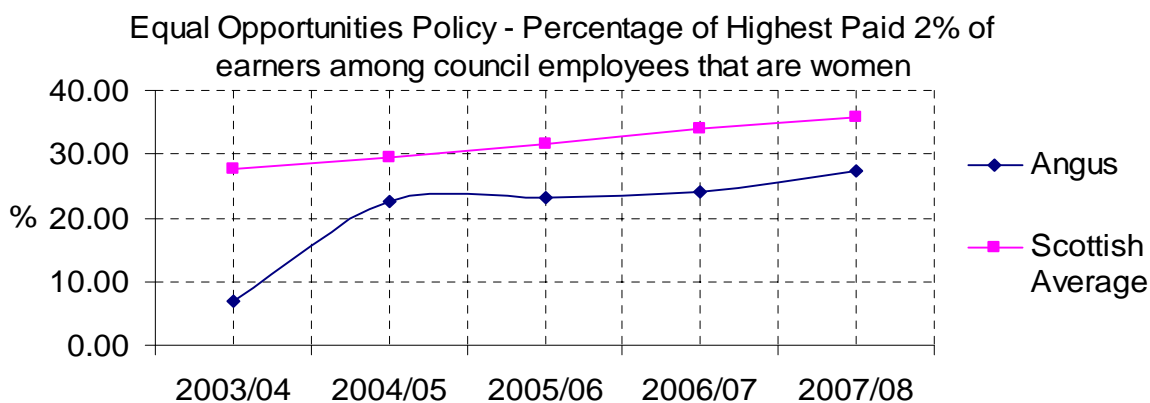
➔ The value of civil liability claims incurred by the council in the year as a percentage of revenue budget



- Performance for this indicator did not change in 2007/08.
- Angus Council performance was better than the Scottish average.

	2003/04	2004/05	2005/06	2006/07	2007/08
Angus	0.1	0.1	0.1	0.1	0.1
Scottish Average	0.14	0.12	0.13	0.12	0.14

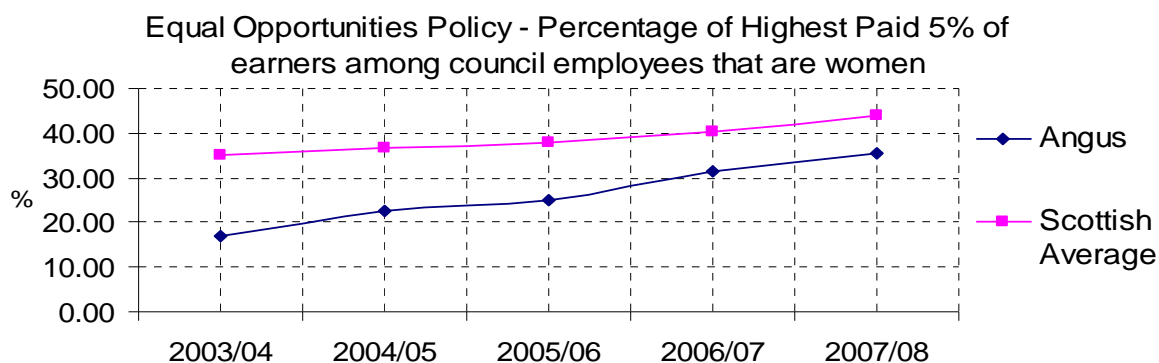
⬆ The percentage of the highest paid 2% of earners among council employees that are women



- Performance for this indicator improved in 2007/08.
- Angus Council performance was not as good as the Scottish average.
- We are among the bottom half of Scottish councils who reported data for this indicator.

	2003/04	2004/05	2005/06	2006/07	2007/08
Angus	7.00	22.70	23.20	24.20	27.50
Scottish Average	27.60	29.60	31.70	33.90	35.90
Scottish Median	27.3	28.8	31.3	32.6	34.3

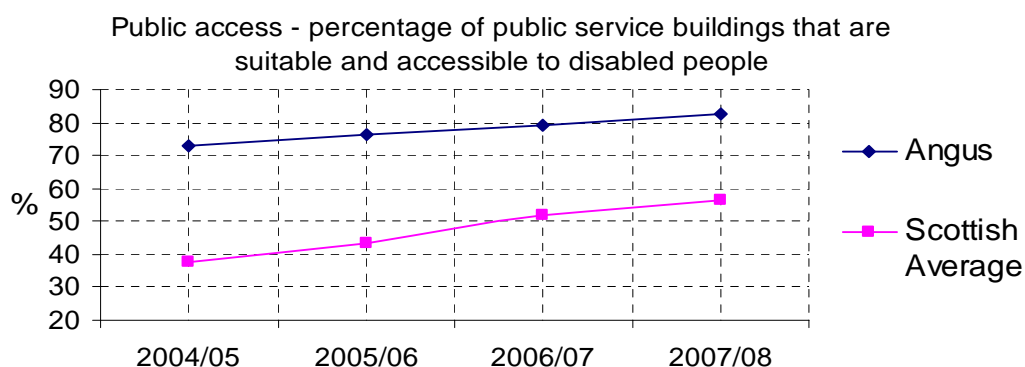
**↑ The percentage of the highest paid 5% of earners among council employees that are women**



- Performance for this indicator improved in 2007/08.
- Angus Council performance was not as good as the Scottish average.
- We are among the bottom half of Scottish councils who reported data for this indicator.

	2003/04	2004/05	2005/06	2006/07	2007/08
Angus	16.80	22.70	25.00	31.30	35.30
Scottish Average	35.00	36.60	38.00	40.40	44.00
Scottish Median	34.5	34.5	36.7	39.3	43.3

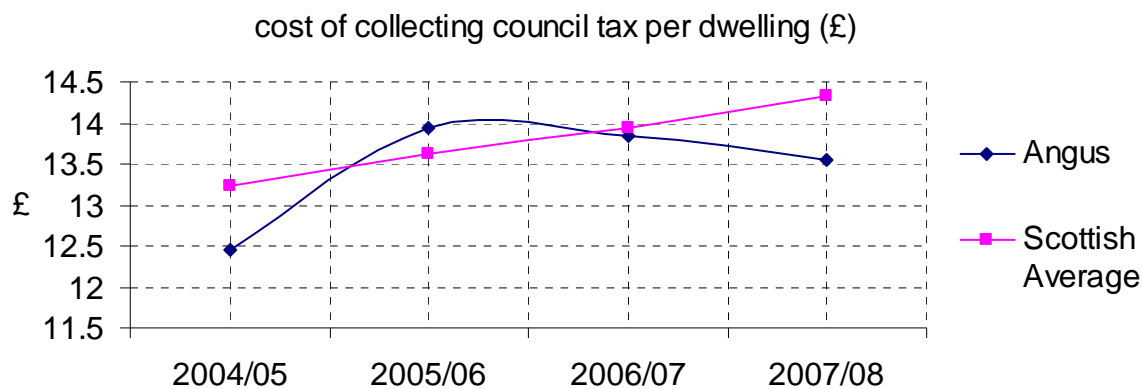
**↑ Percentage of buildings from which the council delivers services that are suitable for, and accessible to, disabled people**



- Performance for this indicator improved in 2007/08.
- Angus Council performance was better than the Scottish average.
- We are among the top half of Scottish councils who reported data for this indicator.

	2004/05	2005/06	2006/07	2007/08
Angus	72.9	76.2	79	82.8
Scottish Average	37.4	43.4	51.9	56.6
Scottish Median	38.2	52.3	61.3	63.6

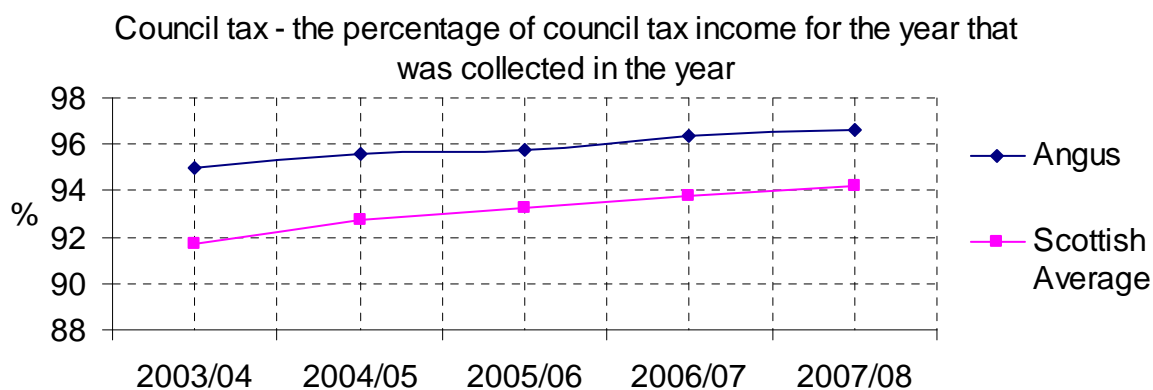
↑ **Cost of collecting council tax per dwelling (£)**



- Performance for this indicator improved in 2007/08.
- Angus Council performance was better than the Scottish average.

	2004/05	2005/06	2006/07	2007/08
Angus	12.46	13.95	13.85	13.54
Scottish Average	13.23	13.62	13.95	14.33

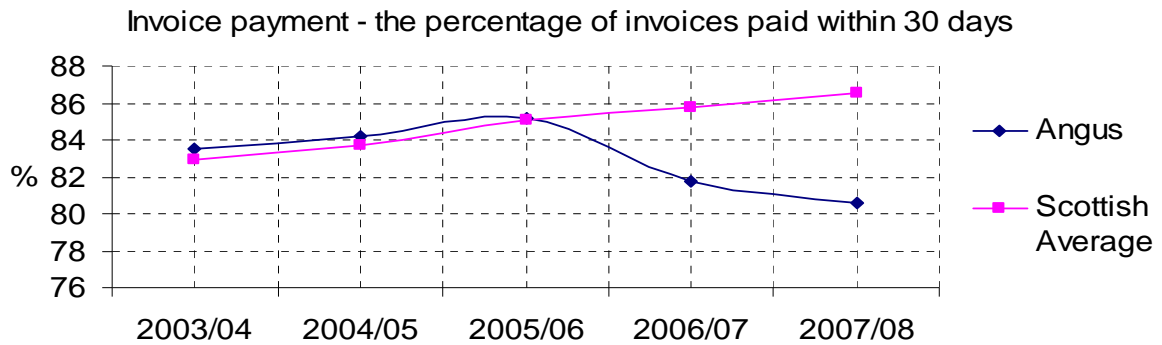
↑ **Percentage of income due from council tax for the year that was received by the end of the year**



- Performance for this indicator improved in 2007/08.
- Angus Council performance was better than the Scottish average.

	2003/04	2004/05	2005/06	2006/07	2007/08
Angus	95.00	95.60	95.80	96.40	96.60
Scottish Average	91.70	92.70	93.30	93.80	94.20

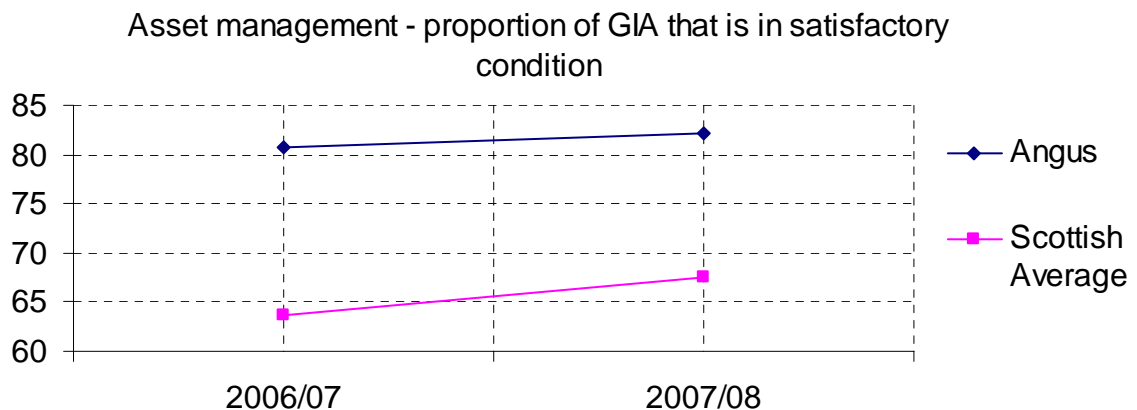
↓ **Percentage of invoices sampled and paid within 30 days**



- Performance for this indicator declined in 2007/08.
- Angus Council performance was not as good as the Scottish average.
- We are among the bottom half of Scottish councils who reported data for this indicator.

	2003/04	2004/05	2005/06	2006/07	2007/08
Angus	83.5	84.2	85.2	81.8	80.6
Scottish Average	82.9	83.7	85.1	85.8	86.5
Scottish Median	83.0	84.2	85.0	85.6	86.3

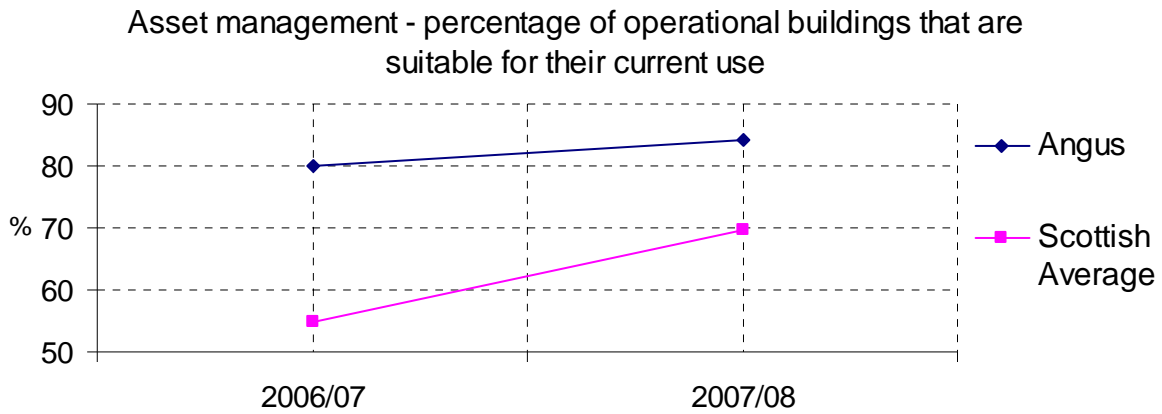
↑ **Proportion of gross internal floor area of operational buildings that is in satisfactory condition**



- Performance for this indicator improved in 2007/08.
- Angus Council performance was better than the Scottish average.
- We are among the top half of Scottish councils who reported data for this indicator.

	2006/07	2007/08
Angus	80.8	82.1
Scottish Average	63.6	67.6
Scottish Median	64.9	73.5

↑ **Percentage of operational buildings that are suitable for their current use**



- Performance for this indicator improved in 2007/08.
- Angus Council performance was better than the Scottish average.
- We are among the top half of Scottish councils who reported data for this indicator.

	2006/07	2007/08
Angus	80.00	84.20
Scottish Average	54.70	69.70
Scottish Median	70.5	75.3