

# State of the Environment Report for Angus 2006

Angus Environment Forum



**THE STATE OF THE  
ENVIRONMENT REPORT  
FOR ANGUS 2006**

**Produced by the Angus Environment Forum**

## CONTENTS

	<b>Page</b>
Summary	4
Introduction	5
Background	5
The Angus Environment	8
 <b>SECTION ONE – The Natural and Building Environment</b>	
1. Total amount of Vacant and Derelict Land (hectares)	10
2. New Development Split Between Greenfield and Brownfield Sites (Housing and Industry)	12
3. Area of Protected/Key Habitats, e.g. Sites of Special Scientific Interest etc. (hectares)	14
4. Area Designated as Country Parks (hectares)	17
5. Area (in hectares) of Managed Green Space for Leisure	18
6. Visitor Numbers to Key/Selected Sites	19
7. Number of Reported Vandalism Incidents	20
8. Area Managed Under Environmental Schemes and Organic Farming *	21
9. Area Covered by Forest and by Forest Type *	22
10. Scheduled Ancient Monuments in Angus	25
11. Listed Buildings in Angus	26
 <b>SECTION TWO – Waste</b>	
12. Percentage of Total Household Waste Recycled	27
13. Household Waste Generated Per Year	28
 <b>SECTION THREE – Energy</b>	
14. Energy Use Per Household	29
 <b>SECTION FOUR – Travel and Transport</b>	
15. Overall Traffic Volumes	31
16. Mode of Travel to Work in Angus *	32
17. Percentage of Angus Households within Six Minutes Walk of a Bus Service *	33
18. How Children Travel to School/Walking Buses	35
19. Dedicated Cycle Lanes in Angus	36
20. Length of Paths	37
 <b>SECTION FIVE – Air</b>	
21. Air Quality Monitoring	38
 <b>SECTION SIX – Water</b>	
22. Water Supply	42
23. Bathing Water Quality	44
24. Coastal Water Quality	45
25. Rivers of Good or Fair Quality	46
26. Number of properties Affected by Flood Incidents *	48
 <b>SECTION SEVEN – Pollution</b>	
27. Total Amount of “Potentially” Contaminated Land (hectares)	50
28. Nitrate Vulnerable Zones	51

	<b>Page</b>
<b>SECTION EIGHT – Public Perception</b>	
29. Public Concern About Noise	53
30. Satisfaction with the Quality of Surroundings *	55
• Appendix I : List of Information Sources	56
• Appendix II : Glossary	57
• Appendix III : Water Framework Directive	59
* Denotes no update	

## SUMMARY

This is the second State of the Environment Report for Angus which begins the process of identifying trends in each of the Indicators. The overall picture remains one of a good quality local environment.

The rivers and coastal waters are mostly rated excellent/good despite a large part of the area being designated a Nitrate Vulnerable Zone. Air quality remains generally good although the number of complaints about air quality at one point rose but have now levelled off.

Household waste recycling continues to increase and there is also an improving situation as regards the fall in the total amount of waste generated. On the down side traffic volumes and the number of complaints about noise continue to increase.

In the last report reference was made to ecological footprinting. This is a measure of how much nature we have, how much nature we use. WWF commissioned the Stockholm Environment Institute to calculate the ecological footprint of each Local Authority area in Scotland which is quoted as global hectares per person. The 'fair' share is estimated to be 1.8 hectares but our ecological footprint is larger as we are using natural resources more quickly than they replenish.

The world average Ecological Footprint is 2.2 global hectares per person but in the U.K. we have a footprint of 5.4 global hectares per person. This same method gives Angus a footprint of 5.3 global hectares per person. Despite being lower than the U.K. average it shows we have a considerable way to go to reduce our ecological footprint to a more equitable level.

For further information about ecological footprinting please see the Council's website on [www.angus.gov.uk/localagenda21](http://www.angus.gov.uk/localagenda21) or contact Infrastructure Services, St. James House, St. James Road, Forfar, telephone 01307-461460 or visit [www.wwf.org.uk](http://www.wwf.org.uk)

Representatives of the following organisations who make up the Angus Environment Forum compiled this report:-

Angus Council  
Scottish Environment Protection Agency  
Scottish Water  
Scottish Natural Heritage  
Communities Scotland



# THE STATE OF THE ENVIRONMENT REPORT FOR ANGUS 2006

## Introduction

Welcome to the second State of the Environment Report for Angus. The data contained in this document has been drawn together by the Angus Environment Forum. The Angus Environment Forum were established in 2003 after the Sustainable Development Seminar hosted by Angus Council in Arbroath and includes representatives from:-

- Angus Council
- The Scottish Environment Protection Agency
- Scottish Water
- Scottish Natural Heritage
- Communities Scotland

The State of the Environment Report for Angus draws together data and statistics which are already collected and are therefore, readily available. Wherever possible, data for a few years has been used to illustrate trends over time. However, more recently collected data may not have a history and trends for those datasets will develop over time. Supplementary text has been kept to a minimum and just provides brief background information wherever this is available.

The report is divided into eight sections looking at statistics regarding the natural and built environment, waste, energy, travel and transport, air, water, pollution and public perception.

The aim of the document is to collect together information to illustrate our impact on the environment by using the available environmental data to create an overall picture of the state of the environment in Angus. It is envisaged that over time the type of data collected will grow and incorporate more information on social and economic issues. It will help steer the future actions of Angus Community Planning partners and demonstrate how this might be done, i.e. addressing the increasing noise complaints, tackling declining biodiversity; improving the rate of recycling.

## Background

*“Angus will be a place where a first class quality of life for all can be enjoyed in vibrant towns and pleasant villages set in attractive and productive countryside. The area will be dynamic and outward looking contributing to the culture, environment and economy of Scotland”.*

The above is a vision of Angus quoted from the Angus Community Plan and the Local Agenda 21 Strategy. Sustainable Development is one of the main principles guiding the Community Plan with the environment and quality of life forming one of the five main topics within the plan. Working groups from the Community Planning Partnership were set up to tackle the various topics within the plan and the Angus Environment Forum was formed to facilitate joint working in relation to the environment.

The Forum comprises representatives of Angus Council, Communities Scotland, Scottish Environment Protection Agency, Scottish Natural Heritage and Scottish Water. Through this document the Forum aims to raise awareness of the importance of safeguarding the environment and indicate the progress made in improving the natural environment in Angus. The Forum welcomes comments on the content of this document.

## INDICATOR SUMMARY

The list below provides a quick overview of the Indicators showing the changes which have occurred since the First State of the Environment Report for Angus.

### Key

- |             |  |
|-------------|--|
| ↑ Improving | — No discernable change or trend unclear |
| ↓ Worsening | ○ No update                              |

Number	Topic	Trend
1	Total amount of Vacant and Derelict Land (Hectares)	↑
2	New Development split between Greenfield and Brownfield Sites (Housing and Industry)	↑
3	Area of Protected/Key Habitats, e.g. Sites of Special Scientific Interest, etc. (Hectares)	—
4	Area Designated as Country Parks (Hectares)	—
5	Area (in Hectares) of Managed Green Space for Leisure	—
6	Visitor Numbers to Key/Selected Sites	—
7	Number of Reported Vandalism Incidents	↑
8	Area Managed Under Agricultural/environmental Schemes and Organic Farming	○
9	Area Covered by Forest and by Forest Type	○
10	Scheduled Ancient Monuments in Angus	—
11	Listed Buildings in Angus	—
12	Percentage of Total Household Waste Recycled	↑
13	Household Waste Generated Per Year (Metric Tonnes)	↑
14	Energy Use Per Household	↑
15	Overall Traffic Volumes	↓
16	Mode of Travel to Work in Angus	○
17	Percentage of Angus Households within Six Minutes Walk of a Bus Service	○
18	How Children Travel to School/Walking Bus	↑
19	Dedicated Cycle Lanes in Angus	↑
20	Lengths of Paths	↑
21	Air Quality Monitoring	↓
22	Water Supply	↑
23	Bathing Water Quality	↑
24	Coastal Water Quality	—

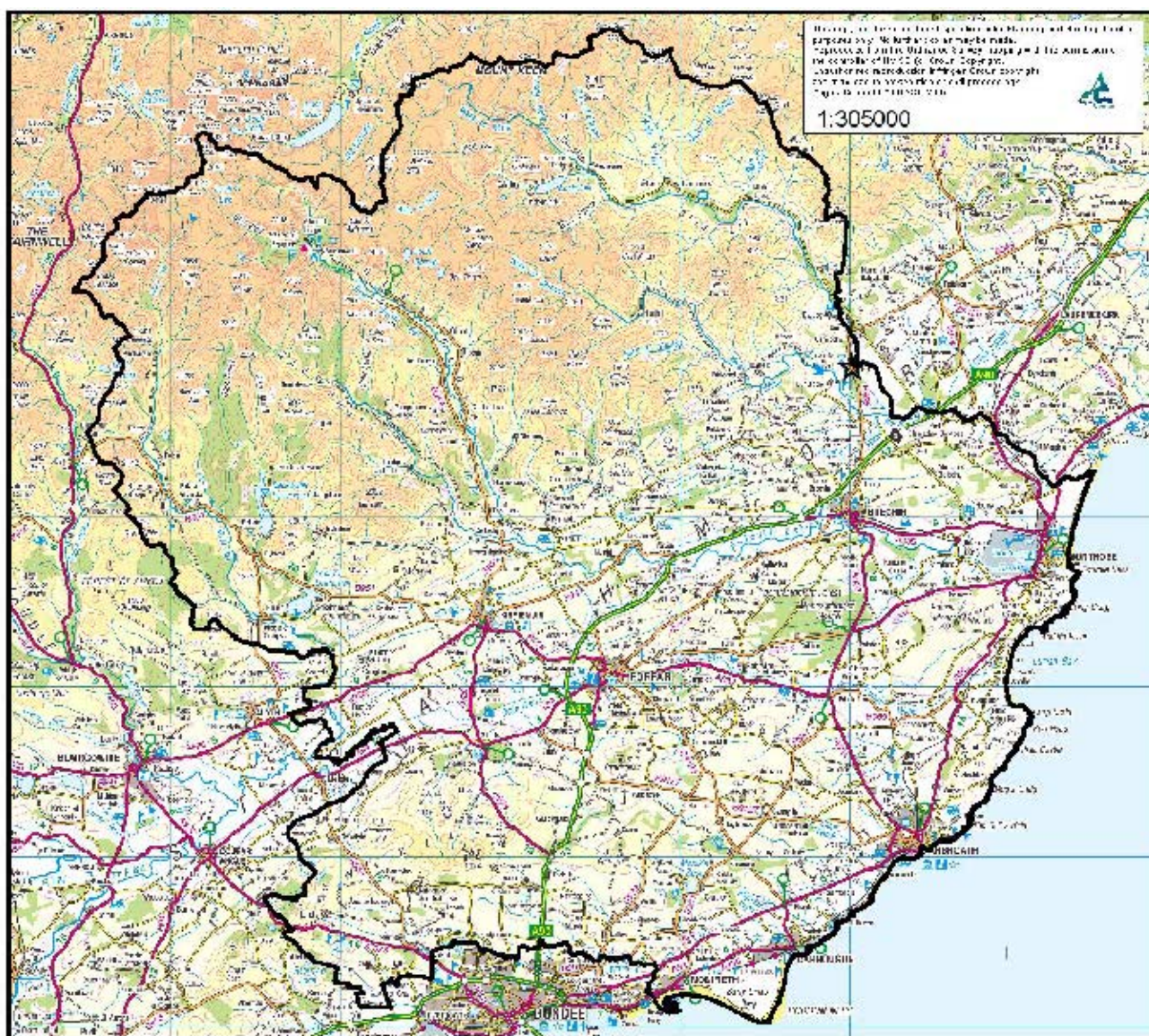
<b>Number</b>	<b>Topic</b>	<b>Trend</b>
25	Rivers of Good or Fair Quality	↑
26	Number of Properties Affected by Flood Incidents	○
27	Total Amount of “Potentially” Contaminated Land (Hectares)	—
28	Nitrate Vulnerable Zones	—
29	Public Concern About Noise	↓
30	Satisfaction with the Quality of Surroundings	○

## THE ANGUS ENVIRONMENT

Angus lies midway along the eastern coastline of Scotland and covers an area of 200,000 hectares with a resident population of 108,370 (Angus Local Plan 2003: Consultative Draft). It comprises a network of towns and villages set in a diverse and productive countryside area, which extends from the coast into the Glens that penetrate the Grampian Mountains. The three broad areas (Coast, Strathmore and The Glens) vary markedly in their geographic make-up, land use and population base.

Maintaining the high quality of the environment in Angus, as well as the productive nature and diversity of the natural heritage of the rural and coastal areas, is of prime importance. In addition, the historic, cultural and archaeological heritage needs to be protected and enhanced and the vitality and viability of the town centres maintained.

The Angus Environment Forum has an important role to play in maintaining and enhancing the environment of Angus and it is hoped that this document will provide a starting point towards improving the quality of life for present and future generations of people living and working Angus.



## **The Coastal Area**

The Coastal Area provides a major transport corridor with the A92 road (currently being upgraded to a dual carriageway) and the east coast rail line. The commercial harbour facilities at Montrose provide access to national and international markets. The area comprises an attractive and varied coastline, providing an important agricultural hinterland. It contains almost two-thirds of the Angus population, the bulk of who are located in the towns of Arbroath (with almost 24,00 population, the largest in Angus), Montrose, Carnoustie and Monifieth (on the very edge of Dundee).

## **The Strathmore Valley**

The valley of Strathmore is a broad and fertile agricultural strath or vale accommodating more than one-third of the Angus population, principally in the market towns of Forfar, Brechin and Kirriemuir. Whilst agriculture and related industry remain important, manufacturing and the service sector, provide a variety of employment opportunities. The A90 trunk road linking Edinburgh and Dundee with Aberdeen runs through Strathmore.

## **The Glens**

The Glens and the highland area cover the land north and west of the Highland Boundary fault line covering almost one-third of the total area of Angus, it takes the form of a plateau cut deeply with five main glens – Isla, Prosen, Clova, Lethnot and Esk. With less than 3% of the total Angus population, no major centres of population, and an economy predominately estate and farm based, this major upland area, including extensive areas of heather moorland, is regarded as fragile. Recognised for its high scenic, landscape and environmental quality, the Angus Glens do, however, provide for wide range of recreational and tourist activities. The quality of the landscape is reflected of part of the Glens in the Cairngorms National Park.

## SECTION ONE : THE NATURAL AND BUILT ENVIRONMENT

### 1. Total Amount of Vacant and Derelict Land (hectares)

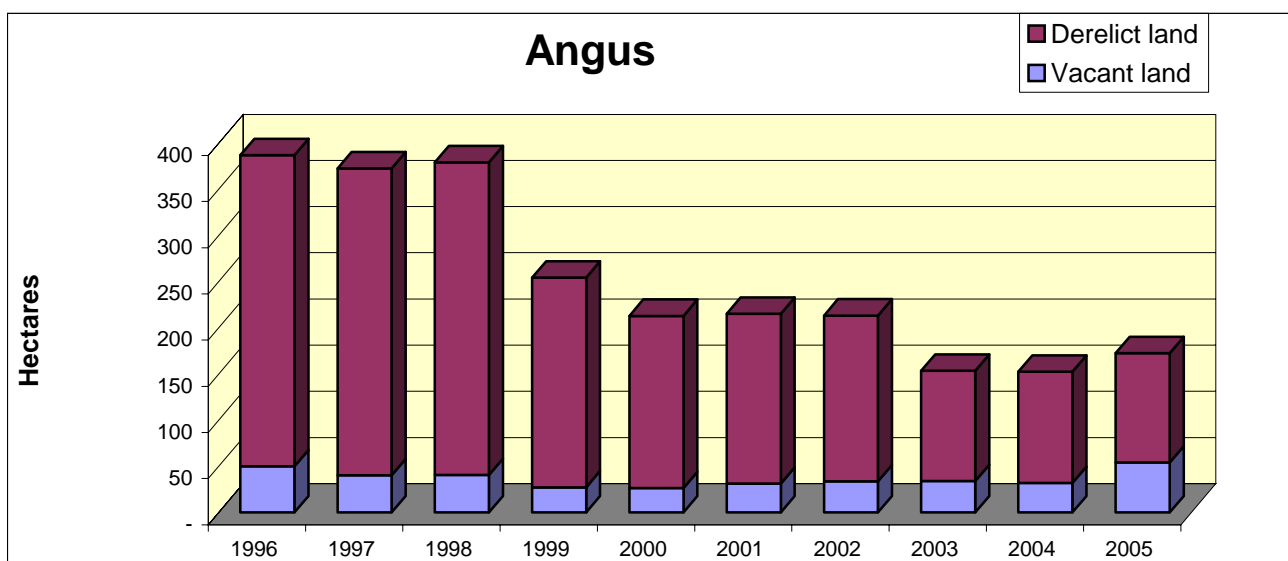
#### Why this Indicator is Important

Dereliction and vacant properties may be symptoms of wider problems, but can themselves promote a spiral of degradation. Reclamation of derelict land can help to revitalise local environments. On the other hand, some vacant and seemingly derelict areas can provide a haven for wildlife and therefore in environmental terms, represent a positive contribution to biodiversity - however unsightly they may seem to the casual onlooker.

Whilst in Scotland as a whole, the area of vacant and derelict land has marginally increased (+0.4%) between 2004 and 2005, in Angus it has increased significantly by 13.1%. However this is not as negative as it may appear. This increase was almost entirely on one site, Orchardbank, and represents the remainder of the site formerly in agricultural use but now vacant and waiting development. Between 2004 and 2005, 8 sites (9.31ha) were removed from the list, leaving a total of 172.37ha of vacant and derelict land.

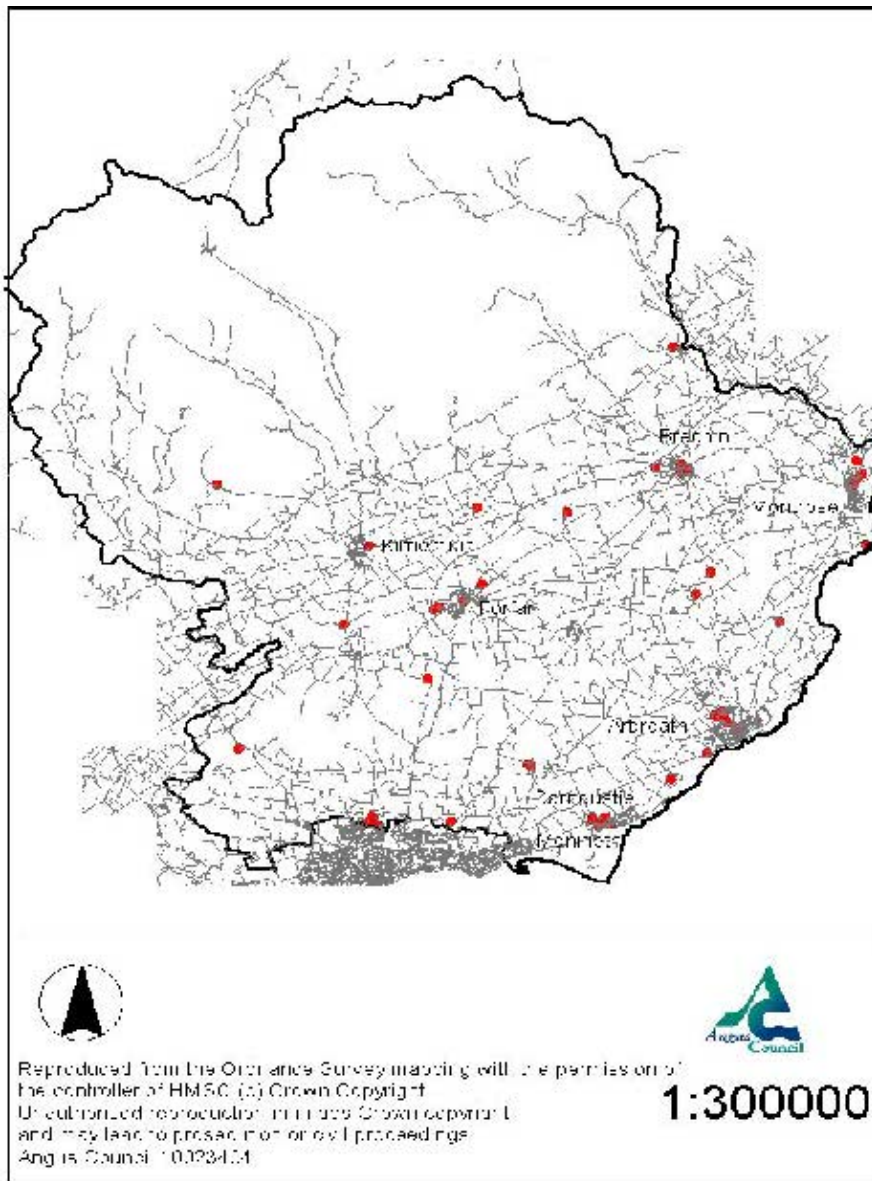
Hectares	Total Derelict and Urban Vacant Land Area (ha)										
	1996	1997	1998	1999	2000	2001	2002	2003	2004	2005	1996-2005
Angus	387	373	379	254	213	215	213	153	152	172	- 215
Scotland	12,933	12,296	12,037	11,432	11,044	10,411	10,922	10,717	10,529	10,570	- 2,363
<b>Per cent change</b>											
Angus				-	-16.3%	1.0%	-0.9%	28.0%	-0.7%	13.1%	-55.5%
Scotland		-3.7%	1.8%	32.9%	-5.0%	-3.4%	-5.7%	4.9%	-1.9%	-1.8%	0.4%

Hectares	Urban Vacant Land and Derelict Land 1996 – 2005 (ha)									
	1996	1997	1998	1999	2000	2001	2002	2003	2004	2005
Angus										
Vacant Land	50	40	40	27	26	31	34	34	32	54
Derelict Land	337	333	339	227	186	184	179	120	121	118



The following map shows the location and spread of vacant and derelict land in Angus:-

Map 1 : Scottish Vacant and Derelict Land Survey 2005



**Legislative/National Relevance** – The Scottish Executive collects data from local authorities and publishes the results annually in the Scottish Vacant and Derelict Land Survey (SVDLS). The survey is a co-operative effort between local authorities and the Scottish Executive Development Department.

## 2. New Development Split Between Greenfield and Brownfield Sites (Housing and Industry)

### Why this Indicator is Important

Attractive streets and buildings, low levels of traffic, noise and pollution, green spaces, and community safety are fundamental to a good quality of life whether in a town, village or countryside. New developments must be planned in ways, which revitalise our urban areas, ensure thriving rural communities, conserve the historic environment and maintain the character of our townscapes and countryside.

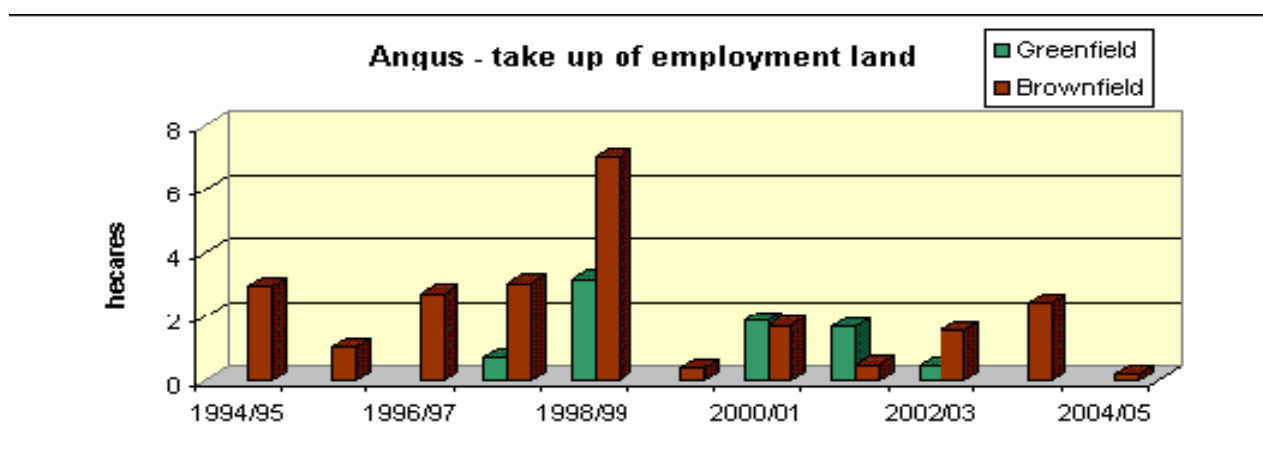
In order to protect the countryside by minimising new Greenfield development and encourage the momentum of urban regeneration, there is a need to re-use previously developed land, and to bring empty buildings back into use. New development within existing urban areas contributes to the revitalisation of communities and enables people to live near to shops and employment thus reducing the need to travel.

The Angus Local Plan Review – Finalised Plan seeks to support this policy and therefore, as one of its guiding principles, has a policy to give priority to the reuse of previously developed sites where appropriate. The implementation of this policy is reflected in the tables and graphs below:

### **New Development on Greenfield and Brownfield Sites**

#### **Angus Council : Employment Land : Take Up**

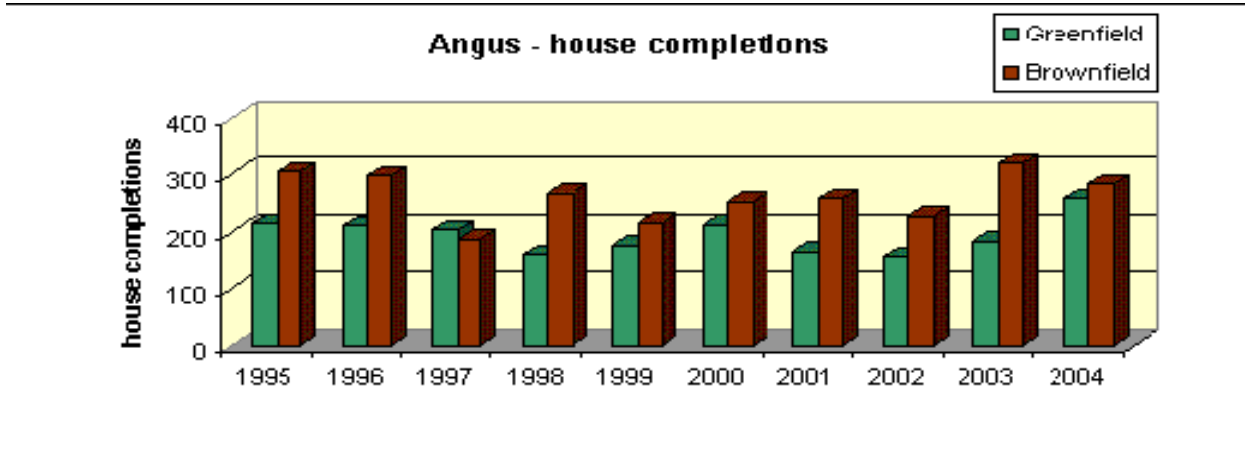
	1994/95	1995/96	1996/97	1997/98	1998/99	1999/2000	2000/01	2001/02	2002/03	2003/04	2004/05
Greenfield				0.71	3.2		1.88	1.69	0.47		
Brownfield	2.96	1.03	2.75	3.07	7.04	0.39	1.72	0.49	1.57	2.45	0.19



The most significant and consistent area of employment land take-up has occurred at Kirkton Industrial Estate, Arbroath. There has been significant but sporadic take up at Forties Road, Montrose. One particularly noticeable period of take up was during 1998/99 when 3.2 hectares were taken at Orchardbank, Forfar.

### Angus Council : Housing Land : Completions (June – June)

	1995	1996	1997	1998	1999	2000	2001	2002	2003	2004	2005
Greenfield	214	211	203	161	177	212	165	157	184	257	189
Brownfield	304	297	188	266	216	253	258	226	318	283	237



#### Legislative/National Relevance:-

- Best Value Performance Indicator
- National Headline Indicator for the U.K.

### 3. Area of Protected/Key Habitats, e.g. Sites of Special Scientific Interest etc. (Hectares)

#### Why this Indicator is Important

The special natural, cultural, and archaeological characteristics of the Angus countryside and landscape are highly valued and must be retained. There is a need to reverse the decline in wildlife and habitats – our biodiversity. Any change to our landscape must be well managed and not cause unacceptable impacts on our natural heritage.

The Angus Local Plan Review Finalised Plan recognises the importance of the natural environment in Angus and seeks to protect sites containing habitats, species, and/or geological or geomorphologic features of local or regional importance, whether designated or otherwise.

The Tayside Biodiversity Action Plan outlines how biodiversity contributes to our overall economy by supplying the raw materials for our clothing, food, drink, fuel, buildings and roads. Tourism based on wildlife is one of Scotland's major income-earners and many jobs in Angus are environment-based, such as farming, fishing and services providing water, energy and building materials.

#### **Sites of Special Scientific Interest (including National Nature Reserves, Special Areas of Conservation, Special Protection Areas, Geological Sites, Local Nature Reserves and National Scenic Areas)**

<b>Site</b>	<b>Hectares</b>
Auchterhouse Hill	251.30
Balloch Moss	16.00
Balshando Bog	3.80
Barry Links	1041.10
Blacklaw Hill Mire	27.10
Caenlochan	5204.00
Carrot Hill Meadow	8.60
Corrie Fee	164.00
Craigs of Lundie & Ardgath Loch	30.10
Crossbog Pinewood	62.40
Den of Airlie	87.00
Den of Fowlis	8.50
Den of Ogil	5.50
Dilty Moss	38.00
Dryleys Brickpit	1.40
Duns Dish	31.50
Easthaven	1.16
Elliot Links	28.70
Forestmuir Meadow	68.20
Gagie Marsh	6.10
Gannochy Gorge	46.00
Little Ballo	11.50
Loch Brandy	99.70
Lochindores	16.60
Loch of Kinnordy	86.00
Loch of Lintrathen	189.10
Long Loch of Lundie	34.20
Monifieth Bay	245.20

<b>Site</b>	<b>Hectares</b>
Montrose Basin	955.40
North Esk & West Water	288.70
Red Craig	105.50
Rescobie & Balgavies Lochs	178.00
Restenneth Moss	35.40
Rickle Craig to Scurdie Ness	73.10
River South Esk*	N/A
Rossie Moor	132.34
Round Loch of Lundie	8.10
Turin Hill	19.70
Whitehouse Den	0.20
Whiting Ness, Ethie Haven	153.00
Firth of Tay & Eden Estuary	N/A
<b>TOTAL HECTARES</b>	<b>9762.2</b>

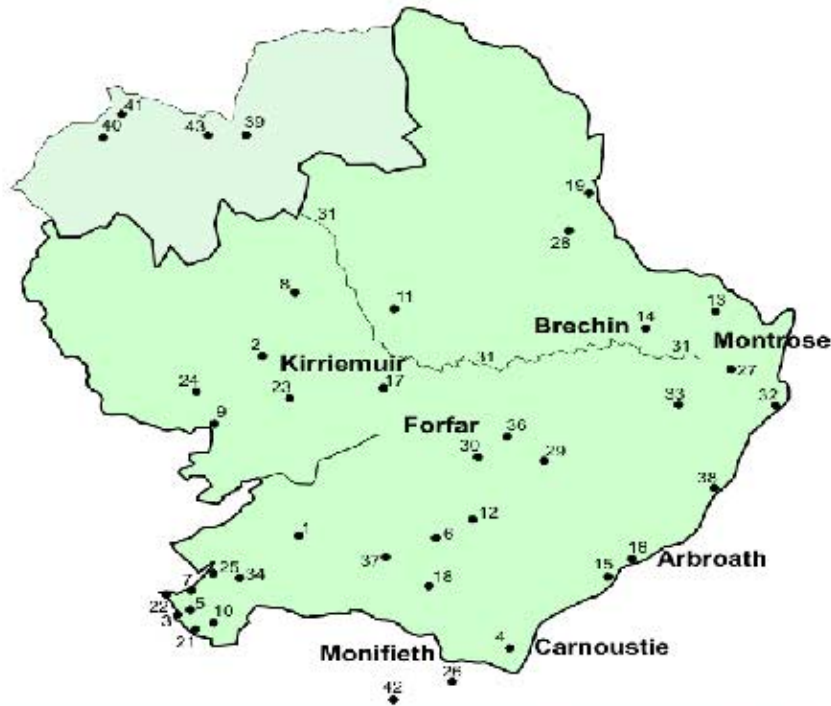
This represents 4.88% of the Angus area is protected under the above designations.

*\* Are linear and based on river systems so no area measurements are available.*

#### **Legislative/National Relevance**

- EU and National Legislation – new Countryside and Wildlife Act
- Sites designated by Scottish Natural Heritage
- National and Local Biodiversity Action Plans

# Natural Heritage Designations



RFF		NNR	SAC	SPA	RAMSAR	SSSI	GCR	OTHER
1	AUGHTERHOUSE HILL					•		
2	BALLOCH MOSS					•		
3	BALSHANDO BOG					•		
4	BARRY LINKS		•			•	•	
5	BLACKLAW HILL MIRE					•		
6	CARROT HILL MEADOW					•		
7	CRAIGS OF LUNDIE AND ARDGARTH LOCH					•		
8	CROSSBOG PINWOOD					•		
9	DEN OF AIRLIE	•				•		
10	DEN OF FOWLIS					•		
11	DEN OF OGIL					•		
12	DILTY MOSS					•		
13	DRYLEY'S BRICKPIT					•	•	
14	DUN'S DISH					•		
15	EASTHAVEN					•		
16	ELLIOT LINKS					•		
17	FORESTMUIR					•		
18	GAGIL MARSH					•		
18	GANNDOCHY GORGE					•	•	
21	LITTLE BALLO					•		
22	LOCHINDORES					•		
23	LOCH OF KINNORDY			•	•	•		
24	LOCH OF LINTRATHEN			•	•	•		
25	LONG LOCH OF LUNDIE					•		
25	MONIFIETH BAY					•		
27	MONTROSE BASIN			•	•	•	•	• LNR
28	NORTH ESK & WEST WATER PALEOCHANNELS					•	•	
29	RESCOBIE AND BALGAVIES LOCHS					•		
30	RESTENNETH MOSS					•		
31	RIVER SOUTH ESK (linear)		•			•		
32	RICKLE CRAIG - SCURDIE NESS					•	•	
33	ROSSIE MOOR					•		
34	ROUND LOCH OF LUNDIE					•		
36	TURIN HILL (composite site)					•	•	
37	WHITEHOUSE DEN					•	•	
38	WHITING NESS - ETHIE HAVEN COAST					•	•	
39	LOCH BRANDY					•		
40	CORRIE FEE	•	•					
41	CARN LOCHAN		•	•		•		
42	FIRTH OF TAY EDEN ESTUARY		•	•	•			
43	RED CRAIG					•	•	

**NNR** - National Nature Reserve  
**SAC** - Special Area of Conservation  
**SPA** - Special Protection Area  
**SSSI** - Site of Special Scientific Interest  
**GCR** - Geological Conservation Review Site  
 (i.e. site is partly or wholly a SSSI for its geological interest)  
**LNR** - Local Nature Reserve

#### 4. Area Designated as Country Parks (hectares)

##### Why this Indicator is Important

The ability to access and explore open countryside plays an important role in people's quality of life. The Angus countryside with its variety of landscapes, including mountains, lochs, woodlands and seashore, provides opportunities for visitors of all ages to enjoy the outdoors. Country parks provide an opportunity for relaxation and exercise in an informal setting and can also provide a haven for wildlife. As well as offering a range of activities to visitors, country parks are also a valuable learning resource offering illustrated talks and guided walks to schools, clubs and other organisations.

The county of Angus is fortunate to have several Country Parks within its boundaries. These are located at Monikie, Crombie and Forfar Loch, and are manned by the Angus Ranger Service who have established bases at these locations. A ranger service has also been established in the Angus Glens based in Glen Doll and rangers also operate out of the Scottish Wildlife Trust's visitor centre at Montrose Basin.

- Monikie Country Park, with its reservoirs, woodland and parkland covering 75 hectares, is an ideal location for a visit to the countryside. The scenic surroundings offer many opportunities to enjoy the outdoors at any time of the year. It has operated as a Country Park since 1981.
- Crombie Country Park was officially opened in September 1983. Its 114 hectares includes Crombie Loch as well as broadleaved and coniferous woodlands.
- Forfar Loch Country Park is situated only a few minutes walk from the centre of the historic town of Forfar. With its woodlands, loch and grassland habitats covering 80 hectares, it is a haven for visitors and wildlife throughout the year. The loch itself is 1½ km long and 9 metres deep. It is bounded by a footpath of 5 km in length.

Country Parks	3	269 ha	Includes 111 hectares of water in Forfar Loch and Monikie and Crombie Reservoirs
---------------	---	--------	--

- Over the years 2002-2004, the country parks at Forfar Loch, Crombie and Monikie attracted on average 327,000 visitors.
- The Angus Glens Ranger service was established in 1998 and operates throughout the Angus Glens, an area of some 1,000 square kilometres. The service is based in Glen Doll and manages on a day-to-day basis the Caenlochan National Nature Reserve, one of the most important natural history sites in Britain as it supports a greater number of rare arctic-alpine plants than any other site in Britain. On average Glen Doll attracts over 70,000 visitors per year.
- Montrose Basin is a complex estuarine ecosystem which is recognized internationally, nationally and locally particularly for wildfowl and waders which rely on the area of tidal flats for food and refuge. The site comprises the entire basin of the River South Esk and covers some 1024 hectares.

##### **Legislative/National Relevance:-**

- Part 1 Land Reform (Scotland) Act 2003
- Outlined in Scottish Outdoor Access Code
- National Planning policy Guidance 11(NPPG11)
- Planning Advice Note (Pan65) : Planning and Open Space
- Countryside (Scotland) Act 1967

## 5. Area (in hectares) of Managed Green Space for Leisure

### Why this Indicator is Important

The opportunity to pursue recreational activity is essential to the quality of life; health and well-being of people and can also contribute to the local economy. Within Angus there is a wide range of opportunities for sport, informal and formal recreation with areas of open green space contributing towards the area's attractiveness to both residents and visitors.

The towns in Angus are characterised by their range of open spaces, including coastal links, public parks, school playing fields, allotments, footpaths and general amenity areas including areas of tree planting. Areas of recreational and/or amenity value are protected from development in the Angus Local Plan and an Open Space Strategy is currently being developed by Angus Council.

Passive recreation	1,118.3388 hectares
Active recreation *	458.8864 hectares
Play areas	14.2664 hectares
Total area of Local Authority maintained land	1,591.4916 hectares

\* Active recreation includes:-

- Pitch and putt areas
- Pitches (96 + 31 within Educational Grounds)
- All weather pitches
- Bowling greens
- Allotments
- Parks
- Country parks

### **Legislative/National Relevance:-**

- Part 1 Land Reform (Scotland) Act 2003
- Outlined in Scottish Outdoor Access Code – [www.outdooraccess-scotland.com](http://www.outdooraccess-scotland.com)
- National Planning Policy guidance 11 (NPPG 11)
- Planning Advice Note (Pan 65): Planning and Open Space
- Countryside (Scotland) Act 1967

## 6. Visitor Numbers to Key/Selected Sites

### Why this Indicator is Important

Tourism is a major industry in the UK and it is important that it is economically, socially and environmentally sustainable. In Angus, the high quality of the environment is a draw to visitors from both home and abroad. However, there is a need to manage visitor numbers in a way that lessens the impact on the environment and does not spoil the very thing the visitors have come to see.

The Tourism Strategy for Angus and Dundee (2001 – 2005) describes Angus as being:

*An “authentic” and varied corner of Scotland with a rich heritage and an excellent environment. With its blend of coast and countryside it is an area that excels in outdoor pursuits and is a county to escape to from the stresses and strains of modern living.*

The Strategy recognises that the quality of a destination’s environment is clearly of importance as customers increasingly choose “green” destinations. The Tourism Strategy highlights the importance of the Angus Glens being incorporated into the National Park area as a further enhancement to the County’s reputation. With a range of archaeological and heritage attractions (Pictish stones, hill forts, Restenneth Priory, Pictavia, Arbroath Abbey, NTS properties etc) the area is something of a “cradle” of the Scottish nation and this complements the concept of authenticity – it is the antithesis of over-commercialised tourism kitsch. The environment has also created a playground for outdoor pursuits (golf, walking, fishing & field sports etc) and there is potential to further link this environmental theme to the area’s food product.

Visitor Attractions	1998	1999	2000	2001	2002	2003	2004	% change 2003 - 2004
Glamis Castle	118,706	131,852	107,524	99,495	113,672	108,430	119,153	9.89
Arbroath Abbey	8,142	8,294	6,634	14,604	14,026	12,509	12,367	-1.14
Angus Folk Museum, Glamis	11,034	9,493	9,939	9,608	7,123	6,617	5,194	-21.51
Arbroath Museum	26,863	26,986	23,199	21,072	22,670	20,629	20,600	-0.14
The Meffan Museum, Forfar	22,798	23,150	21,586	18,506	18,701	18,901	17,694	-6.39
Montrose Museum	11,902	9,038	10,473	11,706	12,448	10,892	10,544	-3.20
William Lamb Studio, Montrose	482	283	361	443	491	413	400	-3.15
House of Dun, Montrose	12,871	12,775	10,185	9,959	10,220	9,146	8,066	-11.81
Edzell Castle	11,040	9,792	9,095	7,707	6,857	7,119	8,362	17.46
Barrie’s Birthplace, Kirriemuir		6,999	6,672	6,579	4,604	4,541	5,116	12.66
Barry Mill	3,209	3,007	3,162	2,904	2,333	2,549	2,430	-4.67
Montrose Basin Wildlife Centre	12,558	11,604	10,908	10,458	10,358	8,233	6,149	-25.31
Pictavia Visitor Centre, Brechin	na	na	na	na	6,491	3,883	4,231	8.96
Glenesk Folk Museum	na	na	na	na	na	6,854	5,349	-21.96

Source : Visit Scotland

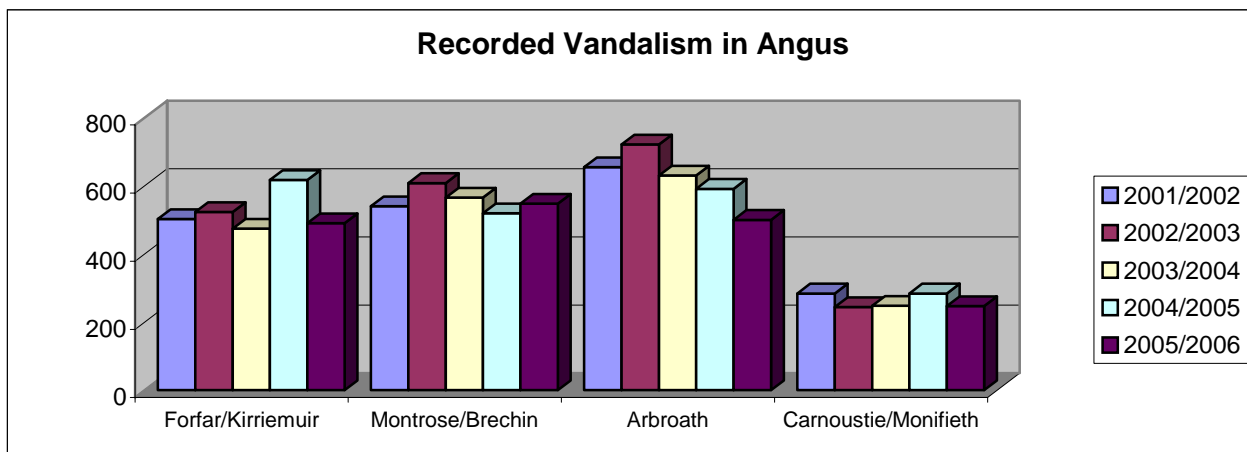
### **Legislative/National Relevance:-**

- Sustainable Tourism is being developed as a National Indicator

## 7. Number of Reported Vandalism Incidents

### Why this Indicator is Important

Vandalism can have an adverse impact on peoples' quality of life. Everyone has a right to live in a community that is safe. Vandalism imposes economic costs, reinforces social exclusion and can hasten the environmental decline of neighbourhoods. Areas that suffer from repeated acts of vandalism increase peoples' fear of crime and are very frustrating for those having to repeatedly repair property that has been vandalized.



There has been a change in the way figures are collated since the previous report and individual burgh statistics are no longer available. The figures now cover rural and, in some cases, combined burgh areas. The graph above shows the Arbroath area, which has the highest population, has had a steady decline in the number of recorded incidents since 2002/2003. During 2005/2006 the Brechin/Montrose area recorded the highest number of incidents whilst the lowest level of incidents has consistently been recorded in the Carnoustie/Monifieth area.

An Antisocial Behaviour Strategy was published in June 2005 and includes an indicator on the recorded level of vandalism and malicious mischief. In 2004/2005 there were 2010 such crimes reported to the police across Angus reducing to 1800 in 2005/2006. The strategy sets a 5% reduction target for each of the next three years.

### **Legislative/National Relevance:-**

- Crime and Fear of Crime is a National Headline Indicator

## 8. Area Managed Under Agricultural/Environmental Schemes and Organic Farming \*

### Why this Indicator is Important

Agriculture is a major influence on the appearance of the countryside and has created a legacy of countryside features and wildlife habitats. Agricultural land occupies more than three-quarters of the UK's surface area and in Angus, agriculture is an important part of the economy. Therefore, farmers have a key role in the responsible management of the countryside.

The importance of achieving a balance between the sensitive management of our natural heritage in order to maintain and enhance biodiversity, sustaining a viable agricultural industry and ensuring the long-term viability of rural communities is now well recognised.

In Scotland, schemes to encourage the adoption of environmentally friendly farming practices have operated for a number of years now. Examples include the Environmentally Sensitive Areas Scheme (there are no designated ESA's in Angus), which were first introduced in 1994 and the Countryside Premium Scheme, which was introduced in 1997.

The Rural Stewardship Scheme helps ensure that farming is a lead player in the protection and enhancement of the environment. The scheme also plays a major role in sustainable rural development and helps to maintain the prosperity of our rural communities.

The Organic Aid Scheme (OAS) has been in operation in Scotland since 1994 supporting the conversion of land to organic status. The contribution of the OAS to the growth of organic farming in Scotland has accelerated sharply in recent years – mostly in upland rough grazing.

In Angus, the take-up rate of those agri-environmental schemes is as follows (As at December 2003):

Scheme	Hectares
Countryside Premium Scheme	20,731.329
Habitats Scheme	896.635
Organic Aid Scheme	10,551.273
Rural Stewardship Scheme	3,979.404
<b>Total</b>	<b>36,158.641</b>

Source: SEERAD

### Organic Farming In Angus Main and Minor Holdings June 2002 Census

	Units	Hectares
Totally organic	8	5,687.660
Partly organic	30	6,375.170
Nor organic	851	146,597.411
No response	391	31,152.036
<b>Total</b>	<b>1,280</b>	<b>189,812.277</b>

Source : SEERAD

\* Denotes not updated

## 9. Area Covered by Forest and by Forest Type \*

### Why this Indicator is Important

Woodlands and forests are important because they are fundamental to achieving the goal of Sustainable Development. They enhance our landscape and provide habitats for many species of wildlife. In addition, woodlands and forests provide places for leisure and recreation as well as being an economic resource for timber production, tourism, and local development and regeneration. Trees also contribute towards reducing the UK's carbon dioxide emissions targets under the Kyoto protocol by removing carbon from the air and acting as a "carbon sink".

The 1995-1999 National Inventory of Woodland and Trees showed that 16.4% of the total area of Scotland was woodland, nearly three times as much as in 1924.

### **Area of new forest planting (total and percentage of broadleaved and natural species)**

Forests and woodlands enhance our landscape and are habitats for wildlife. They are places for leisure and recreation and are an economic resource for timber production, tourism, and local development and regeneration. Plans for creating new woodlands need to be sensitive to possible impacts on soil, water, wildlife, heritage features and other aspects of the woodland setting.

The Forestry Commission seeks to increase the area of forest in Scotland by encouraging a steady expansion of diverse, productive and well-managed multi-benefit forests, which use a range of appropriate tree species and silvicultural systems, and by encouraging the expansion of our native woodlands.

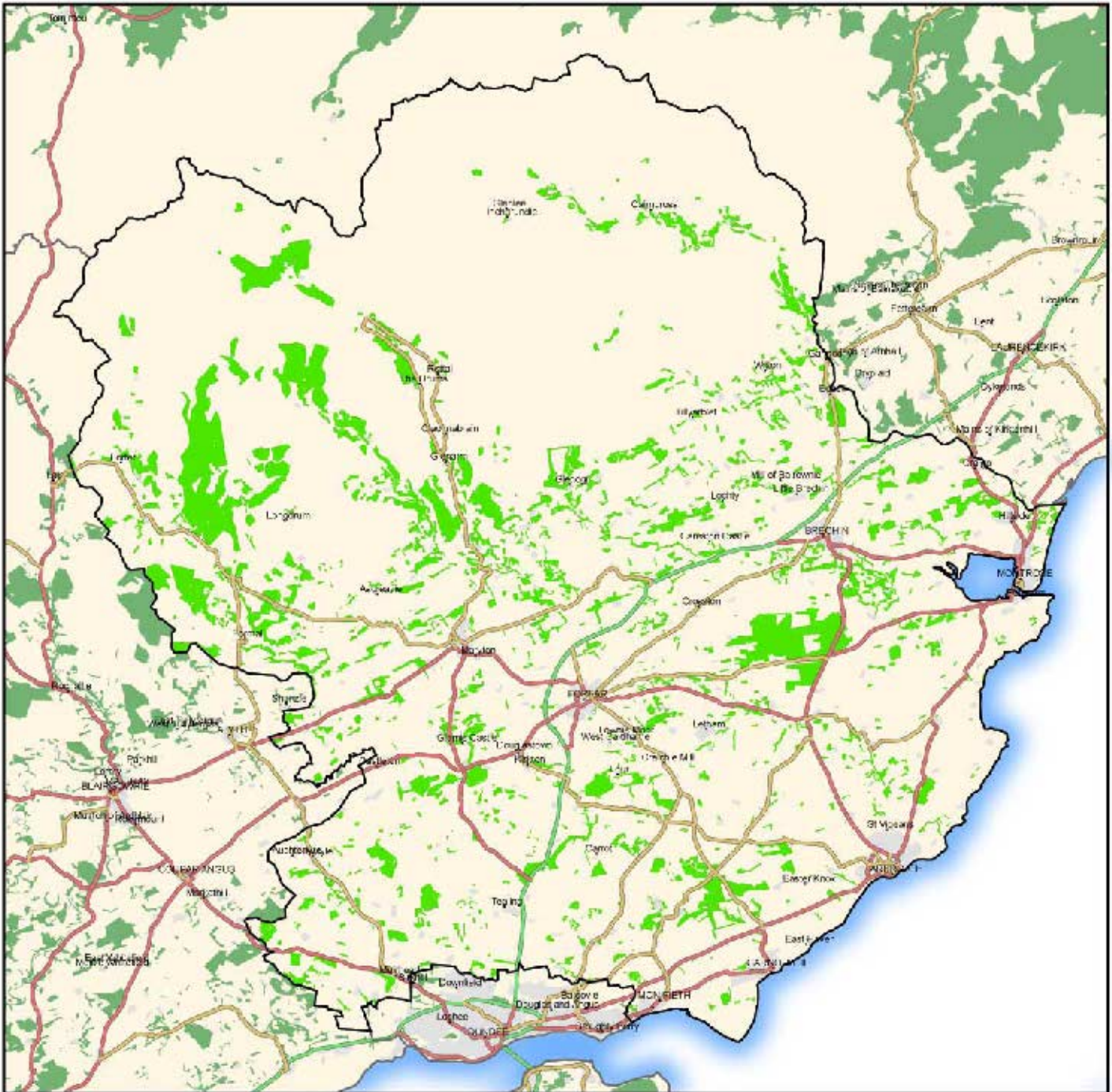
The Woodland Grant Scheme and the Farm Woodland Premium Scheme were recently reviewed and revised into the Scottish Forestry Grants Scheme and aim to encourage the creation and management of woods and forests to provide economic, environmental and social benefits for now and the future. The scheme also includes grants for restocking.

### **Legislative/National Relevance:-**

- National Indicator for Sustainable Development
- The UK Forestry Standard
- Forests for Scotland – Scottish Forestry Strategy – Scottish Executive 2000

\* Denotes not updated

# ANGUS COUNCIL



## Distribution of Woodland (2ha and greater)

Reference date for woodland 31/03/02



Woodland within Angus Council

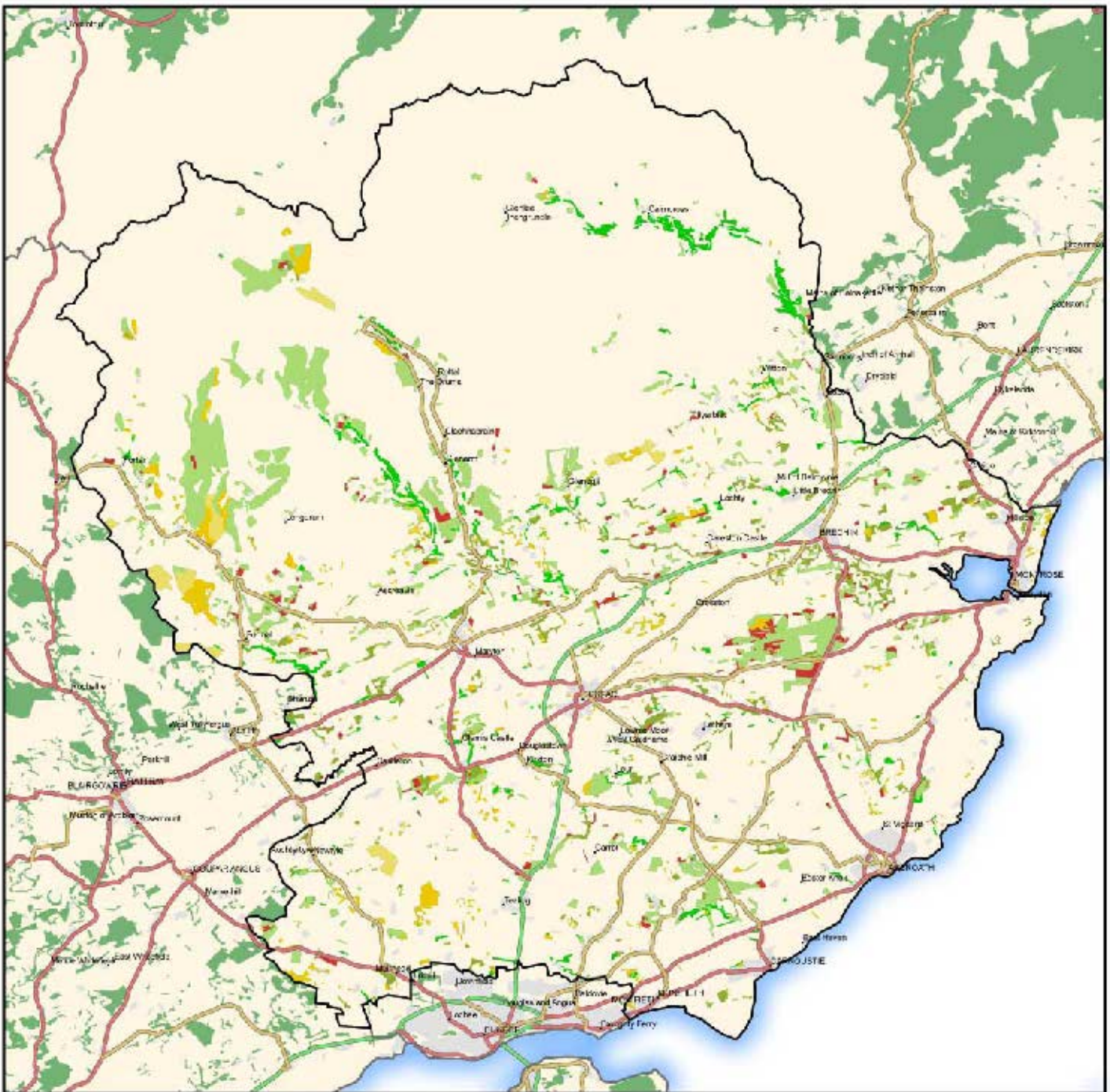
Area of interest: Angus Council

Woodland outwith area of interest

0 10 Kilometres

Based on Ordnance Survey mapping with the permission of the controller of Her Majesty's Stationary Office.  
© Crown Copyright - Forestry Commission Licence No 100025490

# ANGUS COUNCIL



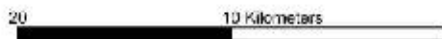
## Distribution of Woodland by Interpreted Forest Type (2ha and greater)



Reference date for woodland 31.03.02

Interpreted Forest Type Within Area of Interest

- |             |                              |                                   |
|-------------|------------------------------|-----------------------------------|
| Broadleaved | Ground prepared for planting | Area of interest Angus Council    |
| Coniferous  | Failed                       | Woodland outwith area of interest |
| Mixed       | Scrub                        |                                   |
| Young trees |                              |                                   |



Based on Ordnance Survey mapping with the permission of the controller of the Majesty's Stationery Office.  
© Crown Copyright - Forestry Commission. Licence No 1000254/05

## 10. Scheduled Ancient Monuments in Angus

### Why this Indicator is Important

Ancient monuments and archaeological remains are important because they are evidence of the past development of society and help us to understand and interpret the landscape of today. As a finite and non-renewable resource, once lost, they are gone for good and are therefore deserving of protection from development.

Sites of national importance are scheduled as Ancient monuments by Historic Scotland and owners of such properties must apply to them for consent to carry out repairs, alterations, demolition, or any work affecting the monument.

Scheduled Ancient Monuments in Angus (*see Glossary for explanation of categories*)

Category	No. of Sites 2004	No. of Sites 2006
Prehistoric Ritual and Funerary	102	108
Prehistoric Domestic and Defensive	228	220
Roman	9	9
Crosses and Carved Stones	14	14
Ecclesiastical	10	14
Secular	31	25
Industrial	4	4
<b>Total</b>	<b>398</b>	<b>394</b>

### **Legislative/National Relevance:-**

- Historic Buildings and Ancient Monuments Act 1953
- Ancient Monuments and Archaeological Areas Act 1979

## 11. Listed Buildings in Angus

### Why this indicator is important

The Scottish Ministers are required to compile lists of buildings of special architectural or historic interest. The administration of both local and national conservation policies is based on these lists. All buildings erected before 1840, the character of which remains substantially unimpaired, are included. Later buildings are selected on the basis of their individual character and quality. Special regard is paid to:

- planned streets, villages of burghs;
- works of well known architects;
- buildings clearly associated with famous people or events;
- good examples of buildings connected with social and industrial history and the development of communications;
- distinctive regional variations in design and use of materials;
- good examples within individual building types; and
- technological innovation.

### **ANGUS – SUMMARY OF LISTED BUILDINGS (as of Feb 2006)**

*Source: Historic Scotland/Angus Council-Planning & Transport*

	<b>A</b>	<b>B</b>	<b>C(S)</b>	<b>TOTALS</b>
Burghs	32	470	359	861
Parishes	96	744	483	1323
<b>Total</b>	<b>128</b>	<b>1214</b>	<b>842</b>	<b>2184</b>

*For a definition of the categories – see Glossary*

The extent to which historic buildings and structures are in poor to very bad condition is an indicator of the state of health of the built environment, urban regeneration and the creation of sustainable communities. New development needs to look for opportunities to conserve the local heritage.

Historic Scotland maintain a “Buildings at Risk” (BAR) register which is a list of buildings (generally a listed building, or a building within a conservation area) which may be vacant, lacking a foreseeable new use, and suffering from neglect and/or poor maintenance, fire damage, damage from the elements, or structural problems. The Buildings at Risk Register for Scotland shows the position in Angus as being 26 Buildings at Risk. The total of 26 buildings are made up from the following categories:

<b>Council Area</b>	<b>Cat A</b>	<b>Cat B</b>	<b>Cat C(s)</b>	<b>Total Listed Bldgs</b>	<b>Total BAR</b>	<b>Listed Bldgs as % of BAR</b>
Angus	3	15	3	21	26	81%

### **Legislative/National Relevance:-**

- Planning (Listed Buildings and Conservation Areas) (Scotland) Act 1997
- Planning (Listed Buildings and Conservation Areas) (Scotland) Act 1997
- Historic Buildings and Ancient Monuments Act 1953
- Ancient Monuments and Archaeological Areas Act 1979
- Civic Amenities Act 1967

## SECTION TWO : WASTE

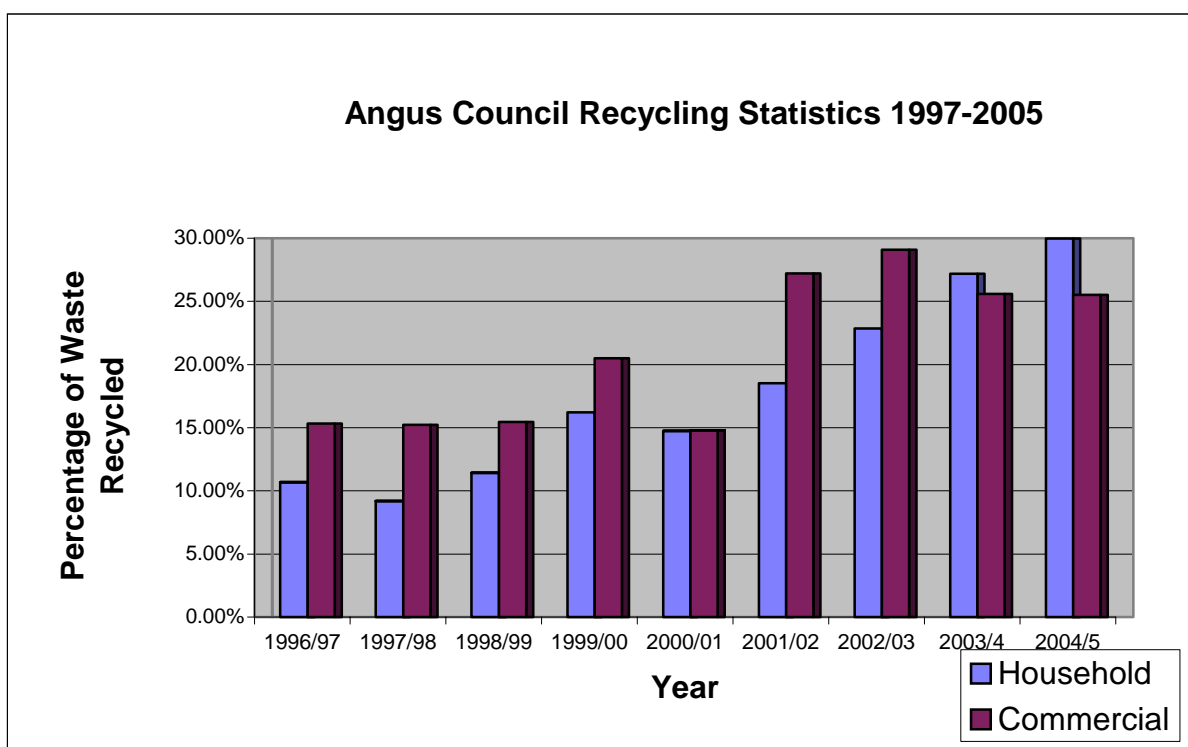
### 12. Percentage of Total Household Waste Recycled

#### Why this Indicator is Important

The types of waste we produce, all forms of waste management, and the transport of waste, have impacts on the environment. Waste is a potential resource and increased levels of reuse, recycling and energy recovery will contribute to sustainable development. The reduction of waste at source is at the top of the "waste hierarchy", followed by reuse or recovery through recycling, composting or energy recovery and finally, disposal of what is left.

The target set for Angus Council is by 2006/7 43% of municipal waste should be recycled or composted. The 2020 target is to reduce the amount of biodegradable waste going to landfill so that 35% is recycled and a further 20% is composted.

The graph below illustrates Angus Council's recycling rates for household and commercial waste for the last nine years:-



### 13. Household Waste Generated Per Year (metric tonnes)

- Based on total household wastes:-

	2002/03	2004/05
Waste to energy	16,261 T	15,576 T
Composted	3,147 T	3,660 T
Recycled	7,651 T	12,116 T
Landfilled	29,342 T	26,925 T

#### Legislative/National Relevance:-

- National Headline Indicator
- National Waste Strategy

## SECTION THREE : ENERGY

### 14. Energy Use Per Household

#### Why this Indicator is Important

The generation and use of energy has widespread environmental impacts including the release of carbon dioxide, the main greenhouse gas. One element of a sustainable energy policy should be the reduction of energy use through efficiency and conservation measures. Households are responsible for nearly 30 per cent of final energy use, and a quarter of carbon dioxide emissions.

The Council is the energy conservation authority for Angus. The Housing Department's role is to co-ordinate a reduction in home energy consumption by promoting energy efficiency to householders throughout Angus. The Council provides information on general energy issues, grants, government energy policies, and where to get specific energy advice. The Council's Housing Department employs a Home Energy Management Officer who provides advice on energy efficiency, along with information on grants and fuel bills, for all residents in Angus. The HECA strategy has a target of 31% energy savings and 28% carbon dioxide reduction by 2007 from a 1997 base.

Comprehensive energy efficiency Improvements to the Council's own housing stock have been carried out for some years, and have included programmes to double glaze all windows, insulate all lofts to 200mm, insulate all cavities, use condensing boilers in all gas heating upgrades, and distribute low energy light bulbs to all tenants. Improvements to Housing Association stock are similarly advanced. However, the largest proportion of the housing stock in Angus is in the private sector, and it is here where improvements need to be made.

#### **CO2 Emissions and Energy Efficiency Angus**

	<b>Base Year 1997</b>	<b>1999</b>	<b>2001</b>	<b>2003</b>	<b>2005</b>
<b>CO2Emissions (tones)</b>	388,238	380,373	355,995	340,388	323,888
Incremental % change	-	- 2.00%	- 6.40%	- 4.38%	- 4.34%
Cumulative % change	-	- 2.00%	- 8.40%	- 12.78%	- 17.03%
<b>Energy Use (GJ)</b>	5,361,187	5,334,132	4,974,875	4,795,225	4,574,884
Incremental % change	-	- 0.50%	- 6.70%	- 3.61%	- 4.34%
Cumulative % change	-	- 0.50%	- 7.20%	- 10.81%	- 15.15%

Source : HECA reports by Angus Council

The average energy consumption for each Angus household for the year 2004/05 was 94.56 GJ. However, it is felt that this figure does not convey very much and it would be better to use the average NHER (National Home Energy Rating) as this will be much more easily understood and will be monitored.

The NHER is a score from 1 to 10 calculated by surveying a house or flat and assessing its energy consumption and insulation performance from a standard checklist. It covers construction type, window glazing, insulation, walls and roof, type of heating system, orientation and exposure etc. It may be an additional optional feature of house purchase surveys in a few years to give an indication of the energy performance of a property to purchasers. 1 is a tent, 10 is well insulated!

The new Scottish Housing Quality Standard requires all social rented sector housing to achieve an NHER of 5 by 2015. All of the Council housing stock was surveyed between 2001 and 2003, which indicated that 80% of the Council stock meets the SHQS. A further energy survey of a percentage of the Council housing stock carried out between 2004 and 2005 also indicated that over 80% of the stock has an NHER rating of 5 or above.

**Target:** To achieve a NHER rating of 5 for all Council housing stock by 2015.

**Legislative/National Relevance:-**

- Home Energy Conservation Act 1995
- Modernising Scotland's Social Housing 2003
- A Partnership for a Better Scotland: Partnership Agreement 2003

## **SECTION FOUR : TRAVEL AND TRANSPORT**

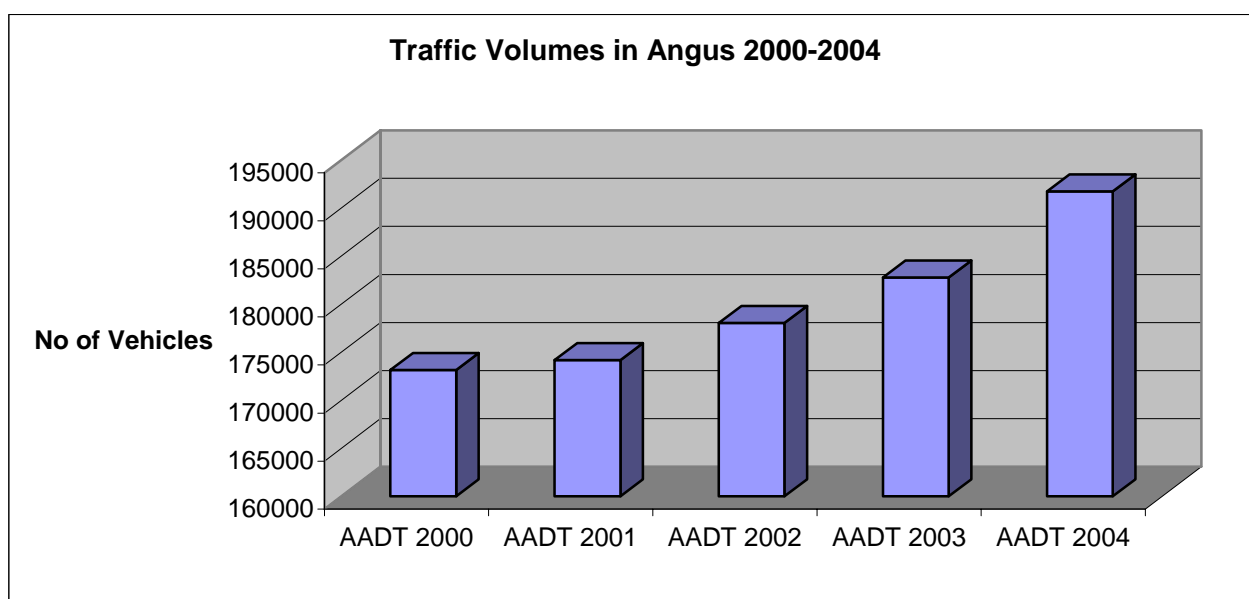
### **15. Overall Traffic Volumes**

#### Why this Indicator is Important

Although the car has brought many economic and social benefits, it has also brought problems. Nationally, the cost of congestion runs into billions of pounds each year. Road traffic is one of the fastest growing contributors to greenhouse gas emissions, which cause climate change, and add substantially to local air pollution and noise levels, damaging health and quality of life.

One of the Government's key objectives is to encourage people to walk, cycle or use public transport more and their cars a little less, and to reduce the need for travel through better land use planning.

#### **Overall Traffic Volumes on Angus Roads (excludes Truck Roads)**



*AADT: Average annual daily total*

The above equates to an increase in traffic volume of 10.73% over four years or an average increase of 2.68% per year. It should be noted that the above figures exclude traffic on trunk roads and only those traffic count sites used consistently each year are included.

#### **Legislative/National Relevance:-**

- National Headline Indicator
- Road Traffic Reduction Act 1997
- Angus Local Transport Strategy 2000

## 16. Mode of Travel to Work in Angus Angus \*

### Why this Indicator is Important

One of the Government's key objectives in transport is to strike the right balance between transport's role in helping the economy progress and allowing people to travel wherever they need to go, while at the same time protecting the environment and improving quality of life. Previously, traffic growth has been associated with economic growth, but the resulting volume of traffic leads to congestion, noise and air pollution and contributes to greenhouse gas emissions, which cause climate change.

A key objective in the Angus Local Transport Strategy is to maintain and improve accessibility to jobs, services and facilities for all members of the Angus Community in the most sustainable way and this involves encouraging an increase in the proportion of journeys to work, school, shops etc by foot, cycle and public transport.

### **Travel to Work and Place of Study (Source : 2001 Census)**

#### **All People aged 16 – 74 in employment or studying**

Area	All people aged 16-74 in employment or studying	Work or study mainly at or from home	Percentage of people aged 16 – 74 in employment or studying who										Average distance travelled (km) to place of work or study <sup>1</sup>	Percentage of public transport users in households <sup>2</sup>	
			Travel to place of work or study by											With car or van	Without car or van
			Underground, metro, light rail, train	Train	Bus, minibus, or coach	Motorcycle scooter or moped	Driving a car or van	Passenger in a car or van	Taxi or minicab	Bicycle	On Foot	Other			
a	b	c	d	e	f	g	h	i	j	k	l	m	n	o	p
Scotland	2510494	6.07	0.43	3.45	13.95	0.46	50.03	8.29	0.77	1.44	14.07	1.04	12.58	63.18	36.82
Angus	54173	6.71	0.05	1.81	7.18	1.04	54.88	8.25	0.74	2.32	15.95	1.65	15.36	77.13	22.87

#### Footnotes:-

Excludes working or studying at home, no fixed place, working at offshore installation, working or studying outside the UK.  
Public transport includes underground, metro, light rail, tram, train, bus, minibus or coach.  
'Works or studies' means all people aged 16 to 74 who work or study mainly at or from home, at no fixed place or travel to a place of work or study.

#### **Legislative/National Relevance:-**

- Angus Local Transport Strategy 2000
- Road Traffic Reduction Act 1997

\* Denotes not updated

## 17. Percentage of Angus Households Within Six Minutes Walk of a Bus Service \*

### Why this Indicator is Important

Accessibility to transport is a key issue for sustainable development and social justice “Sustainable Angus: Local Agenda 21 Strategy” recognised that the key issues to be addressed in Angus are:

- Accessibility for non car owners,
- Accessibility of public transport,
- Access for disabled people,
- Increase service availability through the use of Information Technology,
- Guiding new development to accessible locations.

Nationally, it is recognised that local buses are the most frequently used and the most accessible mode of public transport across Scotland. However, in rural areas such as Angus, a higher proportion of the population live further away from bus stops than in urban areas, and in some of Scotland’s most remote areas no services are available.

The table below outlines on a national level walking time to the nearest bus stop, or the nearest place one can get a bus, and the frequency of bus service there: and compares Angus to national data and our immediate neighbours, i.e. Aberdeen City, Aberdeenshire, Dundee and Perth and Kinross *(from the Scottish Executive Statistical Bulletin Transport Series Trn/2003/2 Bus and Coach Statistics: 2001-02)*.

\* Denotes not updated

## WALKING TIME TO NEAREST BUS STOP

Please note that the Scottish Household Survey is not designed to provide figures for individual local authority areas for each year.

	Walking time to nearest bus stop											All People		
	Up to 6 minutes					7 to 13 minutes					14 or More Minutes		Not Known	No Bus Service
	One bus every ...					One bus every ...								
	Up to 13 mins	14 to 26 mins	27 to 63 mins	64 or more mins	Do not know freq.	Up to 13 mins	14 to 26 mins	27 or more mins	Don't know freq.					
<b>All Scotland</b>	17	24	25	4	15	1	2	3	3		4	1	1	100
Large urban areas	32	32	12	0	12	2	3	1	3		2	1	0	100
Other urban areas	16	28	27	0	18	1	2	2	3		1	1	0	100
"Accessible" small towns	3	25	41	2	16	0	2	6	2		2	1	0	100
"Remote" small towns	1	4	51	9	23	0	0	4	4		4	1	0	100
"Accessible" rural areas	2	7	39	12	12	0	1	7	4		11	1	4	100
"Remote" rural areas	0	0	19	26	10	0	0	10	3		19	1	13	100
Aberdeen City	21	52	9	0	11	1	3	1	1		1	0	0	100
Aberdeenshire	4	11	37	7	13	0	1	6	5		11	1	6	100
<b>Angus</b>	1	13	41	5	20	0	0	6	3		7	1	4	100
Dundee City	44	25	17	0	6	3	1	1	1		1	1	0	100
Perth & Kinross	10	14	32	7	16	0	1	6	3		8	0	4	100

### Key:-

- Large Urban, population > 125,000,
- Other Urban, population > 10,000 –124,999,
- "Accessible" small towns > 3,000 – 9,999 which are within 30 minutes drive of a settlement of 10,000 or more people
- "Remote" small towns > 3,000 – 9,999 which are *not* within 30 minutes drive of a settlement of 10,000 or more people
- "Accessible" rural - settlements of less than 3,000 people, which are within 30 minutes drive of a settlement of 10,000 or more people
- "Remote" rural - settlements of less than 3,000 people, which are *not* within 30 minutes drive of a settlement of 10,000 or more people

### Legislative/National Relevance:-

- National Indicator of Sustainable Development for Scotland

## **18. How Children Travel to School/Walking Buses**

### Why this Indicator is Important

A switch of school journeys from the car to walking, cycling or bus would help to improve children's health and independence and reduce road traffic, congestion and air pollution. There is a need to encourage necessary access to facilities, services, goods and other people in ways, which make less use of the car and minimise impacts on the environment.

Local authorities are being asked to implement School Travel Strategies and plans that in many cases involve local schools carrying out surveys of their pupils, parents and staff. The advantage of this option is that it is also a way of engaging pupils, teachers and parents with sustainable development issues. The following represents the current information regarding how children travel to school:

- 2,329 pupils are entitled to free school transport
- 37 schools are currently producing school travel plans
- A number of schools have launched 'Walk a Day a Week' Initiatives which is making a huge difference
- Four walking buses – Barry Primary School, Birkhill Primary School, Ladyloan Primary School in Arbroath and Kirkriggs Primary School in Forfar

Funding for cycling, walking and safer streets (CWSS) projects which includes engineering and other works to promote "safe routes to school" has continued.

- £ 65,000 in 2001/02
- £ 84,000 in 2002/03
- £175,000 in 2003/04
- £175,000 in 2004/05
- £185,000 in 2005/06
- £187,000 allocated for 2006/07
- £191,000 allocated for 2007/08

### **Legislative/National Relevance:-**

- National Core Indicator of Sustainable Development
- Road Traffic Reduction Act 1997
- Angus Local Transport Strategy 2000

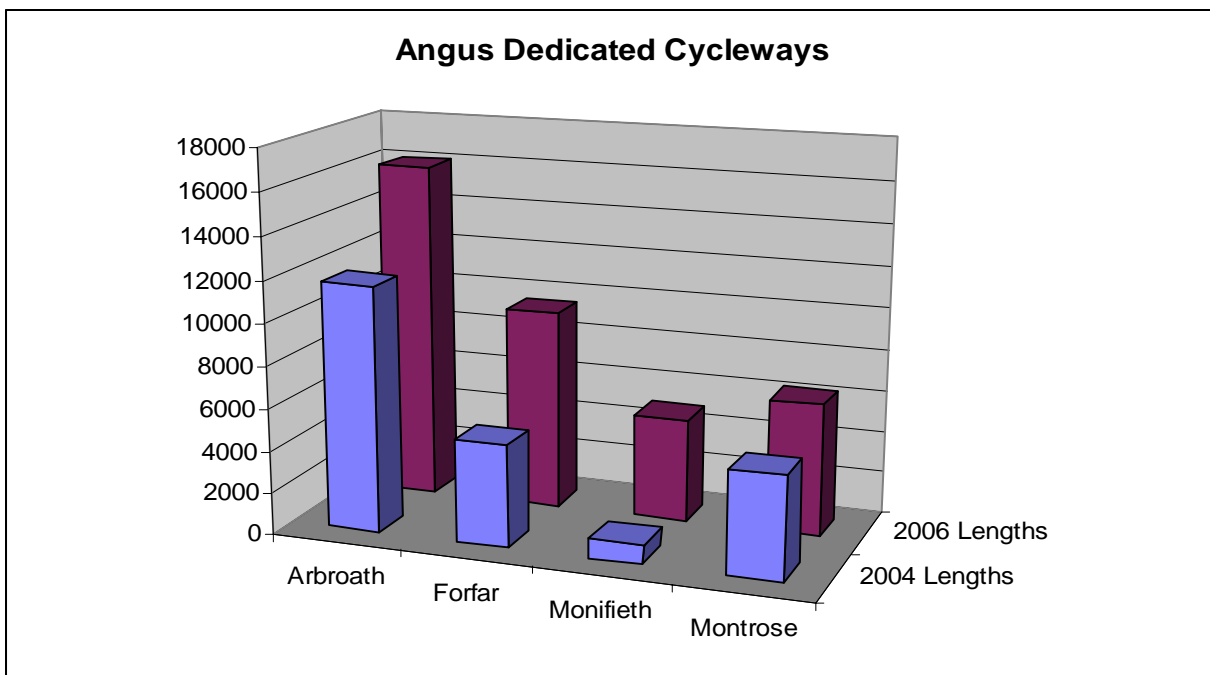
## 19. Dedicated Cycle Lanes in Angus

### Why this Indicator is Important

The Local Transport Strategy recognises the steady rise in road traffic in recent years and highlights the need to change our travel habits in a way that would benefit the environment. A key objective within the Strategy is to encourage people to cycle more and reduce their use of cars for both commuter and recreational journeys. Increasing cycling also has added health benefits for the individual by increasing fitness levels and helping to keep people's weight down. One way of encouraging more cycling is providing dedicated routes for cyclists or by marking out lanes on existing roads.

Other routes such as the Sustrans/North Sea Route promotes "green tourism" and encourages people to visit an area for cycling holidays. Sustrans stands for sustainable transport and is a charity that works on practical projects to encourage people to walk and cycle more through creating a National Cycle Network - 45,235 metres of the National Network and the North Sea Cycle route runs through Angus.

The chart below shows the length of existing dedicated cycle routes in Angus as at March 2004 and includes on street and off street cycles lanes as well as shared use. The chart also includes 1,690 metres of Arbroath and Montrose sections of the Sustrans/North Sea Route.



### Future Proposals:

Route	Length in Metres	Comments
Carnoustie to East Haven	4000	Off Road
St Vigeans to Bothwell	100	Off Road

### Legislative/National Relevance:

- Road Traffic Reduction Act 1997
- Angus Local Transport Strategy 2000

## 20. Lengths of Paths

### Why this Indicator is Important

Paths are about more than just enjoying the outdoors. They can make a contribution to sustainable transport; there are health benefits for users and economic benefits for the local area. They can provide health benefits through encouraging the physical activities of walking, horse riding and cycling.

Paths are a key element in environmental improvement schemes. They make the countryside accessible without the need for a car providing more recreational opportunities close to where people live and work. Their use helps raise environmental awareness, an essential pre-requisite for the promotion of Local Agenda 21. Paths can help biodiversity and can provide 'wildlife corridors' enabling wildlife to move freely from area to area. In addition, paths are the cheapest form of recreation to create and maintain and the whole community regardless of income, age or ability can use them.

Figures quoted in this section are for countryside paths that are managed and/or signposted for public use. They may include paths linking to the countryside through urban green spaces, but do not include other urban paths. Figures are approximate lengths as of February 2006.

The finalised draft Angus Countryside Access Strategy outlines priorities for developing countryside access in Angus. Key priorities for path development are Burgh Path Networks, Angus Coastal Path, Eastern Cairngorms Access Project, and Village Path Networks. Angus Council has a lead role in developing the first three, and will assist local communities with the latter.

### **Burgh 'Paths For All' Networks**

**Forfar** – A 16mile/25km signposted network of paths, tracks and minor roads includes 9miles/14km of off-road paths and tracks.

**Arbroath** – A 17mile/27km network of paths, tracks and minor roads includes 12miles/18km of off-road routes. This network will be signposted in spring 2006.

**Brechin** – A path network is under development and currently includes 5miles/8km of off-road paths.

### **Angus Coastal Path**

7km of coastal cycle route extends from Carnoustie to the Angus Council boundary with Dundee City.

### **Eastern Cairngorms Access Project**

11miles/17km of low-level paths have been developed as part of this project. This figure does not include high-level mountain path routes, or Burgh Path Networks developed within this project.

### **Village Path Networks**

**Newtyle** – The local community have developed signposted path network, 3miles/5km of which is off road.

Figures are not currently available for lengths of paths managed by other organisations or community groups, or for paths maintained by private landowners under the Land Management Contract Menu Scheme.

### **Legislative/National Relevance:-**

- The Countryside (Scotland) Act 1967
- Town and Country Planning (Scotland) Act 1997
- Local Government (Scotland) Act 1973
- Roads (Scotland) Act 1984
- Angus Local Plan Review Finalised Plan 2005
- Land Reform (Scotland) Act 2003

## SECTION FIVE : AIR

### 21. Air Quality Monitoring

#### Why this Indicator is Important

A key sustainable development objective is to control air pollutions in order to reduce the risks of harm to human health, the natural environment and quality of life. The DETR's "Local Quality of Life Counts" handbook of local indicators for sustainable development outlines the following pollutants as having been associated with potential health impacts:

- Nitrogen dioxide (NO<sub>2</sub>): is thought to have both acute and chronic effects on airways and lung function, particularly in people with asthma.
- Sulphur dioxide (SO<sub>2</sub>): affects the lining of the nose, throat and airways of the lung, in particular among those who suffer from asthma and chronic lung disease.
- Ozone (O<sub>3</sub>): affects breathing and lung function.
- Carbon monoxide (CO): reduces the capacity of the blood to carry oxygen and deliver it to the tissues and can block important biochemical reactions in cells.
- PM<sub>10</sub>: particulate air pollution episodes are responsible for causing excess deaths among those with pre-existing lung and heart disease.

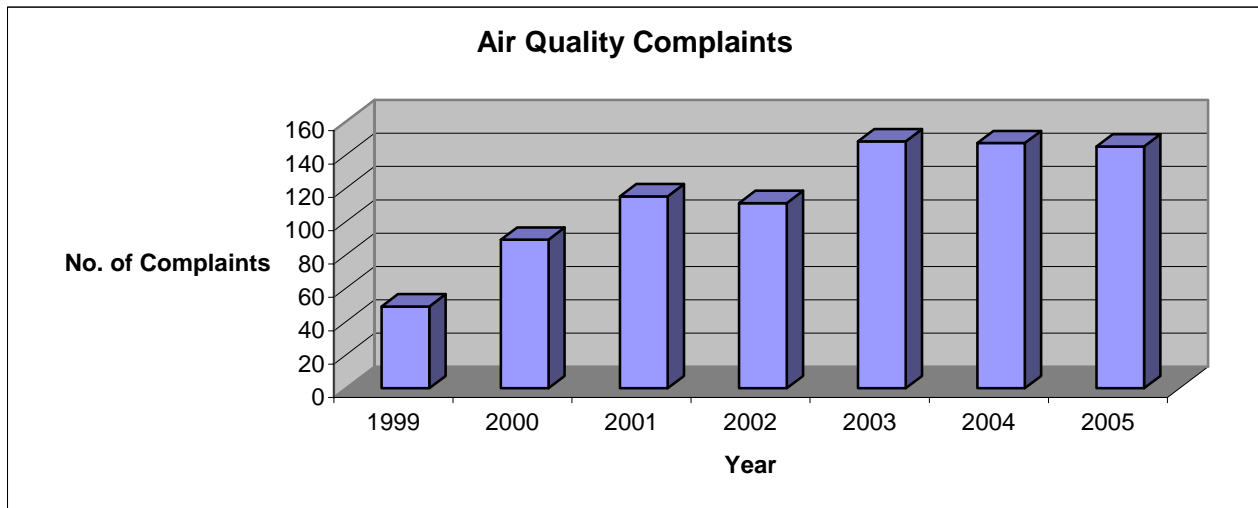
#### **Air Monitoring Data for Angus 2006**

Parameter	Site	Unit	Groundhog	Diff Tube	Partisol	NAQ Obj
NO2	ARBROATH	Max Ann Mean		22.2		40
NO2	BRECHIN	Max Ann Mean		15.8		40
NO2	CARNOUSTIE	Annual Mean		23.5		40
NO2	FORFAR	Annual Mean		23.5		40
NO2	KIRRIEMUIR	Annual Mean		12.5		40
NO2	MONIFIETH	Annual Mean		26.5		40
NO2	MONTROSE	Annual Mean		23.9		40
PM10	CARNOUSTIE	Max 24 hr Mean			35	50
PM10	FORFAR	Max 24hr Mean	27			50
PM10	FERRYDEN	Max 24hr Mean			45.2	50
SO2	FORFAR	Max15min Mean	211			266
SO2	FORFAR	Max 1hr Mean	210			350
SO2	FORFAR	Max 24hr Mean	87			125
CO	FORFAR	Max 8hr Ave	0.3			10

#### **Key to Headings**

- "Groundhog" is the trade name for the Ambient Air Quality Monitoring Station leased from Dundee City Council.
- "Partisol" is the trade name for a gravimetric monitor used to measure PM10 values
- NO<sub>2</sub> is Nitrogen Dioxide (measured in microgrammes per cubic metre)
- PM<sub>10</sub> relates to Particulate Matter (measured in microgrammes per cubic metre)
- SO<sub>2</sub> is Sulphur Dioxide (measured in microgrammes per cubic metre)
- CO is Carbon Monoxide (measured in milligrammes per cubic metre)

The Column marked NAQ Obj stands for National Air Quality Objectives and these are the Government standards, which should not be exceeded. Angus Council is well below these figures for all save Particulate Matter. The Objective for this is to be lowered to 18 in 2010 so the Council has been asked to find out what is causing these high levels. Samples were taken during 2004 and 2005. However, results were inconclusive and further analytical work is to be carried out during 2006. Monitoring data for 2005 has not been fully collated but should be available for the next report.



#### Air Pollution Complaints/Enquiries by Type – 2004 & 2005

Pollution Type	Source	Number of Complaints	
		2004	2005
Chemical Releases		1	4
Dust/Fumes	Industry/Trade/Business Premises	3	14
Dust	Other Sources	1	1
Enquiry		6	22
Fumes/Gases	Domestic Premises	4	6
Smell	Affecting Neighbourhood (misc. sources)	21	17
Smell	Agricultural Spraying/Spreading	20	9
Smell	Industry/Trade Premises	34	21
Smell	Sewage Treatment Works	3	5
Smoke (Dark)	Chimney(s)	1	0
Smoke (Dark)	Industry/Trade Premises	5	4
Smoke	Non Domestic	9	13
Smoke	Domestic Premises	4	7
Smoke	Domestic Bonfires	14	9
Smoke	General Nuisance	8	7
Smoke	Straw/Stubble Burning	5	0
Vehicle emissions		0	1
Misc. Air Pollution		8	5
		<b>147</b>	<b>145</b>

### Air Pollution Complaints/Enquiries by Area – 2004 and 2005

Area	No. of Air Pollution Complaints/ Enquiries	
	2004	2005
Arbroath Office (dealing with complaints from Arbroath/Carnoustie/Monifieth and associated landward area)	60	57
Forfar (dealing with complaints from Forfar/Kirriemuir/Glens and associated landward area)	58	38
Montrose (dealing with complaints from Montrose/Brechin and associated landward area)	29	50
<b>Total</b>	<b>147</b>	<b>145</b>

#### Legislative/National Relevance:-

- Environmental Protection Act 1990 (EPA 90).
- Pollution Prevention and Control Act 1999
- Pollution Prevention and Control (Scotland) Regulations 2000
- Part IV Environment Act 1995
- National Air Quality Strategy 2000 and Addendum 2003
- National Headline Indicator

## **SECTION SIX : WATER**

### **The Water Framework Directive**

The Water Framework Directive (2000/60/EC) is a wide-ranging piece of European environmental legislation which became law in Scotland at the end of 2003 through the Water Environment and Water Services (Scotland) Act 2003 (WEWS Act). The Directive establishes a new legal framework for the protection, improvement and sustainable use of surface waters, transitional waters, coastal waters and groundwater across Europe in order to:-

- Prevent deterioration and enhance status of aquatic ecosystems, including groundwater;
- Promote sustainable water use;
- Reduce pollution; and
- Contribute to the mitigation of floods and droughts.

The main environmental objectives are to protect and improve Scotland's water environment. This will include preventing deterioration of aquatic ecosystems and, where possible, restoring surface waters and groundwater damaged by pollution, water abstraction, dams and engineering activities to 'good status' by 2015.

### **Regulatory Regimes**

Regulatory regimes are required to control activities not previously regulated in Scotland, to ensure that WFD objectives are met. These regimes cover abstractions, impoundments, and engineering works as well as a new control regime for point source discharges to replace the existing Control of Pollution Act (CoPA) 1974.

In fulfilling these duties, SEPA will from 1 April 2006 under the Water Environment (Controlled Activities) Regulations 2005 (CAR) regulate the following activities:-

- abstractions from surface and groundwater;
- impoundments of rivers, lochs, wetlands and transitional waters;
- groundwater recharge;
- engineering in rivers, lochs and wetlands;
- engineering activities in the vicinity of rivers, lochs and wetland which are likely to have a significant adverse impact upon the water environment;
- activities liable to cause pollution;
- direct or indirect discharge of List I substances to groundwater; and
- any other activities which directly or indirectly is liable to cause a significant adverse impact upon the water environment

Further details on the Water Framework Directive are provided in Appendix III.

Scottish Water has applied for CAR licences for all controlled activities concerning impoundments and abstractions in Angus and these are currently under consideration by SEPA. Most of these involve the transfer of existing Water Orders etc. to the CAR licensing regime.

Similarly all existing discharge consents are in the process of being transferred from the existing CoPA regime to the CAR format.

Two Capital Investment Investigation projects have recently commenced to investigate and assess the implications of the Water Framework Directive in both the Whitehillocks and Lintrathen/Backwater catchments. This will result in proposals to enable Scottish Water to meet the requirements of the Directive in the timescale required.

## 22. Water Supply

The Angus Area is served with water from three Sources:-

### **Loch Lee** - (Treatment Works at Whitehillocks)

Supplies low lying part of Brechin and rural areas such as Glen Esk, Edzell, Fern, Noranside, Tannadice, Letham, Craichie, Kingsmuir, Rescobie, Aberlemno, Redford, Guthrie.

- Approximately 4Mld.

### **Backwater** - (Treatment Works at Lintrathen)

Supplies Kirriemuir, Forfar, Arbroath, Montrose, and high part of Brechin and rural areas of Hillside, Ferryden, Inverkeilor, Friockheim, Auchmithie, Colliston, Bridgend of Lintrathen, Newtyle, Charleston, Glamis, Inverarity, Glamis, Douglstown and Gateside.

- Approximately 25.5Mld.

### **Clatto Water Treatment Works**, Dundee (Backwater Reservoir and Loch of Lintrathen waters).

Supplies Carnoustie, Monikie, Newbigging, Barry, Muirdrum, and Monifieth.

- Approximately 7.5Mld.
- A total of approximately **37Mld**, with approximately **28Mld** to domestic customers and 9Mld to commercial customers.

A major leakage reduction (Find & Fix) project was undertaken in 2004/2005 which result in a total reduction in demand from the Clatto and Lintrathen WTW of 15MI/d. This represents over 15% of total demand.

Work will continue to monitor levels of leakage and intervene pro-actively to sustain this saving in the future.

### **Future work**

- A major capital investment investigation into operational and water quality issues within the Whitehillocks Water Operational Area. This will adopt a holistic approach to determine future investment needs for the area's water supply network and the way in which they should be delivered to ensure best value.
- Continuing work throughout Angus rehabilitating ageing water mains.
- Continuing work to refurbish service reservoir throughout Angus

### **Legislative/National Relevance:**

- **Water (Scotland) Act 1980**

### **Duties**

Supply of water for domestic purposes

Water supplied to be wholesome

Supply of Water for non-domestic purposes

Water for Fire-Fighting etc.

Conservation and Protection of Water Resources

Byelaws for preventing pollution, misuse, waste and contamination

Power to restrict use of hosepipes

- **Water Supply (Water Quality) (Scotland) Regulations 2001**

Tests to be taken

Where samples are taken

Parameters

Production of Annual Drinking Water Quality Report

**EC Drinking Water Directive**

**Water Byelaws**

## 23. Bathing Water Quality

### Why this Indicator is Important

A key sustainable issue for the coastal environment is to prevent contamination of coastal waters with pollution from human activities. Bathing water quality may be affected by discharges from sewage treatment works and storm overflows, rivers, agriculture and diffuse sources. The main concern is to avoid contamination of bathing waters by human or animal sewage.

In Scotland, 60 beaches are identified under the European Bathing Waters Directive (76/160/EEC) and in Angus, Carnoustie, Montrose and Arbroath (West Links) beaches are designated bathing waters. The environmental quality standards are set to protect the environment and public health, and include safe limits for microbiological, physical and chemical quality measures.

Monitoring of EU designated Bathing Waters and other bathing waters is carried out by SEPA. The bathing water at Montrose has consistently achieved the top standard required since 1999 and in 2005 was awarded Blue Flag status, one of only 7 in Scotland.

Water quality results for Angus Bathing Waters are given below:-

Identified Bathing Water Sites	Quality 2000	Quality 2001	Quality 2002	Quality 2003	Quality 2004	Quality 2005
Arbroath (West Links)						
Carnoustie						
Montrose						

Other Beaches in Angus	2003	2004	2005
Arbroath (Victoria Park)			
Lunan Bay			
Monifieth			
East Haven			

Key for Above	
	<b>Excellent Water Quality:</b> Indicates sample meets the <b>EC Guideline Standards:</b> (Total Coliforms less than or equal to 500 coliforms per 100ml; less than 100 faecal coliforms per 100ml; less than 100 faecal streptococci per 100ml)
	<b>Good Water Quality:</b> Indicates sample meets the <b>EC Mandatory Standards:</b> (Total Coliforms less than or equal to 10,000 coliforms per 100ml; less than 2,000 faecal coliforms per 100ml).
	<b>Poor Water Quality:</b> Indicates sample failed to meet the standard required for good water.

### **Legislative/National Relevance:-**

- European Bathing Waters Directive (76/160/EEC)
- UK Sustainable Development Indicator

## 24. Coastal Water Quality

### Why this Indicator is Important

There are many pressures upon the aquatic environment resulting from population, industry, agriculture, forestry, mining and other human activity. These cause environmental impacts, which in turn determine the quality of any particular part of the aquatic environment.

Coastal Waters are monitored in much the same way as Rivers, however not only does the classification process take into account the chemical quality of water, and the aesthetic and biology condition, it also takes into account bacteriological quality. There are many reasons why coastal waters have been polluted around Scotland's coast, from sewage discharges and chemical impacts, to contaminated land and industrial effluents. However, one of the major benefits to the Angus area is the introduction of a number of wastewater treatment plants serving the towns of Arbroath, Carnoustie and Montrose which discharge into the coastal waters.

The table below shows that the majority of the coastal waters around Angus are of a Class A standard.

### Coastal Water Quality Classification

Class	Description	Length (m)	
A	Excellent	54337	83%
B	Good	7578	12%
C	Unsatisfactory	3290	5%
D	Seriously Polluted	0	0%
Total of A+B+C		65,205	100%

### Angus Coastal Waters Classification 2004



### Legislative/National Relevance:-

- The Urban Waste Water Treatment Directive ([91/271/EEC](#)) amended by Commission Directive [98/15/EC](#) of 27 February 1998
- Water Framework Directive (2000/60/EEC)
- The Water Environment and Water Services (Scotland) Act 2003

## 25. Rivers of Good or Fair Quality

### Why this Indicator is Important

River water quality is important because rivers are a major source of water used for drinking and by industry. Rivers also support a wide variety of wildlife and are used extensively for recreation. Abstraction from and discharges to rivers and from the ground waters that support them, affects their flow and their quality.

In addition to their intrinsic value, rivers and burns also act as important wildlife corridors, enabling dispersion and migration of species. Within Angus, the river South Esk was designated as a Special Area of Conservation (SAC) for its internationally important populations of Salmon and Freshwater Pearl Mussel. The river Tay and its tributaries (linear) is also a candidate SAC (for further information see Tayside Local Biodiversity Action Plan).

In 1974 a river quality classification scheme was developed to monitor the quality of all rivers in Scotland. There are five classifications assigned ranging through Excellent, Good, Fair, Poor to Seriously Polluted. These classifications are based on the results of regular chemical and /or ecological surveys and recordings of the aesthetic appearance of the watercourses by SEPA.

The sampling data retrieved for 2004 (shown in the table below) shows that 45.51% of the watercourses in Angus are in excellent condition. This compares to the national figure of 30.1%.

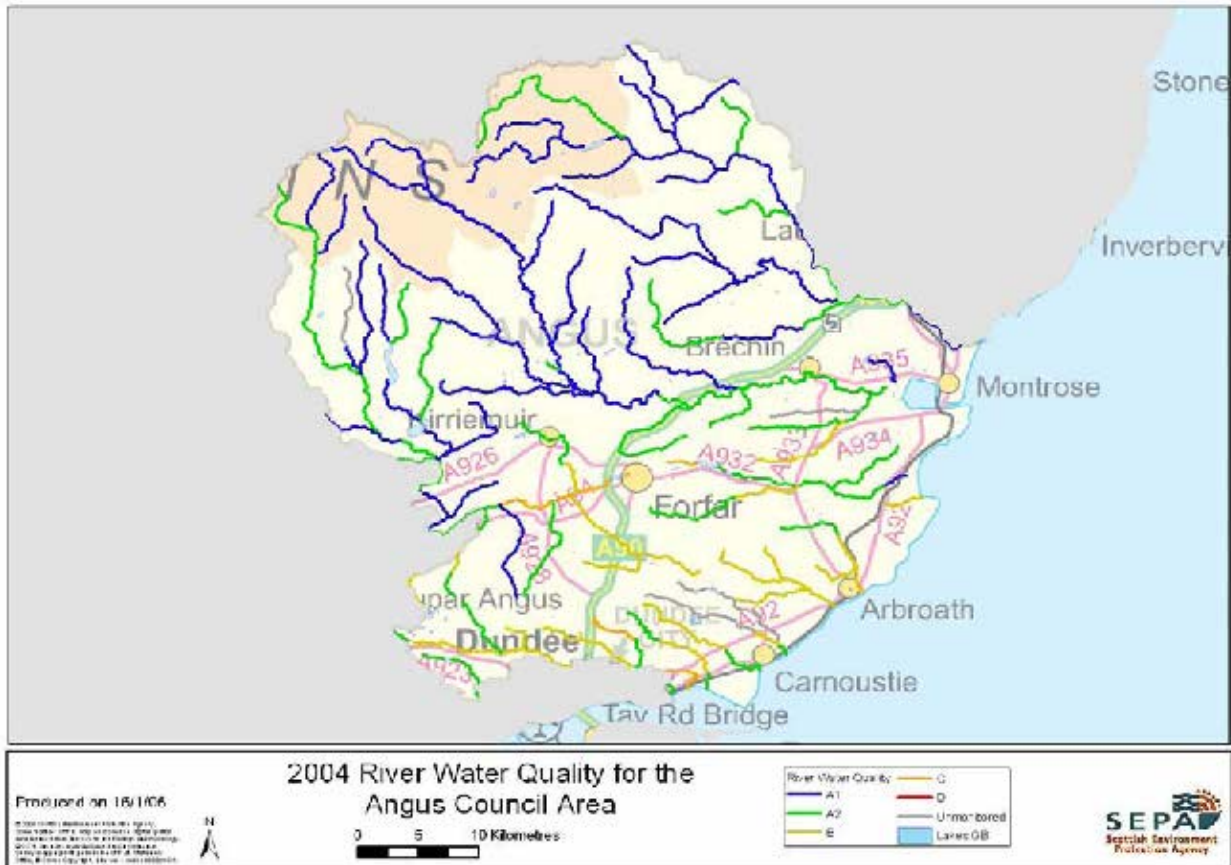
### **Angus River Water Quality Classification Categories**

<b>Class</b>	<b>Description</b>	<b>Lengths (Km)</b>
A1	Excellent	425.826 (45.51%)
A2	Good	303.79 (32.47%)
B	Fair	145.234 (15.52%)
C	Poor	23.032 (2.46%)
*	Unclassified	37.862 (4.04%)

Source: SEPA

The map overleaf shows the 2004 classifications for the major river catchments in Angus.

The Water Framework Directive establishes a new legal framework for the protection, improvement and sustainable use of waters. As a result new monitoring and regulatory regimes are being introduced along with River Basin Management Planning all aimed at improving and protecting Scotland's water environment.



### Legislative/National Relevance:-

- The Water Framework Directive (2000/60/EC)
- Water Environment and Water Services (Scotland) Act 2003 (WEWS Act)
- Control of Pollution Act 1974 (CoPA)
- Water Environment (Controlled Activities) Regulations 2005 (CAR)
- Countryside and Wildlife Act.
- Sites designated by Scottish Natural Heritage
- National and Local Biodiversity Action Plans
- National Headline Indicator

## 26. Number of Properties Affected by Flood Incidents

### Why this Indicator is Important

Since the mid 1980s Scotland has seen an increase in the number of recorded floods and high flows on many large rivers. Similar “flood rich” periods have occurred in the past, but these floods and high flows could occur increasingly in the warmer and wetter Scotland being predicted by climate scientists. Current predictions of climate change suggest that over the present century Scotland will experience more intense rainstorms, sea level will rise and the number of sea storms and tidal surges in the North Sea impacting the Angus coast will increase both in intensity and frequency. As a result, the threat of flooding both inland and around the coast and at coastal locations, the scale of wave overtopping will present a greater danger. As well as the danger to life and limb, increased flooding could potentially cause further damage to Scotland’s economy and society. Transport links, housing, the public water supply and commercial properties are especially vulnerable to such an increase in flooding. Although landowners are primarily responsible for flood protection, local and central government also have a role in reducing the adverse impact of floods.

The bodies involved with flooding and flood warning in Scotland include landowners; Fire Brigade; Hydro-Electric Operators; local authorities; Police; SEPA and the water authority.

The Scottish Executive predicts (in Climate Change: Flooding Occurrences Review 2001) that in Angus:-

Angus Area (km <sup>2</sup> )	Total No. of Properties	No. of Properties at Risk		Total No. of Properties at Risk
		Inland Floodplain	Coastal (<5m OD)	
2,184	49,828	1,750	6,639	8,389

SEPA has discretionary powers to implement flood warnings, which are issued using a set of four codes:-

Flood Watch                  Flood Warning                  Severe Flood Warning                  All Clear

Angus is split into two areas for the purposes of flooding, Highland Angus and Lowland Angus, and there are two formal flood warning schemes operating in Angus covering the South Esk and Arbroath.

The number and severity of flood codes issued during 2005 is shown in the table below.

Flood Codes Issued	2005	
	Highland Angus	Lowland Angus
Flood Watch	Jan, April, August, Oct, Dec	Jan, April, August, Oct, Nov, Dec
Flood Warning	-	-
Severe Flood Warning	-	-

In Angus flood defence structures have been constructed along both river and coastal sites. The major schemes inland are along the Brothock Water in Arbroath and the Barry Burn in Carnoustie. Major works are being planned for the River South Esk at Brechin. Along the Angus Coast there are coastal defence works in each of the main settlements and at various other locations. The Council’s strategy for dealing with these in the longer term is outlined in the Shoreline Management Plan. More recently major investment has taken place at Montrose, Monifieth and Carnoustie whilst a policy of managed retreat is being followed at the northern end of Montrose bay.

**Legislative/National Relevance:-**

- Flood Prevention and Land Drainage (Scotland) Act 1997
- Environment Act 1995
- Scottish Planning Policy (SPP) 7 – Planning & Flooding
- Coastal Protection Act 1949
- Local Government & Housing Act 1989
- Local Government (Scotland) Act 1973 s84
- Roads (Scotland) Act 1984
- Civil Protection in Peacetime Act 1986
- Water Industry (Scotland) Act 2002
- Sewerage (Scotland) Act 1968

## SECTION SEVEN : POLLUTION

### 27. Total Amount of 'Potentially' Contaminated Land (hectares)

#### Why this Indicator is Important

Contaminated land is defined as being any land which appears to the local authority in whose area it is situated to be in such a condition, by reason of substances in, on or under the land, that:-

- (a) significant harm is being caused or there is significant possibility of such harm being caused;  
or
- (b) pollution of controlled waters is being, or is likely to be caused.

In July 2000 a new statutory regime for the identification and remediation of contaminated land came into force. Part IIA of the Environmental Protection Act 1990 was inserted by section 57 of the Environment Act 1995. Local authorities are required to draft a strategy to show how they will deal with contaminated land within their area. This document outlines the actions proposed by Angus Council.

Following a desktop inspection of the Angus area for contaminated land some **2731 hectares** have been identified as potentially contaminated land sites. In this definition all previously industrially used land has been regarded as potentially contaminated to ensure that any future development proposals will require a remediation report when considered for planning approval. The inspection has resulted in a list of sites that will be prioritised for further investigation. The new performance indicator figures are due to be collated from 2006/7 may provide information for this indicator in future years.

#### **Legislative/National Relevance:-**

- Environment Act 1995

## 28. Nitrate Vulnerable Zones

### Why this indicator is important

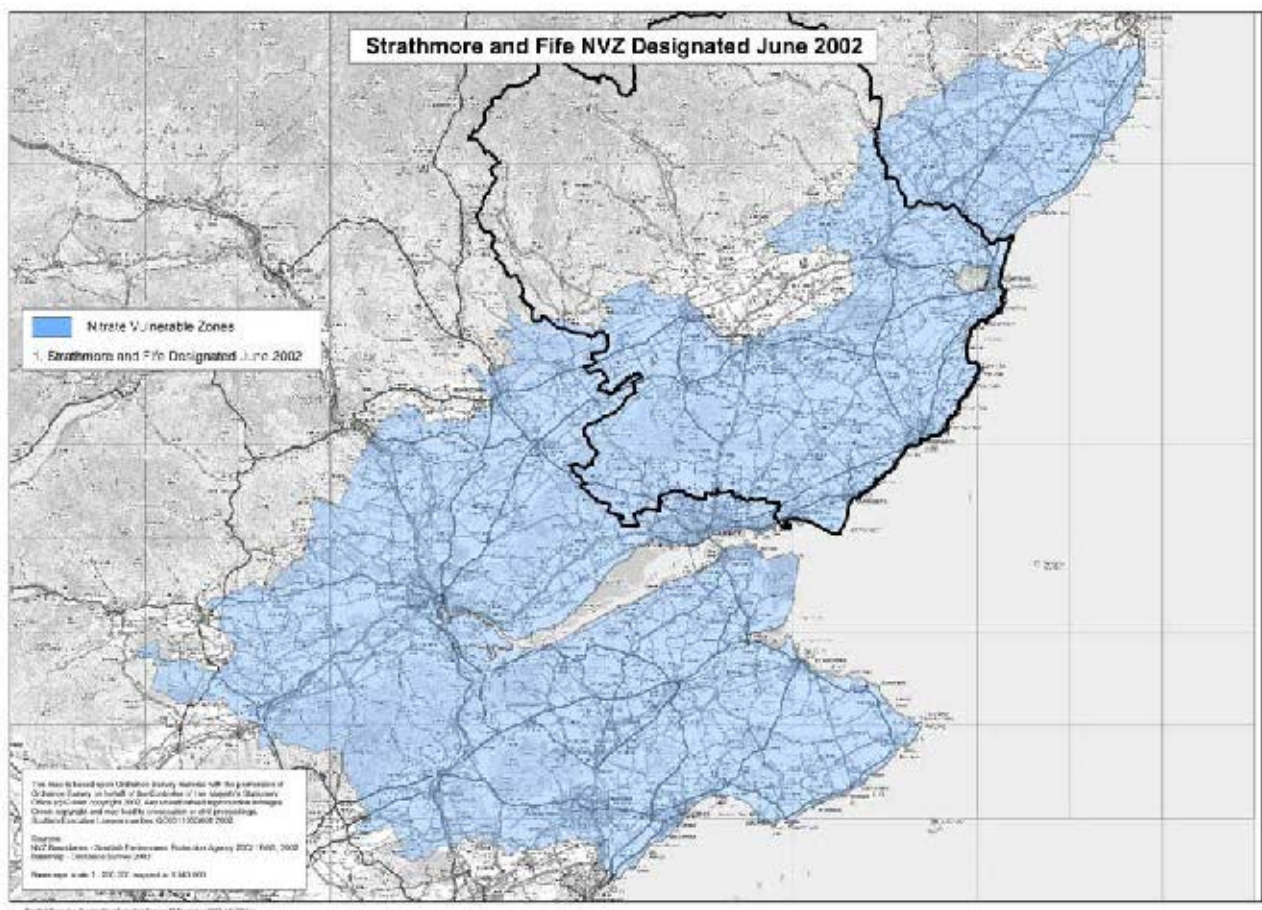
Fresh and marine waters can be polluted by nitrates from agricultural sources. In order to safeguard ground water and to prevent wider ecological damage in the form of eutrophication, freshwater and marine waters regulations have been put in place.

The EU Nitrates Directive 91/676/EEC requires SEPA to identify waters where nitrate levels exceed, or are likely to exceed, the levels set in the Directive. Any land draining to these waters must be designated as a Nitrate Vulnerable Zone (NVZ) and legally binding rules, known as Action Programmes, must be put in place to minimise nitrate leaching from agricultural land within a NVZ.

Across Scotland four NVZs have been designated:-

- Moray, Aberdeenshire, Banff and Buchan;
- Strathmore and Fife (which includes the majority of the Angus area);
- Lothian and Borders; and
- Lower Nithsdale.

The map below shows the extent of the Strathmore and Fife NVZ within Angus.



SEPA monitors nitrate concentrations in surface and groundwaters with the aim of reducing water pollution caused by nitrates from agricultural sources. One of the measures to reduce nitrate leaching is to specify periods when land application of certain types of fertiliser is prohibited.

**Legislative / National Importance:-**

- Protection of Water against Agricultural Nitrate Pollution (Scotland) Regulations 1996
- Designation of Nitrate Vulnerable Zones (Scotland) Regulations 2002
- Action Programme for Nitrate Vulnerable Zone (Scotland) Regulations 2003

## SECTION EIGHT : PUBLIC PERCEPTION

### 29. Public Concern About Noise

#### Why this indicator is important

Noise can have an adverse impact on peoples' quality of life. Excessive noise can cause annoyance and stress and may disturb sleep. Public concern about noise is a national indicator for quality of life and it is suggested that this could be compiled for complaints. However, this has its limitations, as complaints are mostly limited to things that people feel something can be done about it. Surveys done in England suggest that people annoyed by transport noise outnumber those annoyed by neighbours by a factor of twenty, yet complaints are almost entirely about neighbour noise. Complaints regarding Transport Noise, however, cannot be dealt with locally by Council staff. Factors other than noise levels are also likely to affect the numbers of complaints, for example, the promotion of 'complaint' hotlines or persistent callers making several complaints about single incidents. It is recommended therefore, that levels of complaints should be backed up with local surveys asking respondents their level of concern with different categories of noise in their area.

**The Civic Government (Scotland) Act 1982** empowers uniformed police officers to request the noise level from, for example, sound equipment to be reduced. If the request is ignored then the police may confiscate the offending equipment as evidence for a prosecution.

The Act covers annoyance caused by singing, playing musical instruments, television, and radio noise and also empowers uniformed police officers to deal with dangerous and annoying creatures where this affects people in a public place. Annoyance includes noise and the provisions can be used in relation to barking dogs. If the annoyance is associated with a residence, however, the complainant has to apply to the District Court for a Court Order (under a different subsection of the same section of the Act).

**The Environmental Protection Act 1990** defines noise as a Statutory Nuisance and empowers Local Authorities to investigate complaints. Where a nuisance is confirmed, Abatement Notices can be served upon its author(s), if informal action proves unsuccessful. Environmental Health Officers investigate such complaints and enforce these provisions of the Act.

**The Anti-social Behaviour (Scotland) Act 2004** empowers Local Authorities to investigate complaints arising from domestic properties due to the anti-social behaviour of their occupants. If prescribed noise levels are exceeded, Warning Notices can be served on the persons responsible. If not complied with, Fixed Penalty Notices are served. In addition, powers similar to that of the police for seizing and confiscating offending equipment are also available. An Anti-social Noise Team was established within the Environmental & Consumer Protection Department in July 2005 to enforce these provisions of the Act.

#### **Total Noise complaints by Area – 2003, 2004 & 2005**

Area	Number of Noise Complaints		
	2003	2004	2005
<b>Arbroath Office</b> (dealing with complaints from Arbroath/Carnoustie/Monifieth and associated landward area)	68	65	89
<b>Forfar</b> (dealing with complaints from Forfar/Kirriemuir/Glens and associated landward area)	64	62	64
<b>Montrose</b> (dealing with complaints from Montrose/Brechin and associated landward area)	79	99	137
<b>Total</b>	<b>211</b>	<b>226</b>	<b>290</b>

The figures for 2005 include 19 complaints dealt with by the Anti-social Noise Team during the period August – December 2005

### Total Noise complaints by Type – 2003, 2004 & 2005

Type of Complaint	Number of Complaints Received		
	2003	2004	2005
Agriculture (Not bird scarers)	1	2	9
Alarms (Intruder)	2	3	3
Car Stereos	1	1	1
Amplified Music	35	21	25
Children	1	1	1
Commercial Premises (inc Licensed)	5	12	11
Construction Noise	8	8	11
DIY	2	7	7
Dogs	39	52	50
Domestic (not DIY)	1	9	33
Doors banging	-	2	3
Enquiry	25	14	24
Industrial	58	76	70
Miscellaneous	8	10	24
Outdoor Event	5	1	4
Traffic	6	0	5
TV	-	3	0
Voices	-	2	1
<b>Total</b>	<b>211</b>	<b>226</b>	<b>271</b>

#### Legislative/National Relevance:-

- The Civic Government (Scotland) Act 1982
- Environment Protection Act 1990
- Anti-social Behaviour (Scotland) Act 2004

### 30. Satisfaction with the Quality of Surroundings \*

#### Why this Indicator is Important

Good quality surroundings are fundamental to a good quality of life. Noise, litter, graffiti, vandalism and dog fouling may be symptoms of wider problems, but can themselves promote a spiral of degradation with a high rate of crime reinforcing social exclusion and decline.

The following table has been extracted from Angus Citizen Panel 4<sup>th</sup> Survey Results (2003).

How common would you say the following things are in this neighbourhood?	Very Common	Fairly Common	Not Very Common	Not at all Common	Don't Know	Not Answered
Dog Fouling	24%	33%	26%	12%	0.9%	3%
Fire Raising	0.8%	2%	18%	69%	4%	6%
Groups of young people hanging around on the street	19%	27%	25%	25%	1%	3%
People who have been drinking or using drugs	10%	17%	27%	35%	6%	5%
Vandalism, graffiti or other deliberate damage to property	7%	17%	31%	38%	2%	5%
Rubbish or litter lying around	22%	31%	25%	19%	0.47%	3%
Noisy neighbours or loud parties	6%	6%	35%	48%	1%	4%

Please note: Figures do not add up to 100% due to rounding.

The survey also asked the Citizen's Panel "Overall, how involved do you feel in the local community?"

635 respondents replied:-

- A great deal 7%
- A fair amount 33%
- Not very much 49%
- Not at all 9%
- Don't know 1%
- Not answered 2%

#### **Legislative/National Relevance:-**

- Local Government (Scotland) Act 2003

\* Denotes no update

## LIST OF INFORMATION SOURCES

No.	Indicator	Source
1.	Total amount of vacant and derelict land (hectares).	Angus Council, Planning & Transport (SVDLS)
2.	New development split between Greenfield and Brownfield sites (Housing and Industry)	Angus Council, Planning & Transport
3.	Area of protected/key habitats, e.g. Sites of Special Scientific Interest, etc (hectares).	Angus Council, Planning & Transport
4.	Area designated as Country Parks (hectares).	Angus Council, Leisure Services
5.	Area (in hectares) of managed greenspace for leisure.	Angus Council, Leisure Services
6.	Visitor numbers to key/selected sites.	Visit Scotland Angus & Dundee
7.	Number of reported vandalism incidents.	Police/Angus Council, Chief Executive's Department
8.	Area managed under environmental schemes and organic farming.	Scottish Executive Environment & Rural Affairs Department
9.	Area covered by forest and by forest type.	Forestry Commission
10.	Scheduled Ancient Monuments in Angus.	Historic Scotland/Angus Council, Planning & Transport
11.	Listed Buildings in Angus.	Historic Scotland/Angus Council, Planning & Transport
12.	Percentage of total household waste recycled.	Angus Council, Environment & Consumer Protection
13.	Household waste generated per year (metric tonnes).	Angus Council, Environment & Consumer Protection
14.	Energy use per household.	Angus Council, Housing – HECA Report 2001
15.	Overall traffic volumes.	Angus Council, Roads
16.	Mode of Travel to Work in Angus	Census 2001
17.	Percentage of Angus households within 6 minutes walk of a bus service.	Angus Council, Planning & Transport
18.	How children travel to school.	Angus Council, Education
19.	Dedicated Cycle Lanes in Angus.	Angus Council, Roads
20.	Lengths of paths.	Angus Council, Planning & Transport
21.	Air quality monitoring.	Angus Council, Environment & Consumer Protection
22.	Water Supply	Scottish Water
23.	Bathing Water Quality.	Scottish Environment Protection Agency
24.	Coastal Water Quality.	Scottish Environment Protection Agency
25.	Rivers of good or fair quality	Scottish environment Protection Agency
26.	Number of properties affected by flood incidents.	Scottish Executive
27.	Total amount of 'potentially' contaminated land (hectares).	Angus Council, Environment & Consumer Protection
28.	Nitrate Vulnerable Zones	Scottish Environment Protection Agency
29.	Public concern about noise.	Angus Council, Environment & Consumer Protection
30.	Satisfaction with the quality of surroundings.	Angus Council, Chief Executive's Department

## GLOSSARY

**ANCIENT MONUMENTS****Categories of Monument**

The categories under which monuments are grouped are as in the list above. Note that a single monument will appear more than once in this list if it has features which relate to different categories, e.g. a chambered cairn with recent shielings will appear under 'prehistoric ritual and funerary' and also under 'secular'. The name of the monument will often, but not invariably, reflect such multiple attributions.

**Prehistoric Ritual and Funerary** includes cairns, chambered cairns, long cairns, ring cairns, barrows, chambered barrows, long barrows, mounds, ring enclosures, henges, stone circles and rows, standing stones and cup-marked stones.

**Prehistoric Domestic and Defensive** includes forts, duns, brochs, galleried dwellings, souterrains, houses, hut circles, homesteads, settlements, enclosures, palisaded enclosures, crannogs, field systems, cairnfields and cultivation terraces.

**Roman** includes military works, civil settlements and roads.

**Crosses and Carved Stones** includes crosses, cross slabs, market crosses and cross-incised stones, as well as Pictish symbol, stones, inscribed stones, tombstones and some miscellaneous sculptured stones. The category does not include cup-marked stones (Prehistoric Ritual and Funerary) or milestones (Industrial).

**Ecclesiastical** includes churches and chapels (sometimes prefixed 'old' or 'former' if there is likely to be confusion with more recent sites nearby), monasteries, nunneries, priories, burial grounds and burial enclosures. Note that churches in ecclesiastical use are excluded from the scope of the Schedule.

**Secular** includes non-prehistoric works which are basically military or defensive such as castles, forts and mottes; works which are basically domestic such as houses and settlements; earthworks, homestead moats, towers and bastles which fall between the military and the domestic; and a range of other works such as barracks, artillery mounds, roads, bridges, tollbooths, dovecotes, Martello towers, prisons, hospitals and sundials.

**Industrial** includes canals and associated structures such as graving docks, tunnels, bridges and signal lamps; mills of various kinds, pottery kilns, engine houses, engines and railway stations. It also includes some iron bridges. This category includes monuments particularly characteristic of the Industrial Revolution, but also earlier sites representing the processing and manufacturing side of Medieval life, such as salt pans and early mines, as well as some important industrial monuments of more recent date, for example a whaling station and gasworks.  
(Source: Historic Scotland 1999)

**LISTED BUILDINGS****Definition of Categories**

**Category A** – Buildings of national or international importance, either architectural or historic, or fine little-altered examples of some particular period, style or building type.

**Category B** – Buildings of regional or more than local importance, or major examples of some particular period, style or building type which may have been altered.

**Category C(S)** – Buildings of local importance, lesser examples of any period, style, or building type, as originally constructed or altered; and simple, traditional buildings which group well with others in categories A and B or are part of a planned group such as an estate or an industrial complex. The C(S) category includes the best of the buildings previously not statutorily listed but given a C category (this latter category is being phased out in the course of the resurvey). In addition some buildings are designated “B” for group”: this category is also being phased out and those buildings (if still considered to merit inclusion in the lists) are being assigned to one of the three categories.

**DETR:** Department of the Environment, Transport and Regions.

**NHER:** National Home Energy Rating.

## THE WATER FRAMEWORK DIRECTIVE

The Water Framework Directive (2000/60/EC) is a wide-ranging piece of European environmental legislation which became law in Scotland at the end of 2003 through the Water Environment and Water Services (Scotland) Act 2003 (WEWS Act). The Directive establishes a new legal framework for the protection, improvement and sustainable use of surface waters, transitional waters, coastal waters and groundwater across Europe in order to:-

- Prevent deterioration and enhance status of aquatic ecosystems, including groundwater;
- Promote sustainable water use;
- Reduce pollution; and
- Contribute to the mitigation of floods and droughts.

The main environmental objectives are to protect and improve Scotland's water environment. This will include preventing deterioration of aquatic ecosystems and, where possible, restoring surface waters and groundwater damaged by pollution, water abstraction, dams and engineering activities to 'good status' by 2015.

### Regulatory Regimes

Regulatory regimes are required to control activities not previously regulated in Scotland, to ensure that WFD objectives are met. These regimes cover abstractions, impoundments, and engineering works as well as a new control regime for point source discharges to replace the existing Control of Pollution Act (CoPA) Act 1974.

### River Basin Characterisation

Results from the environmental pressures and impacts analysis (which will identify those water bodies that are at risk of failing the environmental objectives set out in the Directive) and the economic characterisation (links economic activity with the environmental impacts that result from it) will lead SEPA into designing a monitoring network and identifying where there is a need to take improvement action.

### Monitoring and Classification

The classification system will cover all surface water and groundwater bodies, and be based on a new Ecological Classification system. The new system, with five quality classes underpinned by monitoring a range of biological quality elements, will be supported by measurements of physico-chemistry, hydrology and morphology.

### River Basin Management Planning

Each River Basin District must have a River Basin Management Plan (RBMP). These plans will set out, amongst other things, the environmental objectives (targets) for all water bodies, present the Programme of Measures (actions) to achieve these objectives and display the monitoring programmes set up to assess progress. Angus falls within the Tay River Basin District.

Crucially the RBMP's must be produced in a participative and consultative manner. SEPA is charged with leading and developing this new basin planning process in Scotland and will seek to work with stakeholders to produce effective and deliverable plans. Delivering the Programme of Measures will rely on a number of organisations, individuals and other plans and planning processes working together to shared objectives.

In fulfilling these duties, SEPA will regulate activities such as abstraction, impoundment and engineering activities, as well as pollution, from 1 April 2006 under the Water Environment (Controlled Activities) Regulations 2005 (CAR).

From 1 April 2006, the following activities will be controlled:-

- abstractions from surface and groundwater;
- impoundments of rivers, lochs, wetlands and transitional waters;
- groundwater recharge;
- engineering in rivers, lochs and wetlands;
- engineering activities in the vicinity of rivers, lochs and wetland which are likely to have a significant adverse impact upon the water environment;
- activities liable to cause pollution;
- direct or indirect discharge of List I substances to groundwater; and
- any other activities which directly or indirectly is liable to cause a significant adverse impact upon the water environment

*'You cannot change the amount  
of matter in the universe, you  
can only change its state'*

*Sir Isaac Newton - Entropy Law*

