

# Consultation Report

*Prepared for*

Angus Council

26<sup>th</sup> October 2016



Burderop Park  
Swindon  
SN4 0QD





# Contents

Section	Page
<b>Acronyms and Abbreviations.....</b>	<b>iv</b>
<b>Introduction.....</b>	<b>1-1</b>
1.1    What is this document?.....	1-1
<b>How we consulted with the public.....</b>	<b>2-1</b>
2.1    What methods were used?.....	2-1
2.1.1    Website.....	2-1
2.1.2    Hard copies for viewing.....	2-1
2.1.3    Public events and exhibition posters.....	2-1
2.1.4    Presentation to planners.....	2-2
2.2    How did we consider consultation responses?.....	2-2
<b>How we consulted with statutory consultation authorities.....</b>	<b>3-1</b>
3.1    Scottish government SEA gateway.....	3-1
<b>Summary of responses.....</b>	<b>4-1</b>
4.1    General responses.....	4-1
4.1.1    SMP2 Policy.....	4-1
4.1.2    Environment and heritage.....	4-1
4.1.3    Planning.....	4-2
4.1.4    Consultation.....	4-2
4.2    Area specific responses.....	4-3
4.2.1    Montrose Golf Course.....	4-3
4.2.2    Rossie Island.....	4-4
4.2.3    East Haven.....	4-4
<b>Appendices</b>	
A    Consultation Materials	
B    Planners Presentation	

# Acronyms and Abbreviations

CSG	Client Steering Group
HES	Historic Environment Scotland
LDP	Local Development Plan
SEA	Strategic Environmental Assessment
SEPA	Scottish Environmental Protection Agency
SMP2	Shoreline Management Plan 2
SNH	Scottish Natural Heritage

# Introduction

## 1.1 What is this document?

Angus Council and its partners have consulted with stakeholders throughout the development of the Angus Shoreline Management Plan 2 (SMP2) (see Appendix B to the SMP2) and with the public during a public consultation period.

This consultation report describes how we have consulted with the public during the public consultation stage (19th April 2016 – 24th June 2016) and with the consultation authorities via the Strategic Environmental Assessment (SEA) Gateway, to inform them about the draft SMP2 and associated Environmental Report, and give them the opportunity to comment on the proposed policies.

Section 2 describes what we have done and Section 3 summarises the responses we received and how we are taking account of these in finalising the SMP2.



# How we consulted with the public

## 2.1 What methods were used?

The following methods of consultation were used during the SMP2 public consultation:

- Website
- Hard copies of documents for viewing
- Public events
- Presentation to planners
- Exhibition posters
- Consultation response forms

### 2.1.1 Website

The Angus Council website ([www.angus.gov.uk](http://www.angus.gov.uk)) hosted information on the SMP2 consultation, consultation events, and downloadable versions of the draft SMP2 consultation documents, appendices and maps.

The public were encouraged to take part in an online Survey Monkey survey linked to the webpage. The survey questions included:

- What is the main reason for your interest in the Angus Shoreline Management Plan?
- Which management unit are you commenting on?
- Do you agree or disagree with the policies presented for this unit and why?
- How useful have you found the draft SMP, supporting documents and materials presented as part of this consultation?
- Any other comments?

44 surveys were submitted, however only 18 of these were complete. 26 were incomplete, providing no useable information.

A consultation response form was also available to download or complete online. A copy of the consultation response form is provided in Appendix A. 20 response forms were received, with a number providing additional attachments of comments for consideration.

### 2.1.2 Hard copies for viewing

Full hard copies of the Shoreline Management Plan and supporting appendices were temporarily available to view at Angus Council County Buildings in Forfar during the consultation period, between 10.00 and 14.00 Monday to Friday.

### 2.1.3 Public events and exhibition posters

Three consultation events were held along the SMP2 frontage to provide a forum for the public to come and meet the SMP project team, ask questions and an opportunity to view hard copies of the SMP2 documents. The consultation events were advertised on the Angus Council website and its respective Facebook and Twitter accounts. Locations and dates were as follows:

- Montrose – Monday 30th May 2016
- Carnoustie – Tuesday 31st May 2016

- Arbroath – Wednesday 1st June 2016

A series of exhibition posters were produced by the SMP2 team. The posters showed what an SMP is and why it is needed, how the SMP2 has been developed, the 4 policy options available, details of where further information can be found and how feedback can be given. Copies of these posters are included in Appendix A.

### 2.1.4 Presentation to planners

A presentation on the SMP2 was given to Angus Council planners at Angus Council offices in Forfar on Wednesday 31 May 2016. The presentation provided a broad overview of SMP2, a copy of which is provided in Appendix B and gave them an opportunity to speak to the SMP2 team, ask further questions and provide comments.

## 2.2 How did we consider consultation responses?

Written correspondence and consultation response forms were sent to Angus Council, the authority responsible for managing the SMP2. An email address was set up for emailed consultation responses and a survey monkey survey was submitted through the Angus Council website ([www.angus.gov.uk](http://www.angus.gov.uk)).

All consultation responses were collated and reviewed. People who responded received a standard reply from Angus Council. This acknowledged their response and informed them that a formal response document would be produced after the end of the consultation. However, each response received was considered individually.

All responses received were recorded and addressed as detailed below:

- Upon receipt each response was given a unique reference number.
- Details of each response were entered into a Consultation Response Log (e.g. date, name, contact details, area of interest and comment).
- Each comment was considered individually and any actions required were noted.
- At the end of the consultation period the responses were reviewed and categorised according to geographical location.
- Proposed changes to the Plan were reviewed and agreed by Angus Council.
- The agreed changes to policy were discussed with and agreed by the Client Steering Group (CSG) before finalising the SMP and making it available to the public.



# How we consulted with consultation authorities

## 3.1 Scottish government SEA gateway

The Environmental report was submitted to the Scottish Government SEA Gateway on 30 June 2016 and consultation authorities were given until the 12<sup>th</sup> August to provide comment.

Responses on the Environmental Report were received from Scottish Environmental Protection Agency (SEPA), Scottish Natural Heritage (SNH) and Historic Environment Scotland (HES).

After adoption of the final Plan, Angus Council, as Responsible Authority, will be required to take account of the findings of the Environmental Report and of views expressed upon it during the consultation period. This will be in the form of a 'SEA Statement' which will be distributed to the Consultation Authorities via the Scottish Government SEA Gateway after adoption of the SMP2.



# Summary of responses

The following sections provide a summary of general and location specific responses and issues raised during public consultation, as well as the SMP2 Team's comments on these.

## 4.1 General responses

Below are summaries of general responses and issues raised during public consultation and the SMP2 Team's comments on the responses. These have been split into the following sub-sections.

- SMP2 Policy
- Environment and heritage
- Planning
- Consultation

### 4.1.1 SMP2 Policy

Several responses were received expressing support for the draft SMP2 policies and / or the draft SMP2 as a whole.

*'Generally sound approach but a difficult balance between accepting natural processes and environmental variation and protecting property and infrastructure. These interests sometimes conflict and require contradictory solutions'. **Representative of a group or organisation***

*'Generally support the policies'. **SNH***

*'Having reviewed the Shoreline Management Plan and associated Policy Statements, I can confirm that we have no objections to the policies proposed'. **Aberdeenshire Council Archaeology Service***

*'Generally, we consider this to be a positive document from the perspective of River Basin Management Planning (RBMP). We are satisfied with the proposed management policies and will be minded of them in our responses to future planning application consultations'. **SEPA***

*'Historic Environment Scotland welcome the preparation of the second shoreline management plan for Angus and recognise the threat posed by climate change and in particular increased coastal erosion on the historic environment resource of Scotland'. **HES***

*'We are mostly satisfied that the Environmental Report (ER) provides a satisfactory assessment of the potential significant environmental effects arising from the Shoreline Management Plan 2 (SMP2)'. **SNH***

#### **SMP2 Team comments**

The SMP2 Team would like to acknowledge and welcome the support given for the Angus Shoreline Management Plan 2.

### 4.1.2 Environment and heritage

Comments from consultation authorities primarily raised concerns over some data presented in the environmental baseline report which is out of date and now superseded and the need for inclusion of further mitigation measures in relation to the historic environment.

*'Historic Scotland responded to the scoping consultation on 1 August 2012. Given the length of time that has elapsed since this consultation it is noted that the baseline information for the historic environment has changed since that point. It is noted that the baseline utilised for the assessment*

*needs to be updated to reflect the current historic environment designations in the study area. Subsequently a number of the findings of the assessment may be required to be reappraised with mitigation and monitoring advice and requirements updated accordingly.* **HES**

*'There have been some changes to transitional water bodies. In addition, there have been changes in status and objectives for many water bodies, which should be considered.'* **SEPA**

*In a number of locations, 'continued erosion will have an impact on this historic asset and as such it would be beneficial for the site to be subject to detailed archaeological recording at an early stage prior to further erosion damaging the site'.* **Aberdeenshire Council Archaeology Service**

#### **SMP2 Team comments**

The SMP2 Team acknowledge that the environmental baseline report, having been written a few years ago now, will need to be updated with new information where appropriate. The further mitigation measures suggested in the responses will also be considered for inclusion in the final Plan.

### 4.1.3 Planning

The role of the SMP in influencing future development decisions was noted, along with a request by Angus Council to include guidance on development approaches under each policy.

*'Tables for each Management Unit do not set out clearly what the approach to development will be within the forecast intervals. It would be useful to include this.'* **Angus Council Development Planning**

*'The link between preparation of future Local Development Plans and the policy approach outlined in SMP is welcome and noted. It is important that future LDPs do not promote development in areas subject to Coastal Flooding or Erosion where no intervention or protection measures are proposed. The SMP is a material consideration in preparing LDPs and assessing development proposals. Important that the SMP provides clear well illustrated guidance on approach to coastal development in each Management Unit including future predicted coastline.'* **Angus Council Development Planning**

*'It is vitally important to the success of the Plan to ensure that there should be no new development in the areas at risk and future risk areas.'* **SNH**

*'Planning has a role to play in reducing overall risk of flooding and erosion by ensuring that inappropriate development does not take place in areas at risk.'* **SNH**

#### **SMP2 Team comments**

The SMP2 Team will include further guidance on the approach to development under the different policies to aid future planning decisions.

### 4.1.4 Consultation

The public exhibition events and use of the website were both found to be helpful to some responders and not helpful to others. A number of responses suggested that the public events were not publicised well enough and stakeholders were not involved sufficiently during the development of the plan.

*'The proposals appear to have the justification of research and analysis. But community involvement has not been publicised well via recognised media - local press, community facebook page'* **Member of Carnoustie community development Trust**

*'This is a very important issue for Montrose and should be communicated in the press and social media in order to ensure that a fully representative view is assessed'* **Montrose resident**

*'We need to involve all interested parties with all stakeholders to find a way that is effective and commercially viable to protect the dunes at Montrose Beach thereby protecting the past assets, the golf courses and housing etc.'* **Member of Royal Montrose Golf Club**

*'It would be helpful if hard copies could be made available to all interested communities and organisations. At the very least, local libraries should hold a copy for the public to view'* **East Haven Together**

#### **SMP2 Team comments**

To advertise the consultation and make people aware of meetings, Council officers, in addition to publicising the meetings via social media and the SMP2 website, attended Community Council meetings during the consultation period while notifying others outside of the Coastal burghs and villages. Hard copies of the SMP2 were available to view from the Angus Council offices. The SMP2 Team however, acknowledge that additional advertising and publicising of the events would have been beneficial. These lessons will be taken forward for future consultations.

The SMP2 team included key stakeholders, consultation authorities and environmental bodies whilst developing the draft SMP2. Due to the technical nature of choosing proposed policies, we chose to involve members of the public only once the plan had been developed. The public consultation stage gave local people and other stakeholders an opportunity to have their say on the proposed policies.

## 4.2 Area specific responses

Below are summaries of area specific responses and associated issues raised during public consultation and the SMP2 Team's comments on the responses. These primarily related to the Montrose Golf links and Rossie Island frontages in Montrose and the East Haven coastal frontage.

### 4.2.1 Montrose Golf Course

Consultees were concerned with the draft policies in this area. The draft plan is to manage erosion risks to Montrose Golf Course through a managed realignment policy. The main concerns and comments received are summarised below:

- There were a number of comments noting that the importance of Montrose Golf Course as one of the oldest courses in the world and major asset to Montrose is not recognised in the SMP2.
- The SMP neglects to emphasise the importance of the Golf Club dunes as a line of protection to Montrose town.
- The dredged sediment from the South Esk is being taken out of the system and dumped in Lunan Bay, effectively exacerbating the erosion issue at Montrose.
- The majority of responders from Montrose were angered by the perceived lack of action in doing something along this frontage to address the erosion.
- Most agreed that short term intervention is needed to address the erosion issue, suggesting a variety of both hard and soft engineering methods.

### **SMP2 Team comments**

The draft policy for MU1/2 Montrose Golf Links is managed realignment to manage erosion while maintaining the dunes as a line of defence. The SMP2 team has reviewed the consultation responses and we believe that the proposed policy is still appropriate. The policy will help maintain the integrity of the dunes as a natural defence while maintaining protection to the majority of the golf course into the long term through minor works such as recharge of dredged sediment from the South Esk to help reduce erosion rates and through adaptation / relocation of parts of the golf course in the future.

No changes to the draft policies at Montrose Golf Course have been made following public consultation. However, the potential for beneficial use of dredged sediment along the golf frontage through recharge will be highlighted. The importance of the golf club to Montrose and the role the dunes play in reducing flood risk to the northern parts of the town will also be acknowledged in the plan.

## 4.2.2 Rossie Island

A small number of written responses related to Rossie Island. The policy of hold the line is essentially agreed with in principle, however concern was raised relating to the statement that ‘the responsibility of maintaining these private defences would lie with the associated landowner and not Angus Council’. The main concerns raised included:

- The back of Rossie Island is at risk of erosion and some form of defence is required to help protect the remaining land.
- There is ongoing confusion and discussion over who is responsible for the road and the shoreline.
- The road is at risk of severe erosion during strong storm conditions.

### **SMP2 Team comments**

The draft policy for MU 2/5 Rossie Island is to hold the line by permitting appropriate maintenance of localised private defences through limited intervention, with the responsibility of maintaining defences with the associated landowner and not Angus Council.

This stretch of coastline has a number of land owners, including land held under Common Good, which is managed by Angus Council. Angus Council Officers and Elected Members have met with landowners in this area on a number of occasions highlighting that coastal protection is the responsibility of the landowner, including the Common Good, as per the Coast Protection Act 1949 and not Angus Council as the Coast Protection Authority.

No changes to the draft policies at Rossie island have been made following public consultation.

## 4.2.3 East Haven

A collective written response was received from the local community group East Haven Together expressing their concern over the implications of a no active intervention policy for East Haven. The main comments raised were as follows:

- The community are undertaking adaptive management measures including marram grass planting on the dunes and this should be recognised through the recommended policy.
- Following the first Angus SMP East Haven residents expressed a wish to be more involved with any future shoreline management planning, this didn't happen.

### **SMP2 Team comments**

The intent of the draft policy for MU6/4 (b) East Haven is to allow natural coastal evolution through a no active intervention policy. Following review of consultation responses and further information submitted during the public consultation, the no active intervention policy at East Haven has been revised.

Evidence put forward by the East Haven Together community group indicates that they currently undertake adaptive management measures to maintain the integrity of the dune system as a natural defence. The SMP2 Team agree that the SMP2 should recognise this valuable work undertaken by the community and should not preclude future limited adaptive intervention under a no active intervention policy. A change to a managed realignment policy would allow the continuation of limited intervention by the local community to conserve and enhance the dunes as a natural defence.

The SMP2 team included key stakeholders, consultation authorities and environmental bodies whilst developing the draft SMP2. Due to the technical nature of choosing proposed policies, we chose to involve members of the public and local communities once the plan had been developed. The public consultation stage gave local people and other stakeholders an opportunity to have their say on the proposed policies.

The following revision to the draft policies has been made as a result of the consultation:

**MU6/4 (b) – East Haven – changed to managed realignment (0-20 years; 20 to 50 years and 50 to 100 years).**

# Appendix A – Consultation Materials



# ANGUS SMP2 CONSULTATION RESPONSE FORM

Your **views and comments** will play an important part in the development of the SMP for the Angus coastline.

**Contact details** – Comments received may be incorporated into the SMP although personal details will not be published but may be kept on file.

**1. Name** (and organisation if relevant)

**2. Contact details** (address, telephone number, email)

**3. What is the main reason for your interest in the Angus Shoreline Management Plan?**

- Resident within the Shoreline Management Plan area – postcode: .....
- Landowner within the Shoreline Management Plan area – postcode: .....
- Represent groups or organisations that are involved (please specify): .....
- .....
- Other (please specify): .....

**4. Which Management Unit are you commenting on?** (e.g. MU5/1 etc).

**5. Do you agree or disagree with the policies presented for this Unit,**

**In the short term period**

Agree                       Disagree

**In the Medium term period**

Agree                       Disagree

**In the long term period**

Agree                       Disagree

**6. Please tell us your reasons behind the answers to Q5.**

(If necessary, please continue on a separate sheet and feel free to attach any supporting information to this form)

**7. How useful have you found the draft SMP and supporting documents and materials presented as part of this consultation?**

	<b>Public Exhibition</b>	<b>SMP website</b>
5 (very helpful)	<input type="checkbox"/>	<input type="checkbox"/>
4	<input type="checkbox"/>	<input type="checkbox"/>
3	<input type="checkbox"/>	<input type="checkbox"/>
2	<input type="checkbox"/>	<input type="checkbox"/>
1 (not helpful at all)	<input type="checkbox"/>	<input type="checkbox"/>

**Any other comments:**

**8. Are you happy for your contact details given above to be used to keep you informed of future progress of this SMP and for future similar coastal management initiatives?**

Yes  No

If you have any comments on the Angus SMP, please complete this form and either return it during one of the public exhibitions, or

by post to: Angus Council, County Buildings, Market Street, Forfar, DD8 3WR

or by email to: [Roads@angus.gov.uk](mailto:Roads@angus.gov.uk) by the Friday 24 June 2016

An electronic version of the form can also be found at [www.angus.gov.uk/hys](http://www.angus.gov.uk/hys) which can be submitted online.

**Thank you for taking the time to participate in the SMP consultation process.**

# Angus Shoreline Management Plan SMP2



## What is a Shoreline Management Plan?

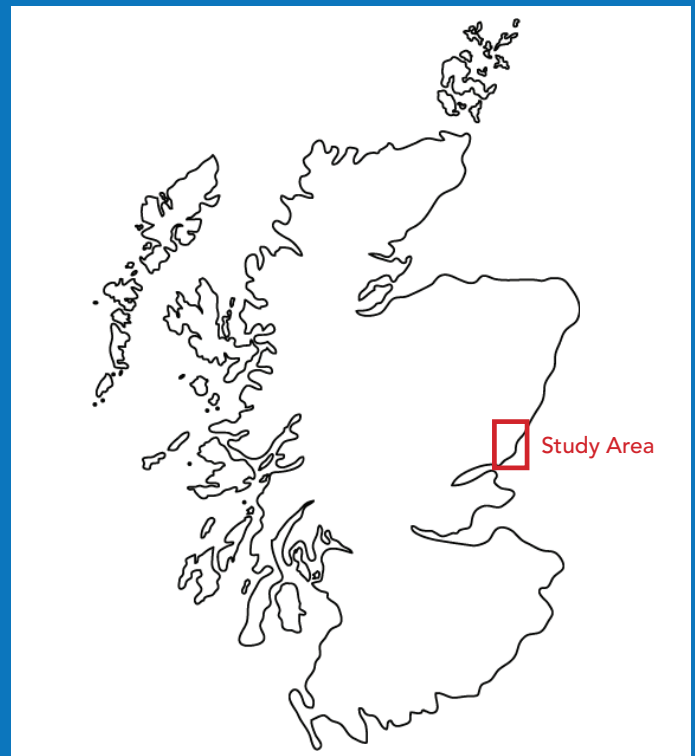
A Shoreline Management Plan (SMP) is a policy document for coastal defence management. It takes account of other existing planning initiatives and legislative requirements, and is intended to inform wider strategic planning. It does not set policies for the management of issues such as development or land drainage.

The main objective of an SMP is to identify sustainable long-term management policies for the coast. It is inevitable that the plan will recommend changes to the current approach in some areas, however, it will help manage these so that the people, places, industry and wildlife affected can adapt at a reasonable pace.

This approach avoids tying future generations into inflexible and expensive options for defences.

### Angus SMP2

The Angus SMP2 covers the shoreline which extends between Milton Ness in the north and Broughty Castle, Broughty Ferry in the south.



# Angus Shoreline Management Plan SMP2



## The Changing Coastline

The coastline is constantly changing from the effects of waves, tidal currents and the changing climate.

Coastal changes usually take place over many years, however, building of coastal defences to control flooding and erosion have also had an influence on the evolution of our coastline.

Whilst these changes continue, social, economic and environmental pressures are increasing in coastal areas. People enjoy living by and visiting the coast so there is always pressure for more housing. As international trade increases, so does the demand for port space and associated coastal-based industry. Such development often places stress on natural coastal habitats that are unique and of national and international importance.

### Climate Change

As sea levels rise under climate change, beach widths in front of defences will narrow and the defences themselves will become increasingly exposed and vulnerable.

Sea level rise therefore not only means that higher and larger defences will be needed to provide the same standard of protection to assets along the shoreline, but that defences will need to be maintained more frequently or be improved to withstand more frequent attack.

Even in locations where defences are improved the consequences of breaches or overtopping will increase in future.



# Angus Shoreline Management Plan SMP2



## What does all this mean?

Even if the defences are continually improved where they are now, it is likely that the beaches and coastal environments in front of them will be changed by the effect of the sea. This means we need a long-term plan to co-ordinate how our coast is managed.

This Shoreline Management Plan will identify how our coastline can be best managed over the next 100 years in order to prevent the loss of beaches and other coastal habitats, and to best protect coastal communities.

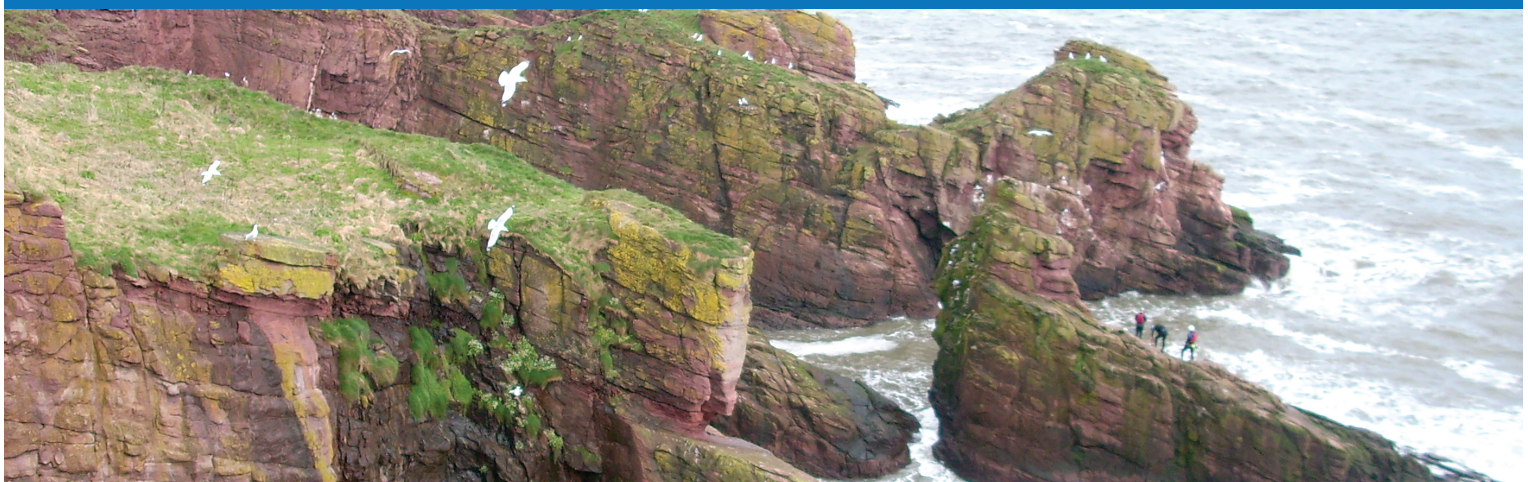
In Scotland there is no single agency with responsibility for coastal protection and flood defence, no dedicated budget for

flood defence, and many coastal defences are privately owned. This has led to a piecemeal approach to shoreline management in the past.

A number of Scottish local authorities including Angus Council have therefore developed Shoreline Management Plans to guide the management of their coasts.

### **Working in Partnership**

Development and delivery of this SMP has been led by Angus Council, with support, guidance and review provided by a Client Steering Group who has been involved throughout the development of the plan.



# Angus Shoreline Management Plan SMP2

## Policy Options

There are four generic policies that can be considered within the Shoreline Management Plan. One of these four policies must be assigned for each of the three time periods (short, medium and long term). The policies can change between each time period.

### Hold the Line

Maintain the existing defence line. Defences are maintained or upgraded / replaced in their current position.



### No Active Intervention

A decision not to invest in providing or maintaining defences. Where there are currently no defences, this policy means that the shoreline will continue to evolve naturally.



### Managed Realignment

Allow the shoreline to change with management to control or limit that movement.

### Advance the Line

Build new defences seaward of the existing defences.

# Angus Shoreline Management Plan SMP2



## How can I get involved?

Angus Council are holding a number of public consultation events to present the new Shoreline Management Plan for your coastline.

Our coast is changing and climate change and sea level rise may increase flood and erosion risks along the coast, directly effecting the places where people live work and play.

This Shoreline Management Plan sets out how these flood and erosion risks could be managed on your coast.

To date, the Client Steering Group has represented your interests, however, we are now consulting the public on the findings of the plan and would welcome your views.

This is your opportunity to help influence the management of your coast.

The SMP documents are available to view and download on the Angus Council website [www.angus.gov.uk](http://www.angus.gov.uk), or in hard copy at **Angus Council County Buildings, Forfar, DD8 3WR**. Please Call **01307 473378** to arrange to view.

We invite you to review the Plan and provide your feedback either by email:

**[roads@angus.gov.uk](mailto:roads@angus.gov.uk)**

or by post to the Angus Council address above.



## Appendix B – Planners Presentation



# Angus Shoreline Management Plan2

Angus Council, May 2016



## Outline of the presentation

- Why do we need a SMP?
- What is the Angus SMP2?
- What area does the SMP cover?
- What will the SMP do?
- What are the SMP policies?
- How was the SMP developed?
- What is included in the draft SMP document?
- What is the preferred plan?
- How are we consulting with the public?
- What's happens next?

2

## Why do we need a SMP?



### **In Scotland:**

- there is no single agency with responsibility for coastal protection and flood defence
- no dedicated budget for flood defence
- many coastal defences are privately owned

This has led to a piecemeal approach to shoreline management in the past.

3

## What is the Angus Shoreline Management Plan 2?

### **Angus SMP2:**

- Is a long term, large scale assessment of the risks associated with erosion and flooding at the coast.
- Presents policies to help manage these risks to people and to the developed, historic and natural environment in a sustainable manner.
- Updates the 2004 Angus SMP1.
- It will inform wider strategic planning.
- Advocates sustainable management of the coast.

4

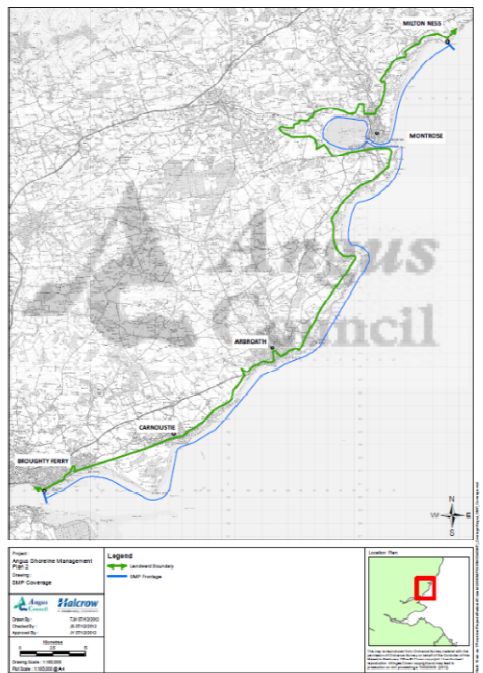
## What area does the SMP cover?

This includes part of the:

Aberdeenshire Council coast from **Milton Ness** to the River North Esk

Angus Council coast from the River North Esk to the Dighty Water

Dundee City Council coast from the Dighty Water to **Broughty Castle**



5

## What will the SMP do?

- identify sustainable and deliverable policies for managing coastal risks
- work with natural processes wherever possible
- promote management policies for the coastline over the next 100 years
- promote policies that are technically sustainable, environmentally acceptable and economically viable
- consider known legislation and constraints, both human and natural



6

## What will the SMP do?



- will not promise what cannot be delivered.
- identifies the consequences of putting the preferred policies into practice
- sets out procedures for monitoring how effective these policies are
- discourages inappropriate development in areas where the flood and erosion risks are high
- highlights areas where there are gaps in knowledge about the coast and produce an action plan to address these gaps.

7

## What are the SMP policies?

There are four generic policies that can be considered within the Shoreline Management Plan.

One of these four policies must be assigned for each of the three time periods (short, medium and long term). The policies can change between each time period.

### Hold the Line

Maintain the existing defence line. Defences are maintained or upgraded / replaced in their current position.

### Advance the Line

Build new defences seaward of the existing defences.



8

## What are the SMP policies?

There are four generic policies that can be considered within the Shoreline Management Plan.

One of these four policies must be assigned for each of the three time periods (short, medium and long term). The policies can change between each time period.

### No active Intervention

A decision not to invest in providing or maintaining defences. Where there are currently no defences, this policy means that the shoreline will continue to evolve naturally.

### Managed Realignment

Allow the shoreline to change with management to control or limit that movement



9

## How was the SMP developed?

### Working in Partnership

Development and delivery of this SMP has been led by Angus Council, with support, guidance and review provided by a Client Steering Group, throughout the development of the plan.

#### The SMP2 has taken account of:

- Angus SMP 1
- other studies and projects to make sure that these plans are co-ordinated and coherent
- latest studies since the first generation SMP, including various reports on climate change and national / regional mapping (e.g. SEPA Flood Map)
- issues identified by recent coastal defence planning
- changes in legislation (e.g. the EU Habitats and Birds Directives, Water Framework Directive)
- changes in national Scottish flood and erosion risk planning requirements
- results of any coastal monitoring activities.

10

## What is included in the draft SMP document?

This SMP2 document represents numerous studies and assessments performed over a period of time.

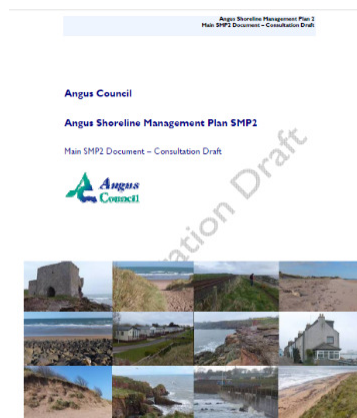
The SMP2 is presented in two parts:

- **Main SMP2 Document**

Overview of the plan, environmental summary, policy statements and action plans

- **Supporting Appendices**

A series of more detailed supporting documents, including stakeholder engagement process, coastal processes, environmental assessments (SEA, WFD, HRA), technical appraisal, economic assessment

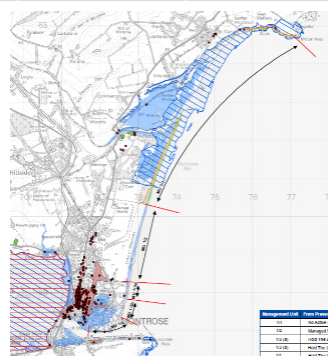


11

## What is the preferred plan?

### MU1 Montrose

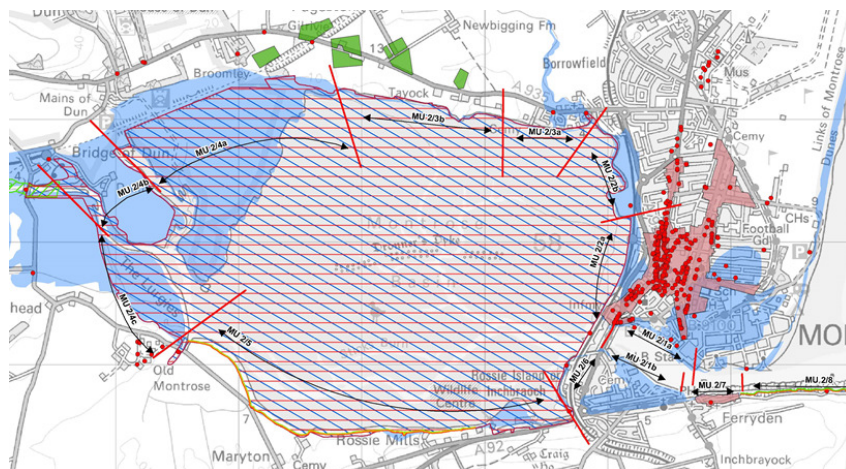
	Short term	Medium term	Long term
Montrose Bay	NAI	NAI	NAI
Montrose Golf Links	MR	MR	MR
The Faulds	HTL	HTL	MR
South Links Holiday Park	HTL	HTL	MR
GlaxoSmithKline	HTL	HTL	HTL



12

What is the preferred plan?

MU2 Montrose Basin



13

What is the preferred plan?

MU2 Montrose Basin

	Short term	Medium term	Long term
Montrose Port	HTL	HTL	HTL
Montrose West	HTL	HTL	HTL
Tayock	HTL	HTL	HTL
West Montrose Basin	HTL	HTL	HTL
West Montrose Basin (Bridge of Dun)	MR	MR	MR
Old Montrose to Railway Bridge	NAI	NAI	NAI
Rossie Island	HTL*	HTL*	HTL*
Ferryden	HTL*	HTL*	HTL*
Ferryden to Scurdie Ness	NAI	NAI	NAI

\* Maintenance of private defences by owners

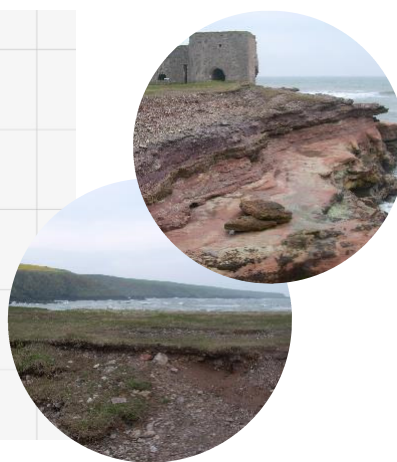
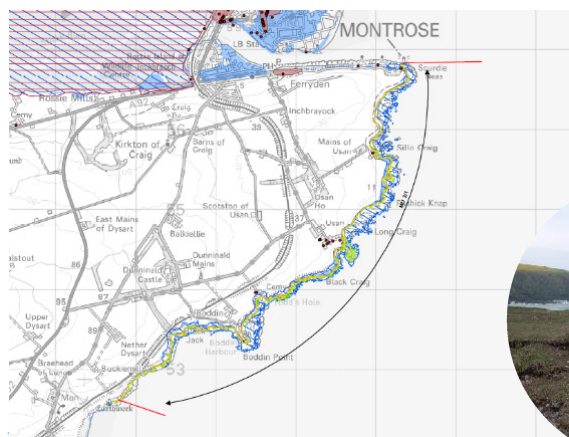


14

What is the preferred plan?

**MU3 Scurdie Ness to Rickle Craig**

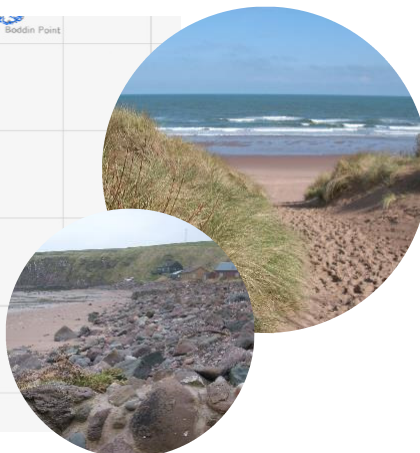
	Short term	Medium term	Long term
Scurdie Ness to Rickle Craig	NAI	NAI	NAI



What is the preferred plan?

**MU4 Lunan Bay**

	Short term	Medium term	Long term
Lunan Bay	NAI	NAI	NAI
Corbie Knowe	NAI	NAI	NAI





### What is the preferred plan?

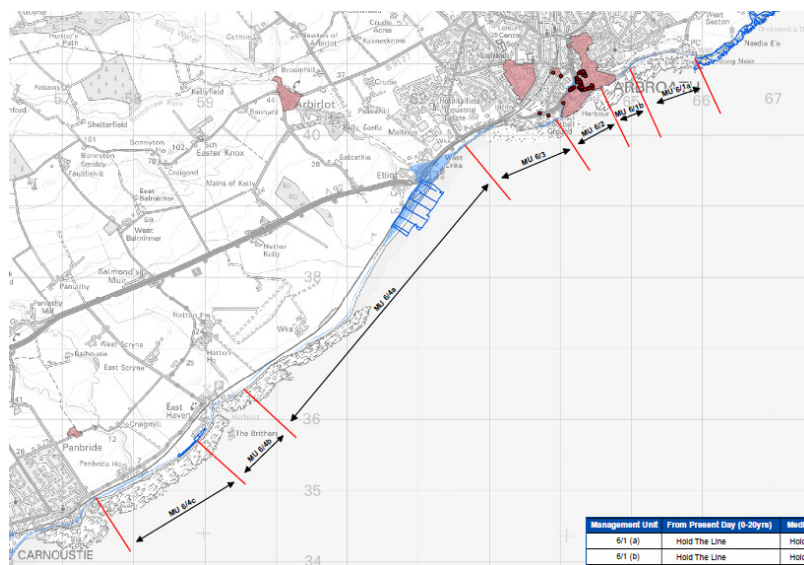
### MU5 Lang Craig to Whiting Ness

	Short term	Medium term	Long term
Lang Craig to Whiting Ness	NAI	NAI	NAI



### What is the preferred plan?

### MU6 Arbroath to West Haven



18

### What is the preferred plan? **MU6 Arbroath to West Haven**

	Short term	Medium term	Long term
Victoria Park	HTL	HTL	HTL
Seagate	HTL*	HTL*	HTL*
Arbroath Harbour and Inchcape Park	HTL	HTL	HTL
West Links to East Haven	HTL + NAI	HTL + NAI	HTL + NAI
East Haven	NAI	NAI	NAI
East Haven to West Haven	NAI	NAI	NAI

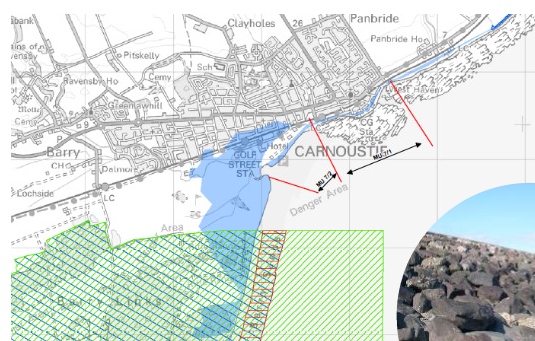
\* Maintenance of private defences by owners



19

### What is the preferred plan? **MU7 Carnoustie**

	Short term	Medium term	Long term
West Haven to Carnoustie Station	HTL	HTL	HTL
Carnoustie Station to Barry Burn	HTL	HTL	HTL

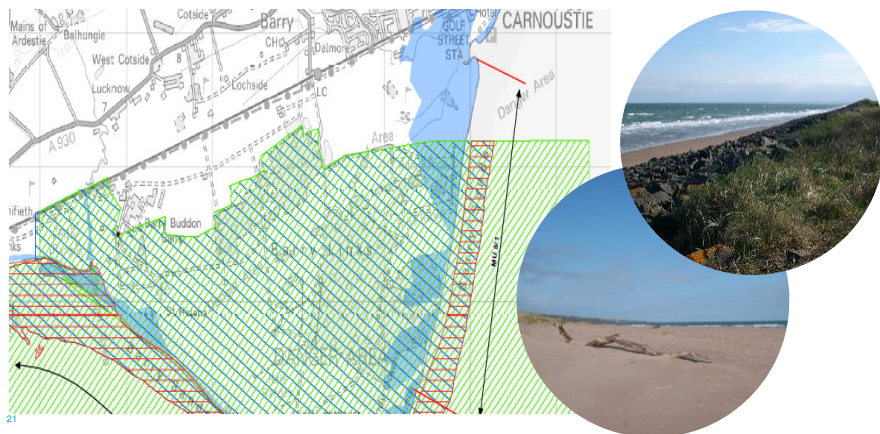


20

### What is the preferred plan?

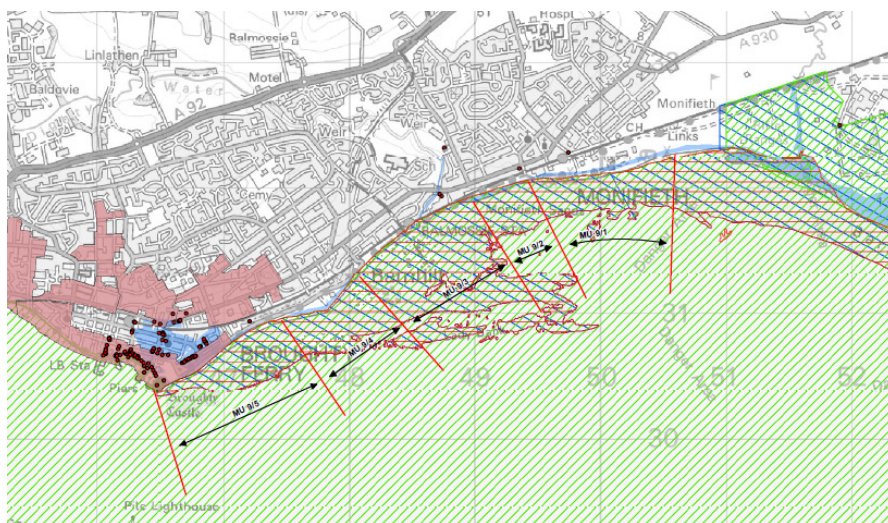
### MU8 Buddon Ness

	Short term	Medium term	Long term
Barry Sands East	HTL	HTL	HTL
Barry Buddon and Barry Sands West	NAI	NAI	NAI



### What is the preferred plan?

### MU9 Monifieth to Broughty Ferry



## What is the preferred plan?

### MU9 Monifieth to Broughty Ferry

	Short term	Medium term	Long term
MoD Boundary to west Tayview Caravan Park	HTL*	HTL*	HTL*
Monifieth West, Barnhill to the Esplanade	HTL	HTL	HTL
Broughty Ferry East	HTL*	HTL*	HTL*
Broughty Ferry	HTL	HTL	HTL

\* Through limited intervention



23

## How are we consulting with the public?

### Public events

- Montrose 30<sup>th</sup> May
- Carnoustie 31<sup>st</sup> May
- Arbroath 1<sup>st</sup> June

### View the SMP2

View online at: [www.angus.gov.uk/smp2](http://www.angus.gov.uk/smp2)

View hard copy at: Angus Council County Buildings, Forfar, DD8 3WR.

### Comment:

Comment online: [www.angus.gov.uk/hys](http://www.angus.gov.uk/hys)

Comment via email: [roads@angus.gov.uk](mailto:roads@angus.gov.uk)



24

## What's happens next?



Following consultation, comments received and issued raised will be considered and as appropriate, used to inform and update the final SMP2 document.



Adoption of the SMP2 by the Local Authorities.



The final SMP2 will be implemented by Angus Council. It will be the responsibility of Angus Council to ensure that the Action Plan is progressed by the appropriate partners and where there are problems with delivery to seek to resolve issues through collaborative working.

25

# Thank You

