




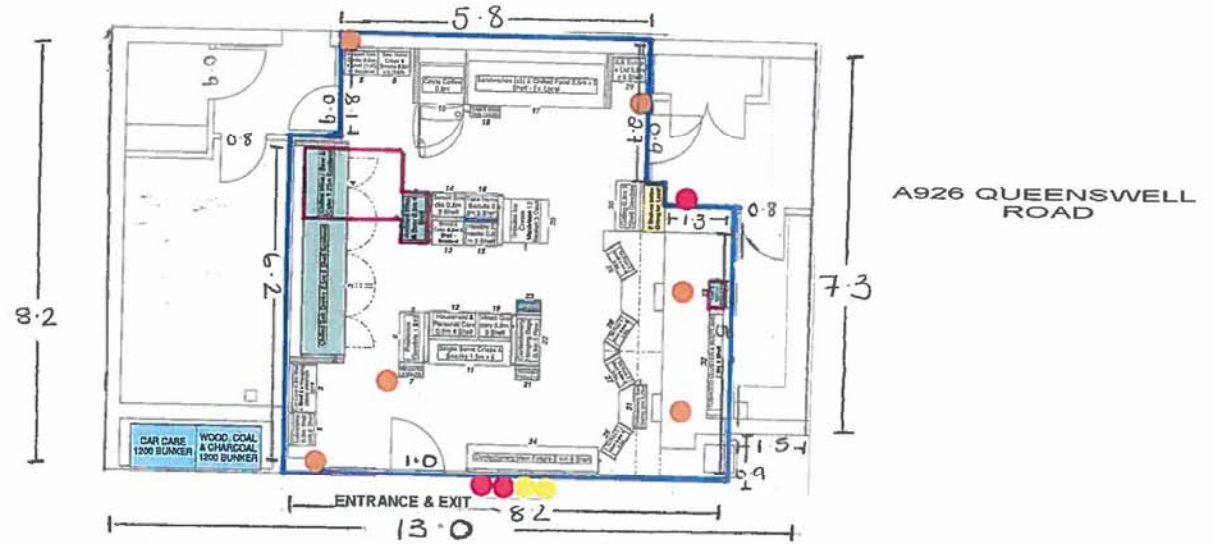


CHILDREN AND YOUNG PERSONS HAVE ACCESS TO ALL PUBLIC AREAS.

Key:	
	- Fire extinguisher.
	- Fire bucket.
	- CCTV.
	- Alcohol Display Area
	- Area to be Licensed.



Capacities:

Chilled Alcohol: 1.25 x 1.73 = 2.163m²
 Ambient Alcohol: 0.9 x 1.25 = 1.125m²
 Spirits: 0.45 x 0.9 = 0.405m²

Total Square Metre Capacity for the Display of Alcohol is: 3.693m²