

Dundee and Angus Forced Marriage Checklist

An aide memoire for workers

Warning Signs for Forced Marriages

EDUCATION

- Truancy
- Decline in performance or punctuality
- Low motivation at school
- Poor exam results
- Being withdrawn from school by those with parental responsibility
- Not allowed to attend extracurricular activities

HEALTH

- Self-harm
- Attempting suicide
- Eating disorders
- Depression
- Isolation
- Substance abuse

EMPLOYMENT

- Poor performance
- Poor attendance
- Limited career choices
- Not allowed to work
- Unable to attend business trips
- Unreasonable financial control e.g. confiscation of wages/income

VICTIM OF FORCED MARRIAGE

FAMILY HISTORY

- Siblings forced to marry
- Early marriage of siblings
- Family disputes
- Running away from home
- Unreasonable restrictions e.g. "house arrest"

POLICE INVOLVEMENT

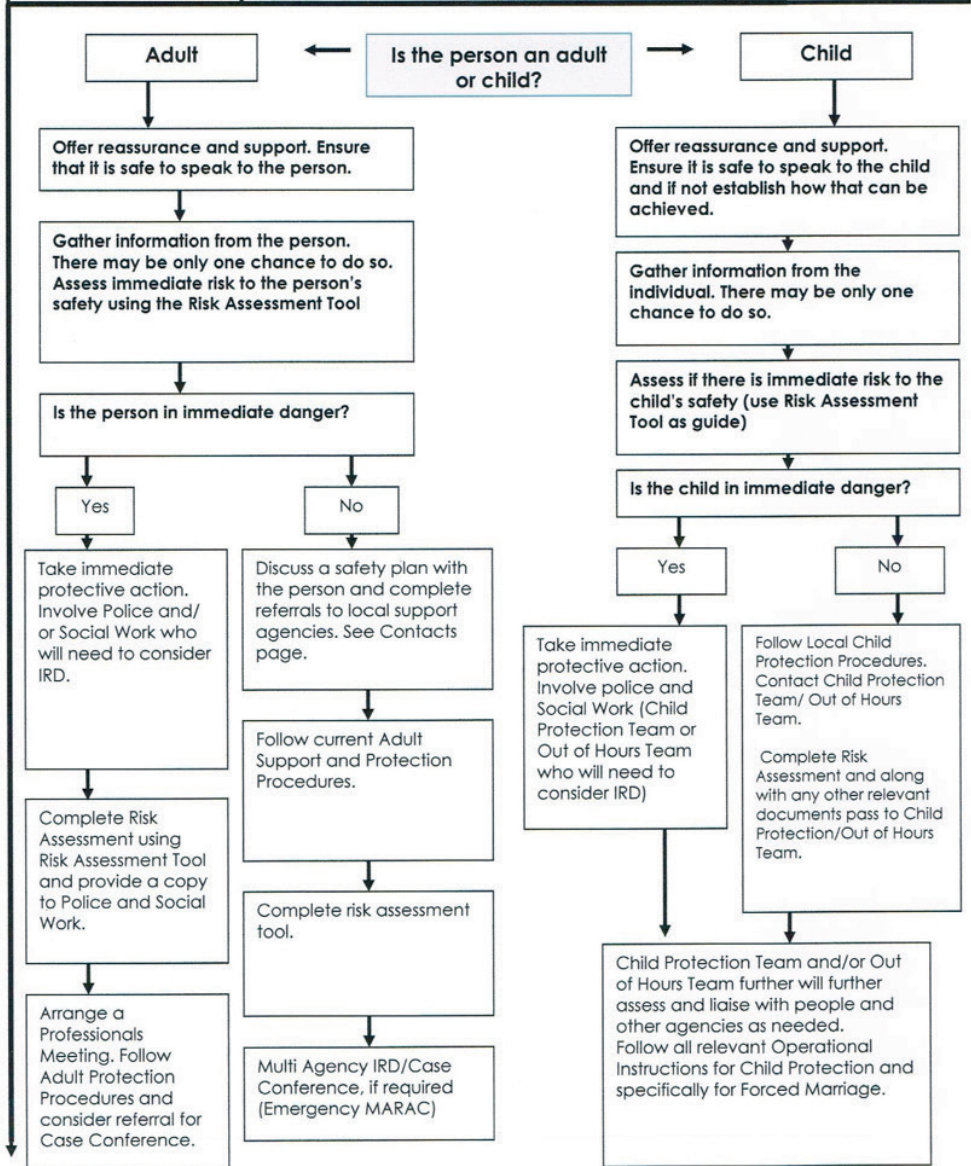
- Other young people within the family reported missing
- Reports of domestic abuse or breaches of the peace at the family home
- Female genital mutilation
- The victim reported for offences e.g. shoplifting or substance misuse

(There is more detailed information within the forced marriage protocol)

**YOU CAN CONTACT
THIRD SECTOR
SUPPORT AGENCIES
AT ANYTIME
THROUGHOUT ANY
OF THE PROCESS**

**Responding to
Forced Marriage**

**YOU CAN CONTACT
THE POLICE AT
ANYTIME
THROUGHOUT ANY
OF THE PROCESS**



ONE CHANCE CHECKLIST

You may only have one chance to speak to a potential victim of Forced Marriage and, therefore, only one chance to save a life.

- See the victim on his/her own – even if they are accompanied by others;
- See the victim immediately in a secure and private place where you will not be overheard;
- Reassure the victim about confidentiality and explain that you will not give information to family, friends or the community.
- Accept what is said;
- Explain all the options to the victim and possible outcomes;
- Recognise and respect his/her wishes;
- Assess the risk faced by conducting an appropriate and thorough risk assessment.
- Contact, as soon as possible, the lead worker responsible for honour based violence (if the potential victim is under 16, refer to child protection inter-agency guidance; if an adult at risk, discuss with your adult support and protection lead and refer to inter-agency guidance);
- Agree a way to make contact safely (for example agree a code word);
- Obtain full details to pass on to the lead worker and record these safely;
- Provide contact details or help the victim to memorise your contact details and/or those of a support agency such as Women's Aid.
- Consider the need for immediate police involvement, protection and placement away from the family and arrange this is necessary; this includes any action to stop the victim from being removed from the UK;
- Do everything possible you can to keep the victim safe; and
- Get immediate advice if you are not sure what to do.

Victims can be male or female, but are most likely to be the latter.

If FGM, Forced Marriage and/or Honour Based Violence is suspected **DO NOT MAKE ATTEMPTS TO CONTACT THE FAMILY, COMMUNITY MEMBERS – THIS INCREASES RISK AS THEY MAY BE COLLUDING WITH THE ABUSE.**

CONTACTS

Foreign & Commonwealth Office Forced Marriage Unit

The Forced Marriage Unit is a single point of confidential advice and assistance for those at risk of being forced into marriage overseas.

Telephone: 020 7008 0151

From overseas: +44 (0)20 7008 0151

Email: fmu@fco.gov.uk

Website: www.fco.gov.uk/forcedmarriage

Open 9am to 5pm Mon - Fri

Out of hours: 020 7008 1500 (ask for the Global Response Centre)

National Domestic Abuse Help Line

Tel 0800 0271234

Support is available 24/7

Shakti Women's Aid

Shakti offers support and information to all black minority ethnic women, children and young people who are experiencing or fleeing domestic abuse, forced marriage and other honour based violence issues. They also have refuge accommodation.

Tel: 0131 475 2399

Website: www.shaktiedinburgh.co.uk

Open 10am-5pm Mon - Fri

Hemat Gryffe Women's Aid (Glasgow based)

Hemat Gryffe provides support, advice and temporary accommodation to women and children from the BME community who experience domestic abuse or forced marriage.

Tel: 0141 353 0859

Email: hemat.gryffe@ntlbusiness.com

Open 9am - 5pm Mon - Fri

**To access the full Forced Marriage protocol visit:
www.avawp.org.uk or www.dvawp.co.uk**