

ANGUS COUNCIL

COMMUNITIES COMMITTEE - 28 FEBRUARY 2017

VARIATION OF WAITING RESTRICTIONS

REPORT BY THE HEAD OF TECHNICAL AND PROPERTY SERVICES

ABSTRACT

This report describes proposed amendments to current waiting restrictions to take account of changing circumstances at the various locations listed.

1 RECOMMENDATION

It is recommended that the Committee agrees to the promotion of Traffic Regulation Variation Orders to effect changes to current waiting restrictions in Angus as set out in this report.

2 ALIGNMENT TO THE ANGUS COMMUNITY PLAN/SINGLE OUTCOME AGREEMENT/CORPORATE PLAN

This report contributes to the following local outcome contained within the Angus Community Plan and Single Outcome Agreement 2011-2014:

- Our communities are safe, secure and vibrant

3 INTRODUCTION

Locations where new and alteration to existing waiting restrictions are considered to be appropriate are listed below giving brief reasons and the proposed alterations.

4 PROPOSALS

4.1 EAST KIRKTON ROAD/LAUDER ROAD ARBROATH

- 4.1.1 A service request has been received via local elected members arising from a local meeting held in relation to inappropriate kerbside parking causing significant congestion and restricting free traffic flow in the vicinity of Inverbrothock Primary School.
- 4.1.2 The kerbside parking in the vicinity of Inverbrothock School is generated largely by parents arriving to drop off and pick up school pupils at various times of the day but is mainly a concern in the afternoon at the close of school. This has been a long standing issue with residents and causes difficulties for access to properties and general congestion. At the recent meeting the matter of parking around the East Kirkton Road/Lauder Road junction was raised in respect of it causing problems in terms of visibility sightlines and restricting free traffic flow.
- 4.1.3 The matter was subsequently discussed at the Traffic Co-ordinating group and it was recommended that 'no waiting at any time' restrictions as junction protection in East Kirkton Road and Lauder Road should be introduced in the interest of traffic safety and free traffic flow.
- 4.1.4 Consultation has been held with the local elected members and no objections were raised at this time. A plan indicating the current proposal is shown in **Appendix 1** to this report.

4.2 MILLGATE LOAN ARBROATH

- 4.2.1 A request has been received from a local resident in relation to inappropriate kerbside parking causing significant congestion and restricting free traffic flow on Millgate Loan in the vicinity of Ladyloan Primary School.
- 4.2.2 Significant kerbside parking in this vicinity is generated by parents arriving to drop off and pick up school pupils at various times of the day. It has been reported that kerbside parking on both sides of Millgate Loan just west of the school arising at these times causes general congestion but particularly for large vehicles including buses having had to reverse on occasions.
- 4.2.3 It is proposed therefore that the existing 'no waiting at any time' restrictions on the north side of the street to the east of its junction with Common Brae be extended by approx. 35 metres in order to alleviate the situation and in the interest of traffic safety and free traffic flow.
- 4.2.4 Local elected members are generally in agreement with the proposal. A plan indicating the current proposal is shown in **Appendix 1** to this report.

4.3 POPLAR DRIVE BALLUMBIE

- 4.3.1 A request has been received via a local elected member in relation to inappropriate kerbside parking on Poplar Drive Ballumbie.
- 4.3.2 The kerbside parking in this vicinity is generated by parents arriving to drop off /pick up school pupils at the bus stop on Poplar Drive. Vehicles parked at this location are causing school pupils walking to and from the bus stop to have to cross the road between parked vehicle which is clearly a potentially dangerous situation.
- 4.3.3 The matter was discussed at the Traffic Co-ordinating group and it was recommended that 'no waiting at any time' restrictions should be introduced on both sides of Poplar Drive just west of the bus stops and centred on the dropped kerb pedestrian crossing points, in the interest of pedestrian safety.
- 4.3.4 Consultation has been held with the local elected members and no objections were raised at this time. A plan indicating the current proposal is shown in **Appendix 2** to this report.

4.4 TRINITY ROAD BRECHIN

- 4.4.1 A request has been received from a local resident in relation to inappropriate kerbside parking near the access leading to Glebe Park which, at times, is causing difficulties for drivers emerging from this access onto Trinity Road.
- 4.4.2 Significant kerbside parking in this vicinity is generated by football related traffic on match days. It has been reported that kerbside parking close to both sides of the access restricts visibility and access into and out of the junction to the detriment of road safety.
- 4.4.3 It is proposed that 'no waiting at any time' restrictions be introduced on Trinity Road on each side of the access for a distance of 10 metres in order to alleviate the situation.
- 4.4.4 Consultation has been held with the local elected members raised and no comments were received. A plan indicating the current proposal is shown in **Appendix 2** to this report.

4.5 BRECHIN ROAD/MUIR STREET FORFAR

- 4.5.1 Local residents have raised concerns relating to on street parking restricting visibility for drivers entering and leaving the junction of Brechin Road with Muir Street.
- 4.5.2 Roads officers visited the site and the issues raised by the residents appear justified and as such it is proposed that 'no waiting at any time' restrictions as junction protection on Brechin Road and Muir Street should be introduced in the interest of traffic safety and free traffic flow.

- 4.5.3 Consultation has been held with the local elected members and no objections were raised at this time. A plan indicating current proposal is shown in **Appendix 3** to this report.

4.6 MONTROSE ROAD/WILLIAM STREET FORFAR

- 4.6.1 A request has been received via a local elected member for the provision of waiting restrictions at the Montrose Road/William Street junction in order to control kerbside parking in this vicinity which is restricting access and visibility for drivers as well as restricting the pedestrian dropped kerbs on William Street.
- 4.6.2 It is proposed that 'no waiting at any time' restrictions on Montrose Road and William Street as junction protection should be introduced in the interest of traffic safety and free traffic flow.
- 4.6.3 Consultation has been held with the local elected members and an objection was raised by one member, whilst it is accepted that it can occasionally be difficult to negotiate this junction the member is not in favour of the proposal as it would displace vehicles onto Montrose Road. The member considers that parking spaces are at a premium in this area and is concerned at the loss of spaces arising from this proposal. The other local members raised no objections to this proposal at this time.
- 4.6.4 A plan indicating current proposal is shown in **Appendix 3** to this report.

4.7 MONTROSE ROAD/YEAMAN STREET FORFAR

- 4.7.1 A request has been received via an elected member for the provision of waiting restrictions at the Montrose Road/Yeaman Street junction in order to control kerbside parking in this vicinity which is restricting access and visibility for drivers particularly during services at the nearby Church. The parking also restricts the pedestrian dropped kerbs on Yeaman Street.
- 4.7.2 It is proposed that 'no waiting at any time' restrictions on Montrose Road and Yeaman Street as junction protection should be introduced in the interest of traffic safety and free traffic flow.
- 4.7.3 Consultation has been held with the local elected members and an objection was raised by one member, whilst it is accepted that it can occasionally be difficult to negotiate this junction the member is not in favour of the proposal as it would displace vehicles onto Montrose Road. The member considers that parking spaces are at a premium in this area and is concerned at the loss of spaces arising from this proposal. The other local members raised no objections to this proposal at this time.
- 4.7.4 A plan indicating current proposal is shown in **Appendix 3** to this report.

4.8 BRECHIN ROAD KIRRIEMUIR

- 4.8.1 Concerns have been raised by a local elected member in relation to occasional congestion arising from kerbside parking associated with Kirriemuir Bowling Club on the narrow section of Brechin Road where the carriageway varies between 4.45 and 5.05 metres.
- 4.8.2 The majority of properties in this area have off street parking and as such further restrictions will not adversely impact on the residents whilst the Bowling Club parking can be accommodated in nearby side streets such as Bowling Green Road.
- 4.8.3 It is proposed therefore to provide additional 'no waiting at any time' restrictions on both sides of Brechin Road generally between Tillyloss and Bowling Green Road in the interest of traffic safety and in order to maintain free traffic flow.
- 4.8.4 Consultation had previously been held with the local elected members and they raised no objections. A plan indicating current proposal is shown in **Appendix 4** to this report.

4.9 GRANGE ROAD/GRANGE PLACE MONIFIETH

- 4.9.1 A local resident has raised concerns relating to on street parking in the vicinity of the junction of Grange Road with Grange Place.

- 4.9.2 Roads officers visited the site and it was noted that parking close to the junction on Grange Road was impairing sightlines for drivers emerging from Grange Place.
- 4.9.3 It is proposed therefore that 'no waiting at any time' restrictions should be introduced as junction protection on Grange Road and Grange Place in the interest of traffic safety and free traffic flow.
- 4.9.3 Consultation has been held with the local elected members and no objections were raised at this time. A plan indicating current proposal is shown in **Appendix 5** to this report.

4.10 REFORM STREET MONIFIETH

- 4.10.1 A request has been received from a local resident regarding kerbside parking in Reform Street just south of its junction with Brook Street causing restricted sightlines for drivers.
- 4.10.2 Whilst there is currently a short length of 'no waiting at any time' at this location it is not considered sufficient to maintain adequate sightlines for drivers emerging from Brook Street into Reform Street.
- 4.10.3 It is proposed that the existing 'no waiting at any time' restrictions on Reform Street on the south side of its junction with Brook Street be extended to provide an overall length of 10 metres in the interest of traffic safety and free traffic flow.
- 4.10.4 Consultation has been held with the local elected members and no objections were raised at this time. A plan indicating current proposal is shown in **Appendix 5** to this report.

4.11 VICTORIA STREET MONIFIETH

- 4.11.1 Police Scotland has raised concerns relating to on street parking on Victoria Street just south of its junction with Adderley Terrace. Victoria Street is narrowed slightly at the junction by virtue of build outs which were provided previously to improve visibility at this junction however this has created a 'pinch point' at this location which also has restricted forward visibility.
- 4.11.2 It has been reported that vehicles having stopped to permit opposing vehicles to proceed have been forced to reverse to permit other vehicles through. Roads officers visited the site with Police Scotland and it was agreed that additional waiting restrictions would be of benefit.
- 4.11.3 It is proposed therefore that the existing 'no waiting at any time' restrictions on both sides of Victoria Street be extended southwards in the interest of traffic safety and free traffic flow.
- 4.11.4 Consultation has been held with the local elected members and no objections were raised at this time. A plan indicating current proposal is shown in **Appendix 6** to this report.

4.12 BARRACK ROAD/FERRY ROAD/GARRISON ROAD/PROVOST REIDS ROAD MONTROSE

- 4.12.1 As part of the South Montrose Regeneration Project the roads leading to GlaxoSmithKlein and other premises in Barrack Road area are being upgraded including road widening, bend improvements, etc.
- 4.12.2 Some additional waiting restrictions along the route have been requested in order to maintain free traffic flow for large vehicles travelling to and from GSK and other commercial premises in this vicinity.
- 4.12.3 It is considered that some additional waiting restrictions are appropriate and would improve general access to and from this area particularly for large vehicles. The proposed additional waiting restrictions are mainly in Ferry Road and at its junctions with Barrack Road, Garrison Road and Provost Reid's Road.
- 4.12.4 The proposals are considered to represent a reasonable balance in terms of maintaining free traffic flow but also retaining an element of kerbside parking for workers/visitors, etc. to this

area. It is considered that any displacement of vehicles can be accommodated in car parks associated with the various commercial properties and elsewhere in the general area.

- 4.12.5 Consultation has been held with the local elected members and no objections were raised at this time. A plan indicating current proposal is shown in **Appendix 7** to this report.

4.13 GINDERA ROAD MONTROSE

- 4.13.1 A request has been received from residents at Rosehill Cottages in respect of kerbside parking on Gindera Road causing difficulties for vehicles gaining access to their premises.
- 4.13.2 Regular access is required by residents but also by large vehicles for waste collection and to service the septic tanks at these cottages which have at times been prevented by inappropriate parking of vehicles on Gindera Road opposite the access to the cottages.
- 4.13.3 It is proposed that the existing 'no waiting at any time' restrictions on the south side of Gindera Road north of its junction with Wishart Avenue be extended by approx.12 metres in order to improve access to the Cottages for all users.
- 4.13.4 Consultation has been held with the local elected members and no objections were raised at this time. A plan indicating current proposal is shown in **Appendix 8** to this report.

4.14 GLENESK AVENUE MONTROSE

- 4.14.1 A service request has been received via a local elected member in relation to inappropriate kerbside parking causing general congestion along Glenesk Avenue and in particular restricting visibility sightlines for vehicles emerging onto Glenesk Avenue from Glenprosen Street.
- 4.14.2 In order to improve the situation it is considered that the introduction of additional 'no waiting at any time' restrictions at the Glenesk Avenue/Glenprosen Street junction and on the east side of Glenesk Avenue just north of the bus layby is appropriate.
- 4.14.3 Consultation has been held with the local elected members and no objections were raised at this time. A plan indicating the current proposal is shown in **Appendix 8** to this report.

4.15 WESTERN ROAD MONTROSE

- 4.15.1 A request has been received from a resident at Milnamair on the east side of Western Road in respect of kerbside parking affecting access to and from their premises.
- 4.15.2 Western Road at this location is relatively narrow with limited footway width on the east side and as a result vehicles parking opposite the access to the property can significantly restrict vehicles turning into and from the property.
- 4.15.3 At present vehicles may legally park opposite the property access and in order to resolve the matter it is proposed to introduce an additional 5 metres of 'no waiting at any time' restrictions. This would result in the displacement of no more than one vehicle which can be accommodated elsewhere nearby.
- 4.15.4 Consultation has been held with the local elected members and no objections were raised at this time. A plan indicating the current proposal is shown in **Appendix 9** to this report.

4.16 PANMURE ROAD/ELMGROVE PARK MONIKIE

- 4.16.1 Local elected members have raised concerns relating to on street parking on Panmure Road particularly when events are being held at the Country Park and their car park is unable to cope with the number of visitors vehicles.
- 4.16.2 Whilst it is accepted that this is an infrequent problem it can cause significant inconvenience for road users in Panmure Road as well as affecting residents in the street and in adjacent Elmgrove Park when vehicles are sometimes parked inappropriately.

- 4.16.3 It is also recognised that due to the limited enforcement that any waiting restrictions may receive in this rural location the proposed restrictions may not fully resolve the situation but may deter sufficient drivers from parking inappropriately to at least ease the problem.
- 4.16.4 It is proposed that 'no waiting at any time' restrictions as junction protection on Panmure Road, Elmgrove Park and Monikie Country Park access be introduced in the interest of traffic safety and free traffic flow. It is not anticipated that the proposals will impact on local residents as they mainly have off street parking.
- 4.16.5 Consultation has been held with the local elected members and no objections were raised at this time. A plan indicating the current proposal is shown in **Appendix 9** to this report.

5 FINANCIAL IMPLICATIONS

- 5.1 The estimated cost of implementing the proposals is £3000 which will be met from the 2017/2018 Traffic Revenue Budget. Additional maintenance costs will amount to £600 per annum and this will require to be met from future years' Revenue Budgets.

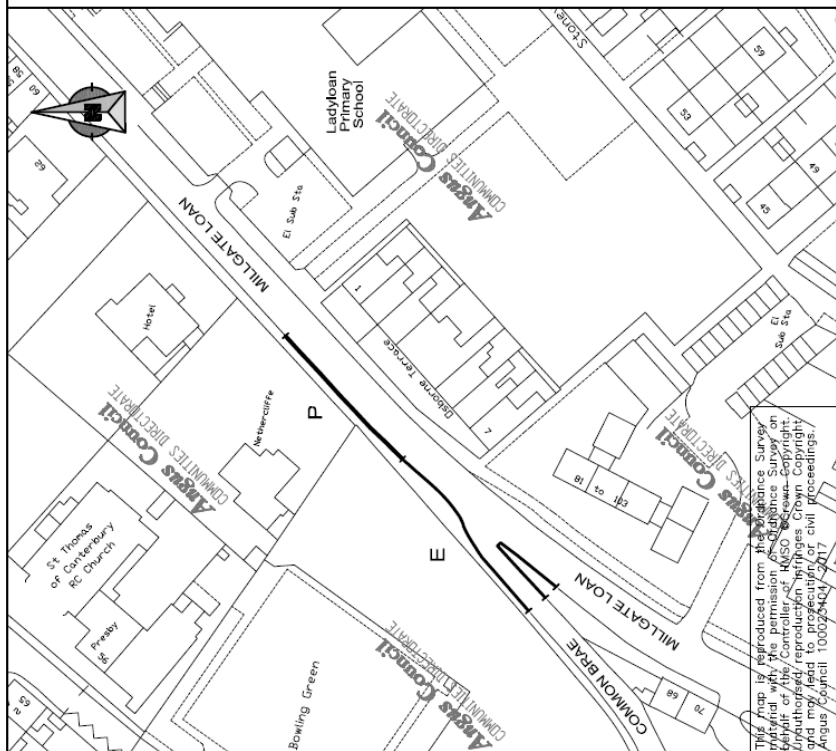
6 CONSULTATION

- 6.1 The Chief Executive, Strategic Director - Resources, the Head of Corporate Improvements & Finance, Head of Legal and Democratic Services and the Local Police Commander of Tayside Division were consulted in the preparation of this report.

NOTE: No background papers, as detailed by Section 50D of the Local Government (Scotland) Act 1973 (other than any containing confidential or exempt information) were relied on to a material extent in preparing the above report.

Author: Ian Cochrane, Head of Technical and Property Services
E-mail:CommunitiesBusinessSupport@angus.gov.uk

APPENDIX 1



ARBROATH

ARBROATH

Rev.	Date	Description	Drawn	Checked	Approved

SCALE 1:1250

LEGEND

No Waiting at Any Time

E - Existing

P - Proposed

Drawing Size:

Drawn by: *clm*

Date: 30.12.16

Issue:

Status:

Checked By: _____ Date: _____

Approved By: _____ Date: _____

Drawing Title:

VARIATION OF WAITING RESTRICTIONS

Angus Council
COMMUNITIES DIRECTORATE
Technical & Property Services

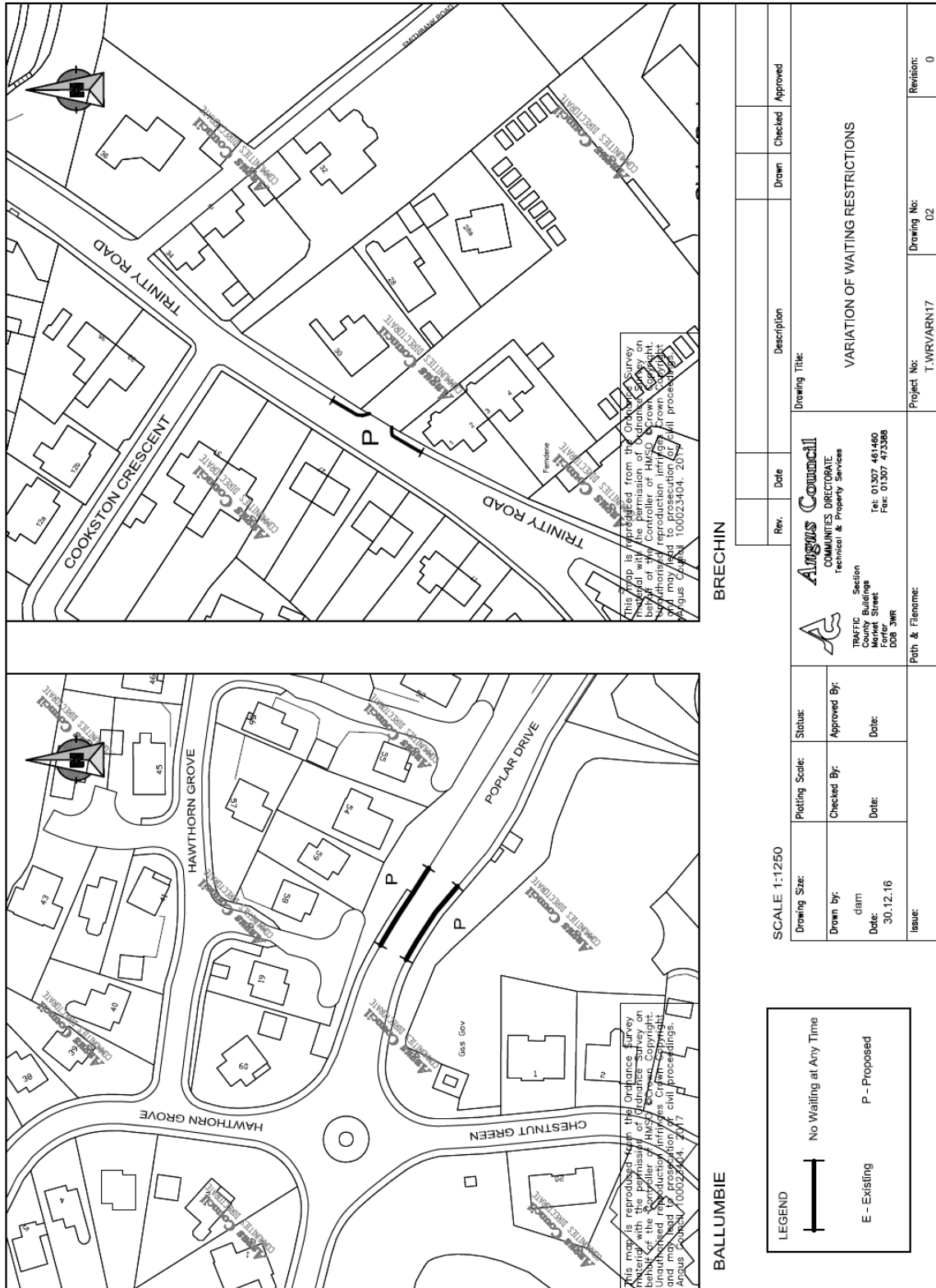
Section
Traffic Management
Market Street
Forfar
DD8 3WR

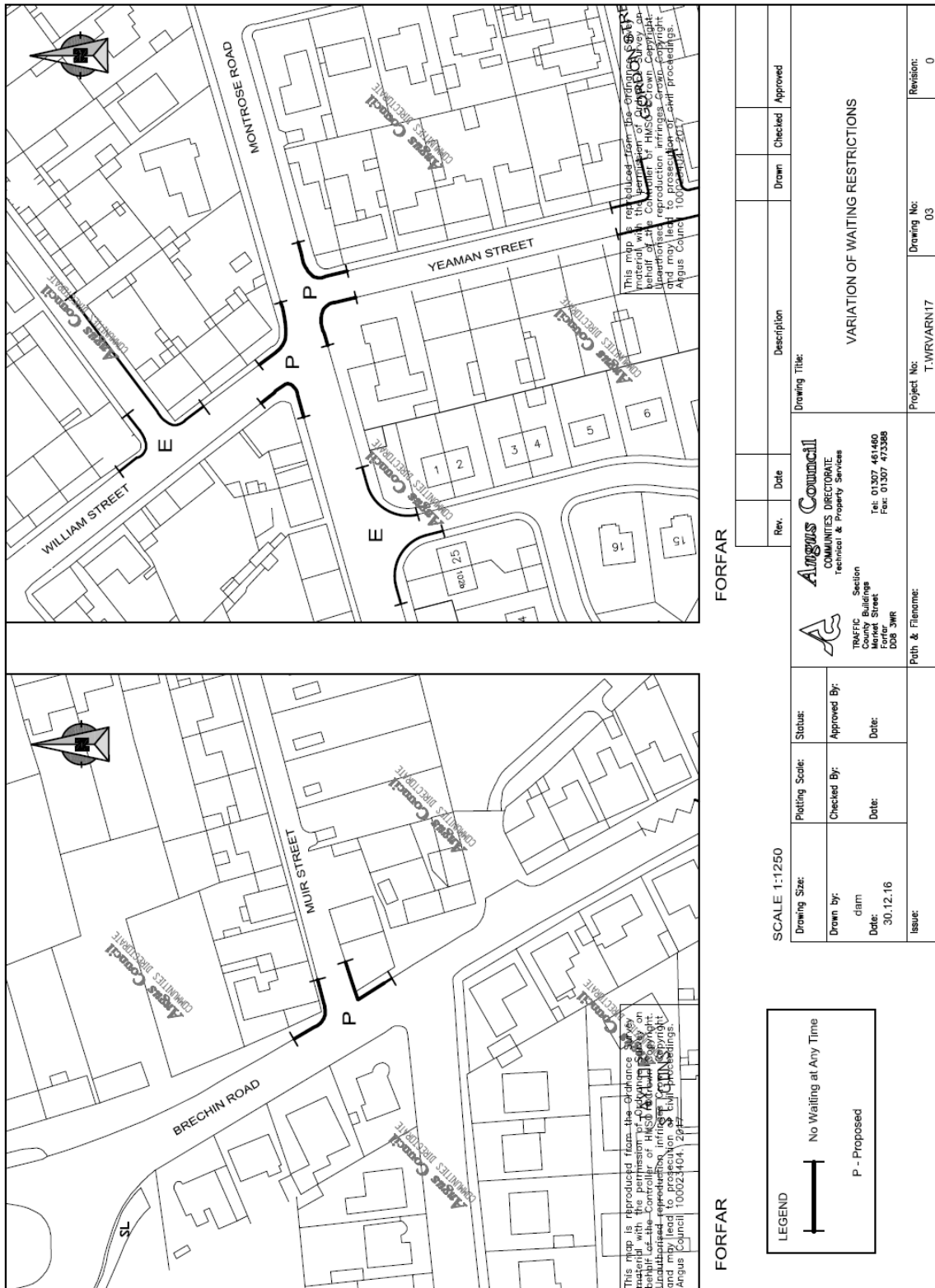
Tel: 01307 461460
Fax: 01307 473388

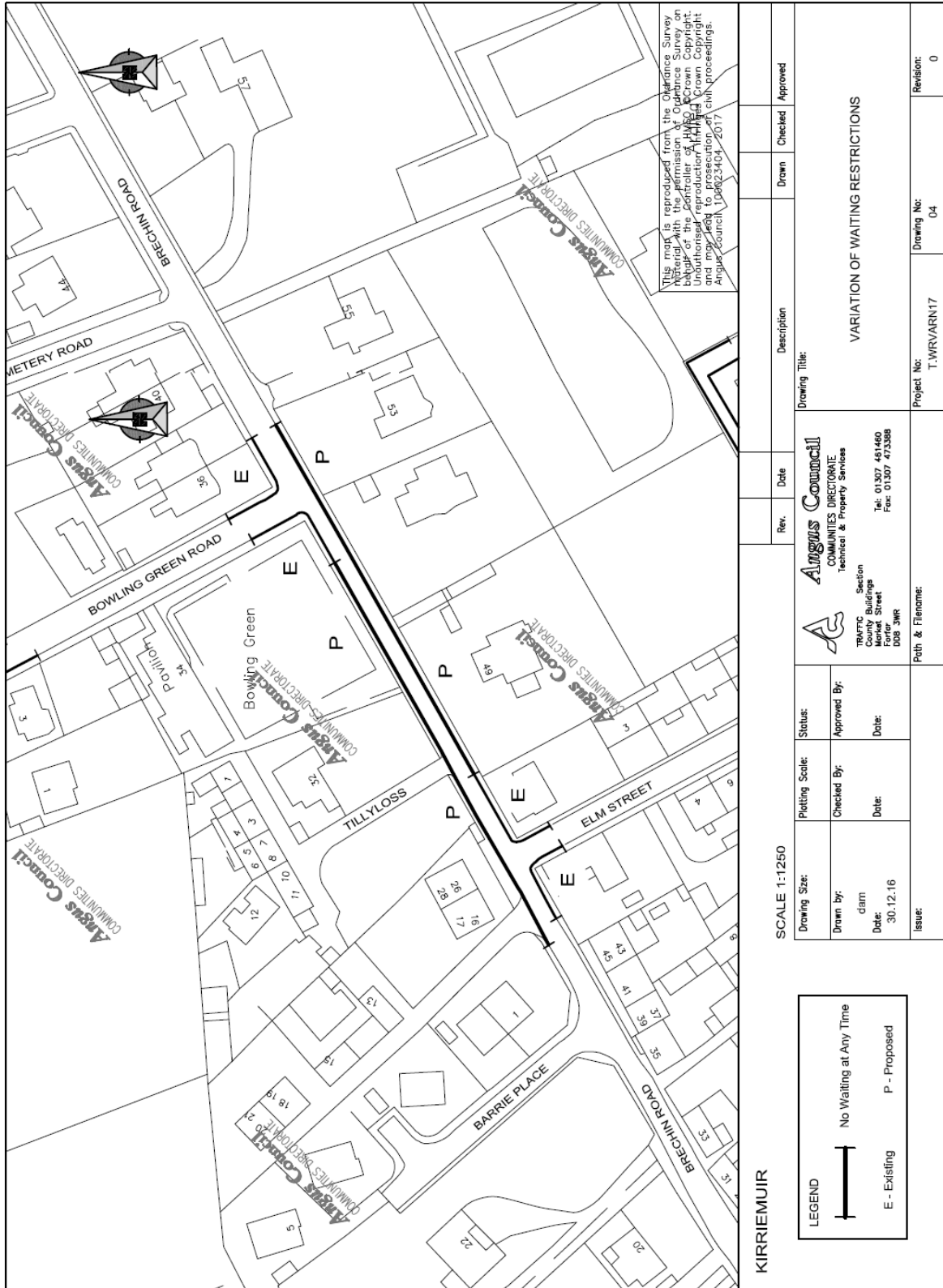
Project No: T.WRVARN17

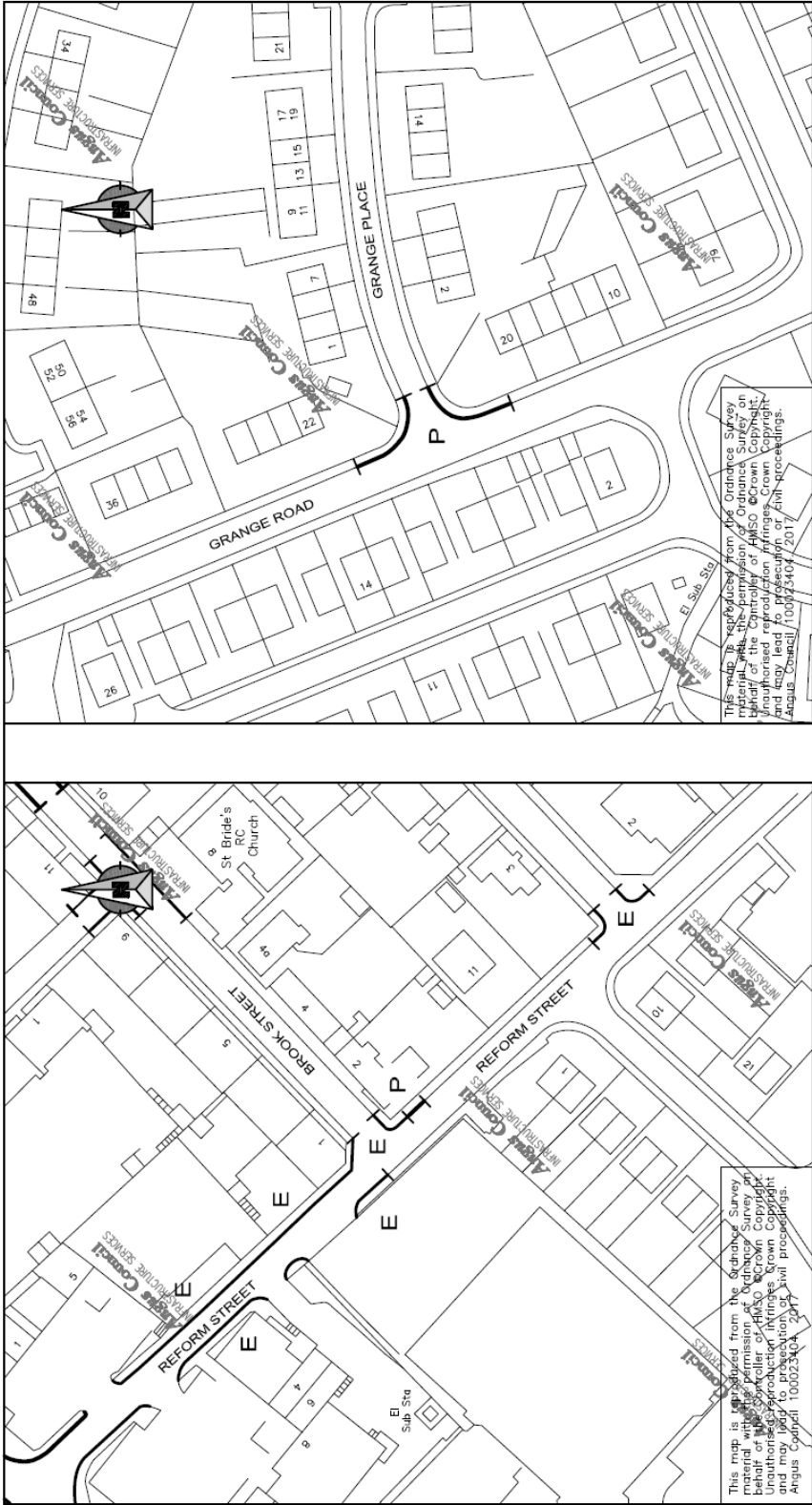
Drawing No: 01

Revision: 0









MONIFIETH

MONIFIETH

SCALE 1:1250


LEGEND

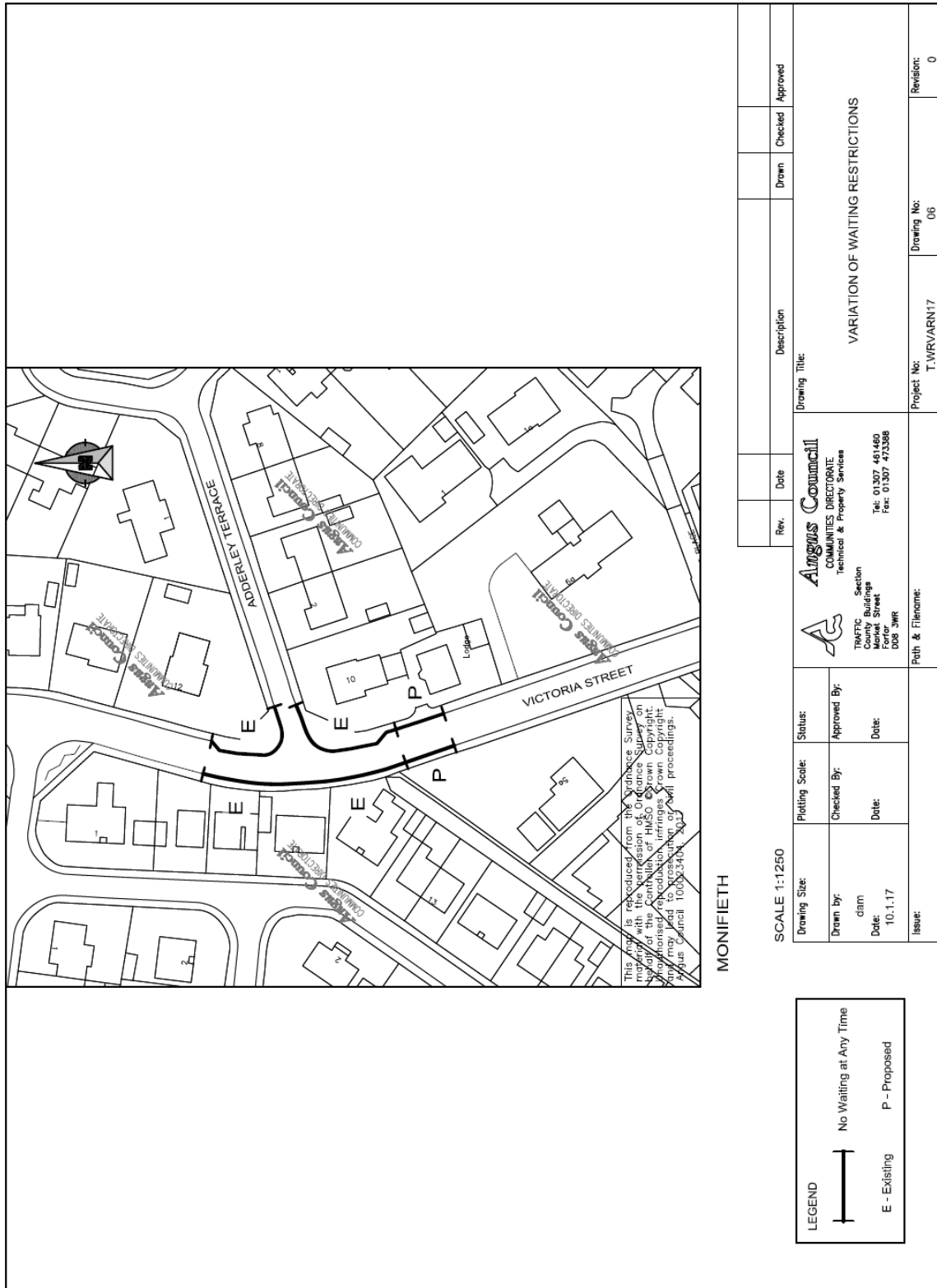
E - Existing

P - Proposed

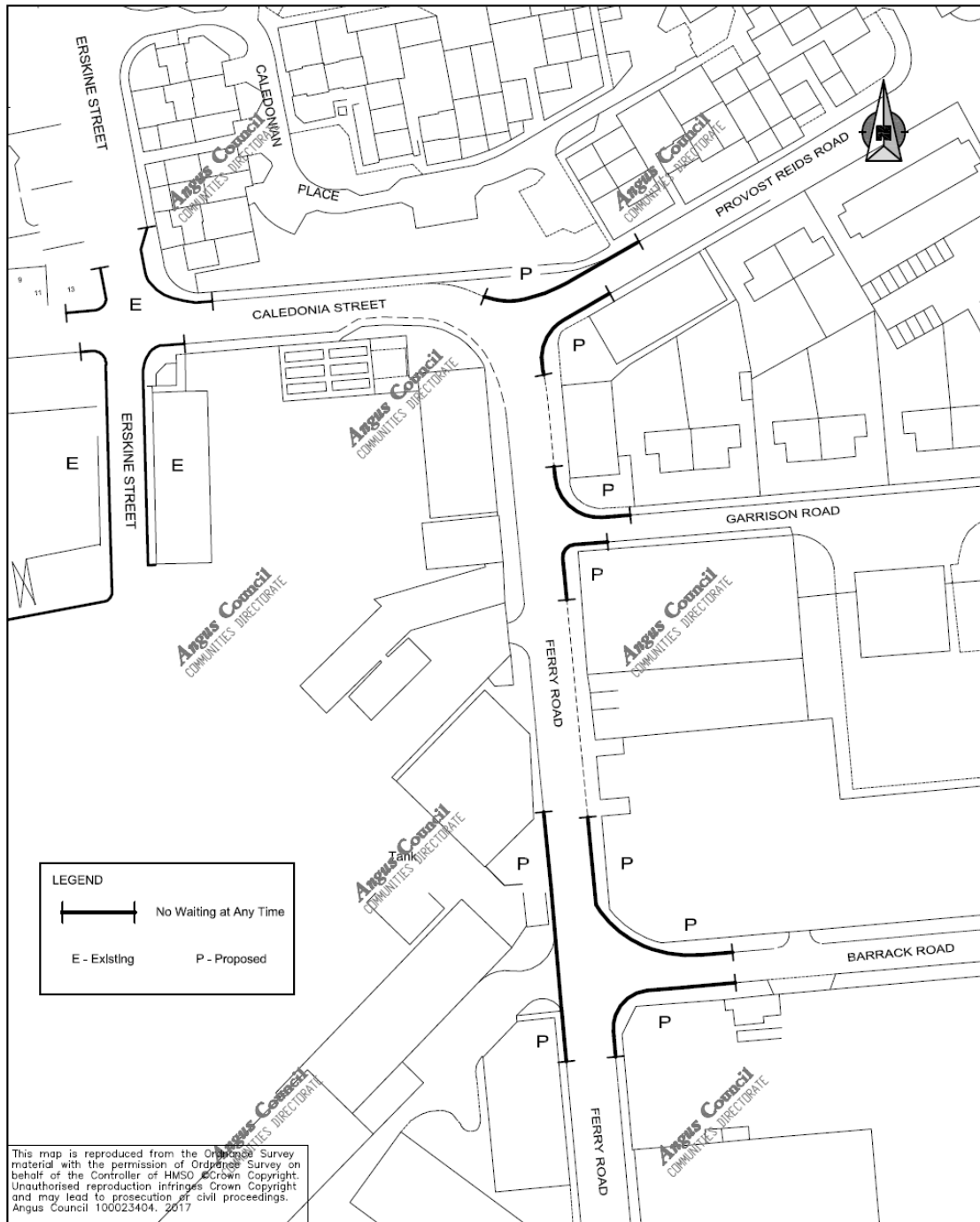
No Waiting at Any Time

Drawing Size:	Plotting Scale:	Status:
Drawn by: dram	Checked By:	Approved By:
Date: 30.12.16	Date:	Date:

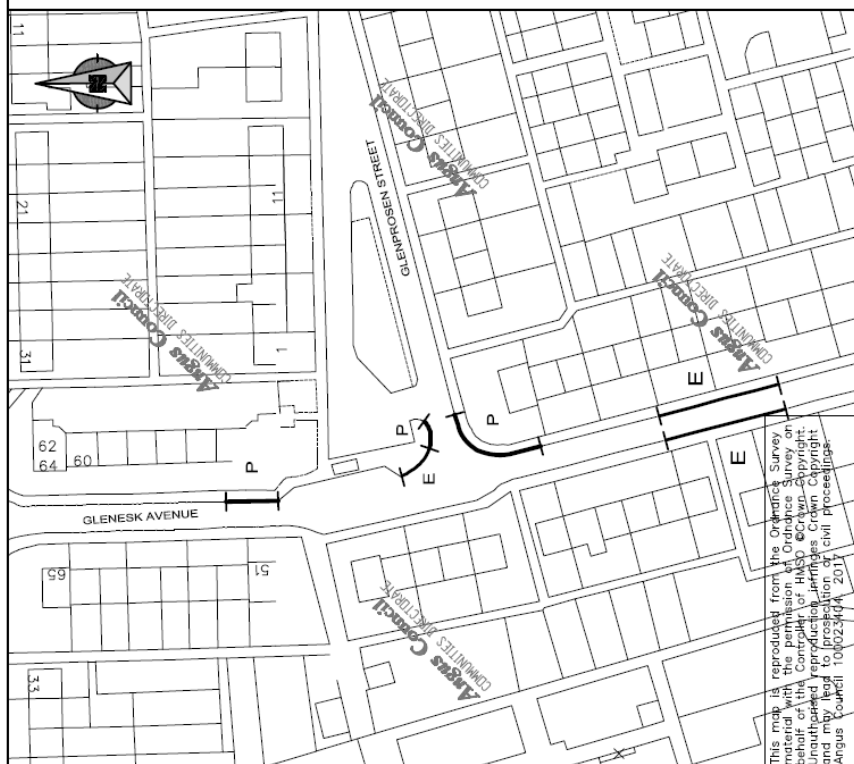
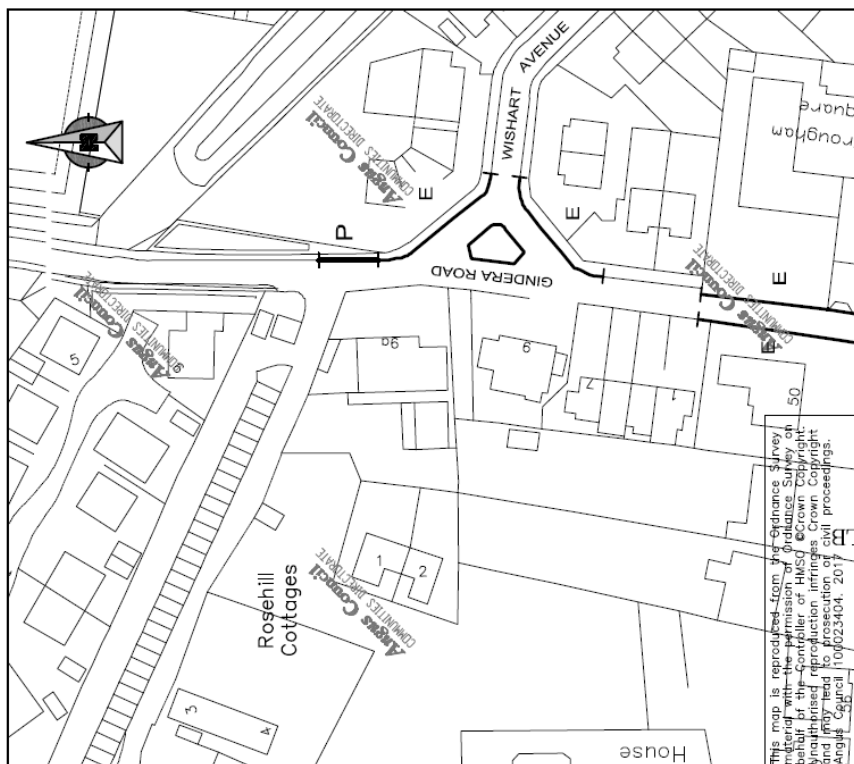
 Angus Council COMMUNITIES DIRECTORATE Technical & Property Services Section TRAFFIC County Buildings Forfar Street Forfar DD8 3WR Tel: 01307 461460 Fax: 01307 473368		Drawing Title: VARIATION OF WAITING RESTRICTIONS	
Path & Filename:		Project No: T.WRVARN17	Drawing No: 05
Issue:		Revision: 0	



APPENDIX 7




MONTROSE			SCALE 1:1250			Rev.	Date	Description	Drawn	Checked	Approved
Drawing Size:	Plotting Scale:	Status:	 Angus Council COMMUNITIES DIRECTORATE Technical & Property Services Section County Buildings Market Street Forfar DD8 3WR Tel: 01307 461460 Fax: 01307 473388			Drawing Title:					
Drawn by: dam Date: 30.12.16	Checked By:	Approved By:				VARIATION OF WAITING RESTRICTIONS					
Issue:			Path & Filename:			Project No: T.WRVARN17		Drawing No: 07		Revision: 0	



MONTROSE

MONTROSE

<p>LEGEND</p> <div style="display: flex; justify-content: space-around; align-items: center;"> <div style="text-align: center;">  No Waiting at Any Time </div> <div style="text-align: center;"> P - Proposed </div> </div> <div style="display: flex; justify-content: space-around; align-items: center; margin-top: 10px;"> <div style="text-align: center;"> E - Existing </div> <div style="text-align: center;"> 30.12.16 </div> </div>	
---	--

