

Active Angus 2020 – Evidence Paper 3 – Assessment of need of Indoor and Outdoor Sports Facilities



**Evidence Paper 3 – Assessment of need of Indoor and Outdoor Sports Facilities**

**CONTENTS**

<b>1. INTRODUCTION AND BACKGROUND</b>	<b>3</b>
<b>2. INDOOR FACILITIES</b>	<b>4</b>
<b>3. OUTDOOR FACILITIES</b>	<b>8</b>
<b>4. NON PITCH SPORTS</b>	<b>24</b>

## Appendices

- 1 Demand Audit Table
- 2 Supply Audit Table
- 3 PPM Model Analysis
- 4 Quality Audits (Summary)
- 4a Quality Proforma
- 4b Sports Club Questionnaires – Football, Rugby, Cricket, Hockey
- 4c Sports Club Questionnaires – Bowls, Tennis and Athletics.
- 5 MAPS
  - 5A - Map Picture Access to Pitch Labels All
  - 5B - Map Picture Access to Pitches Arbroath
  - 5C - Map Picture Access to Pitches Brechin
  - 5D - Map Picture Access to Pitches Forfar and Kirremuir
  - 5E - Map Picture Access to Monifeith
  - 5F - Map Picture Access to Montrose
  - 5G - Map Picture 7 – a- side Football Pitches
  - 5H - Map Picture 11 – a – side Football Pitches
  - 5I - Map Picture Artificial Turf Pitches
  - 5J - Map Picture Artificial Turf Pitches – Costs
  - 5K - Map Picture Bowls
  - 5L - Map Picture Tennis Courts
  - 5M - Map Picture Athletics Tracks
- 6 **National FPM Analysis: Halls and Pools (Angus extract and summary)**

## 1. Introduction and Background

- 1.1 The Playing Pitch Strategy will provide high level policy guidance in relation to future provision and delivery of playing pitch provision, as well as more detailed analysis of what is needed, where and why. The high level policy guidance relates specifically to the nature of pitches that should be considered as a priority for investment, the level of pitch provision needed to meet current and future demand, and options for addressing future demand.

### Population

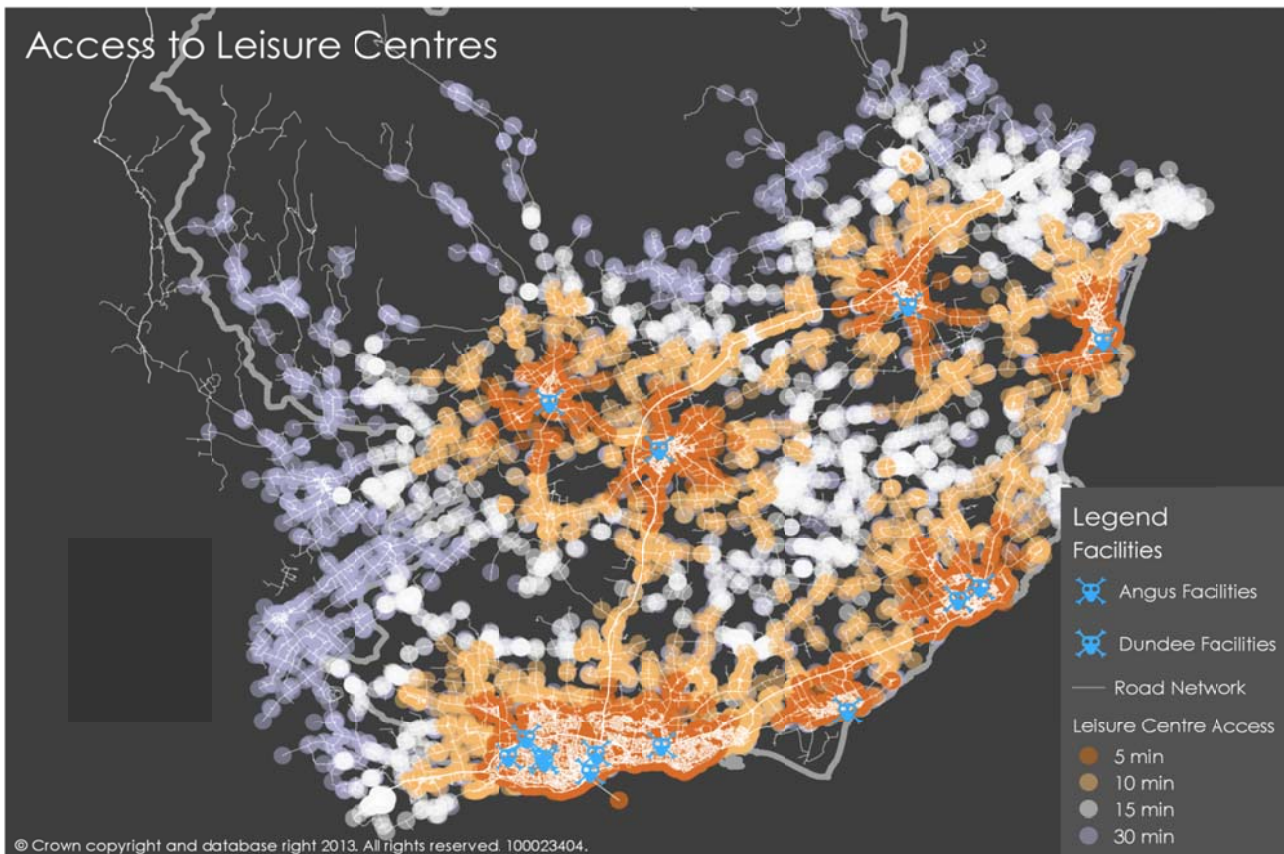
- 1.2 Angus' population has risen overall since 1985, as has that of Scotland. In 2012 the population was 116,210; this represented a minimal increase of 0.1% since 2010. Angus has 2.2% of Scotland's overall population.
- 1.3 27.9% of the Angus population are 60+; nationally this is 23.5%. 15.1% of the Angus population are aged 16-29; nationally this is 18.4%. So Angus has a growing population of older people, and a decreasing population of younger people.
- 1.4 By 2035 the population of Angus is anticipated to rise to 115, 299, an increase of 4.3%, which is around 1/3 of Scotland's overall population increase during this period (10.2%).
- 1.5 The population age group expected to increase most during this period are those aged 75+; there will be a 0.6% decrease over the next 25 years in the u16 age group.
- 1.6 This will be important to reflect in future provision of sports facilities, as younger age groups overall tend to participate more regularly, and in teams sports, fitness-based activities.
- 1.7 The change in the population profile could also have an impact on the economics of the area (less people of working age in the district, and therefore overall lower employment) and this could impact on discretionary spend, including participation.
- 1.8 In health terms there appear to be a significant number of deaths linked to cancer, circulatory diseases and respiratory diseases, in both males and females. The latter to categories could be reduced if more people were more regularly physically active.

**2 In door Facilities**

#  
**Existing Leisure Centres**

2.2 The map below shows the locations of existing leisure centres in Angus, and neighbouring Dundee.

#



2.3 Access to leisure centres is good across the district, except in the south west, north and north east, where residents have to travel for up to 30 minutes. Leisure centres comprise both wet and dry facility provision.

**Overview of Existing Swimming Provision**

2.4 Swimming Pools

- Three of the district’s swimming pools are on school sites at Brechin, Carnoustie and Monifieth High Schools. These all have secured community use outwith school hours, at weekends and during school holiday periods.
- The five remaining pools at Arbroath Sports Centre, Forfar Swimming Pool, Montrose Sports Centre and Websters Sports Centre are all operated by the Council’s leisure services. In addition there a David Lloyd centre located in Monifieth which has a pool within the facility as a whole.
- The Montrose Sports Centre (cost £9m) was opened in November 2012. This comprised a brand new swimming pool development that was linked to an upgraded ‘dry’ sports facility.

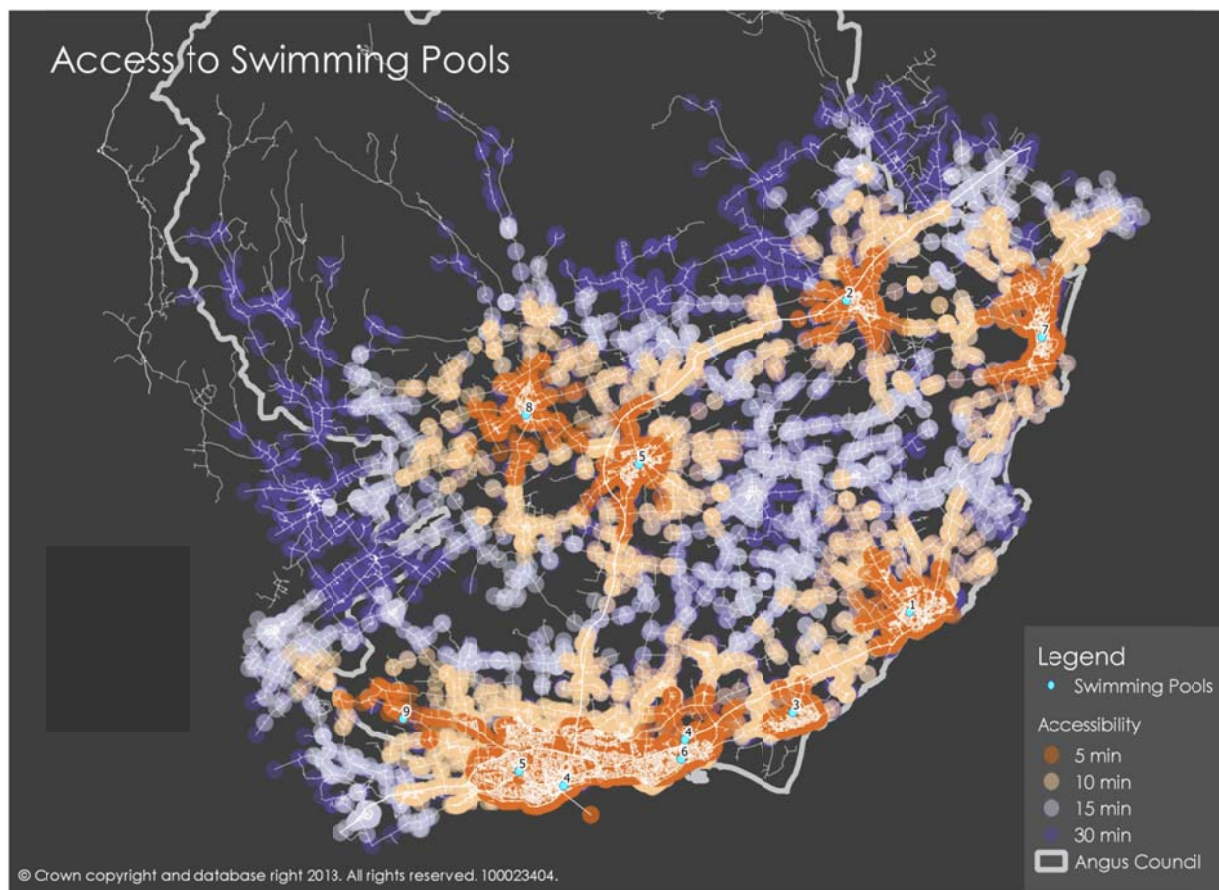
#

#

- Facilities at the new centre include:
    - 6 lane x 25m pool with spectator accommodation
    - studio pool with moveable floor
    - health suite
    - an open plan 50 station fitness suite
    - Cafeteria area and general purpose rooms.
  - These were connected to;
    - an existing sports hall, squash courts and junior gym facilities that were upgraded.
  - In Brechin a new community campus will be built and will incorporate school and community facilities on the same site. Sports and leisure based facilities will be of a very high standard and will include a new swimming pool, fitness suite, gymnasium, multi-purpose activity areas, a six badminton court size gameshall and outside there will be grass pitches along with a full size synthetic all-weather pitch.
  - A new community campus is also being built in Forfar with the new facilities replacing the existing Forfar Academy and the local swimming pool and sports centre. The games hall will be an eight court hall and the swimming pool facilities will be similar to those in Montrose.
  - Both campuses are scheduled to be built and be operating by autumn 2016.
- 2.5 The above proposals mean that the three swimming pools identified as the top priorities for investment/re-development in the district will have been addressed. Future investment in swimming pools will be determined after an update is undertaken of the work done in 2007.
- 2.6 Prior to the above investment, the major issue for the existing swimming pools was the quality of the facility provision, and its impact on participation levels.
- 2.7 A further issue is the fact that three pools are on school sites and so are only accessible to the public outside of school time. This means that only 50% of the existing 8 swimming pools are accessible 100% of the time to the public (3 pools are on school sites, and 1 is a commercial members' club).
- 2.8 A review of the national Facility Planning Model (FPM) run for the district demonstrates the following:
- The only two swimming pools which are considered to be operating at 100% capacity are Brechin High School and Carnoustie High School.
  - Overall, the model indicates that all pools in Angus are well used.
  - On average 75% of capacity is utilised, against a national average of 45.1% which indicates the pools are well placed to serve the population.
  - Critically, the analysis does not consider there to be enough unmet demand to warrant development of another swimming pool.
  - However, given the high usage rate of existing swimming facilities, the loss of any existing swimming pool facility would be likely to have a significant impact.
  - The full FPM pools' analysis for Angus, based on the national run, and summarised by **sportscotland**, is included as Appendix 6

## Accessibility

- 2.9 The map below highlights the location of existing swimming pools in Angus, together with their catchment areas, in relation to the existing population.
- 2.10 The map of the swimming pools in Angus shows the location and catchment areas of existing courses in the area. Catchment areas are based on access to facilities within 5, 10, 15, and 30 minutes and 1 hour; travel times are based using vehicular transport.



- 2.11 The map highlights that while a minority of the population can access a swimming pool within 5 minutes, the majority are within 10-15 minutes of a swimming pool. This represents good overall access across Angus, with the exception of those living in the extreme west, north west and north east. Residents in these areas have to travel for 30 minutes to access a swimming pool. However, they may be within a closer distance of pools in neighbouring districts.

## Summary of Swimming Pool Provision

- #
- 2.12 The Council identified a need some years ago (2007) to invest in its swimming pool stock to improve the quality of provision. The top three priorities for investment were identified, and these have now been addressed/are being addressed, through the opening of the new Montrose Swimming Pool and the committed investment into the Brechin and Forfar Campuses.
- 2.13 The next priority for investment will be Carnoustie Swimming Pool.
- 2.14 The existing swimming pools provide good access to all Angus residents, except those living on the district boundary in the west, north west and north east. Existing swimming pool facilities can, however, be accessed in around 30 minutes from these areas. In practice, this travel time requires private transport e.g. a car, to access provision.

- 2.15 The Facilities Planning Model (FPM) analysis for Angus confirms that all existing swimming pools are well-used. Whilst there are currently sufficient pools in Angus to meet demand, this would not be the case should any existing facilities close. This is due partly to the fact that three of the swimming pools operate on a secured community use basis and are only accessible to the community out of school hours, so the total available capacity of existing pools is already less than it would be if all facilities were accessible to the community 100% of the time.
- 2.16 Whilst there is currently sufficient swimming pool provision, the population of Angus is set to increase over the next 22 years. This means that consideration will need to be given to meeting additional demand for swimming.
- 2.17 Any new/extended development should meet **sportscotland** facility design guidelines, and provide increased community access.

### Key Issues

- The district has no 50m pool but this is not considered essential, given that such facility is within easy reach both in Dundee and Aberdeen.
- Additional pool provision and / or more effective use of pool resources will be needed in the medium to long term as the population grows. (E.G. improved flexibility of use and allocation of time to different groups; public swimming, sessions, lessons etc).
- The existing network of community swimming pools provides good overall access to the majority of Angus residents. However, some residents have to travel 30 minutes to access a pool.
- It will be important to ensure that areas of housing and therefore population growth, have good access to a swimming pool ie within 10-15 minutes travel.

### Sports Halls

- 2.18 There are in total 12 facilities described as sports halls in the Angus area located in six sports/leisure centres, five secondary schools and one in a private membership facility.
- 2.19 With regard to size, this has been looked at in terms of the number of badminton courts each hall can accommodate see Table 1 below;

#

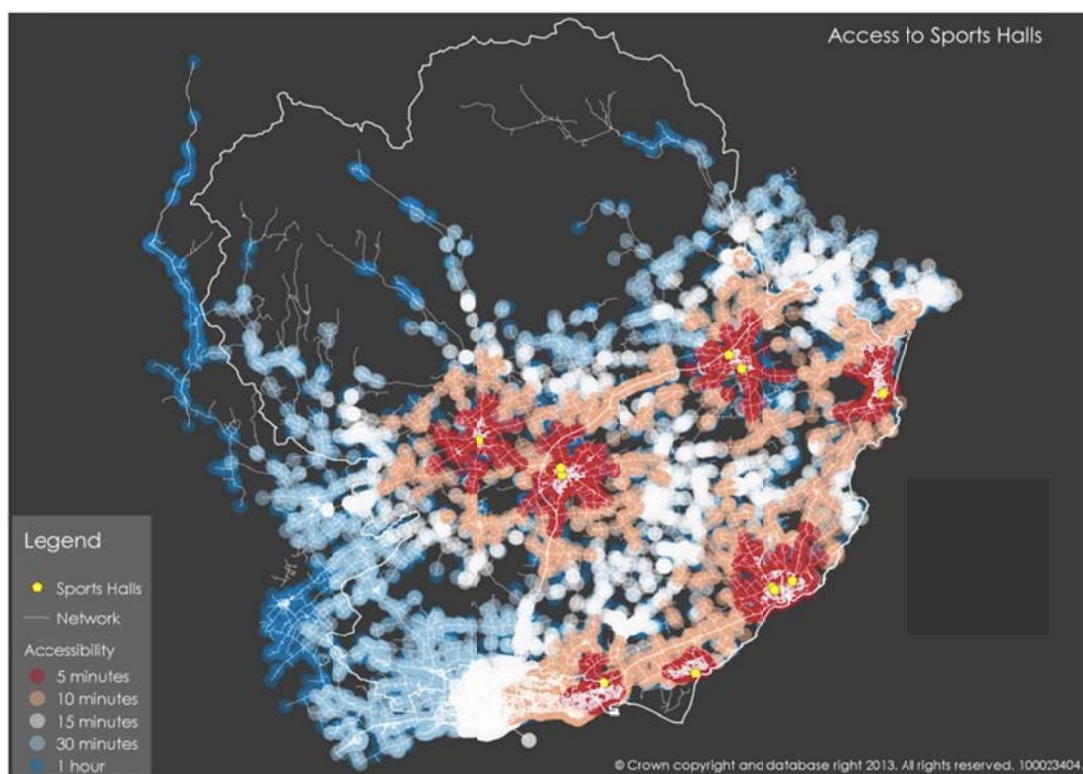
**Table 1. Badminton Courts in Angus**

FACILITY	No. of Badminton Courts in sports hall
Arbroath Sports Centre	6
Montrose Sports Centre	6
Websters Sports Centre	5
Brechin Leisure Centre	3
Carnoustie Leisure Centre	3
Lochside Leisure Centre	6
Arbroath Academy	3
Brechin High School	3
Carnoustie High School	3
Forfar Academy	3
Monifieth High School	3
David Lloyd Centre	8

- 2.20 The facilities at Arbroath, Montrose and Websters sports centres are dual use facilities with the school having priority of use during school hours.
  - 2.21 The facilities at Brechin, Carnoustie and Lochside leisure centres are available for public use throughout all opening hours. Schools can also book out these facilities at any time as well.
  - 2.22 At the remaining five secondary schools, the public would have access outwith school hours during term time, during school holidays and at weekends.
- #
- 2.23 A review of the national FPM run for the district demonstrates the following:
    - #
    - Overall the analysis for Halls demonstrates, as in most other local authorities that there are ample sports halls to satisfy existing demand.
    - If the sports halls on school sites were no longer available for community use then the level of satisfied demand drops slightly from 90.2% to 86.4%.
    - Importantly there is an increase, if only marginal of unsatisfied demand due to capacity constraints. Therefore the school estate does provide much needed access to sports halls in areas not served by sports centres.
- #
- 2.24 The full FPM halls' analysis for Angus, based on the national run, and summarised by **sportscotland**, is included as Appendix 6.

### Mapping Comments

- 2.25 The map of the sports halls in Angus shows the location and catchment areas of existing halls in the area. Catchment areas are based on access to facilities within 5, 10, 15, and 30 minutes and 1 hour; travel times are based on vehicular transport.





2.26 The access to existing sports halls is generally very good; the majority of existing residents have access to a sports hall course within 10-15 minutes, and most of those are within a 10 minute drive.

2.27 Residents living on, or just beyond, the borders of the Angus area, and particularly those in the south west, and north west are within an hour's access to existing sports hall facilities. Residents living out towards the border area are within 30 minutes of existing sports hall facilities.

#

2.28 The central and south east areas provide particularly good access to sports halls for residents.

#

2.29 The map demonstrates the importance of having locally accessible facilities in terms of facilitating and sustaining participation, and emphasises the importance of the dual-use facilities located on campus sites, given that they provide a very strong local network of provision.

#

### **Summary of Sports Hall Provision**

#

2.30 Existing sports halls in Angus are of reasonable quality overall, although there may be some need for investment in the medium to long term to maintain quality in terms of fabric and structural security and safety.

#

2.31 There are more than sufficient sports hall facilities in Angus to meet demand, a fact borne out by the FPM analysis. The existing stock of sports hall facilities has capacity and this will be sufficient to meet the increased demand as a result of population growth over the next 22 years, as long as current access arrangements are maintained.

#

2.32 Access to existing sports halls is generally good across Angus with the exception of those communities located out towards the border areas. The central and south east areas provide particularly good access to sports halls for residents.

#

### **Key Issues**

2.33 Angus has sufficient current provision of sports halls to meet demand.

2.34 Future demand for sports hall provision can be accommodated within existing facilities.

2.35 Access levels to existing facilities should be retained to ensure existing facilities are able to meet both current and future demand.

2.36 Provision should be made for some future investment given that halls are well-used, to ensure facility quality.

2.37 To the east and north of Angus travel times increase where geographical access to sports hall is less. In these areas other community provision for example community halls and other mobile provision will be important.

### 3 OUTDOOR FACILITIES

3.2 The strategy covers a number of key pitch sports and wider facility types that make up outdoor sports facility provision in Angus. In terms of pitch sports, the assessment and resulting strategy recommendations cover the sports of:

- **Football**
- **Cricket**
- **Rugby Union**
- **Hockey**
- **Artificial Grass Pitches**

3.3 In addition the strategy considers facility requirements for:

- **Bowling Greens**
- **Tennis Courts**
- **Athletics Tracks**

3.4 The strategy principally covers the period 2013 – 2020 (i.e. 7 years).

#### **Current Population and Projected Growth**

3.5 The general register for Scotland mid 2010 population projection data estimates by sex and year of age have been used for this study. The population projections for years 2013 and 2020 have been used as the basis of this study. It has not been possible to use small population area figures as there do not appear to be any data that can provide small area population data by year of age and sex.

3.6 In 2013 the projected population is 111,767. There is a female population of 57,342 and a male population of 54,425.

3.7 In relation to future growth, projections for population change are that Angus will have a population of 113,576 by 2020 (an increase of 1, 809 on the 2013 figures).

3.8 All playing pitch future demand modelling has been based on the 2020 projections.

#

#### **Methodology**

#

3.9 The strategy is based on an assessment of **pitches** using the guidance detailed in *Toward a Level Playing Field* (Sport England and CCPR). The *Towards a Level Playing Field* approach covers all elements set out in **sportscotland's** 'A guide to the Preparation of Pitch Sports Strategies'. This approach is based on an audit and assessment of the demand for, and supply of facilities. Its focus is on providing the means for deriving **local** standards, using **local** information, and developing policy to respond to **local** circumstances. An eight stage process is followed, and this is summarised below.

3.10 The assessment of **bowling greens** and **tennis courts** has followed the general approach of an audit and assessment of both supply and demand. The assessment of demand has drawn more on wider indicators of demand levels and supplemented with local research and consultation with stakeholders.

- #
- 3.11 The overall aim of the assessment methodology has been to determine the number of pitches required for each specific sport. In the case of Angus the methodology has been used to assess the adequacy of provision for:
- #
- **Football**
  - **Cricket**
  - **Rugby Union**
  - **Hockey**
- 3.12 An overview has been provided of **Artificial Grass Pitches** (AGPs), which provide training facilities (and match facilities for Hockey) for several of the sports assessed.
- 3.13 The methodology for assessing pitch sports comprises an eight-stage approach, as summarised overleaf. This involves a number of specific research tasks to build a comprehensive audit. A series of toolkits are used to analyse the data collected with the resulting assessment figures interpreted in consideration to the local context and results of stakeholder consultation. The toolkits, data modelling and audit data is included within the appendices to this report.

**Figure 1: The eight stages playing pitch model**

Stage	Description and Key Output
<b>Stage 1</b>	<b>Identification of the number of teams</b> Demand is established through a count of the number of teams for each sport using a variety of information sources, including pitch booking records, league handbooks, and a club survey. Latent demand and the impact of future population projections are also considered.
<b>Stage 2</b>	<b>Calculating home games per team per week</b> In a 'normal' situation for all sports, the number of home games is calculated as 0.5 of the total number of teams, representing weekly 'home' and 'away' fixtures.
<b>Stage 3</b>	<b>Assessing Total Number of Home Games per week</b> This is the product of Stages 1 and 2, and is therefore not independent. The resultant figure indicates how many games have to be accommodated in the study area in the average week.
<b>Stage 4</b>	<b>Establishing Temporal Demand for Games</b> This stage assesses the proportion of total home games played on each day. The data is expressed as a percentage of total weekly demand. This Stage will determine what percentage of all games is played on a Saturday for example.
<b>Stage 5</b>	<b>Defining pitches used / required on each day</b> This is the product of Stages 3 and 4, and is not therefore independent. The resultant figure will indicate the pitches used/required on each day and time e.g. Saturday p.m.

Stage	Description and Key Output
<p><b>Stage 6</b></p>	<p><b>Establishing pitches available</b> An accurate assessment of supply is produced which distinguishes between pitches for each sport and between ownership (public, private, voluntary and educational sites). In modelling the existing situation, only pitches currently available for the appropriate days/times will be relevant.</p>
<p><b>Stage 7</b></p>	<p><b>Assessing the Findings</b> The requirements to accommodate demand assessed at Stage 5 are then compared with the facilities as available at Stage 6. If the existing situation has been accurately modelled there should be either a good numerical fit between requirements and facilities available, or even 'surplus' provision on some days.</p>
<p><b>Stage 8</b></p>	<p><b>Identifying policy options and solutions</b> A range of policy options can be developed, such as new provision or pitch improvements, to help the problems identified at Stage 7. The method can then be used to further assess the impact of policy options, and contribute to the selection of the most cost-effective solution.</p>

*Adapted from Toward a Level Playing Field – Sport England and CCPR (Page 11)*

- 2.6 The assessment of non-pitch sports has been completed using a number of different methodologies to the eight stage approach described above. In the main this is because demand for these sports manifests itself in various forms.
- 2.7 For example in tennis and bowls, participation may be team based, individual participation, formal competitive sport or casual use. The assessments have therefore been completed through references to a number of demand databases and the existing and planned supply. A summary of the key method elements is included in the sport by sport summaries.

#### **Auditing Techniques and Data Gathering**

#### **Assessment of Supply**

- 2.8 The current supply of facilities was established through a series of data review, research and consultation exercised. These consisted of:
- Review of information held by Angus Council;
  - Review of information published on relevant websites - specifically local sports clubs and league websites;
  - Angus Council carried out a number of site audits using the Sport England Non-Technical Visual Assessment proforma;
  - Consultation with key stakeholders identified individuals involved locally in sport in Angus, local sports Clubs, identified schools);
  - An email survey to all identified sports clubs as agreed with Angus Council.

#### **Assessment of Demand**

- 2.9 In establishing the current demand for facilities a series of research consultation exercises were undertaken, specifically:
- An initial sports club questionnaire sent to all identified clubs within the authority area;
  - Analysis of local league data (where publicly available)

- 2.10 Inevitably, a number of key research tasks encompass the collection and collation of both supply and demand data, rather than an exclusive focus on one or the other.

#### **Data Collection Issues**

- 2.11 Establishing precisely how many facilities and clubs there are within the study area was difficult for a number of reasons.
- 2.12 For example, the number of pitches at a given site can fluctuate over short periods of time for reasons relating to management and husbandry. Team numbers also change from season to season.
- 2.13 The assessment of playing pitch supply and demand within the study should therefore be considered a "snapshot" in time and there is a need to ensure that the data used within the assessment is updated at appropriate intervals to ensure the on-going validity of the recommendations made.

#### **Data Analysis and Sub Analysis Structure**

##### **Defining Community Use**

- 2.14 A key component of the analysis was an examination of the extent to which pitches identified were in "secured public use". This was undertaken in the context of the Sport England definition of community use, and broadly embraces:
- All local authority pitches (Angus Council);
  - Educational facilities where they are subject to formal dual use, community use agreements or similar formal hire arrangements with local teams (this was assessed through a specific question in the Schools' consultation);
  - Any other institutional facilities in Angus which are available to the public as a result of formal dual / community use agreements;
  - Any facilities owned, used or maintained by clubs/private individuals, which as a matter of policy or practice are available by large sections of the public through membership of a club or admission fees; and
  - Formal playing pitches that are marked out and in use for the relevant pitch sports have been included in the modelling and analysis.

##### **Estimating and projecting future demand**

- 2.15 The team generation rates established for Angus overall have been used to identify growth that is likely to occur as a result of population increases. This is based on current demand profiles and the current percentage of residents that fall within the 'active population' (i.e. of sport playing ages 6 – 55years). These have been applied to future modelling to provide an indication of growth resulting from development work and specific programmes to increase participation in key sports. The rates used are:
- **Football:** based on a 1% growth rate over the next seven years, the projected population rate between 2013 and 2020 for pitch sports participants between the ages of 6 – 55 actually drops by 3,147.
  - **Cricket:** a 1% growth rate over the next seven years,
  - **Rugby Union:** a 1% growth rate over the next seven years, and
  - **Hockey:** a 1% growth rate over the next seven years.

- 2.16 It is worth noting that the actual active population of sport playing age 6 – 55 years actually declines in 2020 compared to 2013 by 3,147.

### **Quality Audit and Assessment**

#### **Natural Turf Pitches**

- 2.17 The quality of natural turf pitches has been assessed using a non-technical visual assessment proforma. This is part of the *Towards a Level Playing Field* toolkit and is included within the technical report appendices. The quality proforma (Appendix 4) collects a range of information about pitches based on a visual inspection. Specific criteria rated include:

- Grass cover;
- Length of grass;
- Size of pitch (and suitability);
- Slope;
- Evenness;
- Presence of common pitch problems; and
- Availability of changing rooms

- 2.18 Each pitch is scored out of a possible 100% and graded on a quality scale from 'Poor' through to 'Excellent'. A proforma is also used to provide a quality rating for the ancillary facilities serving the site and rates the quality of the changing accommodation, parking facilities and general site access.

#### **Settlement Hierarchy Analysis**

- 2.19 To build a more accurate picture of issues relating to surplus and deficiencies across the sports assessed, the data collected has been used to carry out a number of 'sub-analysis area assessments'. Put simply this means focussing on a number of smaller defined geographic areas within Angus to highlight particular hotspots of under or over supply or provision. For the purposes of this supply and demand has been considered on the basis of a hierarchy of settlements, as set out below:

- Arbroath – Including Friockheim and Wellbank
- Brechin – Including Edzell
- Carnoustie – Including Newbigging and Birkhill
- Forfar – Including Auchterhouse, Padanaram, Kingsmuir, Newtyle, Letham, Inveraldy
- Kirremuir
- Monifieith
- Montrose

## Assessment and Analysis – Pitch Sports

### Sport by Sport Assessment – Key Findings

- 3.1 Assessment using the Playing Pitch Model has been completed to provide an indication of the adequacy of provision for association football (soccer), cricket, rugby union, and hockey. Modelling results have been interpreted using findings from consultation with sports clubs and other stakeholders.

#### Football Assessment

- 3.2 The summary of the application of the eight stage model assessment for football is provided in the figures overleaf. Figures show the results of the current and future modelling (2013, and 2020). Future modelling has included the impact of population projections.
- 3.3 The Scottish Football Association (SFA) is the governing body responsible for football in Scotland. In 2009 the SFA combined with the Scottish Youth Football Association introduced the Scottish FA Youth Initiative. This set out the rules and regulations for the different age groups and provides a player pathway.
- 3.4 The Youth Initiative sets out that:
- Age Groups 6, 7, 8 can play Football Fun Fours between March – November.
  - Age Groups 9, 10 & 11 can play 7v7 between March to end of June and August to November.
  - Age Group 12 can operate between the first week in March to the last week in June (7v7) and then first week in August to June (11v11)
  - Age Groups 13, 14, 15, 16 & 17+ (11v11 Season) operate from August to the following June.

#### Number of Teams (Demand)

- 3.5 The audit for the strategy assessment has been undertaken using the 2012/13 season with information provided by Angus Council, clubs, and league and team web sites. This has been undertaken to provide the real picture of football in Angus and taking into account the youth football format.
- 3.6 The audit of the 2012/13 season identifies 66 adult teams, 51 junior teams (aged 10 – 15 years) and 18 teams (aged 6 – 9 years). Totalling 135 teams. The breakdown of these teams is shown in Table 3.1.

**Table 3.1 – Football Teams in Angus 2013/14**

Team Type	Number of teams
Aged 6 – 9 years	18
Junior Football - Boys (Aged 10 – 15)	44
Junior Football – Girls (Aged 10 – 15)	7
Senior Football – Men’s (Over 16)	61
Senior Football – Women’s (Over 16)	5
<b>TOTAL NUMBER OF TEAMS</b>	<b>135</b>

- 3.7 Appendix 1. Identifies the demand and number of teams. It provides the name of the club, the number of teams, and the ages of the teams, where they play, and the league they participate in and the day and time of the week team’s play.
- 3.8 Although Table 3.1 identifies 18 teams under 10 playing 7 v 7 football. There are a further 10 teams under 11 playing 7 v 7 football in the 10 – 15 years age group. The current number of

teams playing 7 v 7 football across Angus is 28 teams. The number of junior teams playing 11 v 11 is 41 and senior teams playing 11 v 11 is 66.

- 3.9 Table 3.2. Identifies the number of teams by Settlement Hierarchy. It can be seen that Arbroath has the highest number of teams overall 35.
- 3.10 The next hotspot is Forfar with 31 teams followed by Montrose 18 teams, Monifeith 15 teams, Carnoustie 14 teams, Brechin 13 teams and Kirremuir 9 teams.

**Table 3.2 Number of team’s by Angus Settlements.**

Angus – Number of Football Club Teams by Angus Settlement.				
	Total	Adult	Youth all formats	U10s
Arbroath – Including Friockheim and Wellbank	35	19 13		3
Brechin – Including Edzell	13	5 6		2
Carnoustie – Including Newbigging and Birkhill	14 8		3	3
Forfar – Including Auchterhouse, Padanaram, Kingsmuir, Newtyle, Letham, Inverlardy	31	15 12		4
Kirremuir	9	3 4		2
Monifeith	15	7 6		2
Montrose	18	9 7		2

### Team Generation Rates

- 3.11 Team Generation Rates are expressed as Teams per 1,000 population in age group. Table 3.4 below shows the team generation rates for Angus. The population in age group to generate 1 team should be used to identify the number of teams that will be produced from future projected population figures per age group.

**Table 3.4 – Team Generation Rates for Football in Angus**

Football Team Type	Age- Group Population	Current number of teams 2013	Teams Generated per 1000 pop	TGR – Population in Age Group to generate 1 team
Soccer 6 – 9 year olds	3662	18	4.9	203
Junior Football: Boys 10 – 15 years	3130	44	14.1	71
Junior Football: Girls 10 – 15 year olds	2896	7	2.4	414
Senior Football: Men 16 – 45 year	17677	61	3.5	290



Football Team Type	Age- Group Population	Current number of teams 2013	Teams Generated per 1000 pop	TGR – Population in Age Group to generate 1 team
olds				
Senior Football: Women 16 – 45 year olds	17544	5	0.3	3509

3.12 Utilising the Playing Pitch Methodology (PPM) and the team generation rates plus a 1% growth in football the PPM predicts that Angus will have the following football teams in 2020:

- 18 Under 10s
- 50 junior football teams (Boys and Girls 10 – 16 years)
- 63 adult teams (Men and Women)

3.13 The population in participant ages 6 – 55 declines but the study has built in a 1% growth due to sports development work – this maintains the level of football at Under 10 and reduces juniors by one team to 50 but decreases the number of adult teams by 3 to 63.

3.14 The team generation rates should be used as a standard against the population in the future.

### Supply of Pitches

3.15 Table 3.5 shows the number of pitches identified and assessed as part of the Playing Pitch Assessment. Appendix 2. Identifies the supply of pitches by settlement and by site within Angus.

3.16 The playing pitches are also mapped as part of the map appendices. Map Picture 7 – a-side Football Pitches and Map Picture 11 a –side Pitches identifies the locations of football pitches across Angus.

**Table 3.5 – Number of pitches available Pitches with secured public use in the Angus area**

Angus – Supply of Football Pitches by Settlement	Total	Adult – Junior 11 v 11	Junior – 7 v 7
Arbroath – Including Friockheim, Cliffrun and Wellbank	37	17	20
Brechin – Including Edzell	15	7	8
Carnoustie – Including Newbigging, and Birkhill	10	4	6
Forfar – Including Aucterhouse, Padanaram, Kingsmuir, Newtyle, Letham, Inverlardy	19	12	7
Kirremuir	4	2	2

Angus – Supply of Football Pitches by Settlement	Total	Adult – Junior 11 V 11	Junior – 7 v 7
Monifeith – Including Duntrone & Monikie	10	4	6
Montrose	158		7
<b>Total</b>	<b>110</b>	<b>55</b>	<b>56</b>

3.17 The overall supply of football pitches in Angus equates to :

- Adult & Junior 11 v 11 = 55 pitches
- Junior 7 v 7 = 56 pitches

3.18 In addition 4 v 4 soccer for under 8s takes place on Saturday mornings at Station Park in Forfar and two schools have pitches marked for 5 v 5.

3.19 The supply of pitches is in line with the demand of pitches across Angus and in relation to the Settlement hierarchy.

3.20 The Map Pictures 5g 7 V 7 and 5h 11 v 11 – show all known football facilities across Angus. The maps show that the majority of pitches are provided in the main settlements and access is good across Angus with the exception of the North, North East and North West where some residents would have to travel up to 20 minutes to access a football pitch.

3.21 In addition the individual Map Pictures for Arbroath (5b), Brechin (5c), Forfar and Kirriemuir (5d) Monifieth (5e) and Montrose (5f) all show easy access to football pitches. Monifieth pitches are also easily accessible to some Dundee City residents.

### Ownership of facilities

3.22 The number of pitch sites is divided into different ownerships. Angus Council Leisure provides 57% of all football pitches. Angus Education provides 17% and facilities leased to clubs or provided by clubs 26%.

3.23 Angus Council provide the most number of football pitches 36 x 11v11 and 27 x 7v7 pitches. 15 x 11v11 are provided by pitches leased to club or owned by a club. Table 3.6 identifies the ownership.

**Table 3.6 Angus Ownership Football Pitches.**

Angus – Ownership of Football Pitches	Total	Adult – Junior 11 V 11	Junior – 7 v 7
Angus Council – Leisure	63	36	27
Angus Council Education	19	4	15

Angus – Ownership of Football Pitches	Total	Adult – Junior 11 V 11	Junior – 7 v 7
Clubs, Private or Leased to Clubs	29 15		14

### Pitch Consultation and Quality Assessments

- 3.24 Site assessments for quality were carried out on 84 out of 111 football pitches. The quality template used is provided in Appendix 4 with the summary quality document. In addition changing facilities were audited.
- 3.25 The majority of Angus Council football pitches were seen as average or good. Two Council pitches were identified as poor these are Cliffburn Park and Victoria Park no 1 7 – a –side.
- 3.26 Two other pitches were rated as below average these were Birkhill Park both pitches and Steele Park, Forfar. In addition to these pitches the following pitches were rated as below average:
- Inverarity Primary School 5v5
  - Tannadice Primary School
  - Monikie Primary School 7v7
  - Tealing – Inveraldie Park
- 3.27 As good practice Angus Council should aim for all pitches to score ‘good’ as a quality score. All pitches that are rated ‘Poor’, ‘Below Average’ and ‘Average’ all have issues regarding:
- Evidence of glass/stones/litter/dog fouling
  - Evidence of unofficial use
  - Evidence of damage to surface
  - Poor line marking quality
- 3.28 Key points from the consultation has identified that the clubs that use the Council facilities have a perception:
- that maintenance is not what it used to be;
  - one club that leases a facility from the Council is awaiting storm damage repair to a fence since 2011;
  - that rents for leased pitches have increased significantly;
  - in the past sports clubs have been able to apply for funding to the council’s Community Grant Aid fund to help with upgrading facilities;
  - some clubs could fold if they are not allowed to keep the fund raising car boot funds. At the moment they have to pay a percentage to the Council’s Estates and Property Department;
  - there is a need for an artificial pitch in Monifieth so clubs do not have to travel to train;
  - the new 3G all weather surface at Station Park is heavily subscribed and unavailable for hire on two evenings per week. Clubs in Forfar would like to see an improved all weather training area in Guthrie Park for the use of both Forfar Albion JFC and Forfar Boys Club teams;
  - there is insufficient car parking at some football pitches and this causes problems;

- there is a perception that Hercules Den could be used more particularly on a Saturday;
- clubs in Carnoustie would like to improve land across from Carnoustie High School to provide additional pitches and changing rooms.
- there is a perception the all weather pitch at Carnoustie is not fit for purpose and clubs have to travel to Dundee for training in the winter months. Centralising facilities near the High School would be welcomed;
- there are grass cutting issues in particular at Friockheim;
- other perceptions by football clubs of Council facilities include poor maintenance, poor line marking, condition of goalmouths needs to improve, damage to the pitch by off road motor bikes is a further concern and the issue of dog fouling on or around pitch areas.

3.29 The last bullet point raises the issues identified by the quality assessment for those pitches rated Average, Below Average or Poor.

### **Changing Facilities**

3.30 The quality audits identified 13 sites with changing facilities out of 43 sites.

3.31 10 of the 13 sites with changing facilities have been given a quality rating as these facilities were audited.

3.32 3 sites received an 'Excellent' rating – Forfar Academy, Lochside Park and Market Muir. Hayshead School received a 'Good' rating. The following were rated as 'Average' Dempster Park, Timmergreens School, Inverbrothock School, Ladyloan School and Muirfield School. St Thomas School was classed as poor.

3.33 There are a lot of outdoor football pitch sites without changing accommodation and this was picked up as part of the consultation where clubs have stated that "Due to lack of changing rooms that meet league requirements clubs have to travel far from home to use pitches with changing facilities".

### **Current Supply and Demand**

3.34 The supply and demand data collated was analysed to provide a quantitative assessment. Put simply the assessment provides an initial indication of the adequacy of provision to cater for estimated demand. A summary of the application of the Towards a Level Playing Field eight stage model assessment for football is provided in table 3.7.

3.35 Table 3.7 sets out the number of teams identified in Angus and therefore how many home games there are per week i.e. assuming half the teams play home games each week, and the other half play away games each week. Based on the total number of home games each week, and the peak times at which pitches are needed i.e. the time when most home games are played, the methodology then calculates how many pitches are required at any one time during this period of peak demand. This figure is effectively the 'worst case scenario' for pitch demand; meeting this is the minimum level of provision that should be made. Further details of how the following figures have been calculated are included within the appendices to this report Appendix 3 Playing Pitch Methodology Angus

**Table 3.7: Football Assessment Results District Wide 2013**

Model Stage		Results		Comments
1	Identifying teams	7 v 7 Soccer	18	Identified through audit completed and including 'regular' season teams only – includes exported teams but not disability counts teams.
		Junior Football and Senior Football 11 v 11	117	
2	Home games per week	7 v 7 Soccer	0.5	Junior and senior teams play home and away fixtures – demand equates to 1 pitch every other week or an average of 0.5 per week. We have assumed mini soccer also play on 1 pitch every other week
		Junior Football and Senior Football 11 v 11	0.5	
3	Total home games per week	7 v 7 Soccer	9	Results of Stage 1 x Stage 2
		Junior Football and Senior Football 11 v 11	54	
4	Establishing temporal demand for games	7 v 7 Soccer	100% Sun a.m.	Peak demand and percentage of matches played at this time
		Junior Football	86% Sun a.m.	
		Senior Football	47% Sun a.m.	
5	Defining pitches required each day	7 v 7 Soccer	14	Figures show pitch requirements at peak time.
		Junior Football 11 v 11	20	
		Senior Football 11 v 11	33	
6	Establishing pitches available	7 v 7	41	Figures are established from the audit but do not include 15 7 v 7 pitches on school sites.
		Junior Football 11 v 11 and Senior football 11 v 11	54	
7	Assessing the findings	7 v 7 Soccer	<b>+ 14 pitches</b>	Figures do not take account of quality.
		Junior Football 11 v11 and Senior Football 11 v 11	<b>+ 25 pitches</b>	

Model Stage		Results	Comments
8	Identifying policy options and solutions	7 v 7 Soccer	Findings discussed in more detail below
		Junior Football 11 v 11 and Senior Football 11 v 11	

3.36 The results show:

- **A theoretical surplus of dedicated 7 v 7 pitches +14 – however these figures do not take pitch quality into consideration.**
- **A theoretical surplus of junior and senior 11 v 11 football pitches + 25.**

3.37 The results are based on pitches required to accommodate peak demand. In addition football clubs train on the same facilities as they use for matches. This changes the picture of demand and will increase the demand for junior and mini soccer pitches.

3.38 The demand in 2020 due to the decline in the playing pitch population participation levels is the same as 2013 for 7 v 7, junior teams to 50 reduced by 1 team and a decrease of 3 teams for adults to 63 teams. There are no issues in respect of the settlement hierarchy of provision of playing pitches.

### Football Summary - Recommendations and Priorities

#### General

- 3.39 Although there is a surplus of all football pitch types across Angus in 2013 and 2020 not all of these are in Angus Council ownership. These pitches must be protected through the planning process. The provision of an over supply of 7 v 7 and junior and adult 11 v11 pitches will allow for the resting of some pitches and training to be undertaken on others.
- 3.40 Angus Council may wish to invest in maintenance of those pitches that are of a 'Poor', 'Below Average' or an 'Average' quality. All pitches should aim to meet a 'Good' quality standard.
- 3.41 13 sites were identified with changing facilities. Of these three scored excellent and 1 good. The remaining changing facilities were classed as average or poor. If capital funding can be found then changing facility refurbishment or new provision should be considered.
- 3.42 The Team Generation rates should be used to identify the requirements for pitches on site of a development. The population of a development will determine the requirement for the number of pitches and type of pitches by the number of bedrooms in each house developed. Off site developer contributions should be sort when a development is close to existing pitches to either improve changing facilities or enhance the carrying capacity of the playing pitch by improving the pitch surface and drainage.

### Cricket Assessment

3.43 The summary of the application of the eight stage model assessment for cricket is provided in the figures overleaf. Figures show the results of the current and future modelling (2013, and 2020). Future modelling has included the impact of population projections.

#### Number of Teams (Demand)

3.44 The audit for the strategy assessment has been undertaken using the 2012/13 season with information provided by Angus Council, clubs, and leagues.

3.45 The Playing Pitch assessment has identified that there are 4 clubs in Angus with 22 teams. The breakdown of these teams is shown in Table 3.10.

**Table 3.10 – Cricket Teams in Angus 2012/13**

Team Type	Number of teams
Junior Cricket - Boys (11 – 17)	13
Senior Cricket – Men’s (18 – 55)	9
<b>TOTAL NUMBER OF TEAMS</b>	<b>22</b>

3.46 Appendix 1. identifies the demand and number of teams and also provides the name of the club, the number of teams, the ages of the teams, where they play, which league they participate in and the day and time of the week they play.

3.47 The four clubs are Montrose Cricket Club, Arbroath United Cricket Club, Brechin Buccaneers Junior Cricket Club, and Strathmore Cricket Club.

3.48 Strathmore and Arbroath have seven teams. It is a regulation of the Strathmore and Perthshire Cricket Union that all teams playing in its leagues have to develop junior cricket. All four of the teams playing in Angus play in this league.

#### Team Generation Rates

3.49 Team Generation Rates are expressed as Teams per 1,000 population in age group. Table 3.11 below shows the team generation rates for Angus. The TGR – population in age group to produce one team should be used to guide the number of teams using future population data,

**Table 3.11 – Team Generation Rates for Cricket in Angus**

Cricket Team Type	Age-Group	Current Population	Current number of teams	TGR – Population in Age Group to generate 1 team
Junior Cricket Boys	11 - 17 year olds	3894	13	300
Senior Cricket Men’s	18 - 55 year olds	24542	9	2727

#### Supply of Pitches

3.50 Table 3.12 shows the number of pitches identified and assessed as part of the Playing Pitch Assessment. Appendix 2. Identifies the supply of pitches by settlements and by site within Angus.

3.51 The cricket squares are also mapped as part of the map appendices Map 5a.

**Table 3.12 – Number of squares available in Angus for community use.**

<b>Angus – Supply of Cricket Squares by Settlements</b>	<b>Squares</b>
<b>Angus Overall</b>	<b>5</b>
<b>Arbroath</b>	<b>1</b>
<b>Brechin</b>	<b>1</b>
<b>Forfar – Including Auc terhouse, Padanaram, Kingsmuir, Newtyle, Letham, Inveraldy</b>	<b>2</b>
<b>Montrose</b>	<b>1</b>

### Current Supply and Demand

- 3.52 The supply and demand data collated was analysed to provide a quantitative assessment. Put simply the assessment provides an initial indication of the adequacy of provision to cater for estimated demand. A summary of the application of the Towards a Level Playing Field eight stage model assessment for cricket is provided in table 3.13.
- 3.53 Table 3.13 sets out the number of teams identified in Angus and therefore how many homes games there are per week i.e. assuming half the teams play home games each week, and the other half play away games each week. Based on the total number of home games each week, and the peak times at which pitches are needed i.e. the time when most home games are played, the methodology then calculates how many pitches are required at any one time during this period of peak demand. This figure is effectively the ‘worst case scenario’ for pitch demand; meeting this is the minimum level of provision that should be made. Further details of how the following figures have been calculated are included within the appendices to this report Appendix 3 Playing Pitch Methodology Angus.

**Table 3.13: Cricket Assessment Results District Wide 2013**

<b>Model Stage</b>		<b>Results</b>		<b>Comments</b>
<b>1</b>	<b>Identifying teams</b>	Junior Cricket	13	Identified through audit completed and including ‘regular’ season teams only – includes non affiliated teams,
		Adult Cricket	9	
<b>2</b>	<b>Home games per week</b>	Junior Cricket	0.5	Junior and senior teams play home and away fixtures – demand equates to 1 pitch every other week or an average of 0.8 per week.
		Adult Cricket	0.5	



Model Stage		Results		Comments
3	Total home games per week	Junior Cricket	7	Results of Stage 1 x Stage 2
		Adult Cricket	5	
4	Establishing temporal demand for games	Junior Cricket	100% Midweek	Peak demand and percentage of matches played at this time
		Adult Cricket	44% Sunday p.m.	
5	Defining pitches required each day	Junior Cricket	7	Figures show pitch requirements at peak time.
		Adult Cricket	5	
6	Establishing pitches available	Junior Cricket	4	Junior cricket is played midweek and all games can be provided by using two or three nights per week.  Senior games are shared between Saturday and Sunday and some midweek.
		Adult Cricket	4	
7	Assessing the findings	Junior Cricket	+ 1 pitches	
		Adult Cricket	+ 2 pitches	
8	Identifying policy options and solutions	Cricket	Findings discussed in more detail below	

3.54 The results show:

- **A theoretical surplus of dedicated cricket facilities +2 weekends and + 1 during the week.**

3.55 The results are based on pitches required to accommodate peak demand.

### Cricket Assessment Angus Wide – Future

- 3.56 We assessed the adequacy of cricket provision to meet future demand through estimating levels of future demand based on population in 2020. The playing pitch model has been used to assess future demand using the team generation rates, predicted population growth/decline and a 1% year-on-year increase in participation.
- 3.57 Future demand projects a surplus of +2 pitches.
- 3.58 Only one cricket pitch has been assessed for quality. This was Broomfield Park and was rated as 'Good'. As good practice all playing pitches should be rated as 'Good'.

### Cricket Summary - Recommendations and Priorities

#### General

- 3.59 Although there is a surplus of cricket pitches across Angus in 2013 and 2020 not all of these are in Angus Council ownership. These pitches must be protected through the planning process. The expansion and development of the junior game will impact on the use of wickets.
- 3.60 Team Generation rates should be used to identify the requirements for pitches on site of a development. The population of a development will determine the requirement for the number of pitches and type of pitches by the number of bedrooms in each house developed. Off site developer contributions should be sort when a development is close to existing pitches to either improve changing facilities or enhance the carrying capacity of the playing pitch by improving the pitch surface and drainage.

#### Rugby Assessment

- 3.61 The summary of the application of the eight stage model assessment for rugby is provided in the figures overleaf. Figures show the results of the current and future modelling (2013, and 2020). Future modelling has included the impact of population projections.

#### Number of Teams (Demand)

- 3.62 The audit for the strategy assessment has been undertaken using the 2012/13 season with information provided by Angus Council, clubs, leagues and the SRFU.
- 3.63 The Playing Pitch assessment has identified that there are 5 clubs in Angus affiliated to the SRFU with 32 teams. Strathmore RFU club 9 teams, Montrose Cricket and Rugby Club has 8 teams, Carnoustie HSFP Rugby Club 8 teams, Arbroath Rugby Club has 8 teams, and Brechin Junior Rugby club has 5 teams.
- 3.64 The breakdown of these teams is shown in Table 3.14.

**Table 3.14 – Rugby Union Teams in Angus 2013/14**

Team Type	Number of teams
Mini Rugby ( 6 – 12yrs)	13
Junior Rugby - Boys (13 – 17yrs)	11
Men's Rugby – Men's (18 – 45yrs)	8
<b>TOTAL NUMBER OF TEAMS</b>	<b>32</b>

#### Team Generation Rates

3.65 Team Generation Rates are expressed as Teams per 1,000 population in age group. Table 3.15 below shows the team generation rates for Angus.

**Table 3.15 – Team Generation Rates for Rugby in Angus**

Rugby Team Type	Age- Group	Population Within Age Group	Current number of teams	TGR – Population in Age Group to generate 1 team
Mini Rugby	8 – 12 years	4793	13	369
Junior Boys	13 - 17 year olds	2687	11	244
Senior Men's	18 - 45 year olds	16316	7	2331
Senior Women's	18 – 45 year olds	16238	1	16238

### Number of Pitches

3.66 Table 3.16 shows the number of pitches in 2013.

**Table 3.16 – Rugby Pitches in Angus 2013**

Pitch Type	Senior Rugby
Union Park – Montrose	2
East Links Park - Montrose	1
Monifieth High School	1
Inchmacoble Park – Forfar	3
Links Parade – Carnoustie	2
Brechin High School – Brechin	1
Victoria Park – Arbroath	1
Arbroath High School/Leisure Centre	1
<b>TOTAL NUMBER OF PITCHES IN SECURED PUBLIC USE</b>	<b>12</b>

### Current Supply and Demand

3.67 The supply and demand data collated was analysed to provide a quantitative assessment. Put simply the assessment provides an initial indication of the adequacy of provision to cater for estimated demand. A summary of the application of the Towards a Level Playing Field eight stage model assessment for rugby is provided in table 3.17.

**Table 3.17: Rugby Assessment Results Angus 2013**

Model Stage	Results	Comments
<b>1</b> <b>Identifying teams and team equivalents</b>	Rugby Union 13 senior teams 11 junior teams 8 Mini teams	Figures as identified through audit completed and including 'regular' season teams.
<b>2</b> <b>Home games per week</b>	Rugby Union 0.5	All teams play home and away fixtures – demand equates to an average of 0.5 per week.
<b>3</b> <b>Total home games per week</b>	Rugby Union 4 senior games 6 junior games 8 mini games	Results of Stage 1 x Stage 2

Model Stage		Results		Comments
4	<b>Establishing temporal demand for games</b>	Rugby Union	100% senior Sat p.m. 100% junior Sun a.m. 100% Mini Sun a.m.	Peak demand and percentage of matches played at this time
5	<b>Defining pitches required each day</b>	Rugby Union	4 senior pitches 6 Junior pitches 4 mini pitches	Figures show pitch requirements at peak time.
6	<b>Establishing pitches available</b>	Rugby Union	12 Senior pitches 0 Junior pitch	Figure shows all available pitch provision with community use
7	<b>Assessing the findings</b>	Rugby Union	+8 senior pitches these become adequate for junior and mini rugby on a Sunday - 5 Junior Sundays	Figures do not take account of quality. Quantitative assessment only.
8	<b>Identifying policy options and solutions</b>	Rugby Union	Findings discussed in more detail below	

3.68 **Temporal Demand for Games.** The assessment reveals that all junior and mini games are played on a Sunday and senior games on a Saturday.

3.69 **Current Supply and Demand Assessment: Rugby** – The quantitative assessment has revealed that there is a moderate theoretical **surplus of 8 senior pitches on a Saturday and a deficit -5.5 junior pitches** to meet peak demand in rugby in 2013 on a Sunday.

3.70 It is common practise for junior 10 teams to use the senior pitches on a Sunday so there is no current deficit in rugby pitches.

3.71 From 2020 there is still the same surplus as in 2013.

3.72 Three Rugby pitches were assessed for quality these were Arbroath High School rated as 'Good', East Links Park rated as 'Good' and Monifieth High School rated as 'Average'. As good practice all pitches should aim for a 'Good' rating.

## Rugby Conclusions Recommendations

### Summary

3.73 Although there is a surplus of rugby pitches across Angus in 2013 and 2020 not all of these are in Angus Council ownership. These pitches must be protected through the planning process. The provision of an oversupply will allow clubs to rest some pitches.

3.74 The Team Generation rates should be used to identify the requirements for pitches on site of a development. The population of a development will determine the requirement for the number of pitches and type of pitches by the number of bedrooms in each house developed. Off site developer contributions should be sort when a development is close to existing pitches to either improve changing facilities or enhance the carrying capacity of the playing pitch by improving the pitch surface and drainage.

### Hockey Assessment

3.75 The game is currently played predominately on sand based artificial grass pitches. There are 2 Hockey Clubs in Angus. Monarchs Hockey Club and Brechin Thistle Hockey Club.

3.76 Monarchs Hockey Club is a men’s Hockey Team. They have three teams. One team is in the Scottish National League and the remaining two teams are in the Midland Men’s League. Although Monarchs would like to be based in Angus at Arbroath Leisure Centre AGP (Only Sand Based Pitch in Angus) because of the quality of the National League the first team use an AGP at Disc and the seconds use an AGP at Dawson’s Park in Dundee. The thirds and the Development Team use the Arbroath pitch on a Saturday.

3.77 Brechin Thistle is a Ladies Hockey team with one team playing in the Midland Ladies League. They currently play at Arbroath Leisure Centre AGP on a Saturday.

### Team Generation Rates

3.78 Team Generation Rates are expressed as Teams per 1,000 population in age group. Table 3.19 below shows the team generation rates for Angus.

**Table 3.19 – Team Generation Rates for Hockey in Angus**

Hockey Team Type	Age- Group	Population within age group	Current number of teams	TGR – Population in Age Group to generate 1 team
Senior Men’s	16 – 45 year olds	17677	3	5892
Senior Women’s	16 – 45 year olds	17544	1	17544

### Number of Pitches

3.79 Table 3.20 shows that there is only 1 sand dressed AGPs currently available for community use in 2013.

**Table 3.20 – Hockey Pitches with secured public use in Angus 2013**

Pitch Type - Hockey Sand Based	AGP
Arbroath Leisure Centre	1
<b>TOTAL NUMBER OF PITCHES IN SECURED PUBLIC USE</b>	<b>1</b>

### Current Supply and Demand

3.80 Temporal Demand for Games. The assessment reveals that all junior games are played on a Sunday and Senior games on a Saturday.

3.81 Current Supply and Demand Assessment: Hockey – The assessment has not used the Towards a Level Playing Field in the case of hockey. The reason being is that there are only two teams playing at home at the Arbroath Leisure Centre and the pitch meets their needs.

3.82 However, the quality of the pitch means that 2 Monarch Hockey teams use pitches outside of Angus.

3.83 In 2020 the demand is likely to grow by one team.

### Hockey Conclusions Recommendations

3.84 Angus Council should work with Monarch Hockey club to identify funding streams to up grade the existing sand based AGP at Arbroath Leisure Centre and or refurbish the sand based pitch at Arbroath Leisure Centre and seek an alternative site for a water based hockey pitch in Angus.

3.85 The Team Generation rates should be used to identify the requirements for pitches. Off site developer contributions should be provided to assist in upgrading or providing a new sand based hockey pitch in Angus.

### Artificial Grass Pitches

3.86 Artificial pitches are increasingly used in competitive sport.

3.87 There are two types of artificial pitch in Angus:

- Sand Based/ Sand Filled – This surface has a short pile and is most suited to hockey but can be used for football training.
- 3G or Rubber Crumb – This surface has a long pile and is most suited to football and rugby

3.88 Table 3.21 identifies the number and type of AGPs in Angus. Map Picture Artificial Turf Pitches shows where these pitches are located.

**Table 3.21 Number and type of AGPs in Angus**

Location	Type	Ownership
Arbroath High School/Arbroath Leisure Centre	Sand Based	Local Authority
Pitskelly Park, Carnoustie	Sand Based	Local Authority
Brechin Leisure Centre	3G 5-a-side	Local Authority
Station Park - Forfar	3G 11-a-side	Local Authority
Webster Sports Centre	3G 7-a-side	Local Authority
Wellington Street - Montrose	3G 11-a-side	Montrose FC

3.89 There is a need to refurbish the existing synthetic turf pitches for hockey and consider a water based pitch in Angus in the future.

3.90 Consultation revealed that football clubs in Forfar would like an additional AGP for training purposes in Guthrie Park Forfar.

3.91 Monifieth football clubs feel that they should not have to travel to Dundee to train in the winter months and would like to Monifieth to be considered as a suitable location for a 3G pitch in future. Map 5I and 5J show the travel time and supports this argument that an artificial pitch would help accessibility to one in the Monifieth area.

3.92 Sport is very parochial across Angus. Clubs prefer to use facilities close to where their club base or members live. This means provision of sufficient training facilities close to the clubs home base.



### 3.93 Non-Pitch Sports: Assessment Methodology

3.94 The assessment of demand for and supply of, Outdoor Bowling Greens and Tennis Courts falls outside the scope of the assessment methodology detailed in 'Towards a Level Playing Field' (Sport England 2003). A number of factors make these sports difficult to assess, from both a demand and supply perspective. These include:

- **Demand** for these sports manifests itself in a variety of ways. Participation for example, can be on an individual, casual basis or as part of a team playing in a formal competitive match.
- **Access** to facilities, which can be complex in some cases. For example, membership policies of clubs can vary from full open access, through to nomination based policy. Casual use of facilities can vary from the need to purchase a season ticket through to traditional pay and play access of facilities are staffed.
- **Supply** of facilities can also vary greatly. The actual size of a bowling green for example, whether it has floodlighting, and the presence of ancillary facilities can greatly affect the capacity of facilities to meet demand.

3.95 The assessment of Bowling Greens and Tennis Courts has been undertaken on the basis of:

- An audit of known facilities within Angus.
- Consultation with existing Bowls, and Tennis Clubs to determine current membership profiles and the likelihood of growth or decline in the future. Clubs were also asked to rate the quality of facilities used and to identify key facility related issues.

3.96 In undertaking the assessment of non-pitch sports a number of key factors have been considered, including:

- What are the opportunities for potential new participants to take part in the sport?
- Are there particular access issues for potential new participants, including cost of participation and geographical location of facilities?
- Are the needs of current participants met by current facilities?

### Bowling Greens

3.97 Bowling Greens as sports facilities accommodate a range of formal and casual use. Demand manifests itself through differing uses, such as formal bowling teams using facilities for league games, or for individuals to bowl on a more casual or informal basis. Bowling greens throughout Angus are mainly provided as public facilities (often in parks) and private facilities (through private bowling clubs) all identified bowling greens are represented in Table 3.22. Map Picture 5K Access to Bowling Greens shows where the bowling greens are located and shows that Angus residents in the main settlements have easy access to bowling greens.

### Quantity: Bowling Greens

3.98 It is important to note that no recognised standard of provision exists for bowling greens at a national level. It is also important to recognise that bowling is a demand led sport.

3.99 There are 21 known clubs across Angus and these clubs and their venues are identified in Table 3.22 below. There are ten facilities owned or leased to clubs by Angus Council. Some



are held on Common Good Accounts, some are occupied by either Minutes of Agreements or long leases, and some are occupied without any formal agreements in place at all.

3.100 The bowls clubs are shown in Map Picture 5K.

**Table 3.22 Bowls Clubs and Venues across Angus**

Settlements	Club Name	Greens	Known Membership	Ownership
Arbroath	Abbey Bowling Club	2 Greens – 12 rinks	145 decrease by 14 members	Arbroath Common Good - Angus
	Arbroath Newgate Bowling Club		Not Known	Private Owned
	Lochlands Bowls Club	1 Green – 6 Rinks	62 remain the same	Arbroath Common Good – Angus
	Friockheim Bowls Club	1 Green – 6 Rinks	25 remain the same	Angus Council
Brechin & Edzell	Brechin Bowls Club		Not known	Private owned
	Parkview Bowls Club	1 Green – 6 Rinks	Not Known	Owned by Brechin Common Good – Angus Council
	Edzell Bowling Club	1 Green – 6 Rinks	28 Remain the same	Dalhousie Estate
Carnoustie	Carnoustie Bowling Club	1 Green – 8 Rinks	110 remain the same	Private Club owned
	Muirhead Birkhall Bowling Club	1 Green – 6 Rinks	100 to decrease by 20	Angus Council Club – Minute of Agreement 2014 – Club pursuing Community Asset Transfer
Forfar	Forfar Bowls Club	1 Green – 6 Rinks	125 members decrease by 20 members	Private club owned
	Boyle Park Bowls Club	1 Green – 6 Rinks	52 decrease by	Angus Council

Settlements	Club Name	Greens	Known Membership	Ownership
			10	- Minute of Agreement
	Canmore Bowling Club		Not Known	Private Club Owned
	Letham Bowling Club	1 Green – 6 Rinks	68 Remain the same	Private Club Owned
Kirriemuir	Kirremuir Bowls Club	1 Green – 6 Rinks	120 decrease by 20 members	Private Club Owned
Monifieth	Monifeith Bowls Club	1 Green – 8 Rinks	180 hope to grow	Private Club Owned
Montrose	Hope Paton Bowls Club	1 Green – 6 Rinks	70 members decrease by 10	Montrose Common Good - Angus Council – Minute of Agreement
	Montrose Bowls Club	1 Green – 6 Rinks	80 members decrease by 10	Private Club Owned
	Melville Bowling Green Club	1 Green – 6 Rinks	22 Members likely to decrease	Angus Council – Membership paid to Angus Council
	Inch Bowling Club	1 Green – 6 Rinks	20 members likely to decrease	Angus Council – Membership paid to Angus Council
	Hillside Bowls Club	1 Green – 7 Rinks	25 members remain the same	Angus Council- Membership paid to Angus Council
<b>Total</b>	<b>21</b>			

3.101 All the bowls clubs were sent a questionnaire of which 17 out of 21 responded. The main problems perceived by the clubs include:

- vandalism,
- the need for specialist grounds maintenance,
- Improvement to disabled toilet facilities on council owned facilities.

3.102 Seventeen clubs informed the study of the current membership. The average membership of the 17 clubs is 69 with a range of members at clubs ranging from 20 (Inch Bowling Club) to 180 (Monifieth Bowling Club). Six clubs believe that their membership will remain the same, 2 clubs believe their membership will grow, 9 clubs believe their membership will decrease and 4 clubs did not reply.

3.103 The majority of clubs identified a difficulty in retaining and recruiting members.

3.104 The cost of maintaining a bowling green for Angus Council is approximately £15,000 p.a (Source Angus Council) This consists of Planned Maintenance (grass cutting, shrub bed maintenance, summer bedding maintenance, hedge cutting, scarify greens, channel maintenance, tree maintenance, etc., and Unplanned Maintenance (fertilising, chemical applications and autumn renovations) plus the other costs per above.

3.105 The current position where clubs occupy bowling greens on different terms and conditions and some occupy without any supporting agreement is inconsistent, inequitable, can cause conflict and is considered to be unsatisfactory.

3.106 Angus Council's Corporate Services Committee of 29th November 2012 approved the policy of:-

(a) tenants with Minutes of Agreements being offered leases on standards terms and conditions from 1st April 2013, or on expiry, with the new rent payments being phased in over a period of three years; and

(b) Where no lease exists, tenants being offered leases on standard terms and conditions from 1st April 2013 with the new rent payments and running charges being phased in over a three year period.

3.107 There are four bowls clubs with low membership:

- Fricockheim Bowling Club (25 members),
- Inch Bowling Club (20 members),
- Melville Bowling Club (22 members) and
- Hillside Bowls Club (25 members)

3.108 Fricockheim Bowls Club has an agreed lease with the Council for 25 years starting 2008. The lease rental was paid at the beginning of the lease by the club.

3.109 The three clubs at; the Inch, Melville and Hillside are all within Montrose. Due to the number of current members it would be appropriate for Angus Council to discuss the amalgamation of the three clubs into one. The membership of the new club would be 67 and be in line with the average membership of clubs in Angus (69).

3.110 No quality audits were undertaken of bowls facilities.

#

## Recommendations

3.111 The recommendations are:

- a. Angus Council where possible to ensure that all terms and conditions of leases are consistent, and equitable.
- b) Angus Council to work with three bowls clubs in Montrose; the Melville Inch, and Hillside clubs to discuss the clubs amalgamation into one club one green. This will reduce the current supply of greens to improve the quality of the remaining green and ancillary facilities and ensure sustainable quality facilities for the future.
- c) Work with the local Bowls Clubs to promote the sport in Angus, and encourage participation by younger people
- d) Improve the publishing of information to promote the health benefits and opportunities to play bowls

**Tennis Courts**

- 3.112 Tennis courts are provided in a variety of settings, including schools, parks and both public and private sports grounds. They are provided for casual opportunities and formal competitive play. As with bowls, the demand for tennis is varied, ranging from facilities to accommodate formal league matches to casual games between friends and family.
- 3.113 The audit has identified a total of 12 sites providing tennis courts (either casual access or via club membership / formal hire) across Angus. The distribution of these courts is shown in Table 3.23. The Tennis courts are mapped in Map Picture 5L.

**Table 3.23 – Angus: Quantity of Tennis Courts**

Settlements	Place	Courts	Club
Arbroath	West Links	2 Tennis Courts	
	Arbriot Road	3 Blaes Tennis Courts	Arbroath Tennis Club
Brechin & Edzell	Brechin Leisure Centre	1 Floodlit Tennis Court	
Carnoustie	Carnoustie Leisure Centre	3 All weather Floodlit	
	Birkhill Park	1 Tennis court	
	11 Tennis Road	2 Tennis Courts	Maulesbank Tennis Club
Forfar	Lochside Leisure Centre	2 Floodlit Tennis courts	
	Dempster Park	2 Tennis Courts	Letham Tennis Club
Kirriemuir	Glebe Road	2 Blaes Tennis Courts	Kirriemuir Tennis Club

Settlements	Place	Courts	Club
Monifieth	Riverview	3 Tennis Courts	Monifieth Tennis Club
Montrose	Hillside	2 Tennis courts	
	Montrose Tennis Club	6 Tennis Courts floodlit	Montrose Tennis Club
<b>Total</b>	<b>12 sites</b>	<b>29 Tennis Courts</b> <b>12 floodlit</b>	<b>6 Tennis Clubs</b>

- 3.113 Table 3.23 clearly shows a variation in tennis court provision across Angus, Montrose and Carnoustie have the highest amount of tennis courts. All settlements have access to tennis courts.
- 3.114 Six tennis clubs have been identified.
- 3.115 All tennis clubs were sent a questionnaire. Four clubs replied, Arbroath, Kirriemuir, Montrose and Monifieth.
- 3.116 Three clubs stated they had over 100 members and one club stated they had 30 members.
- 3.117 All four clubs stated that they had room for new members.
- 3.118 Arbroath Tennis Club have stated their main problem is playing on blaes tennis courts and that their membership will decrease if they we do not get a resident coach in place. Until they get all weather courts it is proving difficult to attract a coach. The club is in discussion with the LTA.
- 3.119 Kirriemuir Tennis Club has stated that In order for the Club to develop it definitely needs to be an all year round concern with a suitable playing surface.
- 3.120 Montrose Tennis Club has undertaken a huge amount of upgrading of pavilion and courts facilities in the last four years. In 2013 three courts were upgraded to synthetic grass and floodlights were installed around the three courts.
- 3.121 Monifieth Tennis Club is a new club (formed in June 2012) and is looking to gain funding to resurface the courts and install floodlighting and also work alongside another local community group and the council to build a new community facility to incorporate changing facilities/club house for the tennis and bowling club.
- 3.122 There are two Angus Tennis Sites registered on All Play a national campaign provided by the Lawn Tennis Association these are Lochside and Kirriemuir Tennis Club. Neither site has any tennis players registered to play All Play.
- 3.123 The Angus Tennis Development Group was formed in 1994 to help promote tennis within Angus. It is run by representatives of Angus Clubs, coaches, Angus Council staff and others with an interest in promoting the sport.
- 3.124 The development group runs development squads with training indoors at Next Generation, Monifieth during the winter months.

3.125 The development group runs an annual Confined Tournament which takes place at Montrose Tennis Club during June. This event is open to any juniors who live in Angus or are members of Angus clubs or are members of clubs affiliated to the Angus Tennis Development Group. The development group also runs hoc club competitions and coach education sessions.

## Re commendations

3.126 The recommendations for tennis courts are:

- Retain the current provision of tennis courts and work with key partners, Scottish Tennis and the LTA and Angus clubs to maintain quality and improve access for potential new participants
- Ensure Angus Council owned public courts have appropriate fencing, quality nets and posts – all weather nets where appropriate, markings are clear and surfaces are clean and free of debris.
- Angus Council to support all tennis clubs in the development of club facilities and courts to increase participation and quality of facilities.

## Athletics

3.127 There are two main Athletic Clubs in Angus – Arbroath and District Athletics Club and Montrose and District Athletics Club. Map 5m Picture – Pitches Athletics Tracks only identifies one athletics facility.

3.128 The two main clubs have had to train on grass areas at their local sports centres and competitions take place at facilities outwith Angus, the nearest being in Dundee. Grass track facilities are provided at school facilities on a seasonal basis and vary greatly in terms of size and quality.

#

3.129 Both clubs completed a questionnaire;

#

3.130 **Montrose Athletics Club** have 74 members and expect this membership to remain the same. The club has no members with a disability. The key points from consultation include;

- The club currently has access to facilities at the Montrose Sports Centre and Montrose Academy campus. The facilities comprise of a grass running track an all weather jumps area a three straight and discus and hammer cage and shot putt circle. They also use an indoor hall for training. The club also trains at Aberdeen Sports Village where there is a full 400m all weather track and jump areas and indoor throwing area.
- Up to 20% of the membership comes from within a mile of Montrose. Between 30 and 40% are from outside the Angus area and between 40 and 50% are from over 1 mile away but within the Angus Council area.
- The club is accredited to Scottish Athletics Foundation Award and Angus Council Silver Award.
- Current issues for the club are, Cost of hiring facilities, Shortage of suitable indoor/outdoor training facilities, Shortage of suitable indoor/outdoor equipment, Lack of external grants, Shortage of volunteers

#

- A particular problem for the club is the poor maintenance and upkeep of existing facilities.

#

- The club has a sports development plan and would like to increase its membership and refurbish and expand its current facilities.

#

- The main current improvement the club would like to make is to have a proper equipment store.

3.131 **Arbroath and District Athletics Club** have a membership of 116 and expect the club to grow grow by 50 members. They train at the facilities at Arbroath Leisure Centre.

3.132 The key points from consultation include;

- The clubs main issue is the lack of appropriate local facilities.
- All the clubs competitions take place either at Card Park, Dundee or the U16 Seniors participate at Aberdeen.
- The majority of the clubs members come from Arbroath and Camoustie. The club uses Kaptie Road, Arbroath. The facilities include a 400m grass track, 2 long jump pits and a throwing cage.
- Summer training takes place on Tuesdays and Thursday evenings and Saturday mornings. Winter training takes place on the astro turf at Kaptie Road on Tuesday and Thursday evenings, the club also utilises the main hall at Kaptie for training on Tuesday and Thursday evenings and the gym hall at Kaptie on Tuesdays.
- The club rates the quality of the grass facilities as below average, the main hall and gym hall as good and the astro pitch as average.
- There are holes in the grass facilities due to rabbits and is waterlogged in areas when there has been heavy rain. There is no lighting so the facilities cannot be used in the winter months for training.
- The club considers that 10 miles is a reasonable distance to travel to their home track. The club would prefer to have access to facilities within close proximity to where the team comes from even if they are of a lower quality.
- The club has stated there are all weather full track and field facilities in Dundee and also straight in Montrose but it is too complicated and too costly for the club to travel there on a regular basis.

3.133 Montrose will now benefit from a new all-weather athletics training area next to the Montrose Sports Centre. The three lane all-weather, floodlit sprint/hurdle 'track' and pole vault and high/triple/long jump facilities have been built in an area of the existing playing fields, away from the main pitches. The new facility will be used by athletics clubs, schools, sports development and the local community as an alternative training area within the existing sports facilities.

3.134 There are a number of sports development initiatives in place in Angus such as festivals and school holiday athletics. A new development programme is currently being implemented. The Run, Jump and Throw Clubs initiative is a programme for children to gain an opportunity to participate in athletics activity all year round. Run, Jump and Throw Clubs are aimed at children who have taken part in an introductory athletics programme at school, in a holiday programme, or in a local/school competition and would like more input and activity before joining an affiliated Athletics Club.

3.135 The Run, Jump and Through Club will offer a wide range of athletic activity for children including all aspects of running, jumping and throwing. The children are put through their paces under the guidance of qualified athletics coaches.

3.136 The first club will run initially at Lochside Leisure Centre, Arbroath Sports Centre, and Carnoustie Leisure Centre following on Wednesday 21st October.

### **Recommendations**

3.137 The recommendations for athletics are:

- Work with both Arbroath and Montrose Athletics Clubs to develop athletics across Angus through sports development activities and facility development when needed to increase participation and quality of fit for purpose facilities.

3.138 Whilst a small training facility has been installed at Montrose Sports Centre (summer 2013), there is still a need to provide a facility that can cater for competition at a league and regional/sub national level and can be used as a training area throughout the year. In determining where such a facility should be built there are a number of pertinent points which need to be recognised.

- The new facility should be located in an area that is easily accessible and preferably where the land is currently owned by the council.
- Ideally, it should link in with other leisure facilities so that users can have the freedom to use facilities that are located in close proximity to each other and from a management perspective, keep capital and operating costs to a minimum.
- Adequate car/bus/cycle parking space needs to be available on site so that users and spectators from visiting teams can be accommodated. There should also be drop-off points near the facility for those arriving and leaving via public and private transport.
- Consideration should be given to accessibility in terms of public transport from within Angus as well as from further afield. It is envisaged that the provision of such a facility will attract users from other areas of Scotland if the facility can be used for competitions at local, club and national league level. Road and rail links are therefore important.
- Recognition should be given to the fact that the two most well established, longest running and successful track and field clubs are located in Montrose and Arbroath. Expertise is already in these areas with local volunteers already participating within these club set-ups as coaches, officials, fund raisers, child protection officers, etc. The clubs make use of the local council operated sports facilities.



## Appendix 1 - National FPM Analysis: Halls and Pools (Angus extract and summary)

A National Facilities Planning Model run was carried out in 2012 / 13 for Sports Halls and Swimming Pools.

The principles behind the FPM are described in the publication 'sportscotland – Facilities Planning Model' which is available on our website. In summary, it is a tool to provide an objective assessment of the likely demand for facilities. The demand comes from the population in the area and the model takes into account the distribution of it and its demographic structure. It should be noted that the National Analysis assesses the usage based on populations of 5km grid squares, whereas the local analysis considers 2km squares. This extract of the national analysis is therefore less reliable than a local analysis. Nonetheless the findings should be able to provide some useful information.

It should be stressed that the model does not predict actual usage of facilities, as this is determined by a wide range of factors such as management and programming. As the demand used is derived from national surveys, this will mask regional and local variations in participation levels. It is very useful to compare the patterns of use predicted by the FPM with actual throughput figures which could be completed to consider the accuracies and inaccuracies of the analysis.

For halls and Pools, the FPM models for attendance in the peak period – i.e. when centres are at their busiest. It includes for activity in the main halls, with the capacity figures being derived from survey work of usage patterns in sports centres.

The model uses a distance decay function in relation to how people travel to sports centres but notional times of 20 minutes are assumed for walkers and drivers. The model also includes for people travelling by bus.

The report below provides a brief summary of the national FPM outputs for Halls and Pools.

### Angus Halls

Angus has 25 Sports Halls in 10 sites at Schools and Sports Centres. Arbroath High School; Brechin High School; Brechin Leisure Centre; Carnoustie Leisure Centre; David Lloyd; Forfar Academy; Lochside Leisure Centre; Montrose Sports Centre; Saltire Leisure and Websters High School.

A total of 4 separate runs were carried out which considered the use of all Halls (including schools) and Halls (excluding schools). These scenarios were then considered at 40.5 hours per week and also against the actual opening hours.

To satisfy a population of 111920 the model suggests total demand to be 4787 visits during the peak hours per week. This requires the equivalent of approximately 30 badminton courts. Angus has an equivalent floor space of 62 badminton courts across all sites.

### Run1: All Halls open at 40.5 hours per week

In this scenario 90.2% of demand is satisfied. Of the remaining 9.1% of demand which is unmet, this is due to distribution of the population which results in residents being outwith the recognised catchment area.

Not all users of sports halls originate from within Angus. 86.7% of visits are from the Angus local authority. 13.3% of visits are from residents of adjoining local authorities.

Overall a total of 34% of total hall capacity is used leaving 66% of capacity unused.

The additional run which considered the actual opening hours had very marginal differences to Run 1.

### **Run2: All non schools at 40.5 hours per week**

In this scenario the number of sites reduces to from 10 to 7 containing 14 sports halls with an equivalent floor space of 40 badminton courts. In terms of capacity the number of badminton courts still provides over 10 courts more than is demanded. A total of 86.4% of demand is satisfied and 13.6% unmet.

Of the unmet demand 91.6% is due to users being outwith the catchment area. Only 8.4% is due to a lack of capacity which equates to approximately 54 visits during the peak hours per week. 86.6% of visits are from the Angus local authority. 13.4% of visits are from residents of adjoining local authorities.

Overall the analysis for Halls demonstrates, as in most other local authorities that there are ample sports halls to satisfy existing demand. Run 2 demonstrates that when the school estate is removed the level of satisfied demand drops slightly from 90.2% to 86.4%. Importantly there is an increase, if only marginal of unsatisfied demand due to capacity constraints. This leads to the conclusion that the school estate does provide much needed access to sports halls in areas not served by sports centres.

Again the additional run which considered actual opening hours had very similar results.

### **Angus Pools**

Angus has a total of 7 swimming pools which are all publicly available. Arbroath Sports Centre; Brechin High School; Carnoustie High School; Forfar Swimming Pool; Monifieth High School; Montrose Swimming Pool and Webster's Sports Centre.

A single run was completed nationally using the actual opening hours of each swimming pool. Again as this was a national run 5km grid squares rather than 2km grid squares were used therefore the result are not as accurate as a local analysis.

To satisfy the population a total of 7008 swims are demanded during the peak hours per week. This requires the equivalent of 1232m<sup>2</sup> of water space which includes a comfort factor to ensure pools are not restrictively busy. Angus has a total of 1000m<sup>2</sup> of water space therefore 100% of demand cannot be satisfied. Satisfied demand however is reasonably high at 89.5%.

Unmet demand is relatively low at 10.5% which is 739 visits. Only 8% of this total however is due to a lack of capacity which equates to 59 visits per week. As with Sports halls the unmet demand is primarily down to users residing out with the catchment area of the pools.

The model predicts that 77.4% of satisfied demand is from the Angus local authority and 22.6% of visits are from residents of adjoining local authorities.

The only two swimming pools which are considered to be operating at 100% capacity are Brechin High School and Carnoustie High School. Generally the model indicates that all pools in Angus are well used. On average 75% of capacity is utilised, against a national average of 45.1% which indicates the pools are well placed to serve the population. The analysis does not consider there to be enough unmet demand to warrant development of another pool but given the high usage rate the loss of any pools would likely have a significant impact.

**APPENDICES**

1 Demand Audit Table

**APPENDIX 1. ANGUS DEMAND TABLE FOOTBALL**

League	Mid-Week	Saturday AM	Saturday Pm	Sunday AM	Sunday PM		Female 16 - 45	Mens Adults 16 -45	Junior Boys 10 - 15	Junior Girls 10 15	Mini 6-9
SFA Eastern Regional North Division			1					1			
Midland Amateur Trident Trophys Div 2			1					1			
Dundee and District Youth Football League				1					1		
Dundee and District Youth Football League				1					1		
Dundee and District Youth Football League				1					1		
Dundee and District Youth Football League 7s				1							1
Dundee and District Youth Football League 7s				1							1
Dundee and District Youth Football League 7s				1					1		
Forfar and District Sunday League Premier Division				1				1			
	0	0	2	7	0		0	3	4	0	2
Forfar and District Sunday League Premier Div				1				1			
Midland Amateur Trident Trophys Div 2			1					1			
	0	0	1	1	0		0	2	0	0	0
Montrose Sunday District Welfare League				1				1			
Montrose Sunday District Welfare League				1				1			

U11s

1

Active Angus 2020 – Evidence Paper 3 – Assessment of need of Indoor and Outdoor Sports Facilities

League	Mid-Week	Saturday AM	Saturday Pm	Sunday AM	Sunday PM		Female 16 - 45	Mens Adults 16 -45	Junior Boys 10 - 15	Junior Girls 10 15	Mini 6-9	U11s
			1					1				
		1								1		
Dundee and District Youth Football League 7s				1								1
Dundee and District Youth Football League 7s				1								1
Dundee and District Youth Football League 7s				1					1			
Dundee and District Youth Football League				1					1			
Dundee and District Youth Football League				1					1			
Dundee and District Youth Football League				1					1			
Dundee and District Youth Football League				1				1				
	0	1	1	9	0		0	4	4	1	2	
Midland Amateur Trident Trophies Div 2			1					1				
Dundee and District Youth Football League				1					1			
	0	0	1	1	0		0	1	1	0	0	
Dundee and District Youth Football League 7s				1								1
Dundee and District Youth Football League 7s				1								1
Dundee and District Youth Football League 7s				1					1			
Dundee and District Youth Football League				1					1			
Dundee and District Youth Football League				1					1			
Dundee and District Youth Football League				1					1			

Active Angus 2020 – Evidence Paper 3 – Assessment of need of Indoor and Outdoor Sports Facilities

League	Mid-Week	Saturday AM	Saturday Pm	Sunday AM	Sunday PM		Female 16 - 45	Mens Adults 16 -45	Junior Boys 10 - 15	Junior Girls 10 15	Mini 6-9
Dundee and District Youth Football Legaue 7s				1							1
Dundee and District Youth Football Legaue 7s				1							1
Dundee and District Youth Football League 7s				1					1		
Dundee and District Youth Football League				1					1		
Dundee and District Youth Football League				1					1		
Dundee and District Youth Football League				1					1		
Dundee and District Youth Football League				1				1			
Dundee and District Youth Football League				1				1			
SFA Eastern Regional North Division			1					1			
SFA Eastern Regional North Division			1					1			
Midland Amateur Drain Doctor Div 1			1					1			
Midlands AFL			1					1			
Forfar and District Sunday League Premier Division				1				1			
Forfar and District Sunday League Premier Division				1				1			
SWPL Phase 1 and Phase 2		1					1				
SWFL League 1		1					1				
SWFL League 2 (East)		1					1				
SWFL SE and East U 17s League		1					1				
SWFL North U 15 league		1								1	
SWFL East U 13 Dundee and Angus		1								1	
		1								1	

U11s

1

Active Angus 2020 – Evidence Paper 3 – Assessment of need of Indoor and Outdoor Sports Facilities

League	Mid-Week	Saturday AM	Saturday Pm	Sunday AM	Sunday PM		Female 16 - 45	Mens Adults 16 -45	Junior Boys 10 - 15	Junior Girls 10 15	Mini 6-9
		1								1	
Under 19 Youth Division			1					1			
	0	8	5	16	0		4	9	8	4	4
Midland Amateur Trident Trophys Div 2			1					1			
Mildand Amateur A. M. Philip Div 2			1					1			
Midland Amateur Drain Doctor Div 1			1					1			
Midland Amateur A. M. Philip Div 1			1					1			
SWFL League 2 (East)		1					1				
SWF East 15s		1							1		
SWF East U13s Dundee and Angus		1							1		
Dundee and District Youth Football League				1					1		
Dundee and District Youth Football League				1					1		
Dundee and District Youth Football League				1					1		
Dundee and District Youth Football League				1				1			
Dundee and District Youth Football League				1				1			
Dundee and District Youth Football League 7s				1							1
Dundee and District Youth Football League 7s				1							1
Dundee and District Youth Football League 7s				1					1		
	0	3	4	8	0		1	6	6	0	2

U11s

1

Active Angus 2020 – Evidence Paper 3 – Assessment of need of Indoor and Outdoor Sports Facilities

League	Mid-Week	Saturday AM	Saturday Pm	Sunday AM	Sunday PM		Female 16 - 45	Mens Adults 16 -45	Junior Boys 10 - 15	Junior Girls 10 15	Mini 6-9
Midland Amateur Trident Trophys Div 2			1					1			
Midland Amateur A. M. Philip Div 2			1					1			
Midland Amateur George Bucklans Premier Div			1					1			
			1					1			
East Region Super League			1					1			
Forfar and District Sunday League Premier Division				1				1			
Forfar and District Sunday League				1				1			
Dundee and District Youth Football League 7s				1							1
Dundee and District Youth Football League 7s				1							1
Dundee and District Youth Football League 7s				1							1
Dundee and District Youth Football League				1					1		
Dundee and District Youth Football League				1					1		
Dundee and District Youth Football League				1					1		
Dundee and District Youth Football League				1				1			
	0	0	5	9	0		0	8	3	0	3
Midland Amateur Trident Trophy's Div 2			1					1			
	0	0	1	0	0		0	1	0	0	0
Forfar and District Sunday League				1				1			
SFA Eastern Regional North Division			1					1			

U11s

1

Active Angus 2020 – Evidence Paper 3 – Assessment of need of Indoor and Outdoor Sports Facilities

League	Mid-Week	Saturday AM	Saturday Pm	Sunday AM	Sunday PM		Female 16 - 45	Mens Adults 16 -45	Junior Boys 10 - 15	Junior Girls 10 15	Mini 6-9
Midlands Amateur George Buckland Premier Div			1					1			
Midlands Amateur A. M. Phillip Alliance Div 1			1					1			
Midlands Amateur A. M. Phillip Alliance Div 2			1					1			
Midlands Amateur Trident Trophy Div 2			1					1			
Midlands Amateur Trident Trophy Div 2			1					1			
Midland Amateur George Buckland Premier Div			1					1			
Midlands Amateur A. M. Phillip Alliance Div 1			1					1			
SWF		1								1	
Forfar and District Sunday League				1				1			
Dundee and District Youth Football League 7s				1					1		
Dundee and District Youth Football League				1					1		
Dundee and District Youth Football League				1					1		
Dundee and District Youth Football League				1					1		
Dundee and District Youth Football League				1				1			
Dundee and District Youth Football League				1				1			
Forfar and District Sunday League				1				1			
Forfar and District Sunday League Premier Div				1				1			
Forfar and District Sunday League Premier Div				1				1			
Dundee and District Youth Football League 7s				1							1

U11s

1



Active Angus 2020 – Evidence Paper 3 – Assessment of need of Indoor and Outdoor Sports Facilities

League	Mid-Week	Saturday AM	Saturday Pm	Sunday AM	Sunday PM		Female 16 - 45	Mens Adults 16 -45	Junior Boys 10 - 15	Junior Girls 10 15	Mini 6-9	U11s
Dundee and District Youth Football League 7s				1							1	
Dundee and District Youth Football League 7s				1					1			1
Dundee and District Youth Football League				1					1			
Dundee and District Youth Football League				1					1			
Dundee and District Youth Football League				1					1			
Dundee and District Youth Football League				1					1			
Dundee and District Youth Football League				1				1				
Dundee and District Youth Football League 7s				1							1	
Dundee and District Youth Football League 7s				1					1			1
Dundee and District Youth Football League				1					1			
Dundee and District Youth Football League				1				1				
SWF		1								1		
	0	2	8	23	0		0	17	11	2	3	
SFA Eastern Regional North Division			1					1				
Midland Amateur Drain Doctor Div 1			1					1				
Dundee and District Youth Football League 7s				1							1	
Dundee and District Youth Football League 7s				1							1	
Dundee and District Youth Football League 7s				1					1			1
Dundee and District Youth Football League				1					1			

Active Angus 2020 – Evidence Paper 3 – Assessment of need of Indoor and Outdoor Sports Facilities

League	Mid-Week	Saturday AM	Saturday Pm	Sunday AM	Sunday PM		Female 16 - 45	Mens Adults 16 -45	Junior Boys 10 - 15	Junior Girls 10 15	Mini 6-9	U11s
Dundee and District Youth Football League				1					1			
Dundee and District Youth Football League				1					1			
Dundee and District Youth Football League				1					1			
Dundee and District Youth Football League				1					1			
Dundee and District Youth Football League				1					1			
Dundee and District Youth Football League				1				1				
Montrose and District Welfare League				1				1				
Montrose and District Welfare League				1				1				
Montrose and District Welfare League				1				1				
Montrose and District Welfare League				1				1				
Montrose and District Welfare League				1				1				
Montrose and District Welfare League				1				1				
	0	0	2	16	0		0	9	7	0	2	
Forfar and District Sunday League				1				1				
	0	0	0	1	0		0	1	0	0	0	
<b>Totals</b>	<b>0</b>	<b>14</b>	<b>30</b>	<b>91</b>	<b>0</b>		<b>5</b>	<b>61</b>	<b>44</b>	<b>7</b>	<b>18</b>	<b>135</b>

135

Senior	
%	
Sat AM	8%
SAT PM	45%

Junior	
%	
Sat AM	14%
Sat PM	0%

66      51      117

**Active Angus 2020 – Evidence Paper 3 – Assessment of need of Indoor and Outdoor Sports Facilities**

Sun AM	47%
Sun PM	0%
Midweek	0%
	100%
Mini	
%	
Sat AM	0%
Sat PM	0%
Sun AM	100%
Sun PM	0%
Midweek	0%
	100%

Sun AM	86%
Sun PM	0%
Midweek	0%
	100%

Active Angus 2020 – Evidence Paper 3 – Assessment of need of Indoor and Outdoor Sports Facilities

Name of Club	Home Venue	Age	Gender	League	Mid-Week	Saturday	Sunday
Montrose Cricket Club	Union Park Montrose	1st X1	M	Strathmore and Perthshire Cricket Union Second Division			1
Montrose Cricket Club	Union Park Montrose	U 15s	M		1		
Montrose Cricket Club	Union Park Montrose	U13s	M		1		
Montrose Cricket Club	Union Park Montrose	U11s Kwik Crickat	M		1		
					3	0	1
Brechin Bucanners Junior Cricket Club	Guthrie Park Brechin	U18s	M				1
Brechin Bucanners Junior Cricket Club	Guthrie Park Brechin	U15s	M		1		
Brechin Bucanners Junior Cricket Club	Guthrie Park Brechin	U13s	M		1		
Brechin Bucanners Junior Cricket Club	Guthrie Park Brechin	U11s Kwik Cricket	M		1		
					3	0	1
Strathmore Cricket Club	Lochside Park DD8 1DU Graham Crescent	1st X1	M	Strathmore and perthshire Cricket Union Premier Division		1	
Strathmore Cricket Club	Lochside Park DD8 1DU Graham Crescent	2nd X1	M	Strathmore and perthshire Cricket Union Second Division			1
Strathmore Cricket Club	Lochside Park DD8 1DU Graham Crescent	Midweek X1	M	Freindlies played 11 games 2012 12 games 2011	1		
Strathmore Cricket Club	Lochside Park DD8 1DU Graham Crescent	U 15	M	SPCU Junior League	1		
Strathmore Cricket Club	Lochside Park DD8 1DU Graham Crescent	U 13	M	SPCU Junior League	1		
Strathmore Cricket Club	Lochside Park DD8 1DU Graham Crescent	U 12 Mini Hard Ball	M	SPCU Junior League	1		
Strathmore Cricket Club	Lochside Park DD8 1DU Graham Crescent	U11 Kwik Cricet	M	SPCU Junior League	1		
					5	1	1

Active Angus 2020 – Evidence Paper 3 – Assessment of need of Indoor and Outdoor Sports Facilities

Name of Club	Home Venue	Age	Gender	League	Mid-Week	Saturday	Sunday
Arbroath United Cricket Club	Lochlands	1st X1	M	Strathmore and Perthshire Cricket Union Premier Division		1	
Arbroath United Cricket Club	Lochlands	2nd X1	M	Strathmore and Perthshire Cricket Union Division 2		1	
Arbroath United Cricket Club		3rd X1	M				1
Arbroath United Cricket Club		U18	M		1		
Arbroath United Cricket Club		U15	M		1		
Arbroath United Cricket Club		U13	M		1		
Arbroath United Cricket Club		U12	M		1		
					4	2	1
					<b>15</b>	<b>3</b>	<b>4</b>

	Midweek	Sat	Sun	Total
<b>Adult</b>	2	3	4	9
<b>Junior Boys</b>	13	0	0	13
<b>Total</b>	15	3	4	22
<b>%</b>	<b>Adults</b>	<b>Juniors</b>		
<b>Midweek</b>	22%	100.0%		
<b>Sat PM</b>	33%	0.0%		
<b>Sun PM</b>	44%	0.0%		
	100.0%	100.0%		

Active Angus 2020 – Evidence Paper 3 – Assessment of need of Indoor and Outdoor Sports Facilities

Name of Club	Home Venue	Age	Gender	League	Mid-Week	Saturday	Sunday
Brechin Thistle Hockey Club	Arbroath Sports Centre Outdoor Pitch and Brechin leisure centre indoor	1 ST Team		Midland Hockey Union Womens Division 1			
<b>Monarchs Hockey Club</b>	<b>Dundee</b>	<b>1st Team</b>		<b>National League 3</b>			
Monarchs Hockey Club	Dawson Park	2nd Team		Midland Hockey Union mens Division 1			
Monarchs Hockey Club	Arbroath Sports Centre	3rds		Midland Hockey Union mens Division 2			

<b>Junior hockey – boys</b>	<b>11-15yrs</b>	<b>2</b>
<b>Junior hockey – girls</b>	<b>11-15yrs</b>	<b>2</b>
<b>Men’s hockey</b>	<b>16-45yrs</b>	<b>10</b>
<b>Women’s hockey</b>	<b>16-45yrs</b>	<b>2</b>
<b>Total</b>		<b>16</b>

Senior	
%	
Sat AM	37.5%
SAT PM	37.5%
Sun AM	0%
Sun PM	0%
Midweek	25%
	100%

Junior	
%	
Sat AM	0.0%
SAT PM	0.0%
Sun AM	50%
Sun PM	50%
Midweek	0%
	100%

Active Angus 2020 – Evidence Paper 3 – Assessment of need of Indoor and Outdoor Sports Facilities

Town	Name of Club	Home Venue	Age	Gender	League	Mid-Week	Saturday	Sunday
<b>Brechin</b>								
	Brechin Junior Rugby Club (Pirates)	Guthrie Park	U15s	m				1
	Brechin Junior Rugby Club (Pirates)	Guthrie Park	S1/2	m				1
	Brechin Junior Rugby Club (Pirates)	Guthrie Park	P6/7 mini	m				1
	Brechin Junior Rugby Club (Pirates)	Guthrie Park	P4/5 mini	m				1
	Brechin Junior Rugby Club (Pirates)	Guthrie Park	Micro	m				1
<b>Forfar</b>								
	Strathmore RFU	Inchmacoble Park DD8 1 RL	1st XV	m	RBS Caledonian Regional League Division 1		1	
	Strathmore RFU	Inchmacoble Park DD8 1 RL	2nd XV	m	RBS Caledonian Division 4 Midlands		1	
	Strathmore RFU (Gryphons)	Inchmacoble Park DD8 1 RL	Over 35	m			1	
	Strathmore RFU Youth	Inchmacoble Park DD8 1 RL	Under 18s	m	Midland Division 1			1
	Strathmore RFU Youth	Inchmacoble Park DD8 1 RL	Under 16s	m				1
	Strathmore Sharks	Inchmacoble Park DD8 1 RL	S1/2	m				1
	Strathmore Sharks	Inchmacoble Park DD8 1 RL	P6/7 mini	m				1
	Strathmore Sharks	Inchmacoble Park DD8 1 RL	P4/5 mini	m				1
	Strathmore Micros	Inchmacoble Park DD8 1 RL	Micro	m				1
<b>Carnoustie</b>								
	Carnoustie HSFP Rugby Club	Links Parade Carnoustie	1st 15	m	RBS Caledonian Regional Midlands Div 3		1	
	Carnoustie HSFP Rugby Club		Ladies	w				1
	Carnoustie HSFP Rugby Club		Micros	m				1
	Carnoustie HSFP Rugby Club		S1/2	m				1
	Carnoustie HSFP Rugby Club		U 16	m				1
	Carnoustie HSFP Rugby Club		P6/7 mini	m				1
	Carnoustie HSFP Rugby Club		P4/5 mini	m				1

Active Angus 2020 – Evidence Paper 3 – Assessment of need of Indoor and Outdoor Sports Facilities

Town	Name of Club	Home Venue	Age	Gender	League	Mid-Week	Saturday	Sunday
<b>Arbroath</b>								
	<b>Arbroath Rugby Club</b>		1st 15	m	RBS Caledonian Division 4 Midlands			
	<b>Train at RM Condor during season</b>		U12	m				
	<b>Arbroath Rhinos</b>		U10 mini	m				
<b>Montrose</b>	Montrose Cricket and Rugby Club	Union Park	1 ST 15	M	RBS Caledonian Division 3 Midlands East			
	Montrose Ladies	Union Park	1 ST 15	W				
	Montrose Cricket and Rugby Club	Union Park	U18	m				
	Montrose Cricket and Rugby Club	Union Park	U16/15	m				
	Montrose Cricket and Rugby Club	Union Park	S1/2	m				
	Montrose Cricket and Rugby Club	Union Park	P6/7 mini	m				
	Montrose Cricket and Rugby Club	Union Park	P4/5 mini	m				
	Montrose Cricket and Rugby Club	Union Park	P1/3 mini	m				



2 Supply Audit Table

Site	Town	Ownership	Nr of 11 - a - side football pitches	Nr of 7 - a - side football pitches	Nr of cricket pitches	No of Rugby Union	Artificial Turf Pitches	Athletics Tracks	Notes
Victoria Park	Arbroath	Local Council	3	2	0	1	0	0	
Arbroath High School / Arbroath Leisure Centre	Arbroath	Local Council	2	3	0	1	1	1	ATP Sand Based 11 -a - side
Lochlands Park Keptie Road	Arbroath	Club	0	0	1	0	0	0	
Ogilvy Park	Arbroath	Club	1	0	0	0	0	0	
Hercules Den	Arbroath	Leased to Local Club	3	4	0	0	0	0	
McDonald Park	Arbroath	Leased to Local Club	1	0	0	0	0	0	
Cliffburn Park	Arbroath	Local Council	1	0	0	0	0	0	
Cairnie Park	Arbroath	Local Council	1	0	0	0	0	0	
Arbroath Academy	Arbroath	Local Council	2	2	0	0	0	0	
Inverbrothock Primary School	Arbroath	Education	0	2	0	0	0	0	
Hayshead School	Arbroath	Education	0	2	0	0	0	0	
St Thomas School	Arbroath	Education	0	1	0	0	0	0	
Ladyloan School	Arbroath	Education	0	1	0	0	0	0	
Muirfield School	Arbroath	Education	0	1	0	0	0	0	
Carmyllie Park	Arbroath	Local Council	1	0	0	0	0	0	
Timbergreens School	Arbroath	Education	0	1	0	0	0	0	
			<b>15</b>	<b>19</b>	<b>1</b>	<b>2</b>	<b>1</b>	<b>1</b>	
Aucterhouse Park	Aucterhouse	Local Council	1	0	0	0	0	0	
			<b>1</b>	<b>0</b>	<b>0</b>	<b>0</b>	<b>0</b>	<b>0</b>	
Birkhill Park	Birkhill	Local Council	1	1	0	0	0	0	
			<b>1</b>	<b>1</b>	<b>0</b>	<b>0</b>	<b>0</b>	<b>0</b>	
Brechin High School	Brechin	Local Council	2	2	1	1	0	0	
Brechin Public Park	Brechin	Local Council	2	1	0	0	0	0	

Active Angus 2020 – Evidence Paper 3 – Assessment of need of Indoor and Outdoor Sports Facilities

Site	Town	Ownership	Nr of 11 - a - side football pitches	Nr of 7 - a - side football pitches	Nr of cricket pitches	No of Rugby Union	Artificial Turf Pitches	Athletics Tracks	Notes
Wards Park	Brechin	Local Council	1	0	0	0	0	0	
Brechin Leisure Centre	Brechin	Local Council	0	0	0	0	0	0	ATP 3G 5 - a - side
Andover Primary School	Brechin	Education	0	1	0	0	0	0	
Inch Park	Brechin	Local Council	0	1	0	0	0	0	
The Matrix Eastmill Road - Brechin City U9s	Brechin	Private	0	1	0	0	0	0	
Guthrie Park	Brechin	Leased to Local Club	0	0	0	0	1	0	
Victoria Park	Brechin	Club	1	0	0	0	0	0	
			6	6	1	1	1	0	
Carlogie Park	Carnoustie	Leased to Local Club	2	0	0	0	0	0	
Pitskelly Park	Carnoustie	Leased to Local Club	0	2	0	0	0	0	
House Grounds	Carnoustie	Local Council	1	2	0	0	0	0	
Links Parade	Carnoustie	Local Council	0	0	0	2	0	0	
			3	4	0	2	0	0	
Edzell Muir	Edzell	Local Council	1	0	0	0	0	0	
Edzel Primary School	Edzell	Education	0	1	0	0	0	0	
Inglis Court Edzell	Edzell	Local Council	0	1	0	0	0	0	
			1	2	0	0	0	0	
Lochside Leisure Centre Country Park	Forfar	Local Council	1	0	1	0	0	0	
Market Muir	Forfar	Leased to Local Club	1	0	0	0	0	0	
Lower Steele Park	Forfar	Local Council	1	0	0	0	0	0	
Whitehills	Forfar	Local Council	0	2	0	0	0	0	
Forfar Academy	Forfar	Education	1	2	0	0	0	0	
Graham Crescent	Forfar	Club	0	1	1	0	0	0	
Inverarity Primary School	Forfar	Education	0	0	0	0	0	0	5 - a side
Tannadice Primary School	Forfar	Education	0	1	0	0	0	0	

Active Angus 2020 – Evidence Paper 3 – Assessment of need of Indoor and Outdoor Sports Facilities

Site	Town	Ownership	Nr of 11 - a - side football pitches	Nr of 7 - a - side football pitches	Nr of cricket pitches	No of Rugby Union	Artificial Turf Pitches	Athletics Tracks	Notes
Station Park	Forfar	Local Council	1	0	0	0	1	0	ATP 3G 11-a-side
Guthrie Park	Forfar	Leased to Local Club	1	0	0	0	0	0	
Inchmacoble Park	Forfar	Club	0	0	0	3	0	0	
			6	6	2	3	1	0	
Monikie Primary School	Monikie	Education	0	1	0	0	0	0	
			0	1	0	0	0	0	
Murroes Primary School	Duntrone	Education	0	1	0	0	0	0	
			0	1	0	0	0	0	
Friockheim Park	Friockheim	Local Council	1	1	0	0	0	0	
			1	1	0	0	0	0	
Tealing - Inveraldie Park	Inveraldie	Local Council	0	1	0	0	0	0	
			0	1	0	0	0	0	
Kingsmuir Park	Kingsmuir	Local Council	1	0	0	0	0	0	
			1	0	0	0	0	0	
Martin Park	Kirremuir	Local Council	2	2	0	0	0	0	
Webster Sports Centre Centre	Kirremuir	Local Council	0	0	0	0	1	0	ATP 3 G 7-a-side
			2	2	0	0	1	0	
Dempstar Park	Letham	Local Council	1	0	0	0	0	0	
			1	0	0	0	0	0	
Riverview	Monifeith	Leased to Local Club	2	4	0	0	0	0	
Monifeith High School	Monifeith	Education	2	0	0	1	0	0	
			4	4	0	1	0	0	
Borrowfield	Montrose	Local Council	0	1	0	0	0	0	
Ferryden - King George	Montrose	Local Council	0	1	0	0	0	0	
Hillside	Montrose	Local Council	1	0	0	0	0	0	
Broomfield Park	Montrose	Leased to Local Club	2	2	1	0	0	0	

Active Angus 2020 – Evidence Paper 3 – Assessment of need of Indoor and Outdoor Sports Facilities

Site	Town	Ownership	Nr of 11 - a - side football pitches	Nr of 7 - a - side football pitches	Nr of cricket pitches	No of Rugby Union	Artificial Turf Pitches	Athletics Tracks	Notes
Broomfield Park	Montrose	Local Council	3	2	0	0	0	0	
Wellington Street	Montrose	Montrose FC	0	0	0	0	1	0	ATP 3 G 11-a-side
Inverkeilor Park	Montrose	Local Council	0	1	0	0	0	0	
Montrose Sports Centre	Montrose	Local Council	1	0	0	0	0	0	
Rosemount Primary School	Montrose	Education	0	0	0	0	0	0	2 x 5 - a - side
East Links Park	Montrose	Leased to Local Club	0	0	0	1	0	0	
Montrose Academy	Montrose	Education	1	0	0	0	0	0	
Union Park	Montrose	Leased to Local Club	0	0	0	2	0	0	
			8	7	1	3	1	0	
Newtyle Park	Newtyle	Local Council	1	0	0	0	0	0	
			1	0	0	0	0	0	
Newbigging Park	Newbigging	Local Council	0	1	0	0	0	0	
			0	1	0	0	0	0	
Padanaram	Padanaram	Local Council	2	0	0	0	0	0	
			2	0	0	0	0	0	
Wellbank Park	Wellbank	Leased to Local Club	1	0	0	0	0	0	
			1	0	0	0	0	0	
<b>Total Playing Pitches</b>	<b>66</b>	<b>133</b>	<b>54</b>	<b>56</b>	<b>5</b>	<b>12</b>	<b>5</b>	<b>1</b>	

3 PPM Model Analysis

Active Participation

Task 1 - Population Totals within Active Age Groups

Active Age Group	Sport	Male	Female	Mixed
0-5 years	Non active			7240
				0
6-9 years	Football			3662
8-12 years				4793
10-15 years		3130	2896	
11-15 years		2514	2299	
11-17 years		3894	3588	
13-17 years	Rugby	2687	2440	
16-17 years	Rugby		666	
16-45 years	F'ball/Hockey	17677	17544	
18-45 years	Rugby	16316	16238	
18-55 years	Cricket	24542	25129	
Over 55 years	Non active			39990
				0

<b>Total area population within Active Age Groups (6-55yrs)</b>	64537
---	-------

<b>Total area population</b>	111767
------------------------------	--------

Task 2 - Total number of Teams within Area

Active Angus 2020 – Evidence Paper 3 – Assessment of need of Indoor and Outdoor Sports Facilities

	Age Group	Number of Teams
<b>Football:</b>		
Mini-soccer (U7-U10s) - mixed	6-9yrs	18
Junior football - boys	10-15yrs	44
Junior football - girls	10-15yrs	7
Men's football	16-45yrs	61
Women's football	16-45yrs	5
Totals for football (exc mini)		117
<b>Cricket:</b>		
Junior cricket - boys	11-17yrs	13
Junior cricket - girls	11-17yrs	0
Men's cricket	18-55yrs	9
Women's cricket	18-55yrs	0
Totals for Cricket		22
<b>Hockey:</b>		
Junior hockey – boys	11-15yrs	0
Junior hockey – girls	11-15yrs	0
Men's hockey	16-45yrs	3
Women's hockey	16-45yrs	1
Totals for Hockey		4
<b>Rugby Union:</b>		
Mini-rugby - mixed	8-12yrs	13
Junior rugby - boys	13-17yrs	11
Junior rugby - girls	16-17yrs	0
Men's rugby	18-45yrs	7
Women's rugby	18-45yrs	1
Totals for Rugby (ex mini)		19

## Active Angus 2020 – Evidence Paper 3 – Assessment of need of Indoor and Outdoor Sports Facilities

<b>Rugby League:</b>			
Junior rugby - boys	13-17yrs		0
Junior rugby - girls	13-17yrs		0
Men's rugby	18-45yrs		0
Women's rugby	18-45yrs		0
Totals for Rugby			0

### Task 3 - Ratio of home games and temporal demand

	Football			Cricket		Rugby League		Rugby Union	
	Senior	Junior	Mini	Senior	Junior	Senior	Junior	Senior	Junior
Ratio of home games	0.5	0.5	0.5	0.5	0.5	0.5	0.5	0.5	0.5
Temporal Use %									
Saturday AM	8%	14%	0%	0%	0%	0%	0%	0%	0%
Saturday PM	45%	0%	0%	33%	0%	0%	0%	100%	0%
Sunday AM	47%	86%	100%	0%	0%	0%	0%	0%	100%
Sunday PM	0%	0%	0%	44%	0%	0%	0%	0%	0%
Mid week 1- Specify day	0%	0%	0%	22%	50%	0%	0%	0%	0%
Mid week 2- Specify day	0%	0%	0%	0%	50%	0%	0%	0%	0%

### Task 4

#### Assumptions for the Future PPM calculations

Impact of sports development	Percentage increase
Football	1%
Mini soccer	1%
Cricket	1%
Rugby League	1%
Rugby Union	1%
Hockey	1%

### Task 5

#### Future adult / junior team ratio

Future adult / junior team ratio	Percentage of adult teams	Percentage of junior teams
Football	56%	44%
Cricket	41%	59%
Rugby League	0%	0%
Rugby Union	42%	58%
Hockey	100%	0%

**Active Angus 2020 – Evidence Paper 3 – Assessment of need of Indoor and Outdoor Sports Facilities**

**District Population**

District Wide	Total Future Active Population (6-55yrs) 2020	Football								Rugby League				Rugby Union				Cricket			Hockey		
		Seniors		Junior		Minis				Seniors		Junior		Seniors		Junior		Seniors		Junior	Seniors		Junior
		No of teams	No of pitches	No of teams	No of pitches	No of teams	Equiv teams	No of pitches	Equiv pitches	No of teams	No of pitches	No of teams	No of pitches	No of teams	No of pitches	No of teams	No of pitches	No of teams	No of pitches	No of teams	No of teams	No of pitches	No of teams
Angus	61390	107	54	0	0	28	0	41	0	0	0	0	0	8	12	11	0	9	4	13	3	1	0
<b>Total</b>	<b>61390</b>	<b>107</b>	<b>54</b>	<b>0</b>	<b>0</b>	<b>28</b>	<b>0</b>	<b>41</b>	<b>0</b>	<b>0</b>	<b>0</b>	<b>0</b>	<b>0</b>	<b>8</b>	<b>12</b>	<b>11</b>	<b>0</b>	<b>9</b>	<b>4</b>	<b>13</b>	<b>3</b>	<b>1</b>	<b>0</b>



## Active Angus 2020 – Evidence Paper 3 – Assessment of need of Indoor and Outdoor Sports Facilities

Team Generation Rate - Calculator						
	Age Groups	Pop'tion within Age group	Age group as a % of total active pop'tion	Number of Teams within age group	Teams generated per 1000 pop	TGR = Pop in age group needed to generate 1 team
<b>Football:</b>						
Mini-soccer (U7-U10s) - mixed	6-9yrs	3662	5.7%	18	4.9	203
Junior football - boys	10-15yrs	3130	4.8%	44	14.1	71
Junior football - girls	10-15yrs	2896	4.5%	7	2.4	414
Men's football	16-45yrs	17677	27.4%	61	3.5	290
Women's football	16-45yrs	17544	27.2%	5	0.3	3509
<b>Totals for football (excluding mini)</b>		<b>41247</b>	<b>63.9%</b>	<b>117</b>	<b>2.8</b>	<b>353</b>
<b>Cricket:</b>						
Junior cricket - boys	11-17yrs	3894	6.0%	13	3.3	300
Junior cricket - girls	11-17yrs	3588	5.6%	0	#DIV/0!	#DIV/0!
Men's cricket	18-55yrs	24542	38.0%	9	0.4	2727
Women's cricket	18-55yrs	25129	38.9%	0	#DIV/0!	#DIV/0!
<b>Totals for Cricket</b>		<b>57153</b>	<b>88.6%</b>	<b>22</b>	<b>0.4</b>	<b>2598</b>
<b>Hockey:</b>						
Junior hockey – boys	11-15yrs	2514	3.9%	0	#DIV/0!	#DIV/0!
Junior hockey – girls	11-15yrs	2299	3.6%	0	#DIV/0!	#DIV/0!
Men's hockey	16-45yrs	17677	27.4%	3	0.2	5892
Women's hockey	16-45yrs	17544	27.2%	1	0.1	17544
<b>Totals for Hockey</b>		<b>40034</b>	<b>62.0%</b>	<b>4</b>	<b>0.1</b>	<b>10009</b>
<b>Rugby Union:</b>						
Mini-rugby - mixed	8-12yrs	4793	7.4%	13	2.7	369
Junior rugby - boys	13-17yrs	2687	4.2%	11	4.1	244
Junior rugby - girls	16-17yrs	666	1.0%	0	#DIV/0!	#DIV/0!
Men's rugby	18-45yrs	16316	25.3%	7	0.4	2331
Women's rugby	18-45yrs	16238	25.2%	1	0.1	16238
<b>Totals for Rugby (ex mini)</b>		<b>35907</b>	<b>55.6%</b>	<b>19</b>	<b>0.5</b>	<b>1890</b>
<b>Rugby League:</b>						
Junior rugby - boys	13-17yrs	2687	4.2%	0	#DIV/0!	#DIV/0!
Junior rugby - girls	13-17yrs	2440	3.8%	0	#DIV/0!	#DIV/0!
Men's rugby	18-45yrs	16316	25.3%	0	#DIV/0!	#DIV/0!
Women's rugby	18-45yrs	16238	25.2%	0	#DIV/0!	#DIV/0!
<b>Totals for Rugby</b>		<b>37681</b>	<b>58.4%</b>	<b>0</b>	<b>#DIV/0!</b>	<b>#DIV/0!</b>
<b>All sports</b>						
		<b>64537</b>	<b>100%</b>	<b>162</b>	<b>2.5</b>	<b>398</b>

Active Angus 2020 – Evidence Paper 3 – Assessment of need of Indoor and Outdoor Sports Facilities

4. Quality Audits (Summary)

Sheet Name	Pitch Number	Site Name	Total Score	Pitch Rating	OVERALL QUALITY	EVIDENCE OF VANDALISM	SHOWERS	TOILETS	PARKING	LINKS TO PUBLIC TRANSPORT	SECURITY	SEGREGATED CHANGING	Total Score	Changing Rating
P1	0	Dempster Park - Letham	63%	Average	Poor	None	Yes, Poor Quality	Yes, Poor Quality	OK	Poor / Non	Good	Yes	51%	Average
P2	NO 1 X 7 ASIDE FOOTBALL PITCH	HAYSHEAD SCHOOL	57%	Average	Very Good	None	Yes, Good Quality	Yes, OK Quality	OK	Good	Good	Yes	88%	Good
P3	NO 2 X 7 ASIDE FOOTBALL PITCH	HAYSHEAD SCHOOL	60%	Average	Very Good	None	Yes, Good Quality	Yes, OK Quality	OK	Good	Good	Yes	88%	Good
P4	NO 3 - 7 ASIDE FOOTBALL PITCH	HERCULES DEN	65%	Good	No Changing	Yes - Lots	No Showers	No Showers	Poor	Poor / Non	Poor	No	0%	Very Poor
P5	NO 7 - 7 ASIDE FOOTBALL PITCH	HERCULES DEN	68%	Good	No Changing	Yes - Lots	No Showers	No Showers	Poor	Poor / Non	Poor	No	0%	Very Poor
P6	NO 6 - 7 ASIDE FOOTBALL PITCH	HERCULES DEN	68%	Good	No Changing	Yes - Lots	No Showers	No Showers	Poor	Poor / Non	Poor	No	0%	Very Poor
P7	NO 5 - 11 ASIDE FOOTBALL PITCH	HERCULES DEN	72%	Good	No Changing	Yes - Lots	No Showers	No Showers	Poor	Poor / Non	Poor	No	0%	Very Poor
P8	NO 4 - 7 ASIDE FOOTBALL PITCH	HERCULES DEN	67%	Good	No Changing	Yes - Lots	No Showers	No Showers	Poor	Poor / Non	Poor	No	0%	Very Poor
P9	NO 1 X 7 ASIDE FOOTBALL PITCH	ST.THOMAS SCHOOL	65%	Good	No Changing	None	No Showers	Yes, Poor Quality	OK	Good	OK	No	37%	Poor

Active Angus 2020 – Evidence Paper 3 – Assessment of need of Indoor and Outdoor Sports Facilities

Sheet Name	Pitch Number	Site Name	Total Score	Pitch Rating	OVERALL QUALITY	EVIDENCE OF VANDALISM	SHOWERS	TOILETS	PARKING	LINKS TO PUBLIC TRANSPORT	SECURITY	SEGREGATED CHANGING	Total Score	Changing Rating
P10	NO 1 X 7 ASIDE FOOTBALL PITCH	TIMMERGREENS SCHOOL	60%	Average	Poor	None	No Showers	Yes, OK Quality	OK	Good	OK	Yes	59%	Average
P11	NO 1 RUGBY PITCH	ARBROATH HIGH SCHOOL	72%	Good	No Changing	Yes - Lots	No Showers	No Showers	Poor	Poor / Non	Poor	No	0%	Very Poor
P12	NO 1 x 11 ASIDE FOOTBALL PITCH	CLIFFBURN PARK FOOTBALL PITCH	0%	Poor	No Changing	Yes - Lots	No Showers	No Showers	Poor	Poor / Non	Poor	No	0%	Very Poor
P13	NO 2 x 11 ASIDE FOOTBALL PITCH	ARBROATH HIGH SCHOOL	72%	Good	No Changing	Yes - Lots	No Showers	No Showers	Poor	Poor / Non	Poor	No	0%	Very Poor
P14	HOCKEY PITCH	ARBROATH ACADEMY	68%	Good	No Changing	Yes - Lots	No Showers	No Showers	Poor	Poor / Non	Poor	No	0%	Very Poor
P15	NO 2 X 11 ASIDE FOOTBALL PITCH	ARBROATH ACADEMY	70%	Good	No Changing	Yes - Lots	No Showers	No Showers	Poor	Poor / Non	Poor	No	0%	Very Poor
P16	NO 1 X 11 ASIDE FOOTBALL PITCH	ARBROATH ACADEMY	70%	Good	No Changing	Yes - Lots	No Showers	No Showers	Poor	Poor / Non	Poor	No	0%	Very Poor
P17	NO 2 X 7 ASIDE FOOTBALL PITCH	ARBROATH ACADEMY	67%	Good	No Changing	Yes - Lots	No Showers	No Showers	Poor	Poor / Non	Poor	No	0%	Very Poor
P18	NO 1 X 7 ASIDE FOOTBALL PITCH	ARBROATH ACADEMY	67%	Good	No Changing	Yes - Lots	No Showers	No Showers	Poor	Poor / Non	Poor	No	0%	Very Poor
P19	NO 3 X 7 ASIDE FOOTBALL PITCH	ARBROATH HIGH SCHOOL	73%	Good	No Changing	Yes - Lots	No Showers	No Showers	Poor	Poor / Non	Poor	No	0%	Very Poor

Active Angus 2020 – Evidence Paper 3 – Assessment of need of Indoor and Outdoor Sports Facilities

Sheet Name	Pitch Number	Site Name	Total Score	Pitch Rating	OVERALL QUALITY	EVIDENCE OF VANDALISM	SHOWERS	TOILETS	PARKING	LINKS TO PUBLIC TRANSPORT	SECURITY	SEGREGATED CHANGING	Total Score	Changing Rating
P20	NO 2 X 7 ASIDE FOOTBALL PITCH	ARBROATH HIGH SCHOOL	73%	Good	No Changing	Yes - Lots	No Showers	No Showers	Poor	Poor / Non	Poor	No	0%	Very Poor
P21	NO 1 X 7 ASIDE FOOTBALL PITCH	ARBROATH HIGH SCHOOL	77%	Good	No Changing	Yes - Lots	No Showers	No Showers	Poor	Poor / Non	Poor	No	0%	Very Poor
P22	NO1 x 11 ASIDE FOOTBALL PITCH	ARBROATH HIGH SCHOOL	73%	Good	No Changing	Yes - Lots	No Showers	No Showers	Poor	Poor / Non	Poor	No	0%	Very Poor
P23	NO 1 x 11 ASIDE FOOTBALL PITCH	FRIOCKHEIM PARK FOOTBALL PITCH	60%	Average	No Changing	Yes - Lots	No Showers	No Showers	Poor	Poor / Non	Poor	No	0%	Very Poor
P24	NO 2 - 11 ASIDE FOOTBALL PITCH	HERCULES DEN	70%	Good	No Changing	Yes - Lots	No Showers	No Showers	Poor	Poor / Non	Poor	No	0%	Very Poor
P25	NO 1 - 11 ASIDE FOOTBALL PITCH	HERCULES DEN	70%	Good	No Changing	Yes - Lots	No Showers	No Showers	Poor	Poor / Non	Poor	No	0%	Very Poor
P26	NO 2 - 7 ASIDE PITCH	INVERBROTHOCK SCHOOL	75%	Good	Poor	None	No Showers	Yes, OK Quality	Poor	OK	OK	Yes	46%	Average
P27	NO 2 - 7 ASIDE PITCH	INVERBROTHOCK SCHOOL	75%	Good	Poor	None	No Showers	Yes, OK Quality	Poor	OK	OK	Yes	46%	Average
P28	NO 1 - 7 ASIDE PITCH	INVERBROTHOCK SCHOOL	73%	Good	Poor	None	No Showers	Yes, OK Quality	Poor	OK	OK	Yes	46%	Average
P29	NO 1 X 7 ASIDE FOOTBALL PITCH	LADYLOAN SCHOOL	63%	Average	Poor	None	No Showers	Yes, OK Quality	Poor	Good	Good	No	54%	Average
P30	1	McDONALD PARK FOOTBALL PITCH	72%	Good	No Changing	Yes - Lots	No Showers	No Showers	Poor	Poor / Non	Poor	No	0%	Very Poor

### Active Angus 2020 – Evidence Paper 3 – Assessment of need of Indoor and Outdoor Sports Facilities

Sheet Name	Pitch Number	Site Name	Total Score	Pitch Rating	OVERALL QUALITY	EVIDENCE OF VANDALISM	SHOWERS	TOILETS	PARKING	LINKS TO PUBLIC TRANSPORT	SECURITY	SEGREGATED CHANGING	Total Score	Changing Rating
P31	1	McDONALD PARK FOOTBALL PITCH	72%	Good	No Changing	Yes - Lots	No Showers	No Showers	Poor	Poor / Non	Poor	No	0%	Very Poor
P32	NO 1 X 7 ASIDE FOOTBALL PITCH	MUIRFIELD SCHOOL	65%	Good	Poor	None	No Showers	Yes, Poor Quality	Good	OK	Good	No	49%	Average
P33	NO 1 - 7 ASIDE PITCH	VICTORIA PARK FOOTBALL PITCH	0%	Poor	No Changing	Yes - Lots	No Showers	No Showers	Poor	Poor / Non	Poor	No	0%	Very Poor
P34	NO 3 - 11 ASIDE PITCH	VICTORIA PARK FOOTBALL PITCH	67%	Good	No Changing	Yes - Lots	No Showers	No Showers	Poor	Poor / Non	Poor	No	0%	Very Poor
P35	NO 4 - 11 ASIDE PITCH	VICTORIA PARK FOOTBALL PITCH	67%	Good	No Changing	Yes - Lots	No Showers	No Showers	Poor	Poor / Non	Poor	No	0%	Very Poor
P36	NO 3 - 11 ASIDE PITCH	VICTORIA PARK FOOTBALL PITCH	67%	Good	No Changing	Yes - Lots	No Showers	No Showers	Poor	Poor / Non	Poor	No	0%	Very Poor
P38	NO 1 - 7 ASIDE PITCH	VICTORIA PARK FOOTBALL PITCH	67%	Good	No Changing	Yes - Lots	No Showers	No Showers	Poor	Poor / Non	Poor	No	0%	Very Poor
P39	1	Inverkeilor Park	65%	Good	No Changing	Yes - Lots	No Showers	No Showers	Poor	Poor / Non	Poor	No	0%	Very Poor
P40	1	King Georges Park, Ferryden	65%	Good	No Changing	Yes - Lots	No Showers	No Showers	Poor	Poor / Non	Poor	No	0%	Very Poor
P41	2	Montrose Academy Playing Fields	70%	Good	No Changing	Yes - Lots	No Showers	No Showers	Poor	Poor / Non	Poor	No	0%	Very Poor
P42	1	Montrose Academy Playing Fields	72%	Good	No Changing	Yes - Lots	No Showers	No Showers	Poor	Poor / Non	Poor	No	0%	Very Poor
P43	1	East Links Park, Montrose	67%	Good	No Changing	Yes - Lots	No Showers	No Showers	Poor	Poor / Non	Poor	No	0%	Very Poor
P44	5	Broomfield Park Leased Pitches, Montrose	65%	Good	No Changing	Yes - Lots	No Showers	No Showers	Poor	Poor / Non	Poor	No	0%	Very Poor
P45	4	Broomfield Park Leased Pitches, Montrose	70%	Good	No Changing	Yes - Lots	No Showers	No Showers	Poor	Poor / Non	Poor	No	0%	Very Poor
P46	3	Broomfield Park Leased Pitches, Montrose	65%	Good	No Changing	Yes - Lots	No Showers	No Showers	Poor	Poor / Non	Poor	No	0%	Very Poor

Active Angus 2020 – Evidence Paper 3 – Assessment of need of Indoor and Outdoor Sports Facilities

Sheet Name	Pitch Number	Site Name	Total Score	Pitch Rating	OVERALL QUALITY	EVIDENCE OF VANDALISM	SHOWERS	TOILETS	PARKING	LINKS TO PUBLIC TRANSPORT	SECURITY	SEGREGATED CHANGING	Total Score	Changing Rating
P47	2	Broomfield Park Leased Pitches, Montrose	68%	Good	No Changing	Yes - Lots	No Showers	No Showers	Poor	Poor / Non	Poor	No	0%	Very Poor
P48	1	Broomfield Park Leased Pitches, Montrose	68%	Good	No Changing	Yes - Lots	No Showers	No Showers	Poor	Poor / Non	Poor	No	0%	Very Poor
P49	5	Broomfield Park Council Pitches, Montrose	63%	Average	No Changing	Yes - Lots	No Showers	No Showers	Poor	Poor / Non	Poor	No	0%	Very Poor
P50	4	Broomfield Park Council Pitches, Montrose	72%	Good	No Changing	Yes - Lots	No Showers	No Showers	Poor	Poor / Non	Poor	No	0%	Very Poor
P51	3	Broomfield Park Council Pitches, Montrose	70%	Good	No Changing	Yes - Lots	No Showers	No Showers	Poor	Poor / Non	Poor	No	0%	Very Poor
P52	2	Broomfield Park Council Pitches, Montrose	67%	Good	No Changing	Yes - Lots	No Showers	No Showers	Poor	Poor / Non	Poor	No	0%	Very Poor
P53	1	Broomfield Park Council Pitches, Montrose	70%	Good	No Changing	Yes - Lots	No Showers	No Showers	Poor	Poor / Non	Poor	No	0%	Very Poor
P54	1	Borrowfield Park, Montrose	57%	Average	No Changing	Yes - Lots	No Showers	No Showers	Poor	Poor / Non	Poor	No	0%	Very Poor
P105	0	0	0%	0%	No Changing	Yes - Lots	No Showers	No Showers	Poor	Poor / Non	Poor	No	0%	0%
P57	0	Glamis Park, Glamis (used for local events only)	53%	Below Average	No Changing	Yes - Lots	No Showers	No Showers	Poor	Poor / Non	Poor	No	0%	Very Poor
P56	0	Forfar Academy - 2x 7-a-side/ 1 Full size	67%	Good	Excellent	None	Yes, Good Quality	Yes, Good Quality	Good	OK	Good	Yes	93%	Excellent
P55	1	Hillside Park	65%	Good	No Changing	Yes - Lots	No Showers	No Showers	Poor	Poor / Non	Poor	No	0%	Very Poor
P103	0	0	0%	0%	No Changing	Yes - Lots	No Showers	No Showers	Poor	Poor / Non	Poor	No	0%	0%
P58	0	Graham Crescent	55%	Average	No Changing	Yes - Lots	No Showers	No Showers	Poor	Poor / Non	Poor	No	0%	Very Poor
P59	0	Inverarity Primary (small 5-a-side at best)	53%	Below Average	No Changing	Yes - Lots	No Showers	No Showers	Poor	Poor / Non	Poor	No	0%	Very Poor

### Active Angus 2020 – Evidence Paper 3 – Assessment of need of Indoor and Outdoor Sports Facilities

Sheet Name	Pitch Number	Site Name	Total Score	Pitch Rating	OVERALL QUALITY	EVIDENCE OF VANDALISM	SHOWERS	TOILETS	PARKING	LINKS TO PUBLIC TRANSPORT	SECURITY	SEGREGATED CHANGING	Total Score	Changing Rating
P60	0	Kingsmuir Park	60%	Average	No Changing	Yes - Lots	No Showers	No Showers	Poor	Poor / Non	Poor	No	0%	Very Poor
P61	0	Lochside Park, Forfar	67%	Good	Excellent	None	Yes, Good Quality	Yes, Good Quality	Good	OK	Good	Yes	93%	Excellent
P62	0	Market Muir - Pitch leased by Forfar Farmington	65%	Good	Excellent	None	Yes, Good Quality	Yes, Good Quality	Good	OK	Good	Yes	93%	Excellent
P63	0	Muir Road, Kirriemuir (no pitch marked out)	43%	Below Average	No Changing	Yes - Lots	No Showers	No Showers	Poor	Poor / Non	Poor	No	0%	Very Poor
P67	0	Steele Park, Forfar	53%	Below Average	No Changing	Yes - Lots	No Showers	No Showers	Poor	Poor / Non	Poor	No	0%	Very Poor
P68	0	Tannadice Primary	52%	Below Average	No Changing	Yes - Lots	No Showers	No Showers	Poor	Poor / Non	Poor	No	0%	Very Poor
P69	1	Whitehills Park - x 7-a-side	58%	Average	No Changing	Yes - Lots	No Showers	No Showers	Poor	Poor / Non	Poor	No	0%	Very Poor
P70	11 a side pitch	Auchterhouse Park	62%	Average	No Changing	Yes - Lots	No Showers	No Showers	Poor	Poor / Non	Poor	No	0%	Very Poor
P72	Number 1 11 a side	Birkhill Park	47%	Below Average	No Changing	Yes - Lots	No Showers	No Showers	Poor	Poor / Non	Poor	No	0%	Very Poor
P73	Number 2 7 a side pitch	Birkhill Park	52%	Below Average	No Changing	Yes - Lots	No Showers	No Showers	Poor	Poor / Non	Poor	No	0%	Very Poor
P74	Pitch 1 Top side 11 a side Football	Carlogie Park	78%	Good	No Changing	Yes - Lots	No Showers	No Showers	Poor	Poor / Non	Poor	No	0%	Very Poor
P75	Pitch 2 Bottom side 11 a side Football, beside car park	Carlogie Park	73%	Good	No Changing	Yes - Lots	No Showers	No Showers	Poor	Poor / Non	Poor	No	0%	Very Poor
P76	11 a side pitch	Carnoustie House Grounds	58%	Average	No Changing	Yes - Lots	No Showers	No Showers	Poor	Poor / Non	Poor	No	0%	Very Poor

### Active Angus 2020 – Evidence Paper 3 – Assessment of need of Indoor and Outdoor Sports Facilities

Sheet Name	Pitch Number	Site Name	Total Score	Pitch Rating	OVERALL QUALITY	EVIDENCE OF VANDALISM	SHOWERS	TOILETS	PARKING	LINKS TO PUBLIC TRANSPORT	SECURITY	SEGREGATED CHANGING	Total Score	Changing Rating
P77	7 a side pitch 1	Carnoustie House Grounds	60%	Average	No Changing	Yes - Lots	No Showers	No Showers	Poor	Poor / Non	Poor	No	0%	Very Poor
P78	7 a side pitch 2	Carnoustie House Grounds	62%	Average	No Changing	Yes - Lots	No Showers	No Showers	Poor	Poor / Non	Poor	No	0%	Very Poor
P80	11 a side pitch	Monifieth High School	60%	Average	No Changing	Yes - Lots	No Showers	No Showers	Poor	Poor / Non	Poor	No	0%	Very Poor
P79	11 a side pitch ( near houses side )	Monifieth High School	65%	Good	No Changing	Yes - Lots	No Showers	No Showers	Poor	Poor / Non	Poor	No	0%	Very Poor
P82	Rugby Pitch	Monifieth High School	58%	Average	No Changing	Yes - Lots	No Showers	No Showers	Poor	Poor / Non	Poor	No	0%	Very Poor
P83	7 a side	Monikie Primary School	53%	Below Average	No Changing	Yes - Lots	No Showers	No Showers	Poor	Poor / Non	Poor	No	0%	Very Poor
P84	7 a side	Murroes Primary School	58%	Average	No Changing	Yes - Lots	No Showers	No Showers	Poor	Poor / Non	Poor	No	0%	Very Poor
P81	Hockey Pitch	Monifieth High School	58%	Average	No Changing	Yes - Lots	No Showers	No Showers	Poor	Poor / Non	Poor	No	0%	Very Poor
P85	7 a Side Pitch	Newbigging Park	62%	Average	No Changing	Yes - Lots	No Showers	No Showers	Poor	Poor / Non	Poor	No	0%	Very Poor
P86	11 a Side Pitch	Pitskelly Park	58%	Average	No Changing	Yes - Lots	No Showers	No Showers	Poor	Poor / Non	Poor	No	0%	Very Poor
P87	7 a side pitch 1	Pitskelly Park	57%	Average	No Changing	Yes - Lots	No Showers	No Showers	Poor	Poor / Non	Poor	No	0%	Very Poor
P88	7 a side pitch 2	Pitskelly Park	65%	Good	No Changing	Yes - Lots	No Showers	No Showers	Poor	Poor / Non	Poor	No	0%	Very Poor
P91	7 a side pitch Num 2 (close to car park)	Riverview Monifieth	70%	Good	No Changing	Yes - Lots	No Showers	No Showers	Poor	Poor / Non	Poor	No	0%	Very Poor
P92	7 a side pitch Num 3	Riverview Monifieth	70%	Good	No Changing	Yes - Lots	No Showers	No Showers	Poor	Poor / Non	Poor	No	0%	Very Poor



Active Angus 2020 – Evidence Paper 3 – Assessment of need of Indoor and Outdoor Sports Facilities

Sheet Name	Pitch Number	Site Name	Total Score	Pitch Rating	OVERALL QUALITY	EVIDENCE OF VANDALISM	SHOWERS	TOILETS	PARKING	LINKS TO PUBLIC TRANSPORT	SECURITY	SEGREGATED CHANGING	Total Score	Changing Rating
P90	7 a side pitch Num 1 ( running track one)	Riverview Monifieth	55%	Average	No Changing	Yes - Lots	No Showers	No Showers	Poor	Poor / Non	Poor	No	0%	Very Poor
P93	7 a side pitch Num 4	Riverview Monifieth	70%	Good	No Changing	Yes - Lots	No Showers	No Showers	Poor	Poor / Non	Poor	No	0%	Very Poor
P94	11 a side pitch (closest to Barry Camp)	Riverview Monifieth	67%	Good	No Changing	Yes - Lots	No Showers	No Showers	Poor	Poor / Non	Poor	No	0%	Very Poor
P95	11 a side pitch (Close to Changing Room)	Riverview Monifieth	67%	Good	No Changing	Yes - Lots	No Showers	No Showers	Poor	Poor / Non	Poor	No	0%	Very Poor
P96	7 a side pitch	Tealing - Inveraldie Park	43%	Below Average	No Changing	Yes - Lots	No Showers	No Showers	Poor	Poor / Non	Poor	No	0%	Very Poor
P97	0	0	0%	0%	No Changing	Yes - Lots	No Showers	No Showers	Poor	Poor / Non	Poor	No	0%	0%
P98	0	0	0%	0%	No Changing	Yes - Lots	No Showers	No Showers	Poor	Poor / Non	Poor	No	0%	0%
P99	0	0	0%	0%	No Changing	Yes - Lots	No Showers	No Showers	Poor	Poor / Non	Poor	No	0%	0%
P100	0	0	0%	0%	No Changing	Yes - Lots	No Showers	No Showers	Poor	Poor / Non	Poor	No	0%	0%
P101	0	0	0%	0%	No Changing	Yes - Lots	No Showers	No Showers	Poor	Poor / Non	Poor	No	0%	0%
P102	0	0	0%	0%	No Changing	Yes - Lots	No Showers	No Showers	Poor	Poor / Non	Poor	No	0%	0%
P108	0	0	0%	0%	No Changing	Yes - Lots	No Showers	No Showers	Poor	Poor / Non	Poor	No	0%	0%

Active Angus 2020 – Evidence Paper 3 – Assessment of need of Indoor and Outdoor Sports Facilities

Sheet Name	Pitch Number	Site Name	Total Score	Pitch Rating	OVERALL QUALITY	EVIDENCE OF VANDALISM	SHOWERS	TOILETS	PARKING	LINKS TO PUBLIC TRANSPORT	SECURITY	SEGREGATED CHANGING	Total Score	Changing Rating
P107	0	0	0%	0%	No Changing	Yes - Lots	No Showers	No Showers	Poor	Poor / Non	Poor	No	0%	0%
P106	0	0	0%	0%	No Changing	Yes - Lots	No Showers	No Showers	Poor	Poor / Non	Poor	No	0%	0%
P109	0	0	0%	0%	No Changing	Yes - Lots	No Showers	No Showers	Poor	Poor / Non	Poor	No	0%	0%
P110	0	0	0%	0%	No Changing	Yes - Lots	No Showers	No Showers	Poor	Poor / Non	Poor	No	0%	0%
P111	0	0	0%	0%	No Changing	Yes - Lots	No Showers	No Showers	Poor	Poor / Non	Poor	No	0%	0%
P112	0	0	0%	0%	No Changing	Yes - Lots	No Showers	No Showers	Poor	Poor / Non	Poor	No	0%	0%
P113	0	0	0%	0%	No Changing	Yes - Lots	No Showers	No Showers	Poor	Poor / Non	Poor	No	0%	0%
P114	0	0	0%	0%	No Changing	Yes - Lots	No Showers	No Showers	Poor	Poor / Non	Poor	No	0%	0%

Active Angus 2020 – Evidence Paper 3 – Assessment of need of Indoor and Outdoor Sports Facilities

4a Quality Proforma

Site Name :	
Site ID	
Pitch Number	
Typology	
Number of Games per Season	
Number Cancelled	
Date of survey:	
Weather Conditions:	
Surveyed by:	

Pitch	Rating	Rating (x)	
GRASS COVER	> 94%		5
	85% - 94%		
	70% - 84%		
	60% - 69%		
	< 60%		
	Other		
SCORE		0.00	
LENGTH OF GRASS	Excellent		5
	Good		
	Poor		
	Very Poor		
	Other		
SCORE		0.00	
SIZE OF PITCH / CRICKET FIELD	Yes - Full Size		3
	No - Adequate Size		
	No - Not Adequate Size		
	Other		
SCORE		0.00	
ADEQUATE SAFETY MARGINS	Yes - Full		3
	No - Adequate Margins		

Active Angus 2020 – Evidence Paper 3 – Assessment of need of Indoor and Outdoor Sports Facilities

	No - Not Adequate Margins			0
	Other			
<b>SCORE</b>		0.00		
SLOPE OF PITCH / CRICKET OUTFIELD (GRADIENT AND CROSS FALL)	Flat		5	0
	Slight			0
	Gentle			0
	Moderate			0
	Severe			0
	Other			
<b>SCORE</b>		0.00		
EVENNESS OF PITCH / CRICKET FIELD	Excellent		5	0
	Good			0
	Poor			0
	Very Poor			0
	Other			
<b>SCORE</b>		0.00		
PROBLEM AREAS: EVIDENCE OF DOG FOULING	None		3	0
	Yes - Some			0
	Yes - Lots			0
	Other			
<b>SCORE</b>		0.00		
PROBLEM AREAS: EVIDENCE OF GLASS / STONES / LITTER	None		3	0
	Yes - Some			0
	Yes - Lots			0
	Other			
<b>SCORE</b>		0.00		
PROBLEM AREAS: EVIDENCE OF UNOFFICIAL USE	None		3	0

Active Angus 2020 – Evidence Paper 3 – Assessment of need of Indoor and Outdoor Sports Facilities

	Yes - Some			0
	Yes - Lots			0
	Other			
<b>SCORE</b>		0.00		
PROBLEM AREAS: EVIDENCE OF DAMAGE TO SURFACE	None		3	0
	Yes - Some			
	Yes - Lots			
	Other			
<b>SCORE</b>		0.00		
NUMBER OF HOURS TRAINING	0		5	0
	1 to 2			
	2 to 4			
	4+			
	Other			
<b>SCORE</b>		0.00		
CHANGING ACCOMODATION	Yes		5	0
	No			
	Other			
<b>SCORE</b>		0.00		

PITCH SCORE	0.00	OUT OF	48
-------------	------	--------	----

Equipment	Rating	Rating (x)	
WINTER SPORTS ONLY - GOAL POSTS - QUALITY	Excellent		3
	Good		
	Poor		
	Other		
<b>SCORE</b>		0.00	
CRICKET ONLY - IS THE WICKET PROTECTED	Yes		3
	No		

Active Angus 2020 – Evidence Paper 3 – Assessment of need of Indoor and Outdoor Sports Facilities

	Other		
<b>SCORE</b>		0.00	
LINE MARKINGS - QUALITY	Excellent		3
	Good		
	Poor		
	Other		
<b>SCORE</b>		0.00	
TRAINING AREA	Yes		3
	No		
	Other		
<b>SCORE</b>		0.00	

0  
0  
0  
  
0  
0

EQUIPMENT SCORE	0.00	OUT OF	12
-----------------	------	--------	----

OVERALL	0.00	OUT OF	60
---------	------	--------	----

TOTAL SCORE	0%
-------------	----

This pitch rates as Poor

Changing Accomodation	Rating	Rating (x)	
OVERALL QUALITY	Excellent		10
	Good		
	Average		
	Poor		
	No Changing		
	Other		
<b>SCORE</b>		0.00	
EVIDENCE OF VANDALISM	None		5
	Yes - Some		
	Yes - Lots		
	Other		
<b>SCORE</b>		0.00	
SHOWERS	Yes - Good Quality		5

0  
0  
0  
0  
0  
  
0  
0  
0  
  
0

Active Angus 2020 – Evidence Paper 3 – Assessment of need of Indoor and Outdoor Sports Facilities

	Yes - OK Quality			0
	Yes - Poor Quality			0
	No Showers			0
	Other			
<b>SCORE</b>		0.00		
<b>TOILETS</b>	Yes - Good Quality		5	0
	Yes - OK Quality			0
	Yes - Poor Quality			0
	No Toilets			0
	Other			
<b>SCORE</b>		0.00		
<b>PARKING</b>	Good		3	0
	OK			0
	Poor			0
	Other			
<b>SCORE</b>		0.00		
<b>LINKS TO PUBLIC TRANSPORT</b>	Good		5	0
	OK			0
	Poor / Non			0
	Other			
<b>SCORE</b>		0.00		
<b>SECURITY</b>	Good		5	0
	OK			0
	Poor			0
	Other			
<b>SCORE</b>		0.00		
<b>SEGREGATED CHANGING</b>	Yes		3	0
	No			0
	Other			
<b>SCORE</b>		0.00		
<b>OVERALL</b>	0.00	OUT OF	41	
<b>TOTAL SCORE</b>	0%			

4b

#

## **ANGUS Playing Pitch Assessment Sports Club Questionnaire**

### **4b Sports Club Questionnaires – Football, Rugby, Cricket, Hockey**

**NAME OF CLUB:** \_\_\_\_\_

**CONTACT:** \_\_\_\_\_

**POSITION HELD:** \_\_\_\_\_

**ADDRESS:** \_\_\_\_\_

**POSTCODE:** \_\_\_\_\_

**TELEPHONE:** \_\_\_\_\_

**E-MAIL ADDRESS** \_\_\_\_\_

**Type of Club :** Professional \_\_\_\_ ; Semi Professional \_\_\_\_ ; Amateur \_\_\_\_ ;

1. What is the main sport your club plays: \_\_\_\_\_

#### **Club Membership**

2. How many playing members do you have at present? \_\_\_\_\_

3. **Is the membership of your sports club likely to decrease or increase over the next five years? Please tick the appropriate box and estimate how many extra or fewer members you expect**

Club Membership is likely to:

- Decrease** by approximately \_\_\_\_\_ members  
 **Grow** by approximately \_\_\_\_\_ members  
 **Remain** the same

4. Has your club got capacity for new members? Yes  No

5. Which of the following issues are currently problematic for your club? (Please tick all that apply)

- Lack of internal funding (subs / fundraising)
- Lack of external funding (Local Council / Governing Body)
- Lack of appropriate local facilities
- Access difficulties for members (cost, lack of public transport)



**Active Angus 2020 – Evidence Paper 3 – Assessment of need of Indoor and Outdoor Sports Facilities**

- Lack of information about local services
- Lack of volunteers / coaches
- Retaining / recruiting members
- Other: Please specify

---

Active Angus 2020 – Evidence Paper 3 – Assessment of need of Indoor and Outdoor Sports Facilities

Team Information

6. Please list the number of teams that your club runs (Please list all teams whether playing in National, County, or local leagues).

Type of Team	Team Name	League Played in	Day of home games	Venue for home games	Ownership of pitch
Senior or U12	e.g. Angus FC First Team	e.g. Unibond League – 1 <sup>st</sup> Div North	e.g. Saturday afternoon	e.g. College Grove	Please specify either: Angus Council Private / Club Owned Voluntary Organisation School / Education Other (Please state)

*Please attach a separate sheet if appropriate / required.*

7. From which part of the District do the **majority** of your players come from? Please state the name of the local neighbourhood / place name.

Coaching/Refereeing/Umpiring

8. (i) How many coaches operate within your club ? \_\_\_\_ (ii) Do you have any qualified referees or Umpires?

Please state the level or grade	Nos		Please state the level or grade	Nos

**Active Angus 2020 – Evidence Paper 3 – Assessment of need of Indoor and Outdoor Sports Facilities**






**Active Angus 2020 – Evidence Paper 3 – Assessment of need of Indoor and Outdoor Sports Facilities**

**Facilities Used** continued...

11. If you rated any pitches / other facilities poor or very poor in the previous question please expand below (e.g. if pitches regularly get flooded in the winter etc).

Site Name	Facilities	Reason why quality is poor
e.g Adam's Park	1 Cricket Pitch	e.g Very worn, pitch is bumpy, lots of litter and no changing facilities

12. Approximately how many cancellations were there last season on your home pitches? (excluding frozen pitches)

Site Name	Facilities	No. of cancellations	Reason for cancellation
e.g Berry Road	e.g 1 Adult Football	3	Water logging

**Access to facilities**

13. Please state how far you feel is an acceptable distance for the **majority** of your club members to travel to **your home pitch**

14. Please read the following statements below and **tick the one you agree with most**

What is more important to your club with regard to your home match venue?

- Access to good quality facilities, even if it means travelling further

- Having access to facilities within close proximity to where our teams come from, even if these are of a lower quality standard

15. Please use the space below to make additional comments relating to pitches used by your club – whether your home ground or other grounds used on a regular basis,

**Active Angus 2020 – Evidence Paper 3 – Assessment of need of Indoor and Outdoor Sports Facilities**

or if you plan to move to a new ground / site (*You may also use this space to make any other comments you think are relevant – please attach additional sheets if required*)

Thank you very much for taking part in this survey.  
Please place in the stamped addressed envelope  
and post before 30th January 2013.

## **ANGUS Playing Pitch Assessment Tennis and Bowls Club Questionnaire**

**NAME OF CLUB:** \_\_\_\_\_

**CONTACT:** \_\_\_\_\_

**POSITION HELD:** \_\_\_\_\_

**ADDRESS:** \_\_\_\_\_

**POSTCODE:** \_\_\_\_\_

**TELEPHONE:** \_\_\_\_\_

**E-MAIL ADDRESS** \_\_\_\_\_

**Type of Club :** Professional \_\_\_ ; Semi Professional \_\_\_ ; Amateur \_\_\_ ;

4. What is the main sport your club plays: \_\_\_\_\_

### **Club Membership**

5. How many playing members do you have at present? \_\_\_\_\_

6. **Is the membership of your sports club likely to decrease or increase over the next five years? Please tick the appropriate box and estimate how many extra or fewer members you expect**

Club Membership is likely to:

- Decrease** by approximately \_\_\_\_\_ members  
 **Grow** by approximately \_\_\_\_\_ members  
 **Remain** the same

4. Has your club got capacity for new members? Yes  No

5. Please state how many Tennis Courts or Bowls Greens your club has use of:

### **Tennis Courts:**

Number of non Floodlit Courts: \_\_\_\_\_

Number of Floodlit Courts: \_\_\_\_\_

### **Bowls Greens:**

Number of Bowls Greens and number of rinks: \_\_\_\_\_



**Active Angus 2020 – Evidence Paper 3 – Assessment of need of Indoor and Outdoor Sports Facilities**

**Clubhouse:**

Do you have access to a Clubhouse: Yes  No

6. Which of the following issues are currently problematic for your club? (Please tick all that apply)

- Lack of internal funding (subs / fundraising)
- Lack of external funding (Local Council / Governing Body)
- Lack of appropriate local facilities
- Access difficulties for members (cost, lack of public transport)
- Lack of information about local services
- Lack of volunteers / coaches
- Retaining / recruiting members
- Other: Please specify

---

---

Active Angus 2020 – Evidence Paper 3 – Assessment of need of Indoor and Outdoor Sports Facilities

**Team Information**

7. Please list the number of teams that your club runs (Please list all teams whether playing in National, County, or local leagues).

Type of Team	Team Name	League Played in	Day of home games	Venue for home games	Ownership of Courts/Green
Senior or U12	e.g. Angus FC First Team	e.g. Unibond League – 1 <sup>st</sup> Div North	e.g. Saturday afternoon	e.g. College Grove	Please specify either: Angus Council Private / Club Owned Voluntary Organisation School / Education Other (Please state)

*Please attach a separate sheet if appropriate / required.*

8. From which part of the District do the **majority** of your players come from? Please state the name of the local neighbourhood / place name.

**Coaching/Refereeing/Umpiring**

9. (i) How many coaches operate within your club ? \_\_\_\_ (ii) Do you have any qualified referees or Umpires ?

Please state the level or grade	Nos		Please state the level or grade	Nos

**Active Angus 2020 – Evidence Paper 3 – Assessment of need of Indoor and Outdoor Sports Facilities**




**Facilities Used** continued...

11. If you rated any Tennis Courts or Bowls Greens poor or very poor in the previous question please expand below.

Site Name	Facilities	Reason why quality is poor

**Access to facilities**

12. Please state how far you feel is an acceptable distance for the **majority** of your club members to travel to **your Club Courts or Green**

13. Please read the following statements below and **tick the one you agree with most**

What is more important to your club with regard to your home match venue?

- Access to good quality facilities, even if it means travelling further

- Having access to facilities within close proximity to where our teams come from, even if these are of a lower quality standard

14. Please use the space below to make additional comments relating to tennis courts or bowls greens used by your club – *(You may also use this space to make any other comments you think are relevant – please attach additional sheets if required)*

**Thank you very much for taking part in this survey  
Please place in the stamped addressed envelope and post  
before 30<sup>th</sup> January 2013**

**5. Maps – See Separate Document**

## 6. National FPM Analysis: Halls and Pools (Angus extract and summary)

### National FPM Analysis: Halls and Pools (Angus extract and summary)

A National Facilities Planning Model run was carried out in 2012 / 13 for Sports Halls and Swimming Pools.

The principles behind the FPM are described in the publication ‘**sportscotland** – Facilities Planning Model’ which is available on our website. In summary, it is a tool to provide an objective assessment of the likely demand for facilities. The demand comes from the population in the area and the model takes into account the distribution of it and its demographic structure. It should be noted that the National Analysis assesses the usage based on populations of 5km grid squares, whereas the local analysis considers 2km squares. This extract of the national analysis is therefore less reliable than a local analysis. Nonetheless the findings should be able to provide some useful information.

It should be stressed that the model does not predict actual usage of facilities, as this is determined by a wide range of factors such as management and programming. As the demand used is derived from national surveys, this will mask regional and local variations in participation levels. It is very useful to compare the patterns of use predicted by the FPM with actual throughput figures which could be completed to consider the accuracies and inaccuracies of the analysis.

For halls and Pools, the FPM models for attendance in the peak period – i.e. when centres are at their busiest. It includes for activity in the main halls, with the capacity figures being derived from survey work of usage patterns in sports centres.

The model uses a distance decay function in relation to how people travel to sports centres but notional times of 20 minutes are assumed for walkers and drivers. The model also includes for people travelling by bus.

The report below provides a brief summary of the national FPM outputs for Halls and Pools.

### **Angus Halls**

Angus has 25 Sports Halls in 10 sites at Schools and Sports Centres. Arbroath High School; Brechin High School; Brechin Leisure Centre; Carnoustie Leisure Centre; David Lloyd; Forfar Academy; Lochside Leisure Centre; Montrose Sports Centre; Saltire Leisure and Websters High School.

A total of 4 separate runs were carried out which considered the use of all Halls (including schools) and Halls (excluding schools). These scenarios were then considered at 40.5 hours per week and also against the actual opening hours.

To satisfy a population of 111920 the model suggests total demand to be 4787 visits during the peak hours per week. This requires the equivalent of approximately 30 badminton courts. Angus has an equivalent floor space of 62 badminton courts across all sites.

**Run1: All Halls open at 40.5 hours per week**

In this scenario 90.2% of demand is satisfied. Of the remaining 9.1% of demand which is unmet, this is due to distribution of the population which results in residents being outwith the recognised catchment area.

Not all users of sports halls originate from within Angus. 86.7% of visits are from the Angus local authority. 13.3% of visits are from residents of adjoining local authorities.

Overall a total of 34% of total hall capacity is used leaving 66% of capacity unused.

The additional run which considered the actual opening hours had very marginal differences to Run 1.

**Run2: All non schools at 40.5 hours per week**

In this scenario the number of sites reduces to from 10 to 7 containing 14 sports halls with an equivalent floor space of 40 badminton courts. In terms of capacity the number of badminton courts still provides over 10 courts more than is demanded. A total of 86.4% of demand is satisfied and 13.6% unmet.

Of the unmet demand 91.6% is due to users being outwith the catchment area. Only 8.4% is due to a lack of capacity which equates to approximately 54 visits during the peak hours per week.

86.6% of visits are from the Angus local authority. 13.4% of visits are from residents of adjoining local authorities.

Overall the analysis for Halls demonstrates, as in most other local authorities that there are ample sports halls to satisfy existing demand. Run 2 demonstrates that when the school estate is removed the level of satisfied demand drops slightly from 90.2% to 86.4%. Importantly there is an increase, if only marginal of unsatisfied demand due to capacity constraints. This leads to the conclusion that the school estate does provide much needed access to sports halls in areas not served by sports centres.

Again the additional run which considered actual opening hours had very similar results.

**Angus Pools**

Angus has a total of 7 swimming pools which are all publicly available. Arbroath Sports Centre; Brechin High School; Carnoustie High School; Forfar Swimming Pool; Monifieth High School; Montrose Swimming Pool and Webster's Sports Centre.

A single run was completed nationally using the actual opening hours of each swimming pool.

Again as this was a national run 5km grid squares rather than 2km grid squares were used therefore the result are not as accurate as a local analysis.

To satisfy the population a total of 7008 swims are demanded during the peak hours per week. This requires the equivalent of 1232m<sup>2</sup> of water space which includes a comfort factor to ensure pools are not restrictively busy. Angus has a total of 1000m<sup>2</sup> of water space therefore 100% of demand cannot be satisfied. Satisfied demand however is reasonably high at 89.5%.



## **Active Angus 2020 – Evidence Paper 3 – Assessment of need of Indoor and Outdoor Sports Facilities**

Unmet demand is relatively low at 10.5% which is 739 visits. Only 8% of this total however is due to a lack of capacity which equates to 59 visits per week. As with Sports halls the unmet demand is primarily down to users residing out with the catchment area of the pools.

The model predicts that 77.4% of satisfied demand is from the Angus local authority and 22.6% of visits are from residents of adjoining local authorities.

The only two swimming pools which are considered to be operating at 100% capacity are Brechin High School and Carnoustie High School. Generally the model indicates that all pools in Angus are well used. On average 75% of capacity is utilised, against a national average of 45.1% which indicates the pools are well placed to serve the population. The analysis does not consider there to be enough unmet demand to warrant development of another pool but given the high usage rate the loss of any pools would likely have a significant impact.