

Arbroath & Area Locality Plan 2017



Sept
2017

Economy
People
Place

Contents

| | |
|---|----|
| Introduction | 3 |
| Why Locality? | 4 |
| The Story So Far... | 6 |
| Our Vision | 8 |
| What We Know About The Arbroath & Area Locality | 10 |
| What The Data Is Telling Us | |
| What People Are Telling Us | |
| Our Priorities And What We Are Going To Do | 16 |
| Our Commitments | 19 |

Introduction

The way in which we plan for our communities and people in Angus is changing. Traditionally, local planning has involved organisations, services and partners thinking about their own areas of knowledge and expertise and not about the whole place for which they were planning. That will be different in the future.

This first locality plan for Arbroath & Area has been prepared on behalf of the Angus Community Planning Partnership and was developed through a cooperative process involving local residents, community organisations, and partner agencies in the voluntary, private and public sectors.

In that process, we have been thinking about what we can all do together to improve the quality of life for people who live in the area.

Our first locality plan for Arbroath & Area will:

- explain why we want to work better together locally
- set out a range of areas for action to bring about positive change, and provide some information on how we have arrived at these areas for action
- describe some of the ways in which we are going to work differently in the future



Why Locality?

We all know that the Arbroath area is a place where most people enjoy a good quality of life. However, that isn't the case for all members of the community and our commitment is to change that. We want everyone to live in a community which is safe, secure and vibrant and in which they can achieve success and enjoy good physical, mental and emotional health and well being.

Our best chance of achieving this goal is to put people and communities at the centre of our planning and delivery. This means working with people to tackle the things that matter most to them and to make a positive difference to their lives and communities. It also means recognising that communities can and do achieve things for themselves. We need to build on this and increase the level of influence and control that local people have over the decisions and services that have an impact on their lives and communities.

We think that we can achieve more and make a bigger difference if we work better together at a local level.





Because of all this, the Angus Community Planning Partnership has changed its structure and has now identified four localities which will be the building block for its planning from now on. Arbroath & Area is one of those localities. If we put localities at the heart of our planning process, we will be able to develop new ways of working which focus less on who we work for and more on how our collective efforts can make our communities stronger. By doing this we will help to achieve the wider ambitions which the Angus Community Planning Partnership has set for itself in the Angus Local Outcomes Improvement Plan. This is a plan which the partnership has created through a development process involving communities and all of the partners. It sets out a number of ambitions for reducing inequalities in Angus and building services around people and communities.

We recognise that the localities we have identified are made up of a number of communities and that each of these communities is unique. We also understand that they do not operate in isolation from each other and that economies of scale can be achieved by working in bigger units. Our challenge is to honour the uniqueness of each community while taking the advantage that can be gained by linking communities together for some things.

If we are to meet our commitment to achieve the highest quality of life for all of the people of the Arbroath area, then we need to combat the effects of poverty and inequality. This means targeting our efforts and resources to those who will benefit most in a way that we haven't done before. We are determined to do this.

We believe that the locality approach we are taking in Angus is the right one for us. It is also consistent with wider research and social and economic policies.

This first locality plan for the Arbroath area identifies the areas in which we will take action to bring about positive change in the area, based on our understanding of the communities that make up the locality and what matters to the people who live and work there. It is a plan for the whole community and for all aspects of its development – economic, social and physical.



The Story So Far...

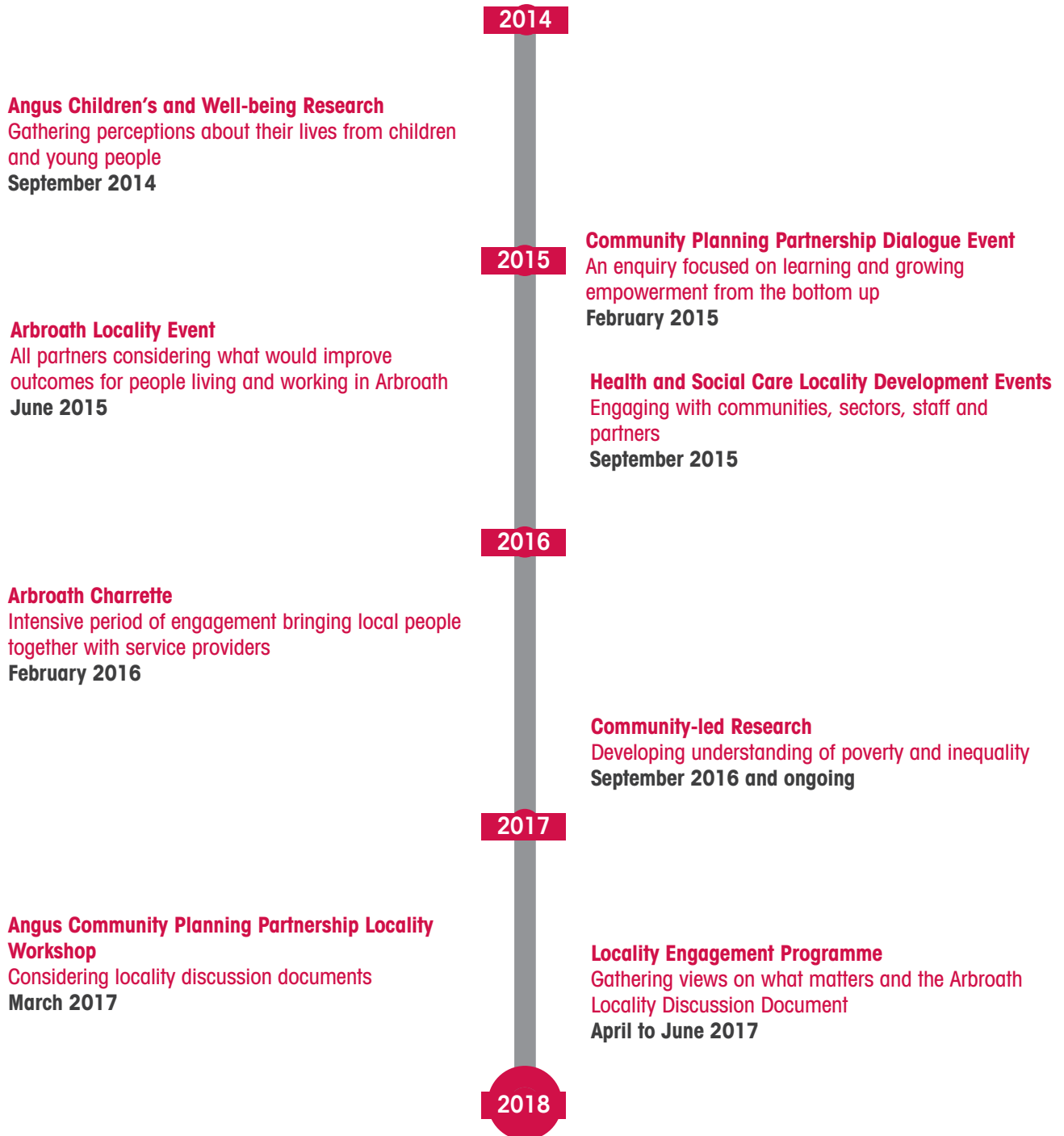
We have been working towards the publication of the Arbroath Locality Plan for some time.

The areas for action which are included in the plan have emerged from a wide range of consultation and engagement activity over the past three years. Some of this activity has taken place across Angus, to help us prepare plans and provide services in important areas such as health and social care, housing, services for children and young people, community safety and community learning.

Existing Angus Strategies



Most of the activity has been local and designed to provide people who live and work in localities with opportunities to tell us what they know about the place, say what matters most to them and come up with ideas and proposals for making the locality a better place for everyone.



Our Vision For Angus

The Angus Community Planning Partnership has a vision for Angus.

| | | | | | |
|---------------------------------|--|----------------|------------------|-----------------------------|----------------|
| National Objectives | Wealthier & Fairer | Smarter | Healthier | Safer & Stronger | Greener |
| Our Vision | <i>Angus is a great place to live, work and visit</i> | | | | |
| Our Priorities | Tackling inequalities Building services around people and communities Focusing on prevention Working together effectively | | | | |
| Our Cross-Cutting Themes | Economy | People | | Place | |
| Our Local Outcomes | | | | | |

Our Vision For Arbroath

We See A Future For Arbroath In Which:

Economy – we are ambitious and promote our assets effectively to create a vibrant local economy. There are good opportunities for businesses to grow. Arbroath offers well-paid local employment which meets the needs of our people. Our workforce is flexible, skilled and meets the needs of the employment market. The town offers a competitive location for large employers and small businesses. It is a top visitor destination, attracting local, national and international visitors

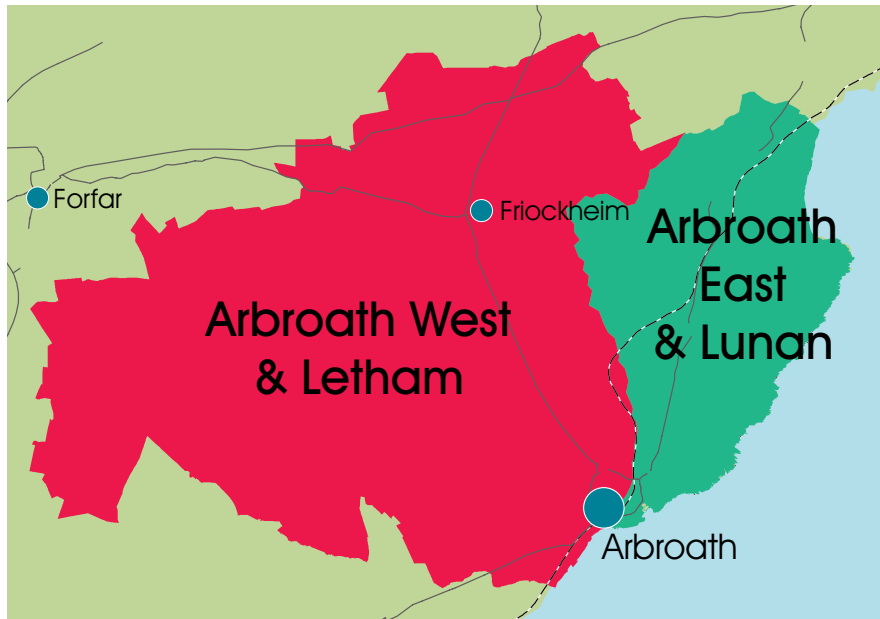
People – our people have a positive outlook on life. They enjoy good physical, emotional and mental wellbeing, living healthy and active lives free from the impact of poverty and inequality. People enjoy fair access to opportunities wherever they live in the town and surrounding area. The services that are provided in the locality are planned around people's particular needs and everyone can access them in ways that are right for them. Our children and young people are achieving and attaining at a high level in their learning in and out of school and this is improving their long term prospects. We have strong communities within the Arbroath area which deliver a wide range of services and activities that promote a sense of pride in our place. Our communities work positively and enthusiastically together to achieve the things that are important to them



Place – Arbroath is an authentic town with great physical assets and a proud history. It is a highly desirable place to live, work and visit. The town centre is vibrant and plays an important part in the town's social and economic life. There are no longer any empty properties and sites. Arbroath town centre is one of the most accessible and pedestrian friendly places in Scotland. The villages in the locality are attractive and welcoming and we get the most out of the spectacular coastal landscape and natural environment. Arbroath is a well-connected place. Movement around the town is easy and there are good connections to the surrounding villages, countryside and to wider Angus and Scotland. Digital connections are good and all residents can benefit from the communication opportunities they provide. The quality of housing is good and there is a range of housing options which meet the needs of our people.



What We Know About The Arbroath & Area Locality



Arbroath is the largest town in Angus. It lies on the North Sea coast 17 miles north-east of Dundee and 51 miles south of Aberdeen. The Arbroath locality covers the town of Arbroath and a number of villages including Letham, Friockheim and Inverkeillor. The population of the locality is just below 32,000, the majority of whom live in Arbroath.

There are two electoral wards in the locality; Arbroath West and Letham and Arbroath East and Lunan. These wards are served by seven elected members.

There are three community councils in the area; Arbroath, Letham and Friockheim.

Arbroath relies heavily on the public sector, manufacturing and retailing for its employment opportunities and economic prosperity. It once had a thriving fishing and fish processing industry but – in common with much of the North East of Scotland – this has declined in modern times. However the 'Arbroath Smokie' is an internationally recognised product of the town. Agriculture and soft fruit are major employers in the area. Tourism plays an important role in the local economy and the locality has several significant tourist attractions including the historic Arbroath Abbey, Arbroath harbour and an attractive seafront.

Arbroath has two secondary schools, Arbroath High School and Arbroath Academy. There are 12 primary schools in the combined Arbroath catchment areas. Some of the children and young people living in the locality access their education in schools which are part of the Carnoustie and Forfar catchments.

Dundee and Angus College has its main Angus campus in Arbroath, offering further and higher education opportunities to people from across Angus.

Arbroath Infirmary provides some medical services to Arbroath and Angus. There are three GP practices in the locality, two of which are in Arbroath and the third in Friockheim.

A range of national and local third sector organisations including Voluntary Action Angus and Angus Carers are based in the town of Arbroath. These provide support and services to residents of Arbroath and Angus.

There is a good range of community organisations and groups in the locality. These organisations work hard to promote and develop the town and the wider locality area. They include volunteer led youth organisations such as the Café Project, tenants' groups and networks, action networks, sports and cultural organisations. Community groups plan and deliver a range of significant annual events and activities which can be enjoyed by the whole community and visitors. These include Arbroath Sea and Food Festival and the Auchmithie HAAR. Groups in both the town and surrounding villages carry out pride in place activities that enhance the appearance of the area and contribute to a deeper sense of 'community'. A growing number of community-led organisations either control and manage important assets, or are working towards this goal. These include village halls, Friockheim Community Hub, Seaton Park and some local sports groups such as the Arbroath Athletic Arena. They are seeking to enhance community facilities and to contribute to a better future for the area.

Arbroath has two leisure centres - Arbroath Sports Centre (west end of Arbroath) and the Saltire Sports Centre (north end of Arbroath). These centres offer a wide range of sports, fitness and leisure opportunities. There are two theatres within the town. The Abbey Theatre is managed by the local community and provides an outlet for amateur theatre. The larger Webster's Theatre offers a varied programme throughout the year and is the only venue for professional theatre in Angus. Other important cultural attractions in the locality include Hospitalfield House and the Signal Tower Museum.

Arbroath is well connected by road and rail. The A92 provides links to the north and south. The section between Arbroath and Dundee is dual carriageway and this has improved road access to the city and the work, shopping and leisure opportunities it offers. There is a good rail service to Dundee and to the cities of Aberdeen, Edinburgh and Glasgow via the main east coast rail line. Bus services in Arbroath are good and well used. There are also services to other parts of the locality and Angus, but these are more variable.

What The Data Is Telling Us

Arbroath Population Statistics



15,694
Arbroath
East & Lunan
Ward

Source: National Records of Scotland, 2016 projection



7627
49%
Male



18%
Children



116,520
Angus

Source: National Records of Scotland, mid 2016 estimate



8067
51%
Female



62%
Working Age



20%
Pensionable Age



16,204
Arbroath
West & Letham
Ward

Source: National Records of Scotland, 2016 projection



7948
49%
Male



15%
Children



8255
51%
Female



62%
Working Age



23%
Pensionable Age

Ethnicity

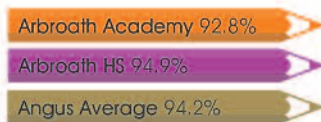


Source: Census 2011

White Scottish 89%
White Other 9%

Asian, Asian Scottish or Asian British 1.5%
Other Ethnic Groups 0.5%

Education: Positive Destinations by School



Positive Destination: School leavers moving into further education, higher education, employment or training. Source: Angus Council, 2014/15

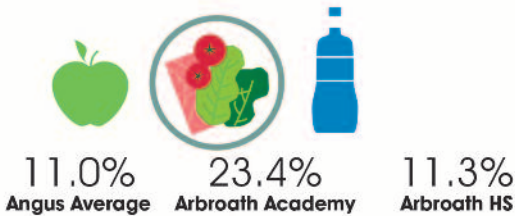
SIMD16:

4125 People income deprived and receiving certain benefits/tax credits

2010 Working age people employment deprived and receiving certain benefits

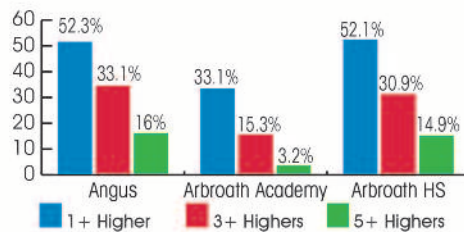
Source: Scottish Index of Multiple Deprivation 2016, Arbroath West & Letham Ward, and Arbroath East & Lunan Ward

Free School Meals



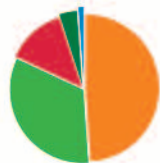
Source: Angus Council, March 2016 census

Exam Results 2016, S5



Source: SQA National, Dist 2016

General Health



Source: Census 2011

Very Good 49%
Good 33%
Fair 13%
Bad 4%
Very Bad 1%

Housing



Source: Census 2011

Inequalities

While most of the people living in the Arbroath locality enjoy a good quality of life, significant numbers do not. There are a number of areas and aspects of life in which some people do less well than others in the locality, across Angus and in comparable communities elsewhere in Scotland. The aspects of life in which parts of the area do less well include:

In parts of north and central Arbroath

- children and young people's attainment at school falls below the Angus baseline and other comparable communities
- the rate of people dying early (before 75) is higher than in other areas
- housing is rated comparatively poorly in terms of central heating and/or overcrowding
- crime rates, while falling, are still higher than in other areas
- the rate of child poverty is higher than in Angus as a whole and in some places is predicted to continue rising
- income levels are low with more than one in five people classed as "income deprived"
- the number of people who are not working and depend on benefits is high

In the Arbroath Harbour area life expectancy is significantly shorter than elsewhere in Angus and Scotland. This is particularly true for men.

In the Keptie area of west Arbroath

- rates of recorded crime are rising and are above those for other parts of Angus and in comparable communities
- there has been a steep increase in the rate of premature deaths (under 75) amongst older people, which is well above the Angus baseline and predicted to continue rising

More detail is available at www.angus.gov.uk/cpplocalities

What People Are Telling Us



Our Priorities And What We Are Going To Do

We have worked together to analyse all of the information that we have about Arbroath and used this to help us decide the areas in which we need to take action if we are to achieve our outcomes. These areas of action have emerged from:

- the Angus Local Outcomes Improvement Plan and other shared plans
- conversations between people and partners
- the data we have about the area

| Economy | Areas for Action |
|--|---|
| An inclusive and sustainable economy | <p>Together we will increase accessibility in and around town by:</p> <ul style="list-style-type: none"> • improving disability access • developing cycle and walking paths |
| A skilled and adaptable workforce with attractive employment opportunities | <p>Together we will develop and market the unique selling points of Arbroath by:</p> <ul style="list-style-type: none"> • making the most of the local assets • creating dynamic offers and experiences • implementing the Arbroath actions under Tay Cities Deal <p>Together we will increase visitor accommodation, exploring options for hotel developments</p> |
| Attractive employment opportunities | <p>Together we will ensure business sustainability and growth by:</p> <ul style="list-style-type: none"> • supporting existing businesses • growing new businesses <p>Together we will improve employment prospects by:</p> <ul style="list-style-type: none"> • creating new opportunities for employment • delivering coordinated and responsive employability services • developing workforce skills for the present and future <p>Together we will improve the digital infrastructure to support economic growth and development</p> <p>Together we will bring empty properties in the town centre back into use</p> |

| People | Areas for Action |
|---|--|
| <p>The best start in life for children</p> <p>More opportunities for people to achieve success</p> <p>Improved physical, mental and emotional health and well-being</p> | <p>Together we will promote mental health, wellbeing and resilience, targeting those in most need</p> <p>Together we will ensure equity of access to learning and participation opportunities by:</p> <ul style="list-style-type: none"> • removing barriers (cost, transport) • developing skills • building confidence <p>Together we will improve access to services by:</p> <ul style="list-style-type: none"> • removing barriers • improving and supporting digital access • developing digital skills • developing smoother referral and transition arrangements • redesigning offline services to meet needs <p>Together we will tackle social isolation in relation to:</p> <ul style="list-style-type: none"> • health and mobility • age • rurality <p>Together we will enable local people to take forward action that is important to them and their communities by:</p> <ul style="list-style-type: none"> • having influence over services, decisions and budgets • delivering services • owning and managing community assets • building stronger community organisation and infra-structure <p>Together we will address substance misuse through prevention, early intervention and recovery approaches to smoking, alcohol and illegal drugs</p> <p>Together we will assist people to maximise their income by:</p> <ul style="list-style-type: none"> • helping them to access Personal Independence Payments • mitigating the impact of welfare reform • helping them to develop their money management skills • tackling fuel poverty • tackling food poverty <p>Together we will support people in relation to obesity related diabetes</p> <p>Together we will act early to support pregnant women and young families by:</p> <ul style="list-style-type: none"> • targeting need • delivering family learning programmes • developing early intervention approaches <p>Together we will improve progression and transition for people with additional support needs by:</p> <ul style="list-style-type: none"> • developing flexible learning opportunities • creating and extending pathways <p>Together we will increase children and young people’s levels of achievement and attainment through:</p> <ul style="list-style-type: none"> • early intervention • targeted support • increased pupil equity • curriculum development and flexibility |

| Place | Areas for Action |
|--|---|
| An enhanced, protected and enjoyed natural and built environment | <p>Together we will increase housing numbers in Arbroath, Friockheim and Inverkeillor by:</p> <ul style="list-style-type: none"> • facilitating new housing developments , including accessible and affordable housing • delivering the Abbey Quarter housing regeneration scheme • developing empty properties in the town centre for residential use |
| A reduced carbon footprint | <p>Together we will improve the quality of the housing stock through:</p> <ul style="list-style-type: none"> • large scale housing-led regeneration in West Arbroath • the council's home improvement programme • Initiatives to tackle fuel poverty |
| Safe, secure, vibrant and sustainable communities | <p>Together we will improve connections within the town and with its hinterland by:</p> <ul style="list-style-type: none"> • improving pedestrian and cycling provision • making better use of green spaces • developing path networks • improving links from railway and bus stations to the town centre • exploring redesign options for Burnside Drive (dual carriageway) <p>Together we will carry out further flood mitigation works along the Brothock Water</p> |

More specific and detailed actions will be included within appropriate shared and single agency plans.

Our Commitments

Tackling inequality

We are committed to combatting poverty and inequality in Angus. We will use our resources purposefully to make Angus a fairer place for everyone to live. This means that we will have to move some of those resources between localities to make sure that we are committing them where they are most needed and will make the biggest difference.

But we will take action in all four of our localities. In Arbroath our priorities will be to:

- do everything that we can to lessen the impact which poverty and inequality are having in our communities
- target resources where there is greatest need in North and Central Arbroath
- adopt early intervention approaches and prevention
- improve access to services by reducing barriers

Working Together

In the Arbroath area we will work together to achieve the best possible outcomes for the locality. This will involve:

- putting local people and places at the heart of our planning and delivery, involving individuals and groups in the design, delivery and evaluation of services and initiatives
- leaders in the community and all organisations providing inspiration and clear direction, with a focus on building a strong culture of joint working, based on shared values. They will also assume collective responsibility for delivering the changes and improvements that we all want to see
- working within a set of values which we share. As we develop our work together, we will demonstrate that we
 - actively care about each other and our communities
 - are committed to achieving a fairer and more equitable Arbroath area
 - are committed to tackling problems and developing solutions together
 - respect each other as equal partners in a joint enterprise

- developing new ways of working that are right for the Arbroath area. This will help us to make the biggest possible difference to the people and community. We will be innovative, flexible, smarter and open to taking considered risks. We are committed to learning from experience and will use all of the information available to help us keep developing and improving the services we deliver
- establishing a Locality Implementation Partnership. The members of this partnership will be key leaders from the community and from voluntary, private and public sector organisations. The partnership will be focussed on action and charged with responsibility for ensuring that the actions and commitments set out in this plan are delivered
- holding at least two wider partnership events each year, which will be open to all of the organisations that are active in the area
- working with the Executive Group for Angus Community Planning Partnership which will both oversee and support the work of the Locality Implementation Partnership. This is the group which will be responsible for looking across Angus and helping to ensure that resources are committed where they are most needed.

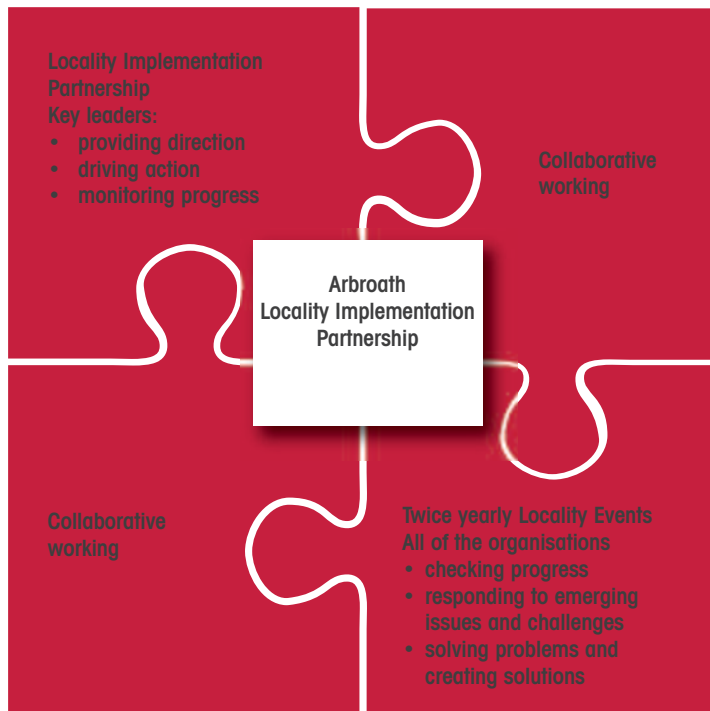
Localities Empowering Opportunities
Prevention Communities Democratic **Values**
Work Together Fairer Actively Care
Respect Engage **Equitable**



Angus Community Planning Partnership



the Arbroath Area Locality Implementation Partnership



Resources

Together we will do everything we can to make sure that all of the resources available in the Arbroath area are used to help us achieve our ambitions and deliver this plan. In order to do that we will have to:

- develop our understanding of the resources which are available. In addition to the budgets and staff of partner organisations this needs to include an understanding of the many contributions that communities make through:
 - formal and informal volunteering
 - their social, community and work networks
 - the knowledge they have
 - the community resources and facilities they control
- develop a better understanding of how we are using resources now and where our challenges lie if we are to shift them to help us address our shared priorities
- make sure that the actions and ambitions set out in this plan drive activity and the deployment of resources within each of our separate organisations. This will help to ensure that we are fully committing to a locality way of working and to our shared vision and ambition
- invest in our people. By this we mean all of the people who have a contribution to make and not just those who work in public services. We need to recognise the skills, knowledge and experience which people have and allow them the freedom to use these to help us achieve our goals. We also need to provide the learning and support that people need to help them deliver change
- be prepared to share and shift resources. This means thinking about resources in a more collective way as one total “pool of resources” for the locality. If we develop this type of thinking, we will open up new possibilities for using resources differently and targeting them where they will make most difference. This is a major challenge, but one which we want to take on because it is the right thing to do.



Prevention

Together we will do everything we can to shift our resources to where we think they can make the biggest difference in the long term. This means giving greater priority to ensuring that children and young people get the best possible start in life and that – across the range of our work – we take early action when things start to go wrong. This will help us to reduce the amount of time and money we spend responding to problems and situations that could have been avoided if we had acted sooner.

Accountability

Together we are committed to developing the new ways of working, delivering on the actions and achieving the ambitions that are set out in this plan.

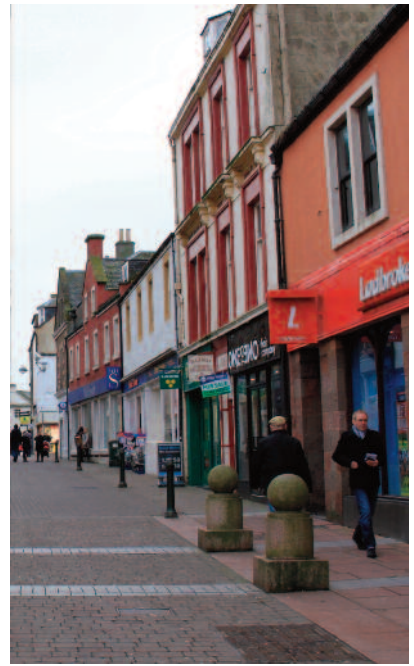
We want to be accountable to each other for all of this, and will achieve this by:

- keeping everyone informed of what we are all doing and achieving. We will do this in a variety of ways including online media, the local printed press, and updates to local groups.
- updating on progress at the twice yearly locality events we will hold
- carrying out a yearly “sense check” with members of the community to find out if things are improving for them
- making regular progress reports to the Angus Community Planning Partnership Executive Group and, through it, to the Partnership Board
- publishing our progress reports
- reviewing the plan











Angus Alive
Angus Council
Community
Department of Work & pensions
Dundee & Angus Chamber of Commerce
Dundee & Angus College
Federation of Small Businesses
Forestry Commission
Integration Joint Board
NHS Tayside
Police Scotland
Private Sector
Scottish Enterprise
Scottish Environmental Protection Agency
Scottish Fire & Rescue
Scottish Natural Heritage
Skills Development Scotland
Sports Scotland
TACTRAN
Third Sector Collaborative
Visit Scotland
Voluntary Action Angus

Charettes photographs courtesy of Austin Smith: Lord

Designed by Communications
Printed by Digital Reprographics, Angus Council