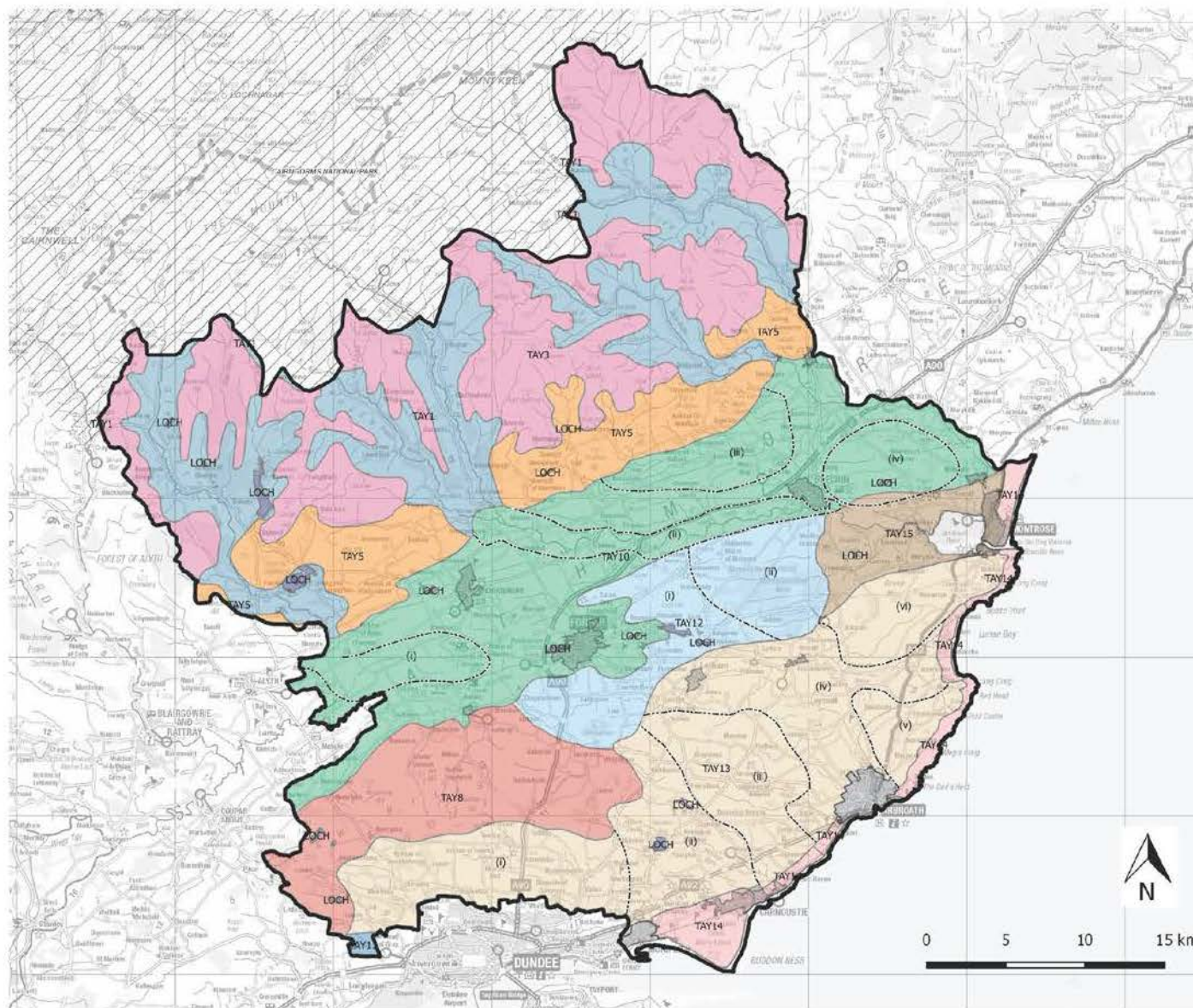




**Fig 2
Strategic Landscape
Capacity Assessment for
Solar Energy in Angus**



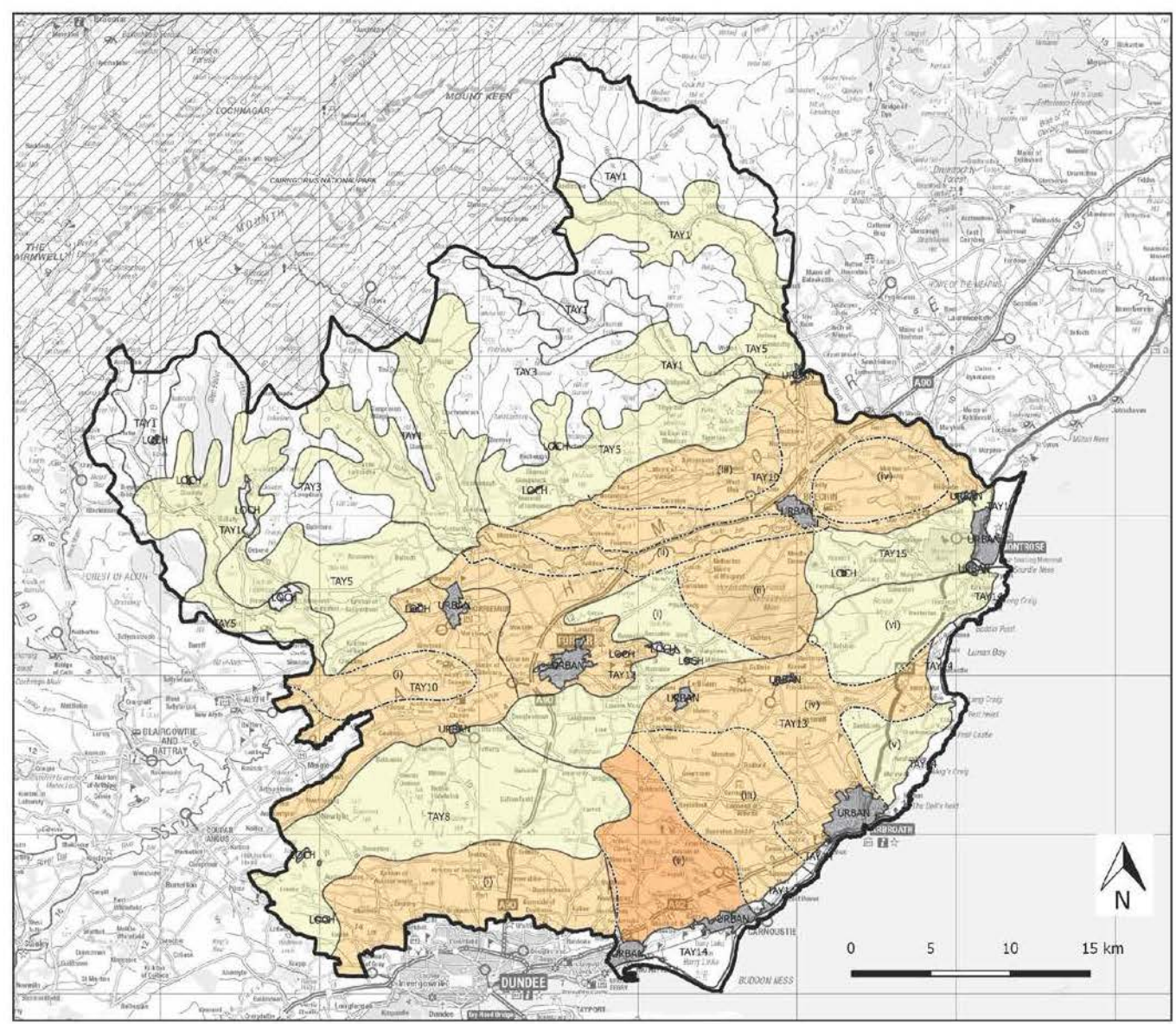
Legend

- Study Area
- Angus Council Boundary
- Cairngorms National Park
- LCA Sub Areas
- Landscape Character Type**
- Loch, Inland Loch
- Tay10, Broad Valley Lowland
- Tay14, Coast
- Tay13, Dipslope Farmland
- Tay5, Highland Foothills
- Tay1, Highland Glens
- Tay3, Highland Summits and Plateaux
- Tay8, Igneous Hills
- Tay12, Low Moorland Hills
- Tay15, Lowland Loch Basin
- Urban, Urban

Reproduced by permission of Ordnance Survey on behalf HMSO.
© Crown copyright and database rights 2016. All rights reserved. 100023404.



Fig 3
Underlying Landscape Capacity by Landscape Character Types and Areas



Legend

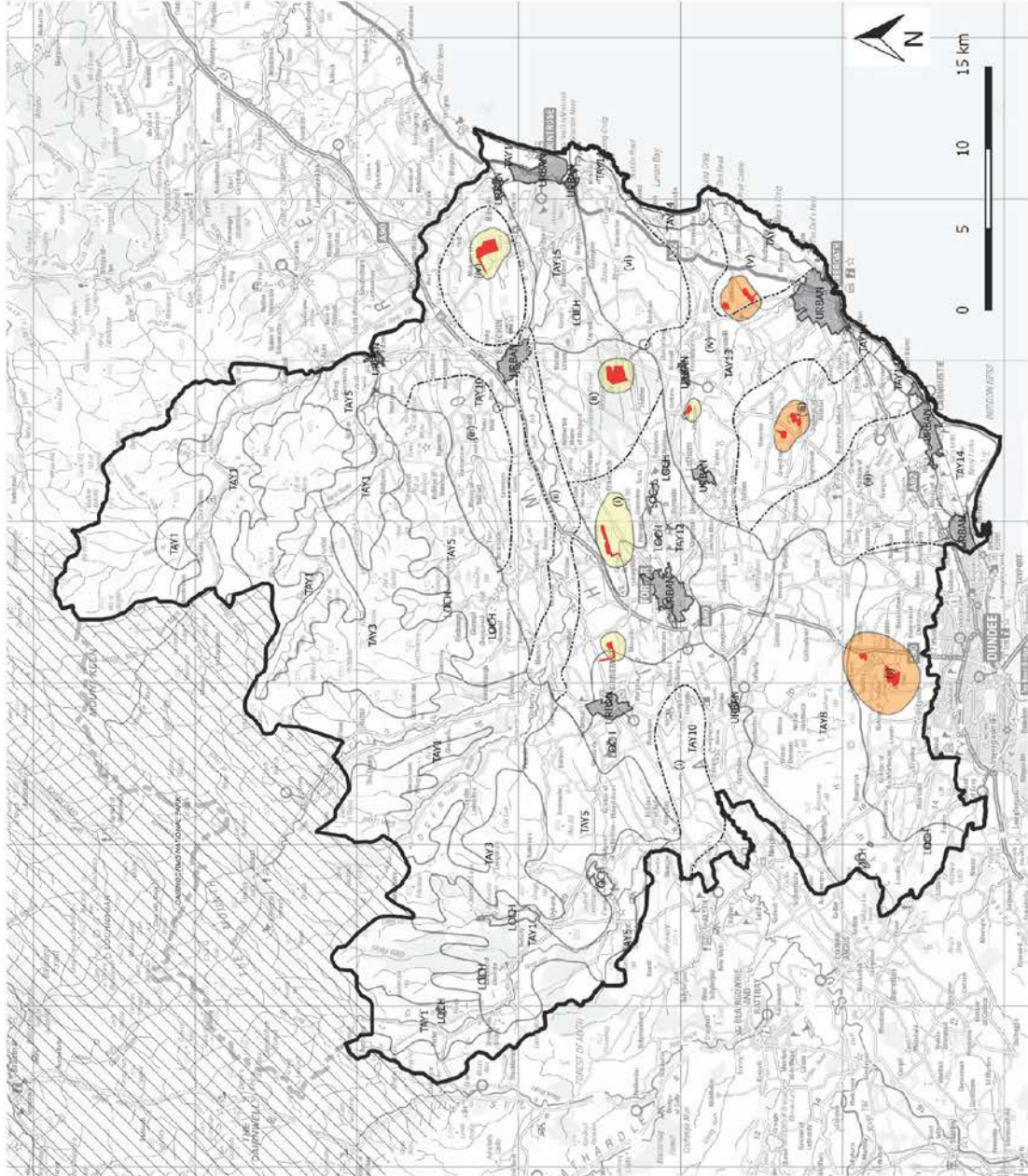
- Study Area
- Angus Council Boundary
- Cairngorms National Park
- Landscape Character Type/Area Boundary
- LCA Sub Areas
- Landscape Capacity**
- High Capacity
- Medium Capacity
- Low Capacity
- No Capacity
- Urban

Reproduced by permission of Ordnance Survey on behalf HMSO.
 © Crown copyright and database rights 2016. All rights reserved. 100023404.



Fig 4
Current Consented Development:
Solar Photovoltaic Landscape
Type

- Legend**
- Study Area
 - Angus Council Boundary
 - Cairngorms National Park
 - Landscape Character Type/Area Boundary
 - LCA Sub Areas
- Typology**
- Landscape with no Solar PV
 - Landscape with Occasional SolarPV
 - Landscape with Solar PV
 - Solar PV Landscape
- Consented Development**
- Consented solar pv



Reproduced by permission of Ordnance Survey on behalf HMSO.
 © Crown copyright and database rights 2016. All rights reserved. 100023404.



Fig 5
Proposed Limits to Development:
Solar Photovoltaic Landscape
Type

Legend

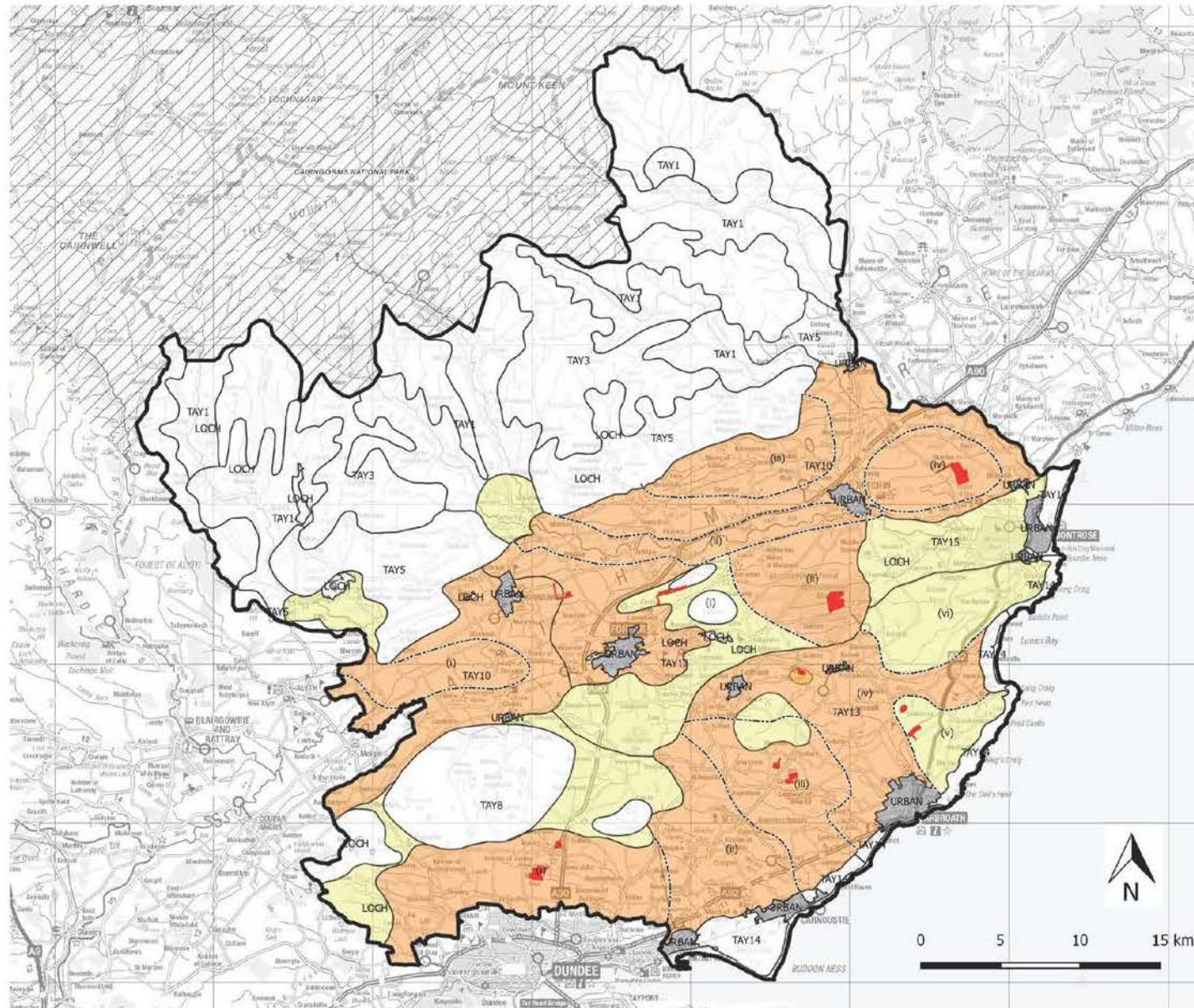
- Study Area
- Angus Council Boundary
- Cairngorms National Park
- Landscape Character Type/Aea Boundary
- LCA Sub Areas

Typology

- Landscape with no Solar PV
- Landscape with Occasional Solar PV
- Landscape with Solar PV
- Solar PV Landscape

Consented Solar PV

- Consented solar pv



Reproduced by permission of Ordnance Survey on behalf HMSO.
 © Crown copyright and database rights 2016. All rights reserved. 100023404.