

Item

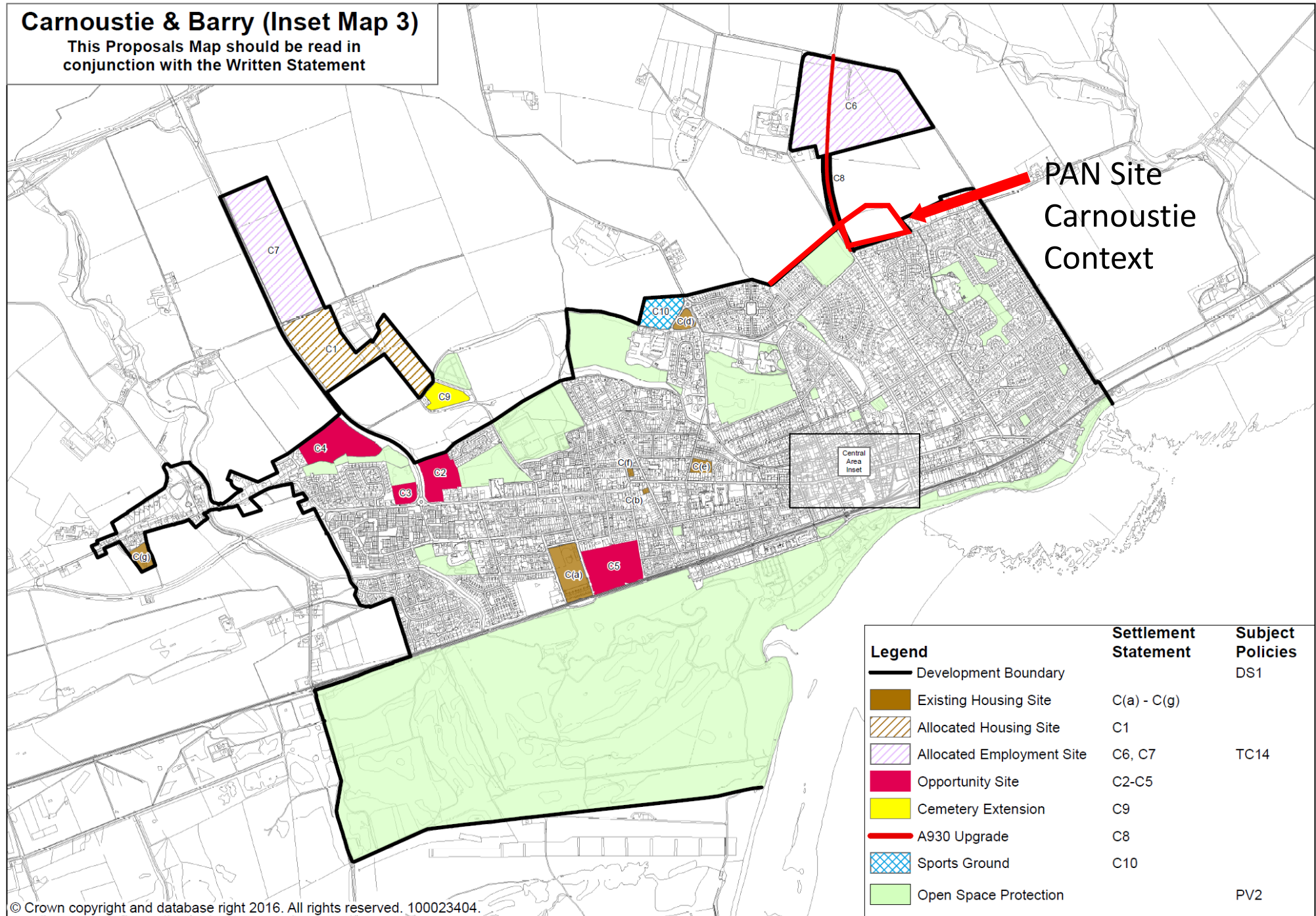
Proposal of application notice

Residential development with associated infrastructure, access, landscaping, drainage, SUDS and open space

Land West of Janefield Cottage, Panbride Road, Carnoustie

### Carnoustie & Barry (Inset Map 3)

This Proposals Map should be read in conjunction with the Written Statement



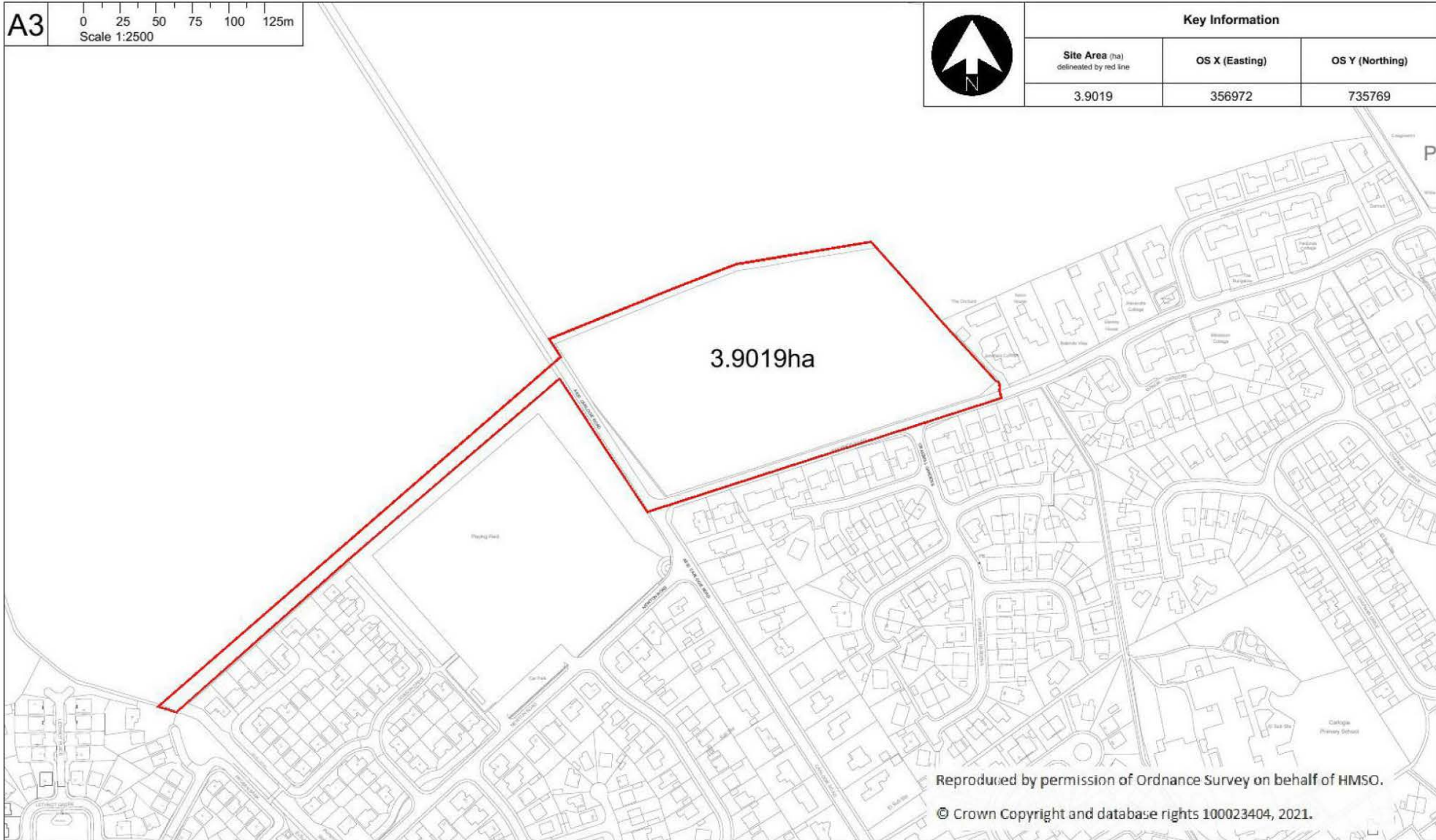
A3

0 25 50 75 100 125m  
Scale 1:2500



Key Information

Site Area (ha) delineated by red line	OS X (Easting)	OS Y (Northing)
3.9019	356972	735769



Reproduced by permission of Ordnance Survey on behalf of HMSO.

© Crown Copyright and database rights 100023404, 2021.



KIRKWOOD BUSINESS PARK, SAUCHEN, INVERURIE, ABERDEENSHIRE, AB51 7LE  
T 01330 833595 F 01330 833625  
info@kirkwood-homes.com www.kirkwoodhomes.co.uk

PROJECT  
Panbride Road, Carnoustie  
CONTENT  
PoAN Plan

COPYRIGHT  
© Copyright Kirkwood Homes Ltd. This drawing and its contents may not be copied or reproduced in any way without express consent of Kirkwood Homes Ltd. No liability will be accepted for amendments made by others.

REV	DESCRIPTION	DATE	BY
-	-	-	-

DATE	SCALE	DRAWN	CHECKED	STATUS
21.01.2021	1:2500	CM		Planning

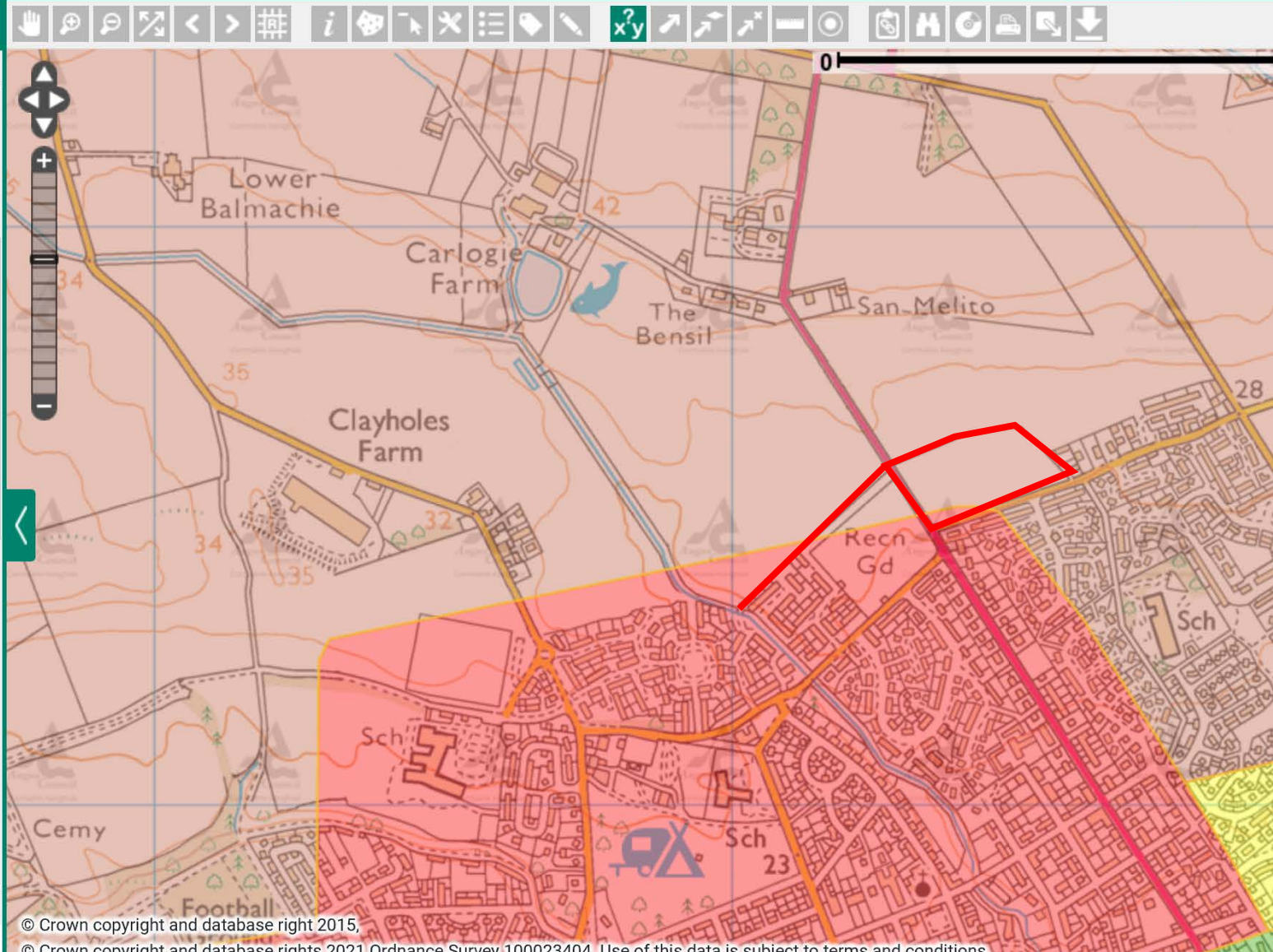
  

PROJECT NO	SET	REFERENCE	PLOT NO	SHEET NO	REV
1415	P	000	XX	001	-

## Mapping Menu

### Land Capability for Agriculture

- Class 1 - Land capable of producing a very wide range of crops
- Class 2 - Land capable of producing a wide range of crops
- Class 3.1 - Land capable of producing a moderate range of crops, capable of producing consistently high yields of a narrow range of crops (cereals/grass) and moderate yields of a wider range
- Class 3.2 - Land capable of producing a moderate range of crops, capable of average production but high yields of grass, barley, oats often, Other crops limited to potato and forage
- Class 4.1 - Land capable of producing a narrow range of crops, suited to crop rotations which are primarily based on long ley grassland include forage crops and cereals for stock feed
- Class 4.2 - Land capable of producing a narrow range of crops, land primarily grassland with some limited potential for other crops
- Class 5.1 - Land suited only to improved grassland and rough grazing, land well suited to reclamation and to use as improved grassland
- Class 5.2 - Land suited only to improved grassland and rough grazing, land moderately suited to reclamation and to use as improved grassland
- Class 5.3 - Land suited only to improved grassland and rough grazing although deterioration can be rapid due to a range of factors
- Class 6.1 - Land capable only of use as rough grazing, High grazing value
- Class 6.2 - Land capable only of use as rough grazing, Moderate grazing value
- Class 6.3 - Land capable only of use as rough grazing, Low grazing value
- Class 7 - Land of very limited agricultural value
- Built up areas
- Lochs and Inland Water
- Uncoded



Scale = 1 : 8929

