



J.W. Souttar
ARCHITECTURAL SERVICES
& BUILDING CONSTRUCTION

3a Clerk Street
Brechin, Angus
DD9 6AF

Telephone
Office: 01356 623435
Mobile: 07802 742226
Fax: 01356 625182

Email: aaron@jwsouttar.com
Website: www.jwsouttar.com

TITLE
Proposed Dwelling House
at Site at
Elm Cottage
Taraside

CLIENT
J.W. Souttar

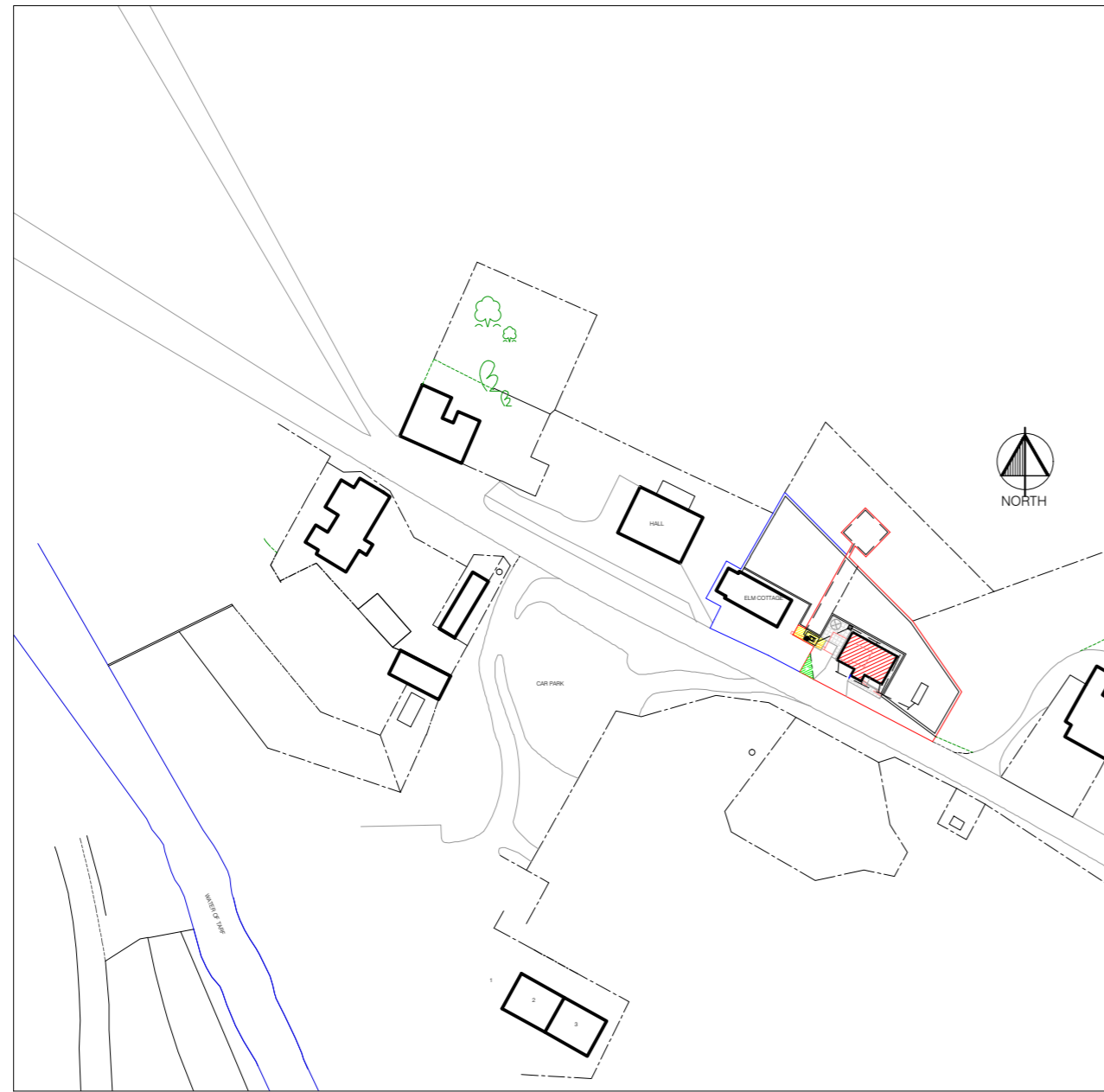
DESCRIPTION
Site and Location Plans

DRAWING TYPE
Working Drawing 2APP

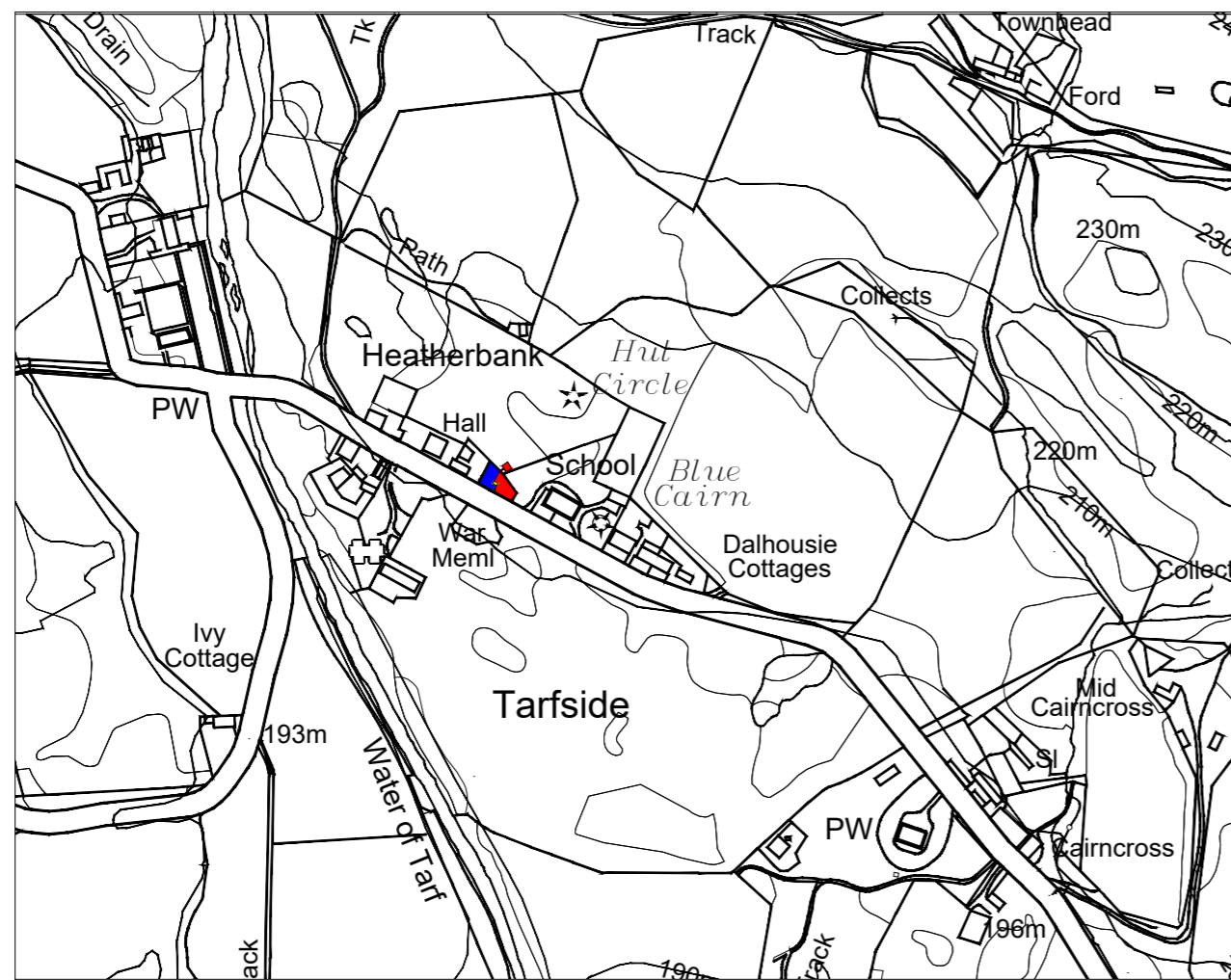
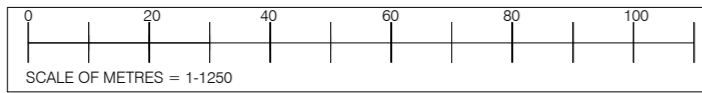
DWG. No. WD2A PP/2154/20 SCALE

DATE March 2021 REVISION

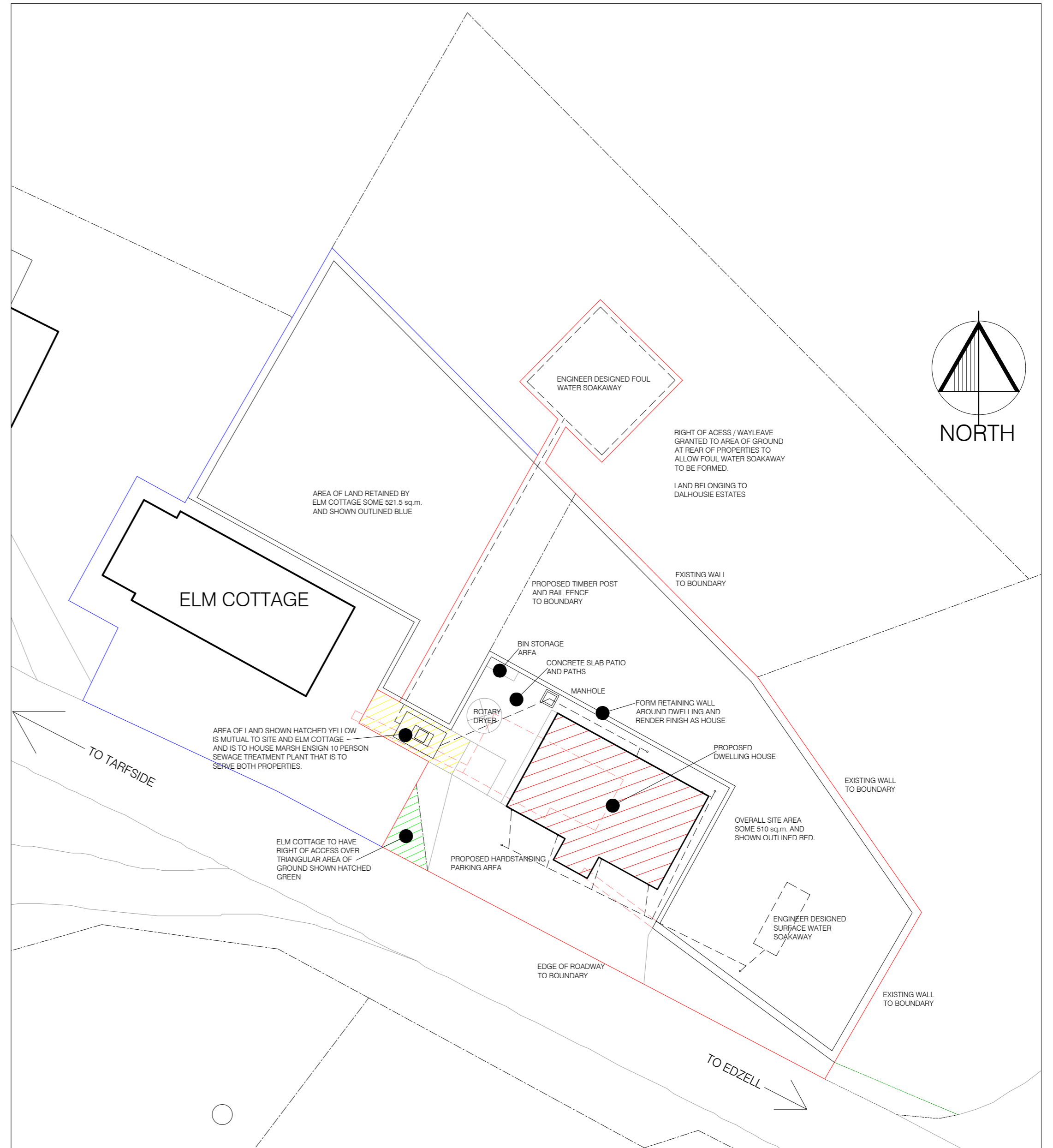
REV.	DATE	ACTION



LOCATION PLAN 1:1250



LOCATION PLAN N.T.S.



SITE PLAN 1:200

