

Item 13

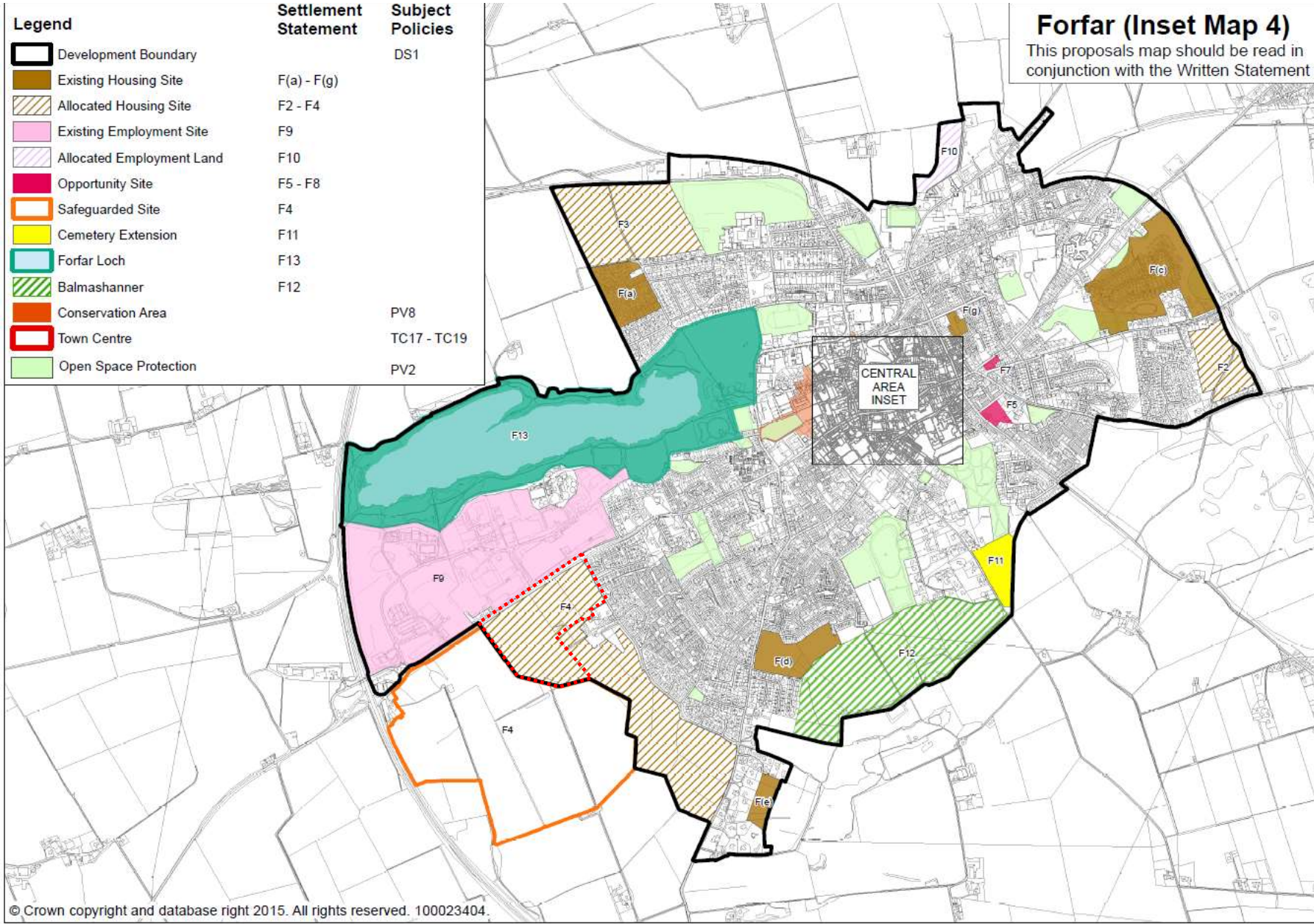
Proposal of application notice: 22/00295/PAN

Residential development, open space and associated infrastructure on land at Glamis Road and Westfield Loan, Forfar

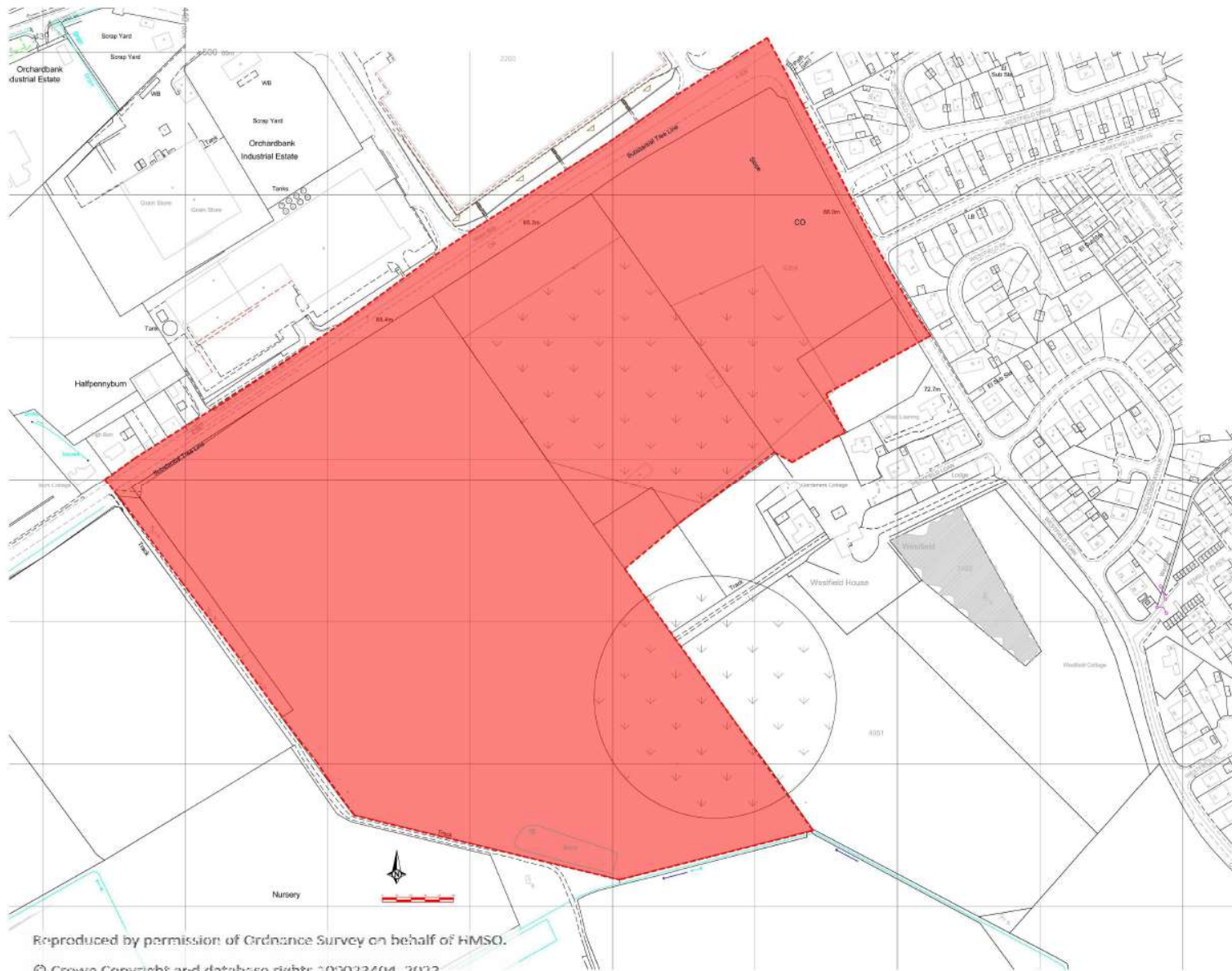
- Legend**
-  Development Boundary
 -  Existing Housing Site
 -  Allocated Housing Site
 -  Existing Employment Site
 -  Allocated Employment Land
 -  Opportunity Site
 -  Safeguarded Site
 -  Cemetery Extension
 -  Forfar Loch
 -  Balmashanner
 -  Conservation Area
 -  Town Centre
 -  Open Space Protection

Settlement Statement	Subject Policies
	DS1
F(a) - F(g)	
F2 - F4	
F9	
F10	
F5 - F8	
F4	
F11	
F13	
F12	
	PV8
	TC17 - TC19
	PV2

Forfar (Inset Map 4)
 This proposals map should be read in conjunction with the Written Statement



Members invited to identify any issues in addition to those listed at 4.5



Boundary generated in line with 1995		A		Apr 2022	
Boundary generated in line with 2010		F		Sept 2019	
Rev	Date	By	Issue		
		JFC			
Project: RESIDENTIAL DEVELOPMENT AT GLAMIS ROAD, FDFAR					
Client: MUIR HOMES LTD					
Stage: PLANNING					
Drawing: LOCATION PLAN					
Number:	17.029.P.001	Revision:	B		
Scale:	1:1250	Sheet Size:	A1		
Date:	20.07.17	By:	JF		

Reproduced by permission of Ordnance Survey on behalf of HMSO.
 © Crown Copyright and database rights 200023404, 2022.