

Charity No. SC 051623



Place Based Investment Fund Applicants 2022/23



Arbroath Community Astroturf Project, 3D pitch



Skilz Academy successfully took over the ownership of the Astroturf pitch situated at Arbroath Sports Centre and High School as a Community Asset Transfer in November 2021.

The current pitch is overdue for an upgrade, it is prone to flooding and has been deemed unsafe for use. With a 99 year lease being signed, Skilz Academy have a robust business plan in place which covers 4 phases of the overall project.

Phase 1 - Removal and replacement of the existing surface and surrounding fence with a 3G all-weather pitch.

Phase 2 - Replacement of existing floodlights

Phase 3 - Install Portakabin toilets and changing facilities or:

Phase 4 - Build a community building adjacent to the pitch for the use of all groups. This building will house, toilets, changing rooms, meeting room/classroom and office space.

Project Impact – The proposed impacts of the project are extensive and range from sporting outcomes, including performance, progression and participation for all in the community; physical and mental wellbeing; disability sports; supporting those from disadvantaged backgrounds; educational attainment and addressing anti-social behaviour and coaching and volunteering opportunities.

**This project matches the PBIP criteria element:
Place/Regeneration/Area of greatest need**

This project will support inequality, community wealth and economic vitality. This project has been driven by partnership working and evidenced plans.

This project meets the following objectives of the fund:

- To ensure that all place-based investments are shaped by the needs and aspirations of local communities
- To accelerate our ambitions for net zero, wellbeing and inclusive economic development, tackling inequality and disadvantage, community involvement and ownership.

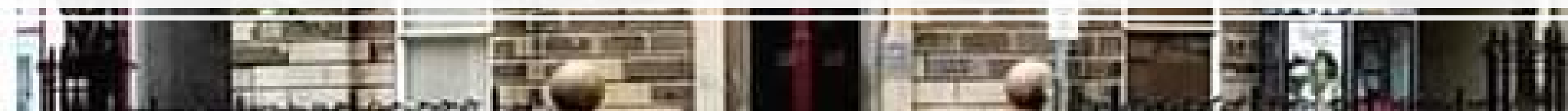
Once the pitch is installed, this facility will be available primarily for football and rugby. Through Community engagement, a number of other sports have expressed interest in the space including Parkour, Ultimate Frisbee, Netball, Rugby, Handball, American Football, Walking Sports, Disability Sports and Exercise Classes. Extensive community engagement has been carried out and the results can be seen in the groups business plan.



Skilz Academy are a strong community organisation that deliver many community initiatives and have a close partnership working with many local partners.



Arbroath Court House



The Project

The former Sheriff Courthouse complex has always been regarded as important to the town, and momentum grew to save the buildings when the closure of the Courthouse occurred in 2014. The Arbroath Courthouse Community Trust (ACCT) was established and through community engagement and the community asset transfer process took over ownership from Scottish Court Services in late December 2020. The building had a major refurbishment while in ownership of the court and is in good condition with rooms currently being let. Major repairs are needed to the roof to make the building water and wind tight and funding has been secured from HES to do this. The Scottish Government welcome this project to apply early 2023 to the Regeneration Capital Grant Fund, when complete both buildings will be fully in use as a thriving community space.



Add in title of mosaic – year laid

Support is being delivered by Business Gateway and the Huntly Development Trust, discussions are underway with businesses in the town. Discussions are ongoing with Dundee and Angus College with a view to incorporating a satellite training facility into the building. Discussions are also underway with the Social Supermarket which are interested in one of the shop front spaces on the ground floor. Community Engagement has been completed and is ongoing. Partnership projects have been developed with Hospitalfield and the building is being used as art studio's and for art classes. Links have been made with the Tay Cities Deal. A strong business plan has been developed and is currently being updated and the group are preparing their financial package with a view to applying to the 2023 Government Regeneration Capital Grant Fund.



Original Cell Gate

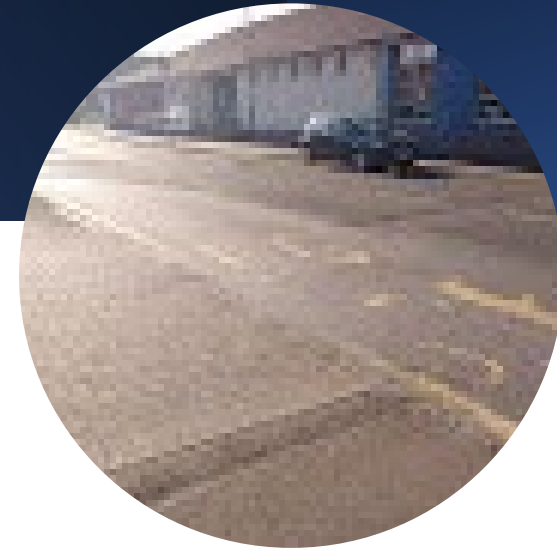
What
about a
quote in
here?
From
SG? or
HES?

ACCT's vision is to secure a sustainable future for the redundant buildings meeting the unique needs of the historic town. Protecting their listed status they will be repaired and adapted, improving and enhancing the unique character and civic presence they inherently have. ACCT see this operation as an essay of where the past meets the future, successful places are distinctive and memorable.

This Project will:

- Provide job Opportunities
- Aid participation and increase social inclusion
- Provide inter-generational opportunities
- creating a sense of pride and identity within the community
- Preserve and share the history of Arbroath
- Increase footfall to the town centre
- Increase the Economic Growth of the area
- Contribute to Scotland's National Strategy for Economic Transformation and the New Future for Scotland's Town centre
- Support local construction
- Bring significant investment into Arbroath
- Partnering with Voluntary Action Angus, Skills Development Scotland, and Visit Scotland volunteering, education, tourism and employability aspects of the project
- Create outcomes of a better place to live and work, provide good opportunities for voluntary placement, opportunities to learn and gain skills, improved wellbeing, access to information and advice

Brechin Community Football Trust: The JARS project



- Brechin Community Football Trust have ambitious plans to renovate a former nightclub and snooker hall into a community health and well-being hub along with a café, social supermarket, community launderette and meeting place.



Sustainability: With a café, social supermarket, community launderette all providing independent income to the project along with meeting spaces that can be rented out by individuals or groups

Project Outcome:

- The Jars Project is where people, location and resource combine to create a sense of identity and purpose, at the heart of addressing the needs and realising the full potential of the community
- The work of the community hub along with it's partners will drive and support change across a broad spectrum of outcomes by supporting good mental health and well-being; provide accessible and easy signposting, offer social
- Tackle inclusion and reduce isolation, help to reduce poverty and improve the local area.

The facility will have space for the community to use and for service and partners to deliver vital service provisions to the community of Brechin.

Monifieth Community Centre



This new purpose-built centre has been in planning for 12 years and is now at the final preparation stages. The building will provide a focal point for social interaction and service provision in the town. There is currently no community facility other than a converted portacabin. Extensive public consultation has indicated the priority for this facility. The centre will add vibrancy to the town encouraging visitors and residents to investigate and participate in new activities and take up services.



The Key Priorities of the project are:

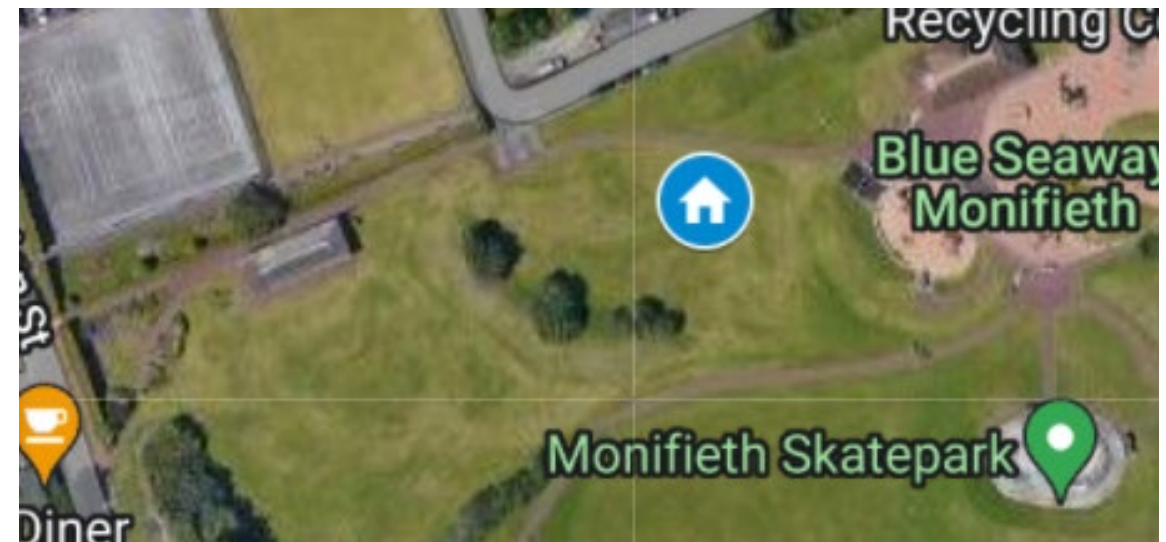
- 1 The community will have improved access to vital facilities, social support, leisure and recreational facilities. It will become more sustainable, stronger and resilient as a result of developing and operating this community managed asset in social, economic and environmental terms.
- 2 Adults and children will increase their potential through opportunities for learning, volunteering and employment.
- 3 Residents, including disadvantaged groups, the elderly and children will have access to improved physical and mental health and wellbeing, enhanced life opportunities and reduction in social isolation; all contributing to a reduction in inequality and disadvantage across the community.

Sited next to the Blue Seaway playpark the centre will offer a cafe with views over the beachfront and the firth of Tay. The centre will provide vital facilities, social support, leisure and recreational activities. There will also be a toddlers' soft play area within the cafe. Baby changing and changing places toilet will also be included.

This project will build a stronger community, although not in the heart of the town centre, it will keep residents local and will contribute to Net Zero through the efficiency of the build and through the reduction in car travel with residents currently having to access services elsewhere.

There will be welfare and health support sessions with health advice for all ages. A Fitness Suite, spaces for groups and activities, and a large hall for sports and community events as well as the flexible café space, with outdoor seating.

The build is ready to start with Planning and Building Warrant already in place. However, due to recent significant cost increases in materials and construction a value engineering exercise has meant that there are changes to the original building. The preferred contractor has been selected and working with the professional team, are confident that the build could be achieved in under a year. Costings and design are at an advanced stage and all agencies are confident that the new improved building can be delivered in the timeframe. The project is at an advanced stage.





Caledonian Railway: Brechin Station Canopy Project

The Caledonian Railway is an entirely volunteer run registered charity in Scotland, with funds being reinvested into the restoration and preservation of the railway. The Brechin Railway Preservation Society was formed in 1979 with the operating arm, Caledonian Railway Brechin Limited, being incorporated on the 16 December 1982. Caledonian Railway Brechin Limited has won several awards and built up a reputation as one of the most visited tourist attractions in Angus.

Brechin Station was built in 1848 as part of the Aberdeen Railway to serve Brechin. Prior to the full closure of the railway by British Rail in 1981, the station concourse canopy was removed. The railway recently completed the first phase of reinstatement of this canopy. This project was completed on time and on-budget, with support from the local community, the National Lottery and railway funds around place-based principles.

This project will reinstate the remainder of the original canopy. It will not only protect an incredibly valuable local heritage asset for future generations, but also provide increased inclusion of local businesses and charities, and improved accessibility for the local community and excluded minorities. It will provide further essential services within the centre of Brechin (20-minute neighbourhood).



The railway has contributed more than £20MM to the local tourist economy in the last 10 years with exciting plans to significantly revitalise the local area-socially and economically. This will create an appealing central location that will encourage increased footfall in Brechin and help to reverse town centre decay.

This project is part of more ambitious plans for the Caledonian Railway. From installing the new Canopy the following outcomes are expected:

- Increase in direct footfall during standard operating days
- Discussion with town centre businesses to increase weekend opening
- Increase in passenger numbers at major events as more people can congregate under the canopy regardless of the weather
- Increased events
- Increased tourism opportunities for Brechin and the surrounding areas
- Safeguarding of jobs, increased job opportunities, opportunities for apprenticeships
- Links to schools for history and educational trips

The Caledonian Railway is a volunteer-run registered charity. Contributing to Community Wealth Building, the preserved railway was established in 1979 and now operates profitably with the majority of revenue generation from railway run events. It has been operating for more than 40 years and during this time has successfully delivered a very large number of sustainable capital and service-based projects industries.





Strathmore Cricket Club :Community Access initiative

The Project will make the facilities at Lochside Park fully accessible, by reconfiguring the two pedestrian entrance areas to allow full wheelchair access and adding a fully accessible toilet to the existing provision. The physical works will install ramps to door entrance level and create a raised area that facilitates access to both buildings and allows ease of movement between them. They will also provide a ramp from street level to the grass playing area. This will make it possible for people of all ages and abilities to benefit from activities at the ground. It will also improve the outward appearance of the park on to Graham Crescent.

This work is the latest stage in the development of Lochside Park for community use. The group have already secured in excess of £120,000 to establish the Meeting Centre and other wellbeing initiatives. The completion of access work will make the Meeting centre and other initiatives open to more people and increase the potential for transforming more lives of Forfar residents.



Physical access to facilities at Lochside Park is currently a barrier to participation in the current range of activities and to the development of new and inclusive sporting, social and recreational programmes hosted at the facility. Improving the physical access will remove this barrier and contribute to the successful achievement of several outcomes:

- People living with dementia will stay well and live in the community for longer
- Family carers (of those living with dementia) will enjoy a better quality of life
- Lochside Connections Meeting Centre will be more sustainable, ensuring that people living with dementia in Forfar have local access to an improved dementia (care) pathway.
- It will also provide sustainable employment for a minimum of four people
- There will be savings to health and social care budgets, resulting from people living with dementia staying healthier for longer
- People living with disabilities (including long term medical conditions) will have improved access to opportunities, enjoying better health and wellbeing
- The activities taking place at Lochside Park will be more accessible and inclusive
- More members of the local community will benefit from sporting, health and wellbeing activities at Lochside Park (including access to the green space for recreational walking)
- More inclusive volunteering opportunities will be available
- There will be increased community resilience and wellbeing, resulting from the successful delivery of a community run Meeting Centre and related activities





GEMS was created in 2015 as part of the Scottish Men's Sheds Association and was very fortunate to have been allowed to use the Old Ropey in Montrose for only a notional monthly payment. This arrangement will shortly end as the owner is retiring and wishes to sell the building. GEMS is currently seeking funding to allow purchase of the building to secure our future.

A study exploring the benefit to men's health provided by Men's Sheds have shown every £1 spent by Aberdeen Council at Westhill has saved £10 for Social Services

Purchase of the Old Ropey will enable the group to :

- Establish the long-term future of GEMS.
- Develop a community space that the community can use for various activities.
- Allow creation of an eco-friendly building making it more sustainable and low carbon (using LED lighting, solar panels etc.)
- Allow continued support to community projects for local schools, community organisations and businesses in Montrose and surroundings.
- Establish positive links with Montrose Academy and Angus Council with the opportunity of supporting young people not engaging with school to learn new skills and knowledge and provide opportunities for youth achievement awards.

GEMS has become established as one of the leading community groups in Montrose, benefitting both the members and the community for whom they undertake projects.

These include

- British Legion,
- Blooming Montrose,
- Montrose Food Bank,
- Montrose railway station and
- Stracathro Hospital
- Local schools
- Montrose bay community group
- 40+ cycles maintained and repaired through Scottish cycle repair scheme SG



“Gems is a treasured resource” “outstanding voluntary work to the local community” “Your hard work has benefitted many”



This project meets the following objectives of the fund:

- To ensure that all place-based investments are shaped by the needs and aspirations of local communities
- To accelerate our ambitions for net zero, wellbeing and inclusive economic development, tackling inequality and disadvantage, community involvement and ownership.



Hospitalfield Trust: Hospitalfield Future plan phase 2

Hospitalfield, one of Scotland's most important historic country houses, with significant historical connections to Arbroath Abbey

Since 2012 the director and trustees have invested in developing a transformational vision for Hospitalfield, with the aim of establishing a mixed-use visitor destination with the narrative of place and the cultural heritage defining the vision. The capital programme (£11.5m) and corresponding organisational change will be delivered in four phases;

Phase 2 is the focus of this application.



Project Outcome:

Provision of high quality modern overnight accommodation
Supporting the cultural and community focused
programmes:-

- Phase 2 The Studios and Guesthouse, benefitting:-
 - The local and regional community – investing in place and the creative and cultural atmosphere of Angus and the Tay Region – the renewed and far more accessible facilities will be available for our wide-reaching cultural programme including our now well-established community engagement, wellbeing and volunteer programmes.
 - Sustainable approach to building - restoration of the most at risk and listed heritage on the site, new build design meeting BREAM excellence.
 - Contributing to the local and regional economy - creating a new 23 bed 'guest house', providing good quality, well designed overnight accommodation in the region so increasing visitor dwell time.
 - Sustainability of the Trust's business plan

Sustainable Letham

Project Outcomes:

Good quality easily understood information, showing the walks and areas which, the whole community can benefit from.

Encouraging the community to get involved with enjoying active travel, developing a healthy lifestyle and helping to encourage biodiversity. Thus, contributing to Scotland's net zero ambitions





Project need :

Letham has increased in population greatly in recent years and many of the new residents are unaware of the extensive network of green footpaths and the open areas that are available to them in and around Letham. Accurately recording and mapping these community assets will help tremendously in encouraging the use of these areas and help with recruiting new volunteers to continue with the maintenance of them.

- **Sustainable:**

- Through a wider understanding of the benefits of our green spaces that more of the community will offer to be involved with caring for it and join our team of volunteers or contribute in other ways.

- In the longer term we hope to turn the land on Auldbar road and the now disused toilet block into a hub for the maintenance and care of our outside spaces, through providing storage for the paths equipment and the gardening equipment used for looking after the flowerbeds and hanging basket in the square. (supported financially by Letham Feuars' Committee and Letham Gardening Club) and encouraging growing food in a community eatable plants area.



Angus Council Parks Service: Lochside Destination Play Area



Project need:

To ensure that children in Forfar have the same opportunities as in other burghs it is proposed to redesign the Lochside facility to a major new park that will offer a unique and unforgettable play experience, thereby tackling inequality and supporting the right for all to play and grow.

The proposals are to replace the existing park with a custom designed area that will provide a unique play facility that is not currently available in the region. It will incorporate equipment for all age ranges from 0 to 18 years and facilitate inclusive play for disabled and able-bodied children together.



Project benefits

- With the imminent removal of the old Lochside Leisure Centre this project will re-vitalise the area adding a community inspired and much needed facility to Forfar.
- Local children and wider community will be involved in choosing the best facility for all.
- This new park will not only provide a brand-new play environment for the local young people but also attract visitors from all over Angus and the East coast of Scotland to Forfar to try out the new equipment. These
- Increased visitor numbers will undoubtedly result in economic growth in the town and surrounding areas.

