

Item 7

21/00865/FULL | Erection of a Recycling Shed - Part
Retrospective | Ardownie Quarry Ardownie Monifieth

EXISTING TOPOGRAPHY PLAN

Legend

-  Planning Application Boundary
-  Existing Trees
-  Recently Planted Areas
-  Cross Section Locations

Town & Country Planning (Scotland) Act 1987 As Amended
 APPROVED ON BEHALF OF THE ANGLUS COUNCIL
 SUBJECT TO THE CONDITIONS SET FORTH BY
 VIRTUALLY OF PERMISSION

Date: 01 FEB 2012



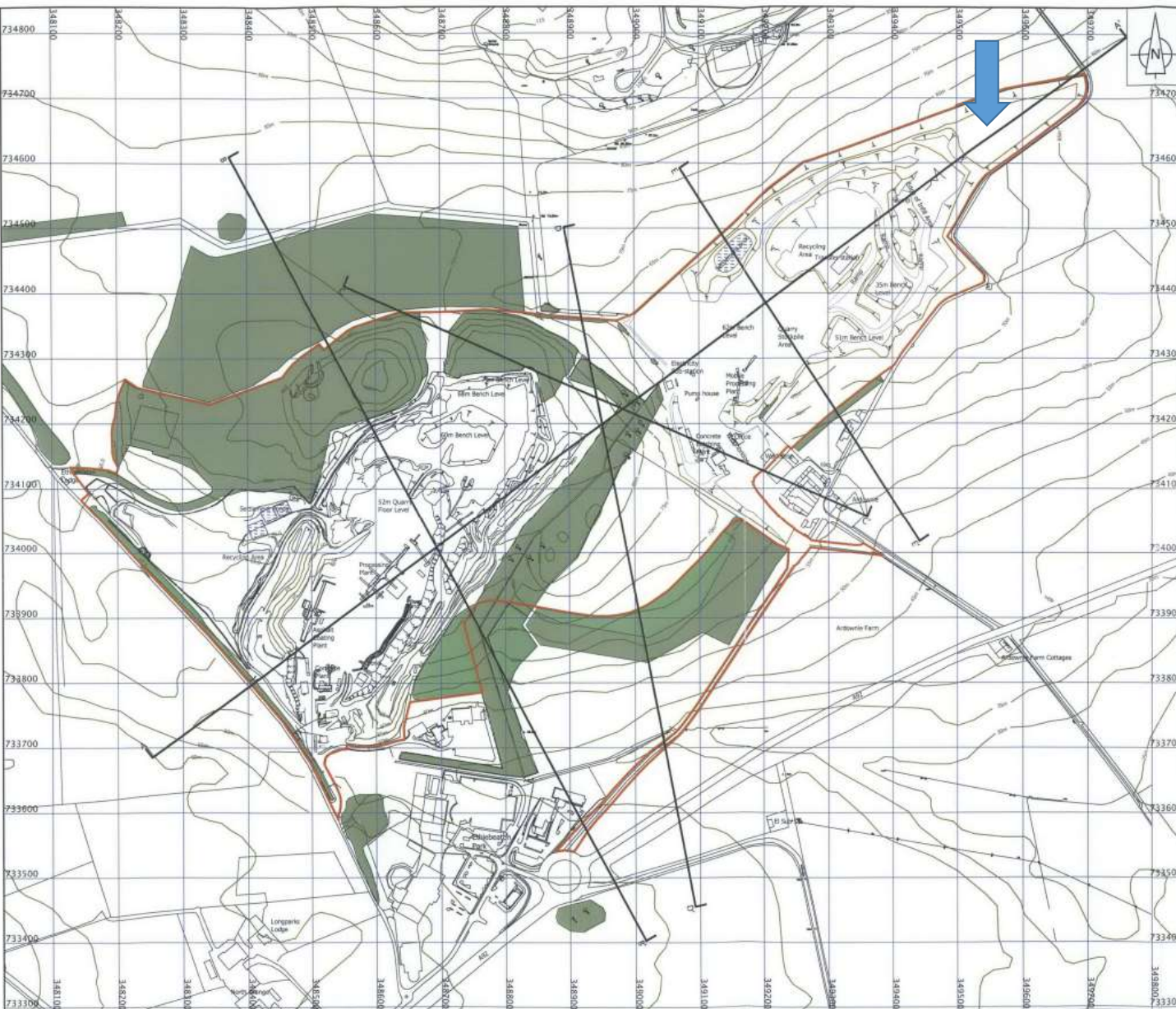
Authorized Officer

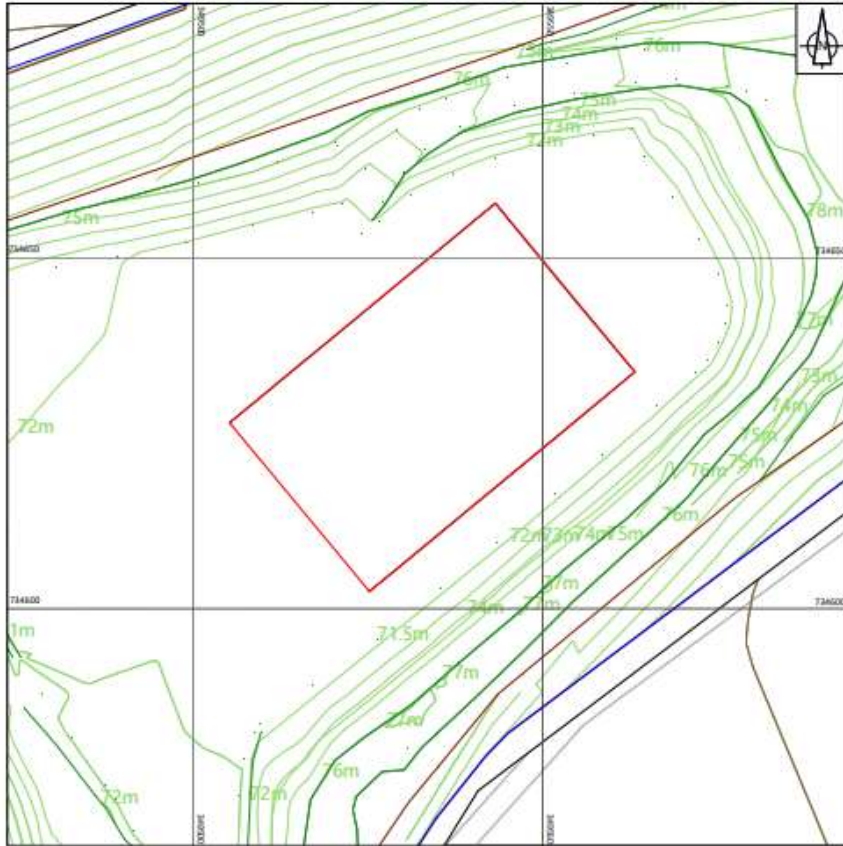
0 100m 200m
 Scale

Planning permission 10/01189/MINM
 allowed for:

- extraction of hard rock
- recycling of aggregates
- batching of concrete

Approved subject to conditions 1/2/2012





Legend

- Planning Application Boundary
- Land in Ownership of Applicant

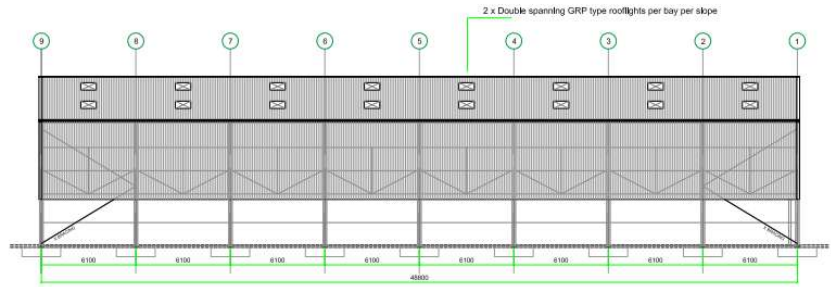


PROPOSED RECYCLING SHED LOCATION PLAN

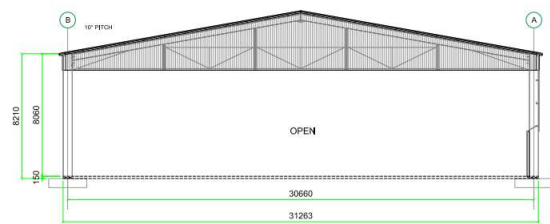
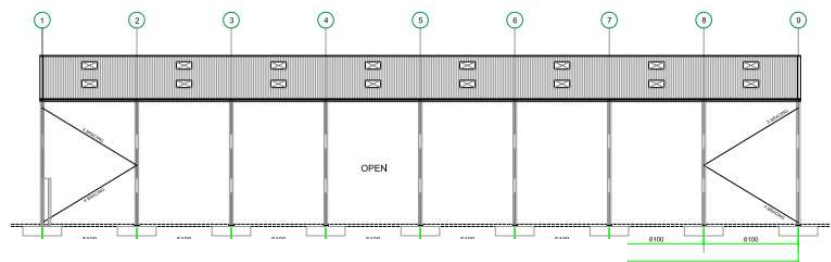
Client: D GEDDES (CONTRACTORS) LTD

Project: ARDOWRIE QUARRY RECYCLING SHED

Title: PROPOSED RECYCLING SHED LOCATION PLAN

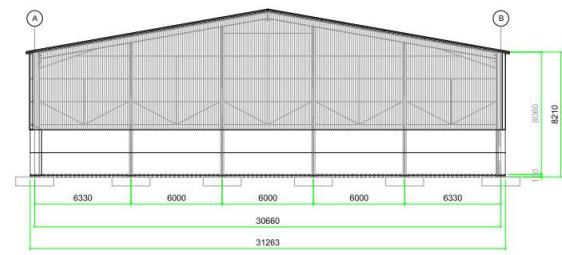


Roof Sheeting: Steadmans AS30100R plastisol coated Galvanised steel sheet lined with anti-condensation fleece
 Side Sheeting: Steadmans AS30100W profile plastisol coated Galvanised steel sheet



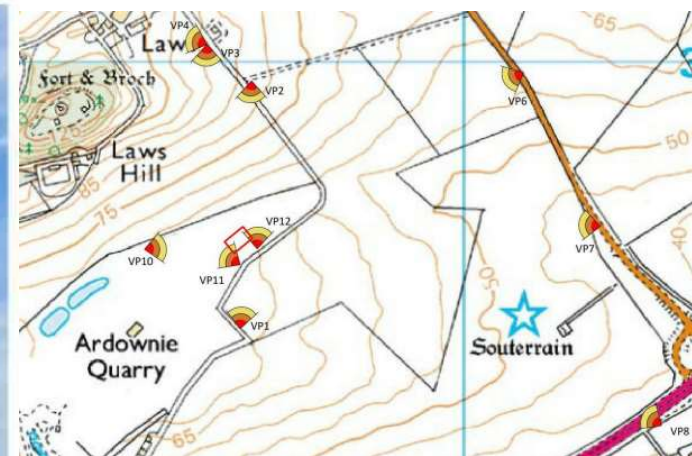
SOUTH WEST ELEVATION (GRID LINE 9)

Roof Sheeting: Steadmans AS30100R plastisol coated Galvanised steel sheet lined with anti-condensation fleece
 Side Sheeting: Steadmans AS30100W profile plastisol coated Galvanised steel sheet



NORTH EAST ELEVATION (GRID LINE 1)

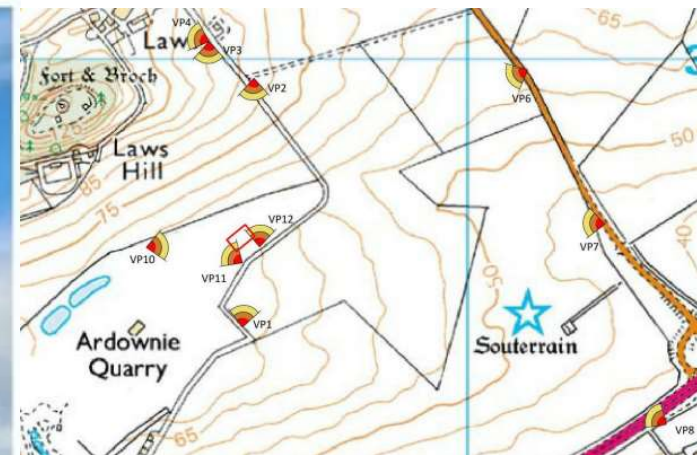




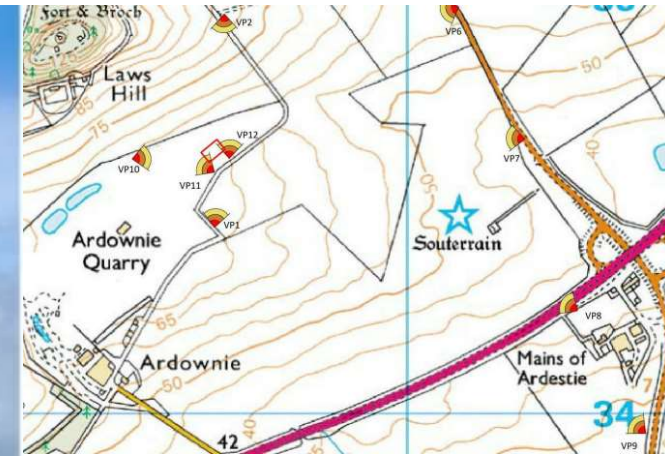
Viewpoint 10 Looking east towards recycle shed from internal haul road



Viewpoint 2 Looking south-south-west towards recycling shed from Ardownie Farm to Lays Farm Road



Viewpoint 6 Looking west towards recycling shed and Laws Farm from B962



Viewpoint 8 Looking north-west towards recycling shed and Laws Farm from bus stop on A92



- Use of site for recycling aggregates established and regulated by 10/01189/MINM
- Impacts associated with noise would not breach existing limits
- Building similar to agricultural buildings in surrounding area
- Building to be removed at end of 30 year quarry lifespan

- 8 representations raising objection, but impacts can be mitigated
- No consultee objections
- Complies with development plan and SPP
- Recommendation – **conditional approval**