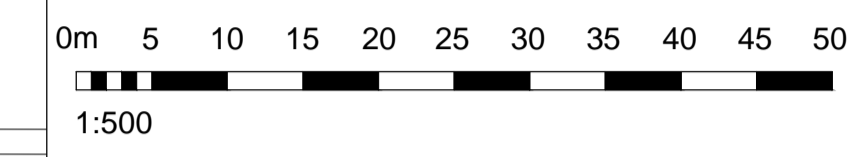
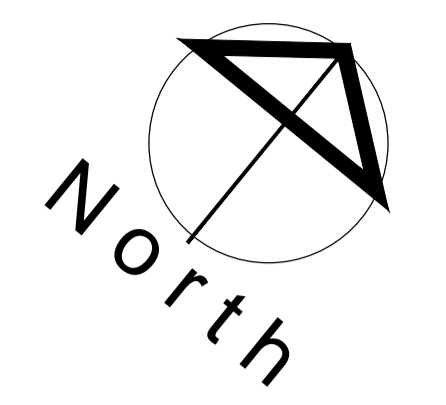


2. All sizes to be checked on site prior to construction.
3. This drawing is the copyright of the author.

Appendix 4



— APPLICATION BOUNDARY
— BOUNDARY AREA - 3.92 Ha (9.68 Acres)
● PEDESTRIAN ROUTES

DEVELOPMENT SCHEDULE

UNIT 1 - RETAIL UNIT

UNIT 1 Building GEA	3,025sq.m. (32,561sq.ft.)
UNIT 1 Building GIA	2,787sq.m. (30,000sq.ft.)
UNIT 1 Garden Centre	929sq.m. (10,000sq.ft.)

UNIT 2, 3 & 4 - RETAIL UNIT

UNIT 2, 3 & 4 Building GEA	2,801sq.m. (30,150sq.ft.)
----------------------------	---------------------------

UNIT 2 - RETAIL UNIT

UNIT 2 Building GIA	1,208sq.m. (13,000sq.ft.)
---------------------	---------------------------

UNIT 3 - RETAIL UNIT

UNIT 3 Building GIA	720sq.m. (7,750sq.ft.)
---------------------	------------------------

UNIT 4 - RETAIL UNIT

UNIT 4 Building GIA	720sq.m. (7,750sq.ft.)
---------------------	------------------------

UNIT 5 - RETAIL UNIT

UNIT 5 Building GEA	1,871sq.m. (20,139sq.ft.)
UNIT 5 Building GIA	1,786sq.m. (19,225sq.ft.)

PARKING AREAS

Standard Parking Spaces	339
Disabled Parking Spaces	31
Parent & Child Parking Spaces	17
Electric Charge Parking Spaces	13
Total Car Parking Spaces	400
Total Motorcycle (PTW) Spaces	15
Total Cycle Hoops (with shelter)	24

UNIT 6 - DRIVE THRU COFFEE SHOP

Unit 6 GEA	199.2sq.m. (2,144sq.ft.)
Unit 6 GIA	167.9sq.m. (1,807sq.ft.)

Total Motorcycle (PTW) Spaces 1
Total Cycle Hoops (with shelter) 2

UNIT 7 - DRIVE TO RESTAURANT

Unit 7 GEA	167sq.m. (1,780sq.ft.)
Unit 7 GIA	144sq.m. (1,550sq.ft.)

Total Motorcycle (PTW) Spaces 1
Total Cycle Hoops (with shelter) 2

TAXI PICK UP LAY BY

Total Waiting Spaces	5
-----------------------------	----------

Note that a CPT (Changing Places Toilet Facilities) will also be provided within the development.

03 10.10.2022 CPT note added to schedule. PR
02 05.10.2022 M/C parking and cycle shelters added. PR
01 23.05.2022 Existing core paths information added. PR
smith design associates
www.smithdesign.co.uk

Chartered Architects
16 Lynedoch Crescent, Glasgow G3 6EQ 0141 353 3501
client T. J. Morris Ltd **home bargains**

project	Proposed Retail Development Dundee Road, ARBROATH	original size	A1
drawing	Block Plan As Proposed	drawn	PR
scale	1:500	checked	-
date	08.03.2022	passed	-
status	PLANNING	revision	-
job no.	G2997	drawing no.	AL(0)004
		revision	03

