

CONTINUED ON DRAWING No. 10042248-ARC-ELS-ZZ-DR-LV-03003



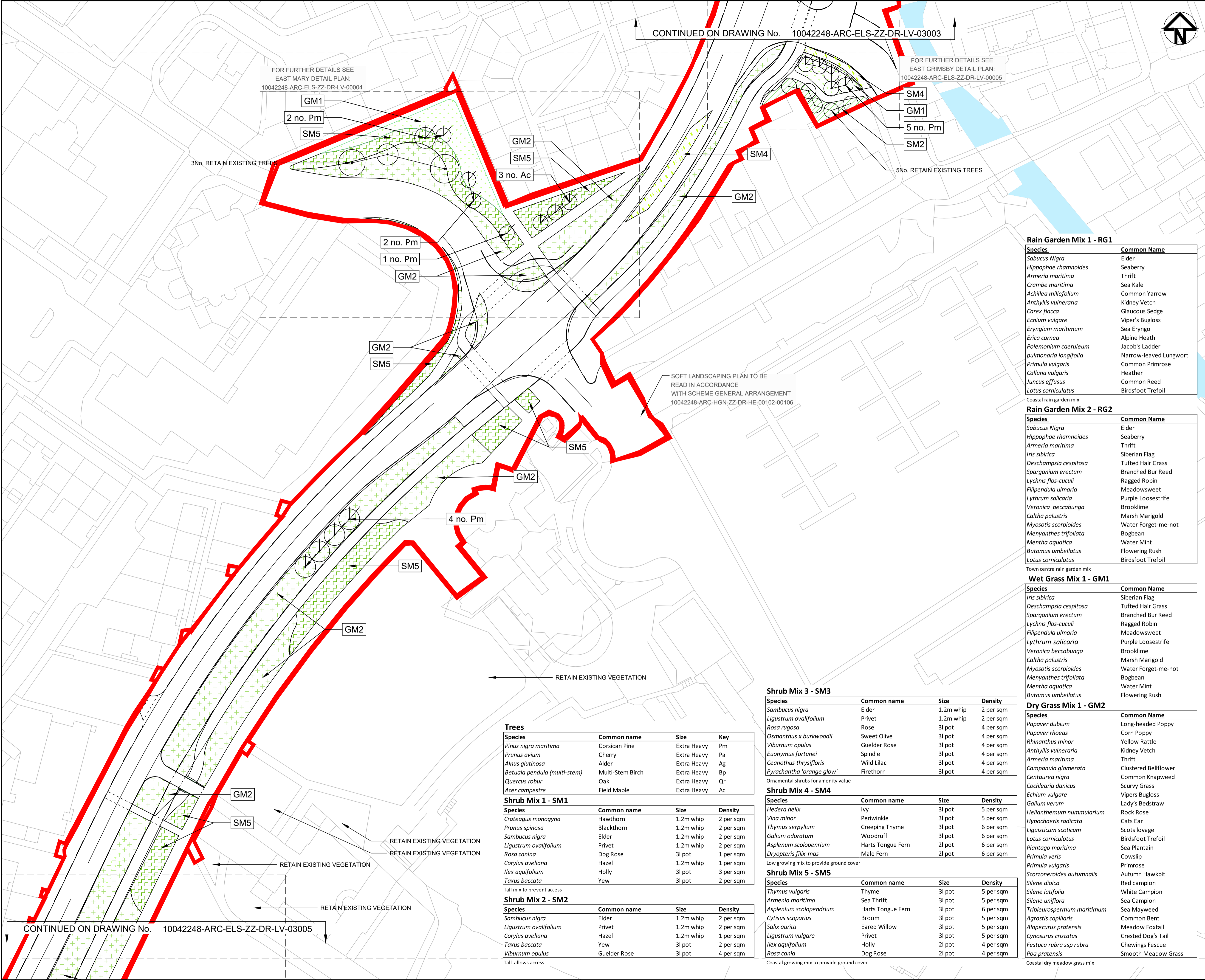
- NOTES:**
- ALL DIMENSIONS ARE IN METERS UNLESS OTHERWISE SPECIFIED.
 - DRAWINGS ARE TO BE PRINTED IN COLOUR.
 - DRAWINGS SHOULD NOT BE USED FOR MEASURING QUANTITIES.

KEY

	Wet Grass Mix
	Dry Grass Mix
	Shrub Mix 1
	Shrub Mix 2
	Shrub Mix 3
	Shrub Mix 4
	Shrub Mix 5
	Retained Mature Tree
	Proposed Semi Mature Trees
	Proposed Multi-Stem Tree

FOR FURTHER DETAILS SEE EAST MARY DETAIL PLAN: 10042248-ARC-ELS-ZZ-DR-LV-00004

FOR FURTHER DETAILS SEE EAST GRIMSBY DETAIL PLAN: 10042248-ARC-ELS-ZZ-DR-LV-00005



Rain Garden Mix 1 - RG1

Species	Common Name
<i>Sabucus nigra</i>	Elder
<i>Hippophae rhamnoides</i>	Seaberry
<i>Armeria maritima</i>	Thrift
<i>Crambe maritima</i>	Sea Kale
<i>Achillea millefolium</i>	Common Yarrow
<i>Anthyllis vulneraria</i>	Kidney Vetch
<i>Carex flacca</i>	Glaucous Sedge
<i>Echium vulgare</i>	Viper's Bugloss
<i>Eryngium maritimum</i>	Sea Eryngo
<i>Erica carnea</i>	Alpine Heath
<i>Polemonium caeruleum</i>	Jacob's Ladder
<i>pulmonaria longifolia</i>	Narrow-leaved Lungwort
<i>Primula vulgaris</i>	Common Primrose
<i>Calluna vulgaris</i>	Heather
<i>Juncus effusus</i>	Common Reed
<i>Lotus corniculatus</i>	Birdsfoot Trefoil

Rain Garden Mix 2 - RG2

Species	Common Name
<i>Sabucus nigra</i>	Elder
<i>Hippophae rhamnoides</i>	Seaberry
<i>Armeria maritima</i>	Thrift
<i>Iris sibirica</i>	Siberian Flag
<i>Deschampsia cespitosa</i>	Tufted Hair Grass
<i>Sparganium erectum</i>	Branched Bur Reed
<i>Lychnis fls-cuculi</i>	Ragged Robin
<i>Filipendula ulmaria</i>	Meadowsweet
<i>Lythrum salicaria</i>	Purple Loosetrife
<i>Veronica beccabunga</i>	Brooklime
<i>Caltha palustris</i>	Marsh Marigold
<i>Myosotis scorpioides</i>	Water Forget-me-not
<i>Menyanthes trifoliata</i>	Bogbean
<i>Mentha aquatica</i>	Water Mint
<i>Butomus umbellatus</i>	Flowering Rush
<i>Lotus corniculatus</i>	Birdsfoot Trefoil

Wet Grass Mix 1 - GM1

Species	Common Name
<i>Iris sibirica</i>	Siberian Flag
<i>Deschampsia cespitosa</i>	Tufted Hair Grass
<i>Sparganium erectum</i>	Branched Bur Reed
<i>Lychnis fls-cuculi</i>	Ragged Robin
<i>Filipendula ulmaria</i>	Meadowsweet
<i>Lythrum salicaria</i>	Purple Loosetrife
<i>Veronica beccabunga</i>	Brooklime
<i>Caltha palustris</i>	Marsh Marigold
<i>Myosotis scorpioides</i>	Water Forget-me-not
<i>Menyanthes trifoliata</i>	Bogbean
<i>Mentha aquatica</i>	Water Mint
<i>Butomus umbellatus</i>	Flowering Rush

Shrub Mix 3 - SM3

Species	Common name	Size	Density
<i>Sambucus nigra</i>	Elder	1.2m whip	2 per sqm
<i>Ligustrum ovalifolium</i>	Privet	1.2m whip	2 per sqm
<i>Rosa rugosa</i>	Rose	3l pot	4 per sqm
<i>Osmanthus x burkwoodii</i>	Sweet Olive	3l pot	4 per sqm
<i>Viburnum opulus</i>	Guelder Rose	3l pot	4 per sqm
<i>Euonymus fortunei</i>	Spindle	3l pot	4 per sqm
<i>Ceanothus thysifloris</i>	Wild Lilac	3l pot	4 per sqm
<i>Pyracantha 'orange glow'</i>	Firethorn	3l pot	4 per sqm

Shrub Mix 4 - SM4

Species	Common name	Size	Density
<i>Hedera helix</i>	Ivy	3l pot	5 per sqm
<i>Vina minor</i>	Periwinkle	3l pot	5 per sqm
<i>Thymus serpyllum</i>	Creeping Thyme	3l pot	6 per sqm
<i>Galium odoratum</i>	Woodruff	3l pot	6 per sqm
<i>Asplenium scolopendrium</i>	Harts Tongue Fern	2l pot	6 per sqm
<i>Dryopteris filix-mas</i>	Male Fern	2l pot	6 per sqm

Shrub Mix 5 - SM5

Species	Common name	Size	Density
<i>Thymus vulgaris</i>	Thyme	3l pot	5 per sqm
<i>Armeria maritima</i>	Sea Thrift	3l pot	5 per sqm
<i>Asplenium scolopendrium</i>	Harts Tongue Fern	3l pot	6 per sqm
<i>Cytisus scoparius</i>	Broom	3l pot	5 per sqm
<i>Salix aurita</i>	Eared Willow	3l pot	5 per sqm
<i>Ligustrum vulgare</i>	Privet	3l pot	5 per sqm
<i>Ilex aquifolium</i>	Holly	2l pot	4 per sqm
<i>Rosa cania</i>	Dog Rose	2l pot	4 per sqm

Trees

Species	Common name	Size	Key
<i>Pinus nigra maritima</i>	Corsican Pine	Extra Heavy	Pm
<i>Prunus avium</i>	Cherry	Extra Heavy	Pa
<i>Alnus glutinosa</i>	Alder	Extra Heavy	Ag
<i>Betula pendula (multi-stem)</i>	Multi-Stem Birch	Extra Heavy	Bp
<i>Quercus robur</i>	Oak	Extra Heavy	Qr
<i>Acer campestre</i>	Field Maple	Extra Heavy	Ac

Shrub Mix 1 - SM1

Species	Common name	Size	Density
<i>Crataegus monogyna</i>	Hawthorn	1.2m whip	2 per sqm
<i>Prunus spinosa</i>	Blackthorn	1.2m whip	2 per sqm
<i>Sambucus nigra</i>	Elder	1.2m whip	2 per sqm
<i>Ligustrum ovalifolium</i>	Privet	1.2m whip	2 per sqm
<i>Rosa canina</i>	Dog Rose	3l pot	1 per sqm
<i>Corylus avellana</i>	Hazel	1.2m whip	1 per sqm
<i>Ilex aquifolium</i>	Holly	3l pot	3 per sqm
<i>Taxus baccata</i>	Yew	3l pot	2 per sqm

Shrub Mix 2 - SM2

Species	Common name	Size	Density
<i>Sambucus nigra</i>	Elder	1.2m whip	2 per sqm
<i>Ligustrum ovalifolium</i>	Privet	1.2m whip	2 per sqm
<i>Corylus avellana</i>	Hazel	1.2m whip	1 per sqm
<i>Taxus baccata</i>	Yew	3l pot	2 per sqm
<i>Viburnum opulus</i>	Guelder Rose	3l pot	4 per sqm

Rev	Date	Description	Prod.	Chk.	Rev.	App.
P01	04/11/22	amended		JR	JR	MS
P02	14/02/23	For Issue		RH	JR	JR
P03	29/09/23	FOR TENDER		RM	JR	MS

Angus Council

Project: **Arbroath A Place for Everyone**

Site: A92 Westport, Arbroath Angus

Client: Angus Council
Angus House, Sylvie Way,
Orchardbank Business Park,
Forfar, DD8 1AN
www.angus.gov.uk

ARCADIS

Registered office: 80 Fenchurch Street, London EC3M 4BY

Coordinating office: 16th Floor, 103 Colmore Row, Birmingham B3 3AG
Tel: 44 (0)121 516 1818

www.arcadis.com © Copyright reserved

Arbroath - A Place for Everyone

Detailed Design
Soft Landscape Plan
Sheet 4 of 6

Designed	Signed	Date
R. Hebble	Digitally Signed	29/09/23
Produced	Signed	Date
R. McComish	Digitally Signed	29/09/23
Checked	Signed	Date
J. Ramsay	Digitally Signed	29/09/23
Reviewed	Signed	Date
J. Ramsay	Digitally Signed	29/09/23
Approved	Signed	Date
M. Scott	Digitally Signed	29/09/23

Original Size: N/A Grid: OS Datum: AOD
Suitability Code: SS Scale: 1:500 Project Number: 10042248
Suitability Description:

Suitable for Review and Acceptance

Drawing Number: **10042248 - ARC - ELS ZZ - DR - LV - 03004** P03